

## How to output bleed tabs

The two examples below output bleed tabs from a page `region`. However, bleed tabs can be output from the page header or footer as well.

Requirements for bleed tabs vary. The two examples here explore some of the possibilities.

In the first example, each section is titled with a FOSI-generated ascending uppercase letter. This letter appears white on black in a bleed tab at the right edge of each recto page in the section. When the letter is incremented for the next section, the bleed tab moves one position down the page. There is vertical space for 16 letters. The bleed tab of the seventeenth letter, “Q,” is output at the top of the page in the same position as the first letter, “A.”

The bleed tabs are output from a `region` that extends off the right side of the page, as **Figure 348 Preview Extended Pages display** below reveals. The `usetext` in the `region` outputs an appended string with all the section letters encountered so far. However, only the last letter appears in print/PDF output because the formatting pseudo-element that wraps each letter has two `e-i-c` in the FOSI with different occurrence specifications. `Context="notlast"` outputs a box with a white interior so the white-on-white letter does not appear. `context="last"` outputs a box with a black interior so the white-on-black letter does appear. Note the context pseudo-element `region.ctx` that provides parental context for the occurrence settings on the `sectionct.fmt` formatting pseudo-element.

### TIP

Find out the size of the paper on which the document is to be printed and the final trim size.

### FOSI TIP

While working with a `region`, assign a background color (`backclr`) to it so the region is visible. Use different colors for different regions on the same page so you can distinguish them. Before the FOSI is deployed, be sure to delete the color characteristics.

Figure 347 Bleed tabs for alphabetical sections

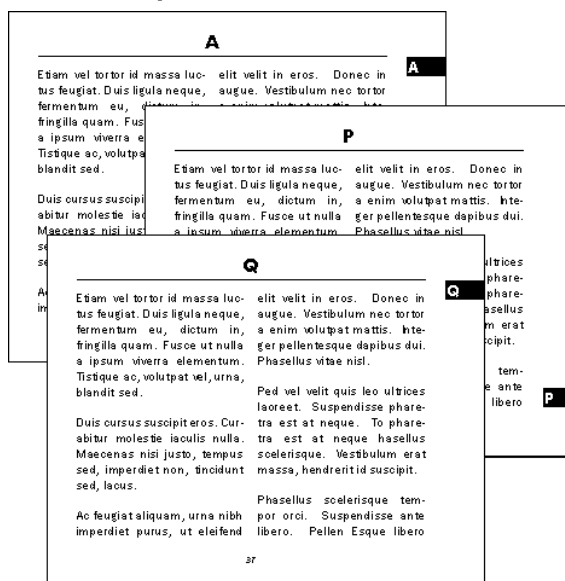
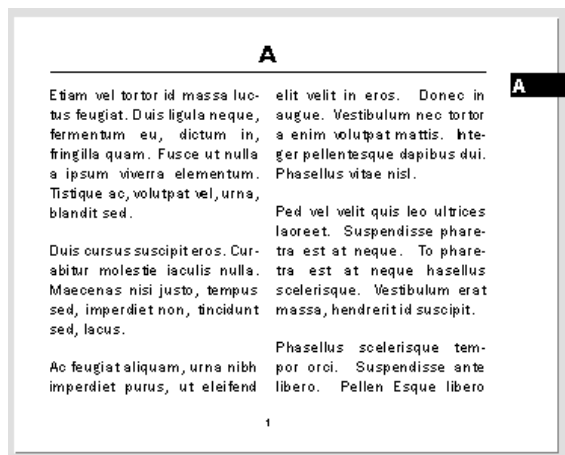


Figure 348 Preview Extended Pages display

**FOSI fragment**

```
<counter initial="0" style="alphauc" enumid="sectionct">
...
<stringdecl textid="sectionct.txt" literal="">
<stringdecl textid="sectionct.app" literal="">

<pageset id="body.page">
```

```

<rectopg width="5in" nomdepth="4in">
...
<region xoff="27.5pi" yoff="2pi" width="3pi" height="20pi" layer="-1">
<usetext source="<region.ctx>,3pt,sectionct.app[B0],</region.ctx">
<subchars>
<font inherit="1" famname="Aharoni" size="14pt">
<highlt inherit="1" fontclr="#FFFFFF">
...
<e-i-c gi="section">
<charlist inherit="1" charsubsetref="division">
...
<enumerat increm="1" enumid="sectionct">
<savetext textid="sectionct.txt" conrule="sectionct">
...
<e-i-c gi="title" context="section">
<charlist inherit="1" charsubsetref="title center allcaps">
<usetext source="sectionct.txt" placemnt="before">
...
<att>
<specval attname="sectionct" attloc="#FOSI" attval="17">
<charsubset>
<savetext textid="sectionct.app" append="0"
conrule="<sectionct.fmt>,sectionct.txt,</sectionct.fmt>">
...
<att>
<specval attname="sectionct" attloc="#FOSI" attval="#NE#17">
<charsubset>
<savetext textid="sectionct.app" append="1"
conrule="<sectionct.fmt>,sectionct.txt,</sectionct.fmt>">
...
<e-i-c gi="region.ctx">
<charlistg inherit="1"></charlist>
</e-i-c>
<e-i-c gi="sectionct.fmt" context="region.ctx" occur="last">
<charlist inherit="1" charsubsetref="block">
<boxing toffset="12pt" boffset="3pt" loffset="0pt" roffset="0pt"
trel="first"
brel="last" siderel="text" thick="1pt" ttype="tsingle" btype="bsingle"
ltype="lsingle" rtype="rsingle" inclr="#000000" outclr="#000000">
...
<e-i-c gi="sectionct.fmt" context="region.ctx" occur="notlast">
<charlist inherit="1" charsubsetref="block">
<boxing toffset="12pt" boffset="3pt" loffset="0pt" roffset="0pt"
trel="first"
brel="last" siderel="text" thick="1pt" ttype="tsingle" btype="bsingle"
ltype="lsingle" rtype="rsingle" inclr="#FFFFFF" outclr="#FFFFFF">
...

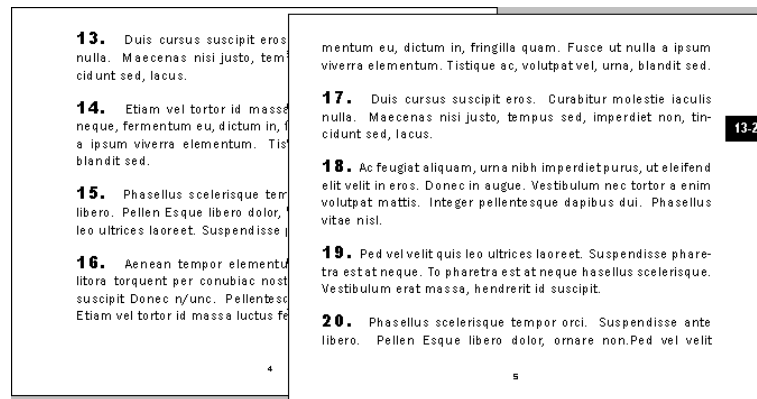
```

In the second example, every paragraph has a FOSI-generated ascending Arabic number. The bleed tab on the right edge of each recto page contains

a range of numbers indicating the numbered paragraphs that appear on the double–page spread (verso and recto pages).

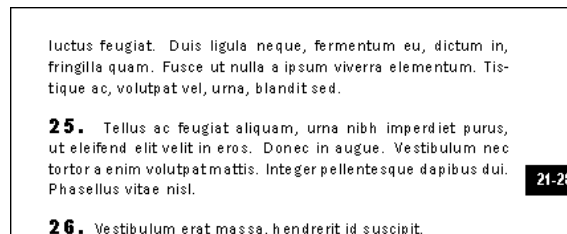
**NOTE:** This examples requires the use of strings modifiers, which are discussed on page 129.

**Figure 349** Bleed tabs with number ranges



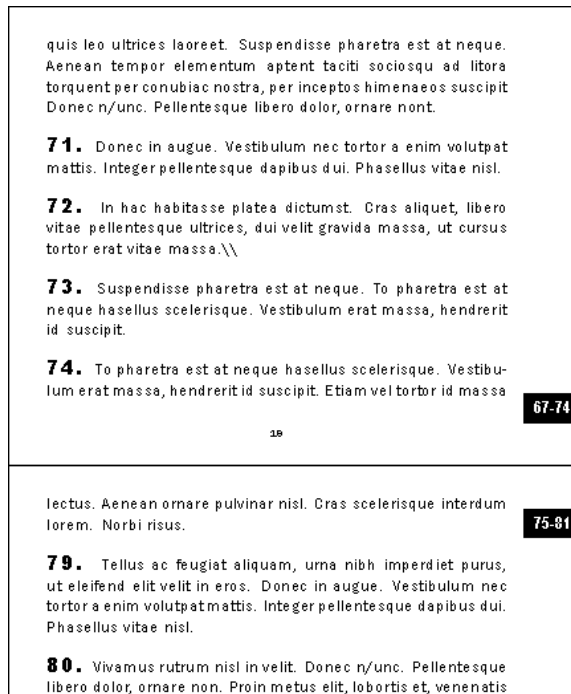
On the next recto page, the bleed tab moves one position down the page.

**Figure 350** Bleed tabs move down the page

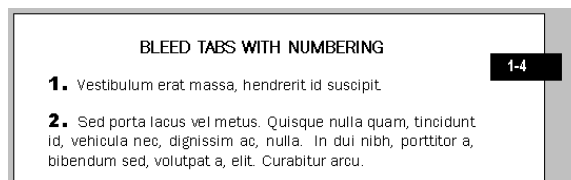


When a bleed tab reaches the bottom of the page, the next tab start at the top of the next page.

**NOTE:** A maximum number of cycles must be coded in the FOSI. In this example, ten tabs descend the page before returning to the top of the next page. The FOSI is coded for three cycles. After that, the bleed tabs descend off the bottom of the page.

**Figure 351** Bleed tabs cycle to top of page

Preview Extended Pages shows how the tab “bleeds” off the edge of the page.

**Figure 352** Preview Extended Pages display

The first page has no facing verso page, so an opening `rectopg` is used to output the first paragraph number on the recto page through the last paragraph number on the same page. The bleed tab on all other recto pages outputs the first number of the facing verso page through the last number on the recto page.

The `pageres` in the opening `rectopg` contains a `savetext` for this purpose. The `savetext` in the `versopg` `pageres` sets the first verso page paragraph number for the bleed tabs in the rest of the document.

The second `rectopg` utilizes a `pageref` to reference the `pagespec` `body.recto0`.

### Figure 353 Double-page spread bleed tabs

```
<counter initial="0" style="arabic" enumid="bleedtabct">
<counter initial="0" style="arabic" enumid="paract">
<stringdecl textid="bleedtab-space.app" literal="">
<stringdecl textid="paract.txt" literal="">
<stringdecl textid="verso-first-paract.txt" literal="">
...
<pageset id="body.page">
<rectopg width="5in" nomdepth="4in">
<pageres>
<enumerat increm="1" enumid="foliact">
<savetext textid="foliact.txt" conrule="foliact">
<savetext textid="verso-first-paract.txt" conrule="paract.txt[FI]">
</pageres>
<pagespec pgid="body.recto0">
...
<region xoff="27pi" yoff="2.25pi" width="4pi" height="20pi" layer="-1">
<usetext source="bleedtab-space.app"></usetext>
<usetext source="spacefill,verso-first-paract.txt,\-\,paract.txt[BO],
spacefill,@3pi">
<subchars charsubsetref="block center bold">
<font inherit="1" famname="Arial Narrow">
<indent inherit="1" leftind="0" rightind="*+4pi" firstln="*">
<highlt inherit="1" fontclr="#FFFFFF">
<boxing toffset="12" boffset="6pt" trel="first" brel="last" siderel="text"
inclr="#000000">
<enumerat increm="1" enumid="bleedtabct">
<savetext textid="bleedtab-space.app" append="1"
conrule="<linebreak.fmt>,\ \,</linebreak.fmt>">
...
<usetext source="<check-bleedtabct.psu>,</check-bleedtabct.psu>">
...
<rectopg width="5in" nomdepth="4in">
<pageres>
<enumerat increm="1" enumid="foliact">
<savetext textid="foliact.txt" conrule="foliact">
</pageres>
<pageref pgidref="body.recto0">
</rectopg>
<versopg width="5in" nomdepth="4in" xvjstretch="max">
<pageres>
<enumerat increm="1" enumid="foliact">
<savetext textid="foliact.txt" conrule="foliact">
<savetext textid="verso-first-paract.txt" conrule="paract.txt[FI]">
</pageres>
...
<e-i-c gi="para" context="section">
```

```
<charlist inherit="1" charsubsetref="block prespace">
<enumerat increm="1" enumid="paract">
<savetext textid="paract.txt" conrule="paract" placemnt="before">
<usetext source="paract.txt,\. \" placemnt="before">
...
<e-i-c gi="check-bleedtabct.psu">
<charlist inherit="1"></charlist>
<att logic="or">
<specval attname="bleedtabct" attloc="#FOSI" attval="10">
<specval attname="bleedtabct" attloc="#FOSI" attval="20">
<specval attname="bleedtabct" attloc="#FOSI" attval="30">
<charsubset>
<savetext textid="bleedtab-space.app" conrule="\" append="0">
...
<e-i-c gi="linebreak.fmt">
<charlist inherit="1" charsubsetref="block"></charlist>
</e-i-c>
```