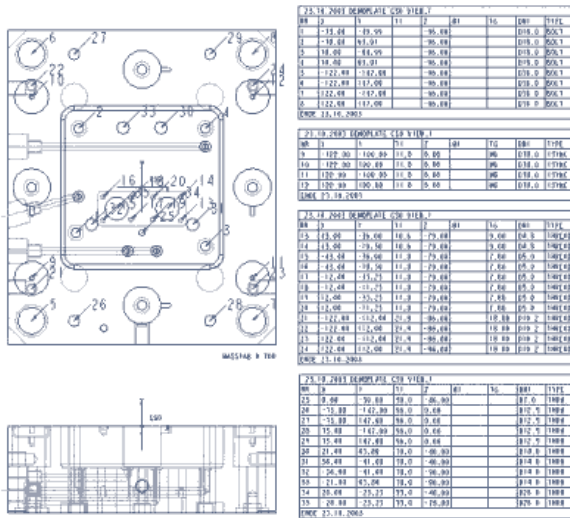


SmartHolechart 6.0



Recognition of all rotation symmetric geometry elements and UDFs

Graphic interactive definition of hole types

Free definition of output parameters and dimensions

Graphic interactive configuration of output (table-) format

Setting of different sorting criterias with priorities

B&W SmartHolechart enables you to print hole, cutout and UDF information in Pro/ENGINEER models to drawing tables or ASCII-files. Unlike other holechart solutions the recognition of holes is not based on recognition of feature types but on a geometry based feature recognition.

You can define your own **bore types** with the basic elements **cylinder**, **cone** (chamfer), **radius** and **thread**.

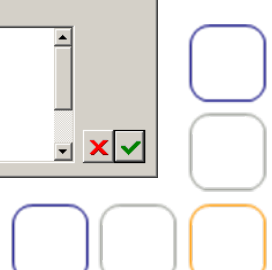
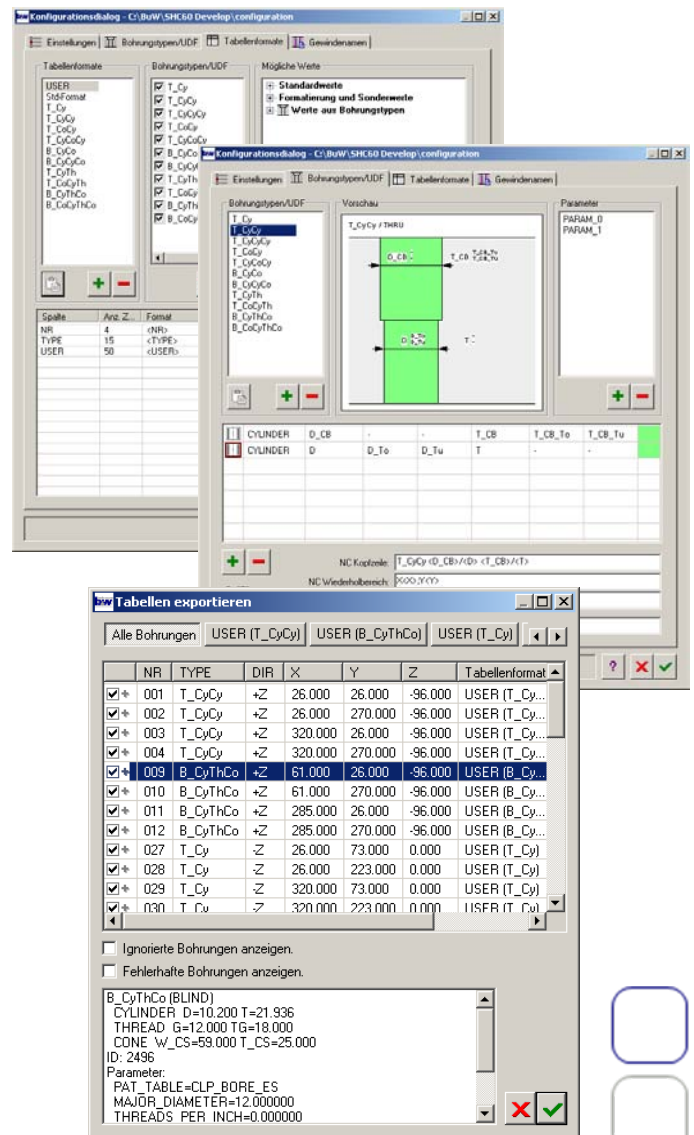
Guided by a **graphic editor** you can define the table formats, the dimensions to show and their format as well as sorting criteria's for the tables.

Check the content of the table before placing it on the drawing. You can define to which table and in which view the holes are output.

There are a lot of configuration options available to customize SmartHolechart optimal to your requirements.

Advantages of SmartHolechart are:

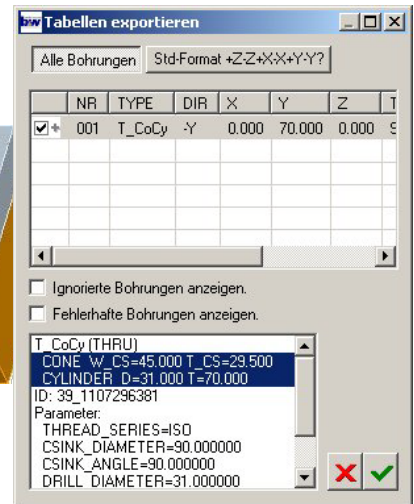
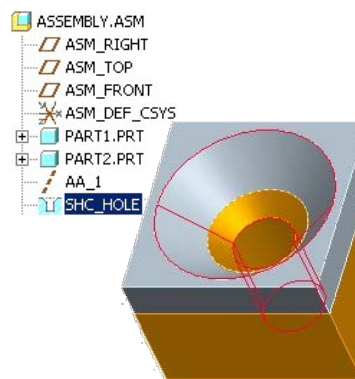
- Recognition of all rotation symmetric geometry elements
- Recognition of local groups and UDFs
- Graphic interactive definition of hole types
- Free definition of output parameters and dimensions
- Graphic interactive configuration of output format
- Setting of different sorting criterias with priorities



News in SmartHolechart 6.0

Assemblies are now supported

- The assembly can be handled like a welded assembly
- If holes go thru more than one part they are merged together
- Also single parts from an assembly can be selected. Then only the geometry from this part is taken into consideration

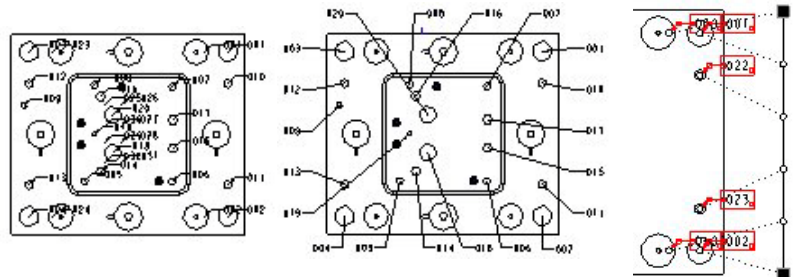


Exclude Geometry

- Exclude geometry like surfaces, features, components or models to ignore it in further evaluations

Drawing Management

- Place notes automatically or along a line. The leaders of the note do not overlap
- Move or rearrange tables
- Reorder rows in a table
- Place tables automatically



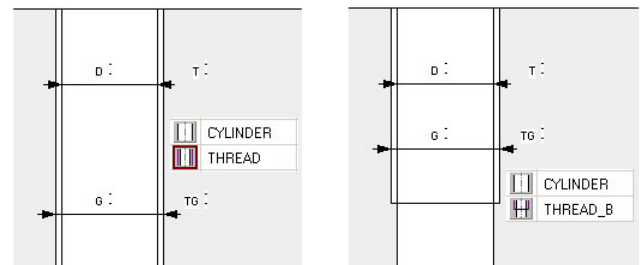
Color Holes

- Define a color scheme for each hole type to color the holes in the model



New Element Type: THREAD_B

- Easy differentiation between thru threads and threads with variable thread depth



More News

- Now it is possible to enter values like $D < 10.0$ or $D \geq 10.0$
- The position of the note is now adjustable
- Use your own predefined table heads
- And many more

Supported Platforms: Windows 2000, XP, XP64, Vista, Vista x64

Supported Pro/ENGINEER Versions: Pro/ENGINEER Wildfire 2, Wildfire 3, Wildfire 4 and Wildfire 5

License types:

Extension: License is locked to a Pro/ENGINEER session. Shut down Pro/ENGINEER to release the license

Floating Option: License can be allocated and released any time during a Pro/ENGINEER session