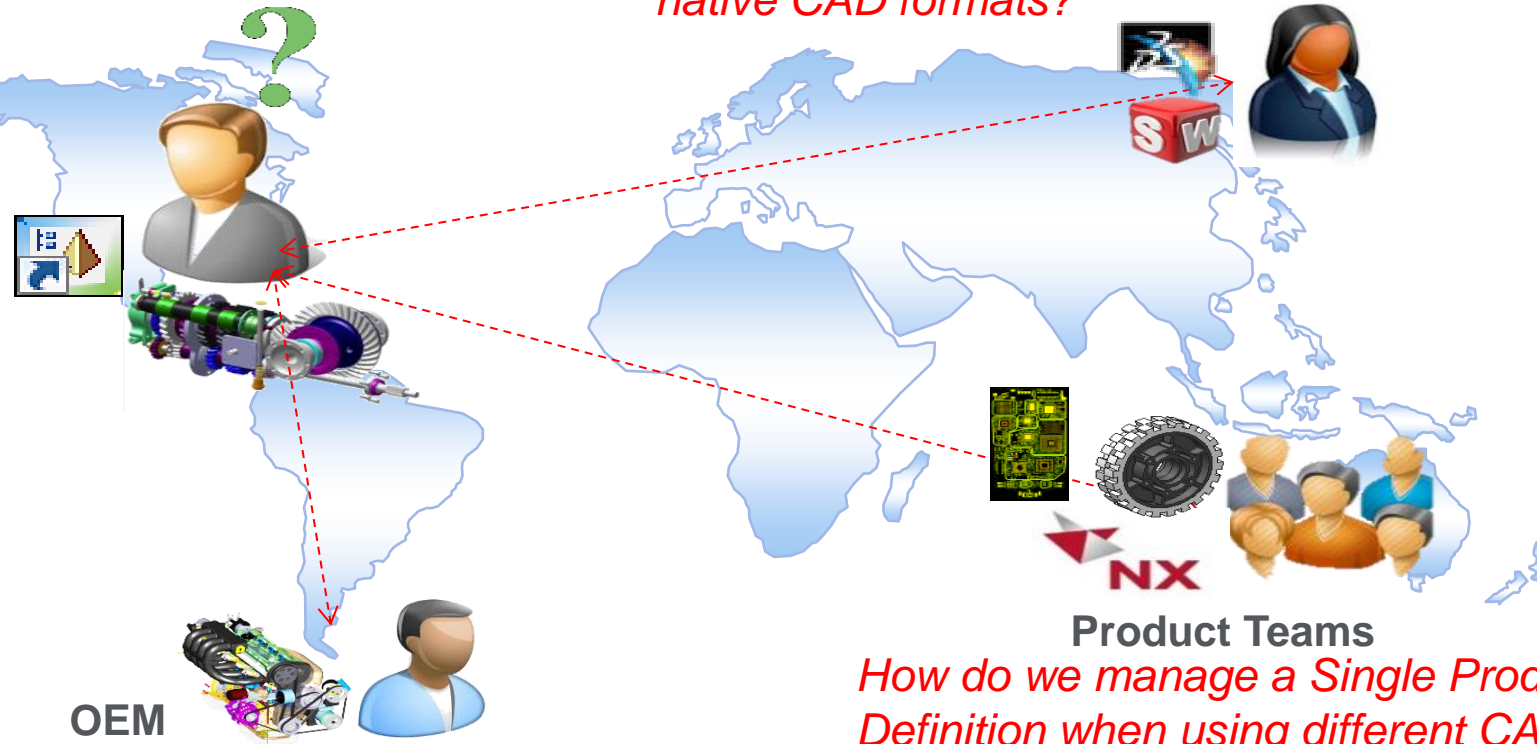




- PTC Creo Unite Technology Overview
- PTC Creo Unite and PTC Windchill
  - Best Practices
  - Demo Scenario
  - Where to find more information
- Q&A



*How do we incorporate designs in non-native CAD formats?*



*How do we manage a Single Product Definition when using different CAD environments?*

*How do we manage the delivery of data in different CAD formats to customers/partners?*

## Common Challenges

- Manage a Single Product Definition when designing in multiple CAD environments
- Need to deliver data in specific CAD formats to customers/suppliers
- Limited reuse and/or sharing of existing designs available in different CAD formats

## Negative Consequences

- Inability to validate and verify the Product Definition during the lifecycle
- Data duplication as designs are re-created from scratch in native CAD environment
- Limited traceability of data provided to customers / partners in non native CAD formats

## Metrics

- Money lost due to late changes causing product delays
- Time spent in recreating design in native CAD environment
- Time spent on reworking designs due to incorrect deliverables

## Enabling Optimal Multi-CAD Collaboration and Consolidation

- **Import** common 3D CAD formats
  - SolidWorks, CATIA, NX, Solid Edge, Inventor formats
- **Open** key 3D CAD formats
  - SolidWorks, CATIA, NX formats
- **Automatically update** new versions of non-PTC Creo data within your designs
- **Save As** key 3D CAD formats
  - SolidWorks, CATIA, NX formats



<sup>1</sup> Working with Multi-CAD? Overcoming the Engineering Collaboration Bottleneck – Aberdeen Group  
<sup>2</sup> PTC survey of 7,000 manufacturing organizations, October, 2011

**Consolidate CAD systems** to improve quality, speed time to market and lower costs for both Engineering and IT

## CONSOLIDATION

**BEST IN CLASS COMPANIES ARE 35% MORE LIKELY TO STANDARDIZE ON ONE CAD SYSTEM<sup>1</sup>**



**59% OF PEOPLE HAVE DIFFICULTY MANIPULATING IMPORTED MODELS<sup>2</sup>**

## COLLABORATION

**Support more effective product development and drive on-time delivery** by working more efficiently with other departments, suppliers or development partners.

<sup>1</sup> Working with Mult-CAD? Overcoming the Engineering Collaboration Bottleneck – Aberdeen Group

<sup>2</sup> PTC survey of 7,000 manufacturing organizations, October, 2011

PTC Creo 3.0 supports CAD Collaboration:

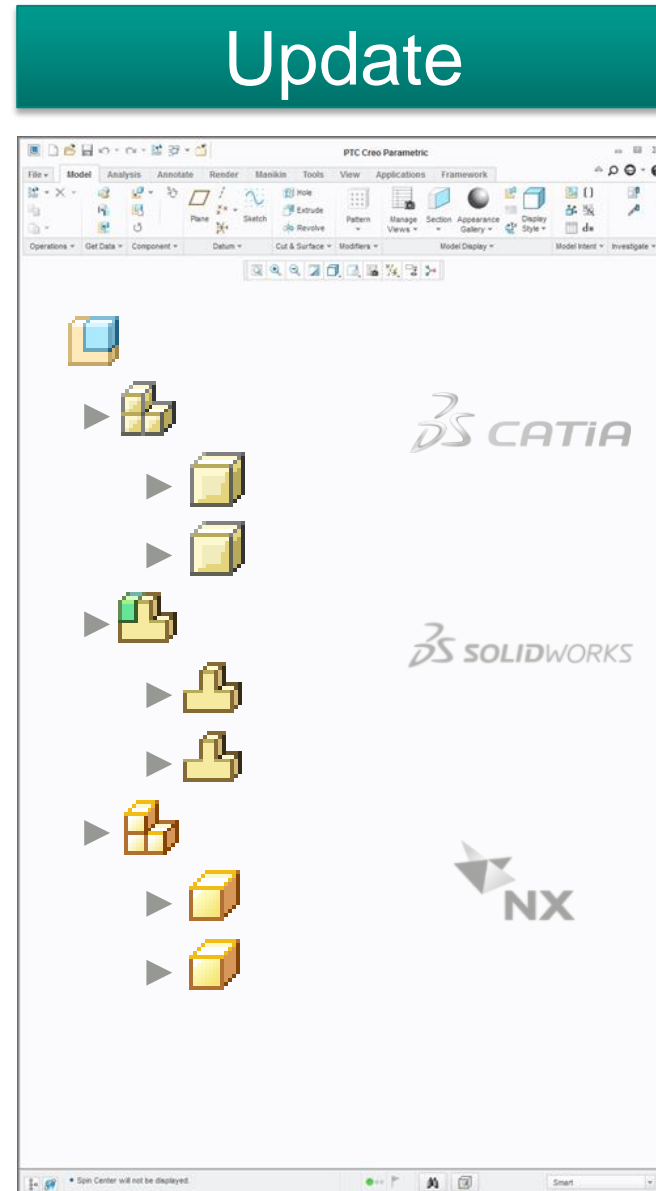
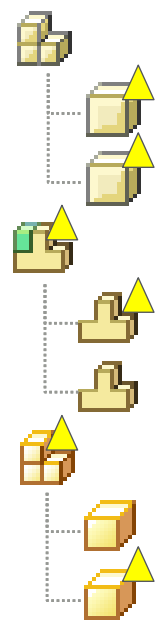
- **Import** common 3D CAD formats
  - SolidWorks, CATIA, NX, Solid Edge, Inventor formats
- **Open** key 3D CAD formats
  - SolidWorks, CATIA, NX formats
- **Automatically update** new versions of non-PTC Creo data within your designs
- **Save As** key 3D CAD formats
  - SolidWorks, CATIA, NX formats

59% OF PEOPLE HAVE  
DIFFICULTY MANIPULATING  
IMPORTED MODELS<sup>2</sup>

## COLLABORATION

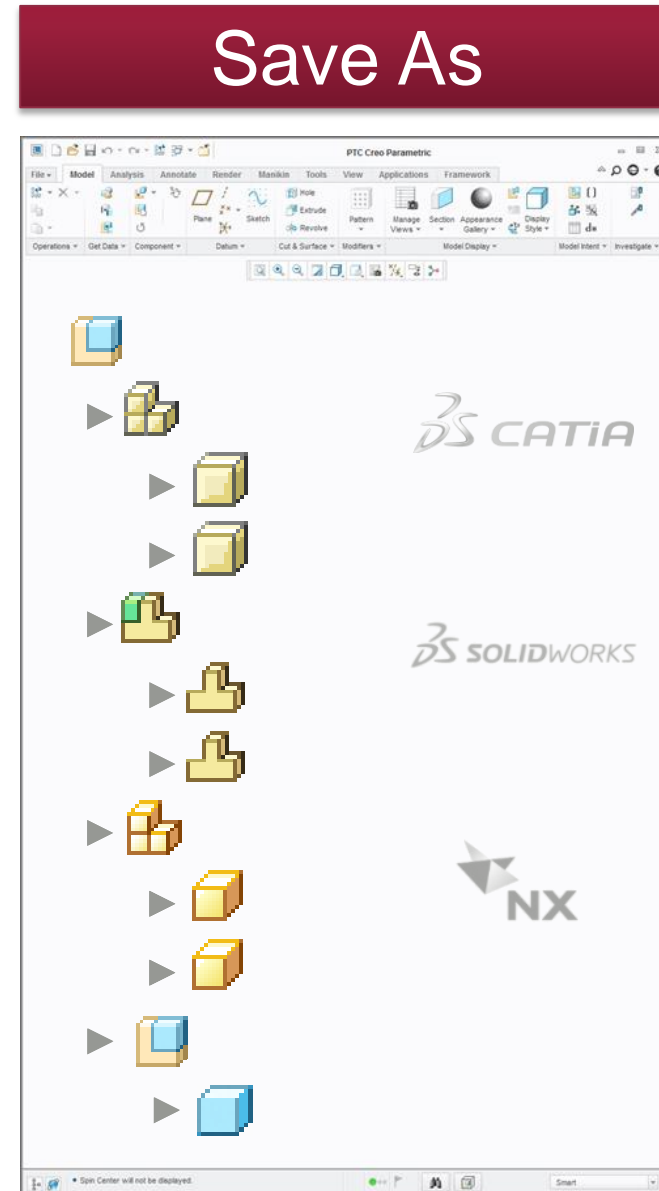
Support more effective  
product development and  
drive on-time delivery by  
working more efficiently with other  
departments, suppliers or  
development partners.



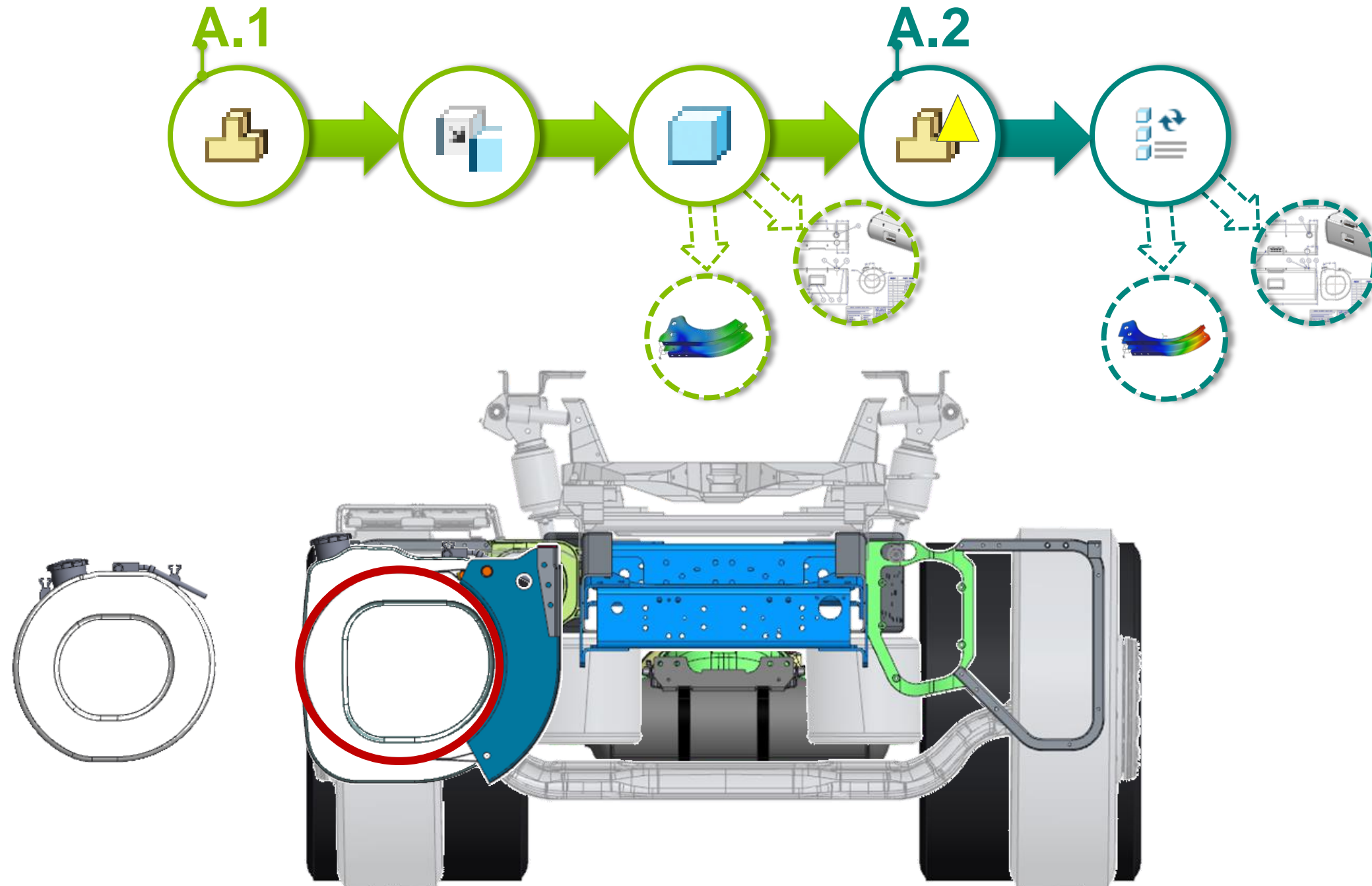


With the PTC Creo Collaboration Extensions, you can easily update and incorporate changes from SolidWorks, CATIA or NX formats.

With the PTC Creo  
Collaboration  
Extensions, you  
can easily save  
your data in  
SolidWorks, CATIA  
or NX formats.

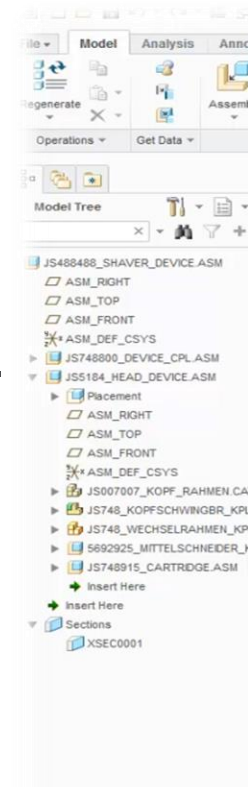




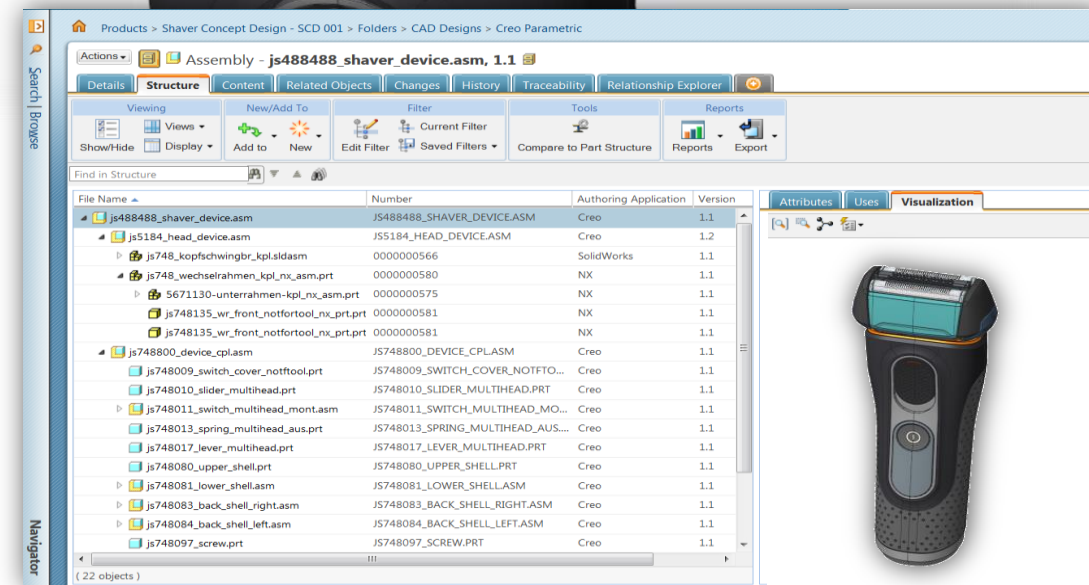


## Multi-CAD Collaboration in a data managed PTC Windchill environment

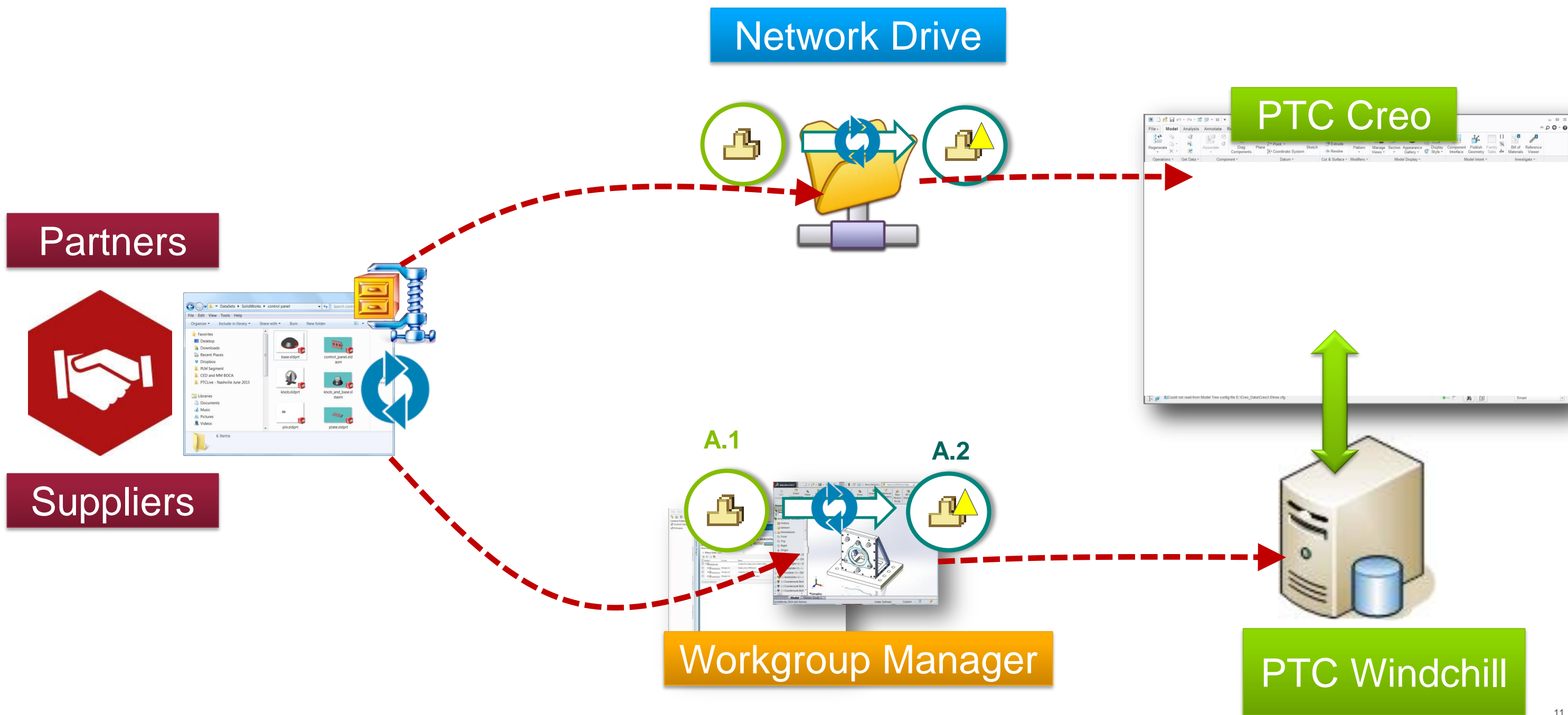
- Leverage SolidWorks, NX or CATIA data from Windchill directly in PTC Creo
  - Directly Open (not Import) from Windchill
  - Get PDM updates via PTC Creo workspace / PTC Creo Notification Center (Note: Collaboration Extension license pre-req)
- Streamlined data management of Multi-CAD Creo Designs
  - Single CAD structure in PTC Windchill including foreign CAD



File Name	Number	Authoring Application	Version
js488488_shaver_device.asm	JS488488_SHAVER_DEVICE.ASM	Creo	1.1
js5184_head_device.asm	JS5184_HEAD_DEVICE.ASM	Creo	1.2
js748_kopfschwingbr_kpl.sldasm	0000000566	SolidWorks	1.1
js748_wechselrahmen_kpl_nx_asm.prt	0000000580	NX	1.1
5671130-unterrahmen-kpl_nx_asm.prt	0000000575	NX	1.1
js748135_wr_front_notfortool_nx_prt.prt	0000000581	NX	1.1
js748135_wr_front_notfortool_nx_prt.prt	0000000581	NX	1.1
js748800_device_cpl.asm	JS748800_DEVICE_CPL.ASM	Creo	1.1



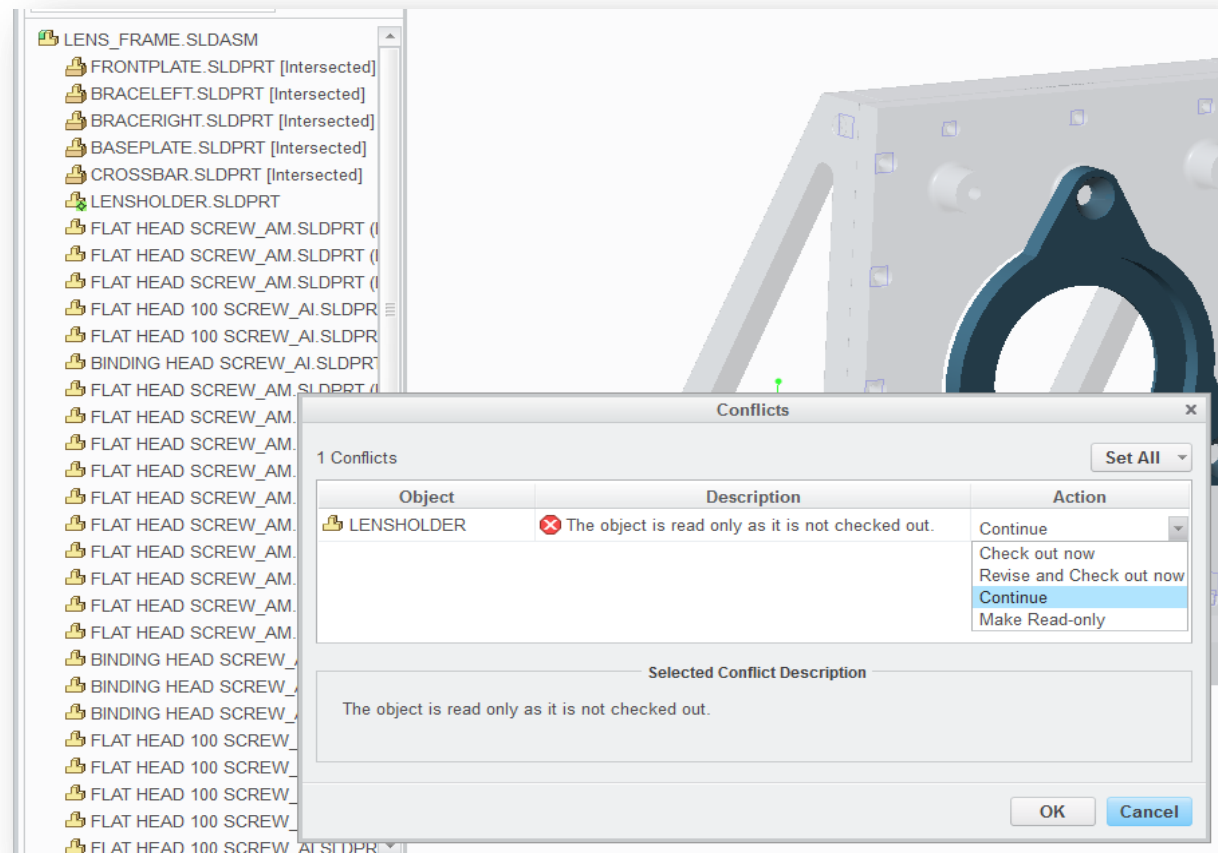
Collaborating with Suppliers/Partners providing Foreign CAD data



## Managing changes on Foreign CAD data in PTC Creo

- **Conflict Management options**

- All changes made in the Foreign CAD model in PTC Creo will NOT be reflected back in the (foreign) CAD model as viewed in Authoring Applications
- For 'What If' scenarios in PTC Creo, use 'Continue' as Conflict resolution option as Check out Now will attempt to check out the model
  - Note: If you do 'Check Out' the foreign CAD document, make sure you perform a 'Cancel Checkout' in PTC Creo (or in workspace)

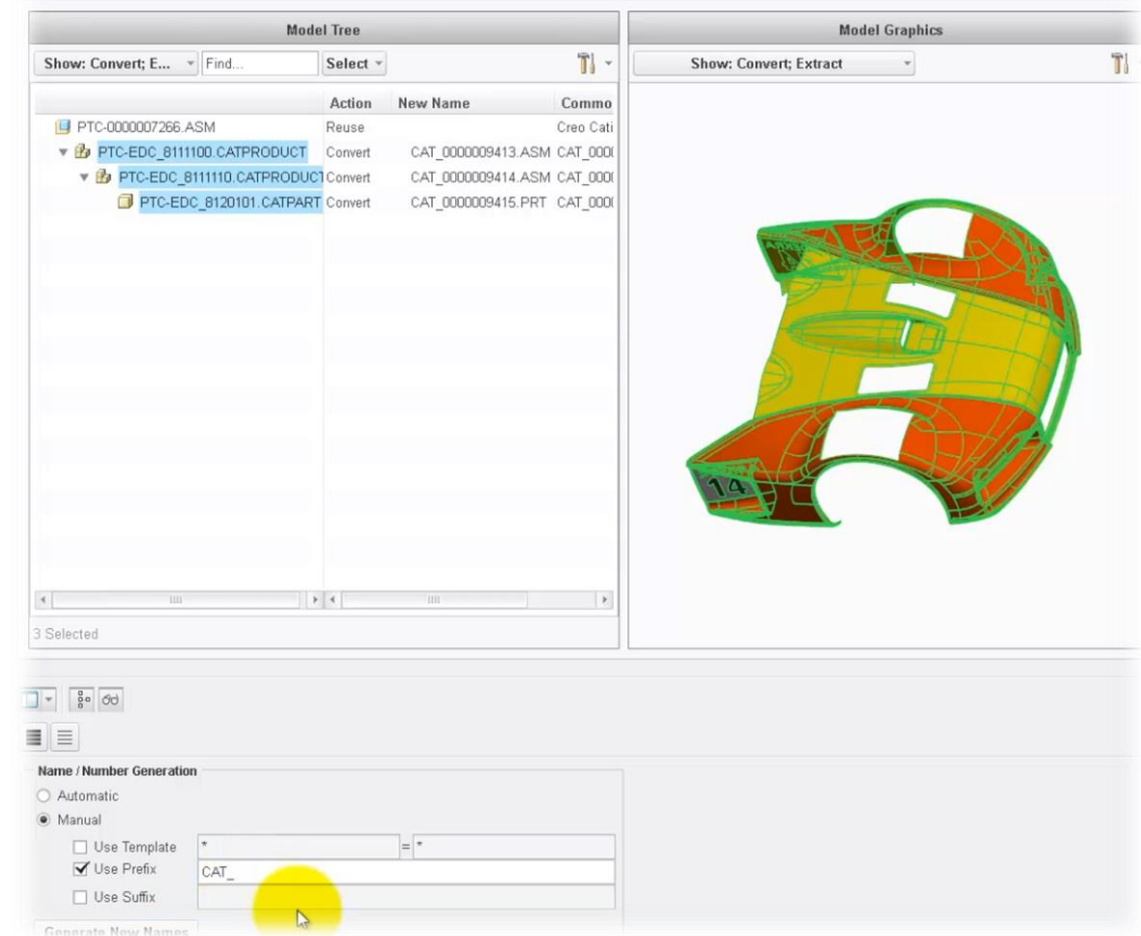
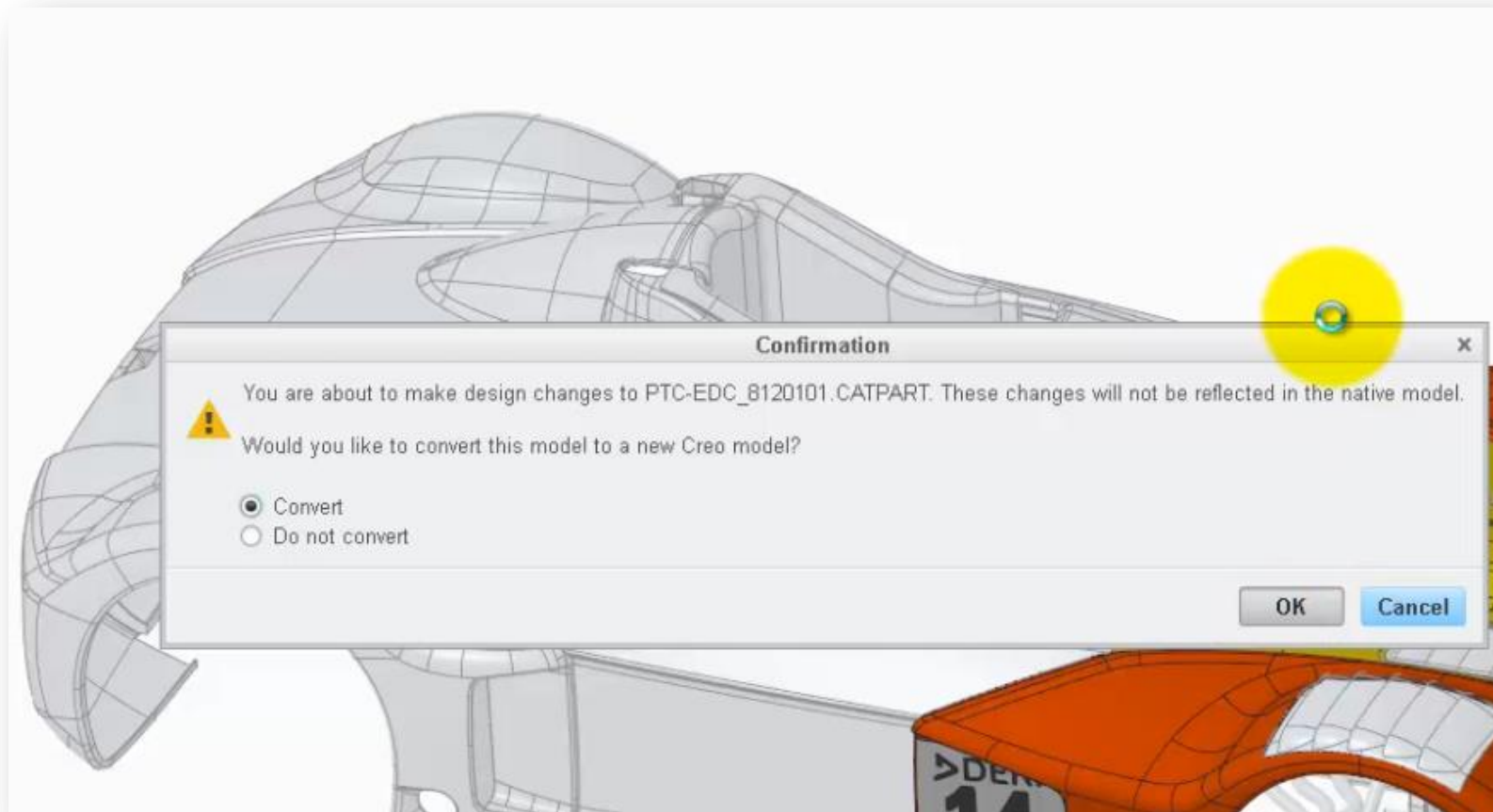


## Managing changes on Foreign CAD data in PTC Creo

- **Converting Foreign CAD data to PTC Creo**

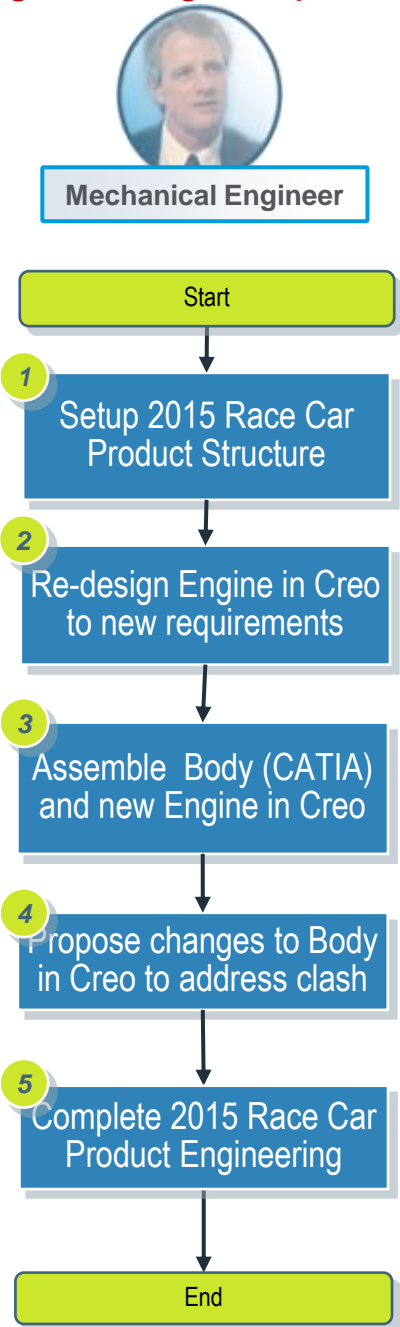
- Options:

- ‘Convert’ : Choose this option if you’d like to keep modifying this model in PTC Creo going forward. Creates a TIM PTC Creo Model (with source-image link to the native CAD model).
- ‘Do not Convert’ : Choose this option if you’d like to make temporary changes in the PTC Creo “wrapper” of the foreign CAD models



# Demo Scenario: Hybrid Engine Design for 2015 Race Car model

Engineering Requirements: Increased horsepower needs larger air flow and re-design of plenum and corresponding body design change



Where to get more information....

- **PTC Creo Parametric Help Center**  
[http://help.ptc.com/creo\\_hc/creo30\\_pma\\_hc/usascii/](http://help.ptc.com/creo_hc/creo30_pma_hc/usascii/)
- **Using PTC Creo Parametric with PTC Windchill**  
[https://support.ptc.com/view?im\\_dbkey=157383](https://support.ptc.com/view?im_dbkey=157383)
- **CS188975: PTC Creo Unite Technology interaction Support Detail, Implications and Caveats**  
<https://support.ptc.com/appserver/cs/view/solution.jsp?n=CS188975>

The screenshot shows a PTC support article page. At the top, it says "Home > Support" and "Document - CS188975". Below this is a "Document Information" table:

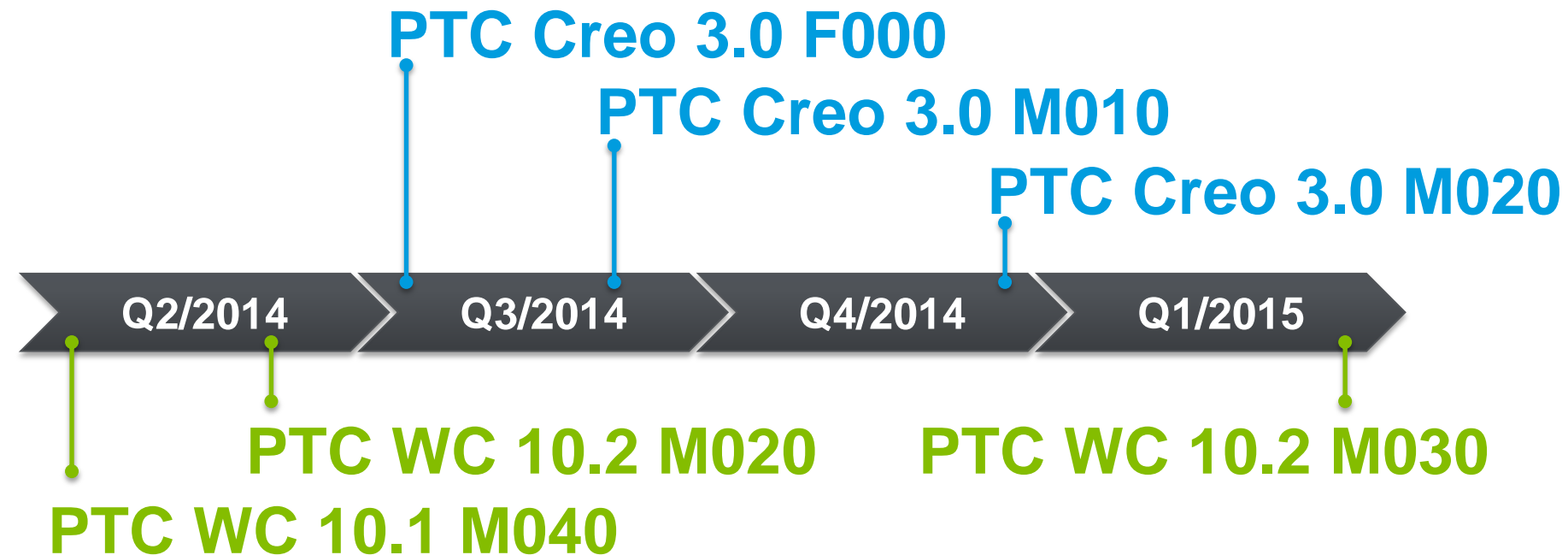
Type	Article
Date Created	22-Apr-2015 10:49:58 EDT
Date Last Updated	22-Apr-2015 10:57:52 EDT
Other Versions Available	<span>🇯🇵 Japanese</span> <span>🇨🇳 Simplified Chinese</span>

To the right of the table is a "Document Actions" box with "Refresh Data" and "Subscribe to this Document" links.

Below the table is the "Document Details" section:

<b>Title</b>	PTC Creo Unite Technology interaction with Windchill PDMLink 10.2: Information, Support Detail, Implications and Caveats
<b>Description</b>	<ul style="list-style-type: none"><li>• Where can details regarding <b>PTC Creo Unite Technology</b> be found?</li><li>• With the introduction of simplified <b>File &gt; Open</b> workflows that leverage <b>PTC Creo Unite Technology</b>, there are <b>implications and caveats</b> when working with multi-CAD design data in PTC Windchill</li><li>• This article provides an <b>overview</b> of the <b>use cases</b> and <b>workflows</b>, plus a <b>list of known issues</b> affecting this powerful capability</li></ul>
<b>Applies To</b>	<ul style="list-style-type: none"><li>• Creo Parametric 3.0 M020 and later</li><li>• Windchill PDMLink 10.2 M020 and later</li><li>• Windchill ProjectLink 10.2 M020 and later</li><li>• Creo View 3.0 M020 and later</li><li>• Creo View Adapters 3.0 M020 and later</li><li>• Creo Illustrate 3.0 M020 and later</li></ul>
<b>Cause</b>	
<b>Resolution</b>	<ul style="list-style-type: none"><li>• <b>Overview</b><ul style="list-style-type: none"><li>• Refer to the following for detail regarding <b>PTC Creo Unite Technology</b>:</li></ul></li></ul>

At the bottom of the page, there is a title "Using PTC Creo Parametric™ with PTC Windchill®" and "PTC Windchill 10.2 M030". A page number "83" is visible in the bottom right corner of the document content area.



- **Availability of Unite Technology:**

- PTC Creo 3.0 F000:
  - SolidWorks, CATIA, NX & Inventor Import
  - SolidWorks, CATIA & NX Update and Save As
- PTC Creo 3.0 M010:
  - SolidEdge Import
- PTC Creo 3.0 M020:
  - Simplified Open, Update and Convert on-demand workflows for SolidWorks, CATIA & NX

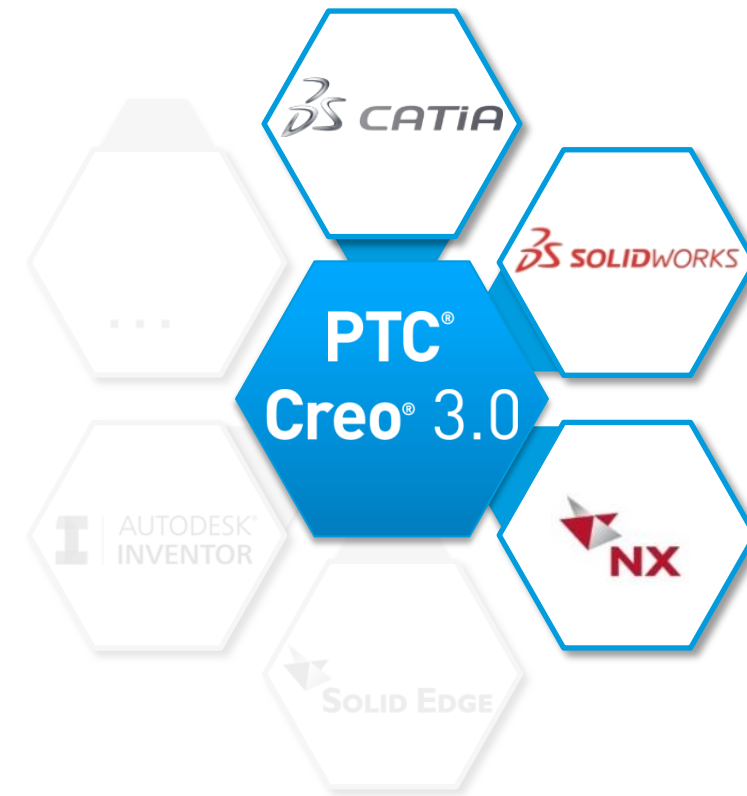
- **PTC Windchill compatibility:**

- Unite Technology available with PTC Creo 3.0 F000 and M010 will be compatible with
  - PTC Windchill 10.1 M040 and
  - PTC Windchill 10.2 M020
- Simplified Open, Update & Convert on-demand workflows available in PTC Creo 3.0 M020 will be compatible with
  - PTC Windchill 10.2 M030



PTC Creo Unite Technology enables Superior Collaboration

- Update and Save As Key 3D CAD Formats
- Build Better Designs
  - Start collaborating between Multi-CAD design teams early
  - Design in Context of Multi-CAD assemblies with confidence
  - Build design intent across 3D CAD formats easily
  - Keep all models updated
- Complete Enterprise Process Coverage
  - Build associative drawings
  - Build associative structural, thermal, dynamic analyses
  - Build Multi-CAD modular product architecture
  - Full support of downstream manufacturing and documentation processes



- Your feedback is valuable
- Don't miss out on the chance to provide your feedback
- Gain a chance to win an instant prize!
- Complete your session evaluation now

# PTC<sup>®</sup> Live Global