

PTC® Live Global

CUST317 - Quality and Speed for PTC Windchill Deployments through Dedicated PLM Testing Team

Yogesh Khanzode

Lead – Enterprise PLM Testing, GIS GPO, Whirlpool Corporation

06/10/2015

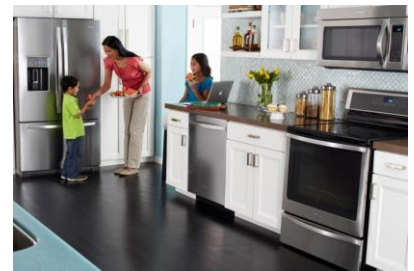


About Whirlpool Corporation

PTC® Live Global



- The number one major appliance manufacturer in the world, with approximately \$20 billion in annual sales, 100,000 employees and 70 manufacturing and technology research centers throughout the world in 2014.
- The company markets *Whirlpool*, *KitchenAid*, *Consul*, *Maytag*, *Brastemp*, *Amana*, *Bauknecht*, *Jenn-Air*, *Indesit* and other major brand names in more than 170 countries.



Vision : Best Branded Consumer Products.... In Every Home Around the World

Mission : Create Demand and Earn Trust Every Day



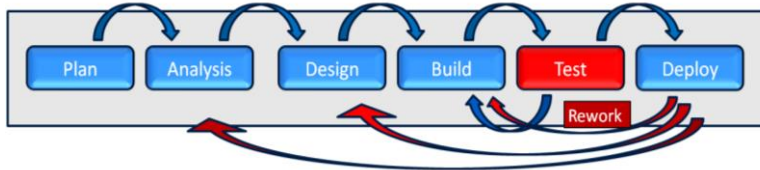
- Masters in Production Engineering with 16 years experience in Engineering Industry
- With Whirlpool for 11 years – India, United States
- Expertise in Product Development, Simulation, CAD Automation and PLM
- PTC Creo (Pro/E) user since 1998 and Windchill user since 2004
- Member of Whirlpool PLM Windchill team



- Setting up Context
- Operating model
- Testing Methodology
- Approach for PTC Windchill PLM Testing
- Value realisation graph
- Testing Deliverables for PTC Windchill major Project Deployments
- Challenges and Mitigation
- Next Steps - Roadmap

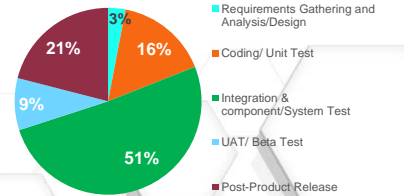


Important Drivers for Dedicated Testing Team :

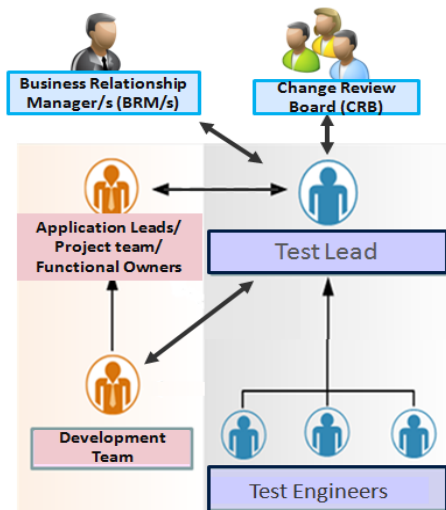


- There was no Whirlpool Testing team for PLM applications
- Project resources were consumed in testing
- Most of the time, Testing performed for ideal conditions/ key process steps and specific Scenarios
- High number of issues at deployment stage
- Opportunity to improve Performance benchmarking

Industry Trend of Defects Detection



Source: Extracts from chapter 5 from the National Institute of Standards and Technology (NIST) Report on "The Economic Impacts of Inadequate Infrastructure for Software Testing".

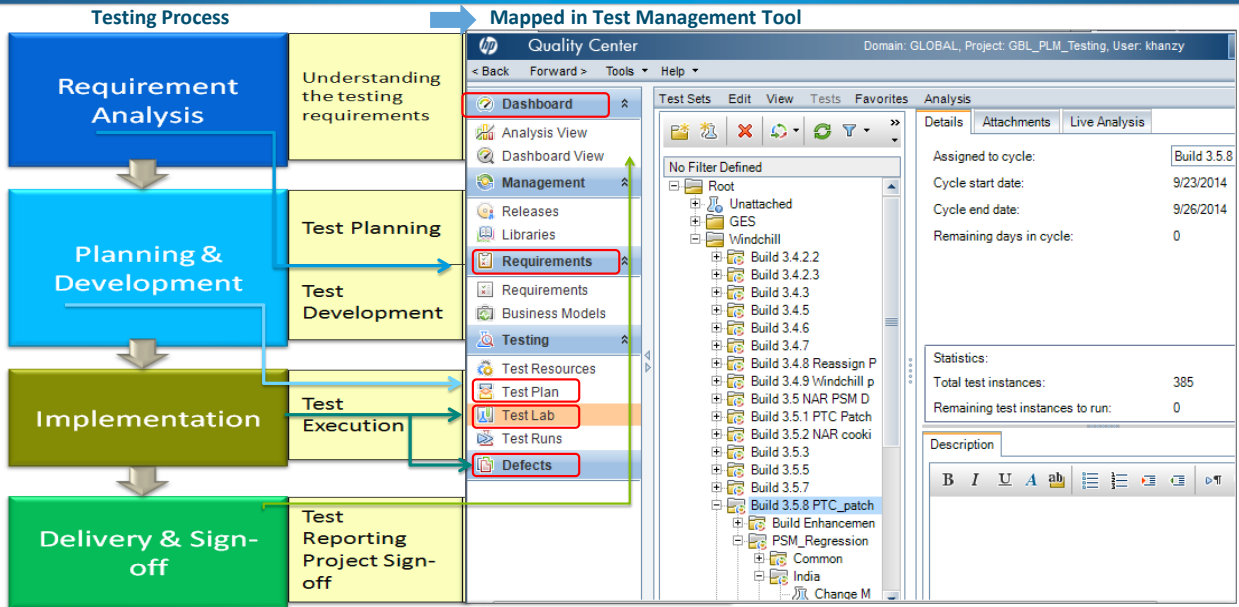


Test Lead

- Develop and implement Testing Strategy
- Own Test Management - HP Quality Center
- Ensure coordination between Development team, Project teams/functional owners, CRB and BRM
- Review /Validate the test cases, test reports and metrics
- Coordinate the day-to-day offsite service delivery
- Identify, initiate and institutionalize process improvement activities

Test Engineers

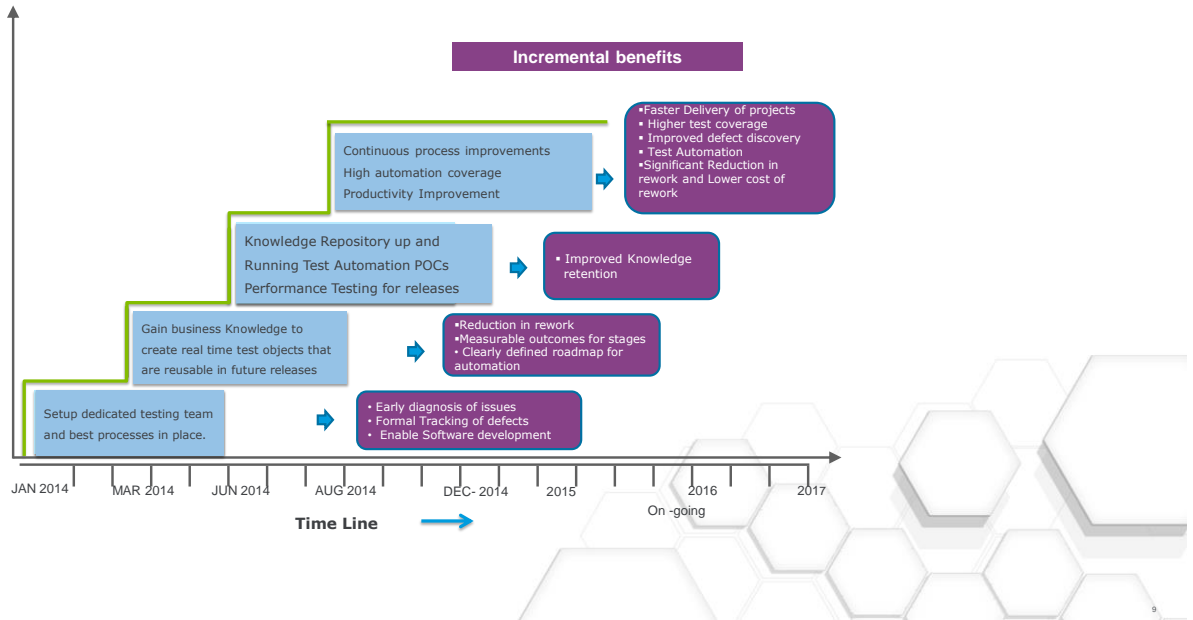
- Create test cases in HP quality center based on business and development inputs
- Participate in Requirements Gathering, part of functional and technical process review
- Execute test cases and record the results
- Documentation for testing
- Develop & execute test automation mechanism



- Identify key functional areas of overall Windchill landscape that company uses
- Update/develop required test cases
- Analyze and build required test cases for Interfacing applications like MRP, Project portfolio application, data classification application, in-house applications
- Streamline Regression test cases
- Develop and implement functional Test automation strategy. Automate Priority test cases and Windchill workflows
- Develop and implement functional Performance testing strategy. Major releases and upgrades are validated to meet performance targets.

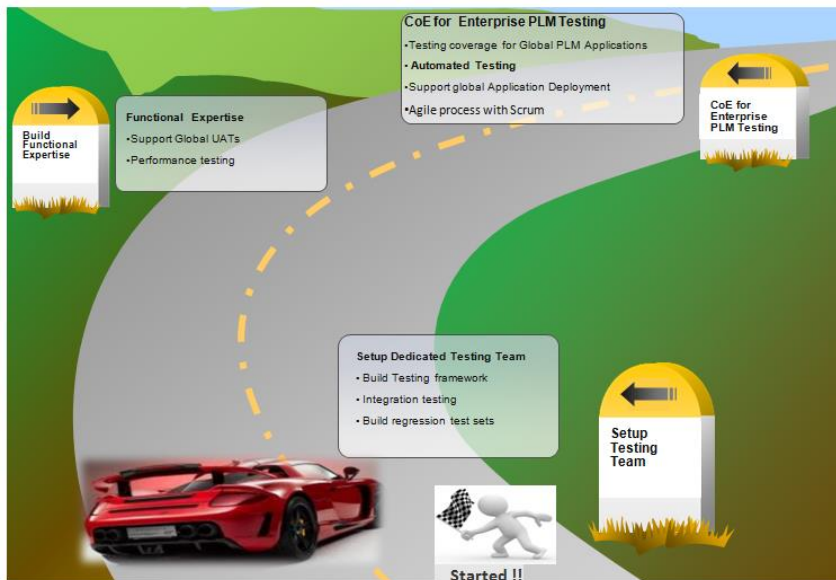
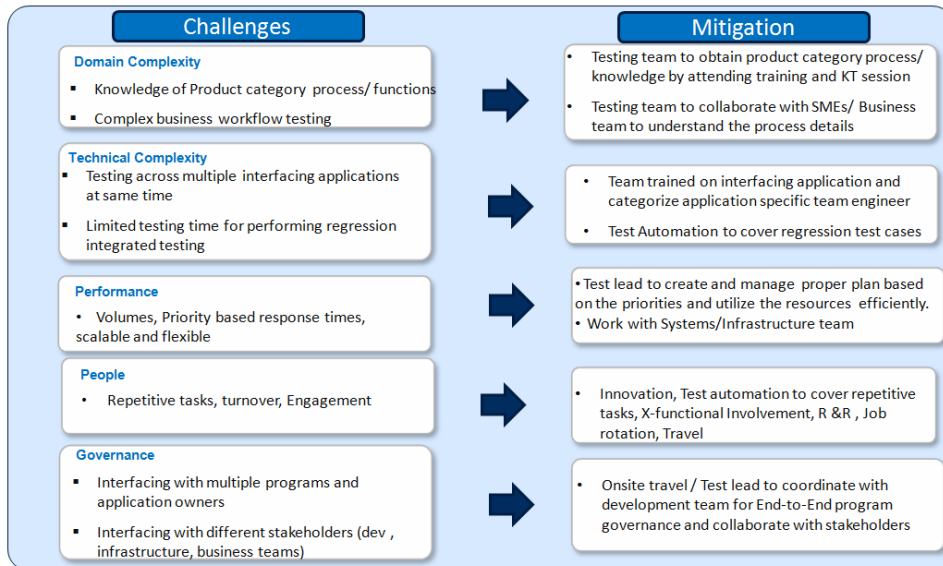


Value realisation graph



Testing Deliverables for PTC Windchill major Project Deployments





THANK YOU...

For any questions, feel free to reach out on email : Yogesh_Khanzode@whirlpool.com



- Your feedback is valuable
- Don't miss out on the chance to provide your feedback
- Gain a chance to win an instant prize!
- Complete your session evaluation now