



A FUTURE WITH 3D ENGINEERING AND AUGMENTED REALITY

Steven LaPha Jr.

CAD/PLM Administrator

NASA Kennedy Space Center – Engineering Service Contract

June 6-9, 2016

liveworx.com | #LIVEWORX



The slide features several large, colorful, semi-transparent geometric shapes in the corners: a green triangle in the top-left, a blue triangle in the bottom-left, a yellow triangle in the bottom-left, and a pink triangle in the bottom-left. These shapes are layered and overlap each other.

PREFACE

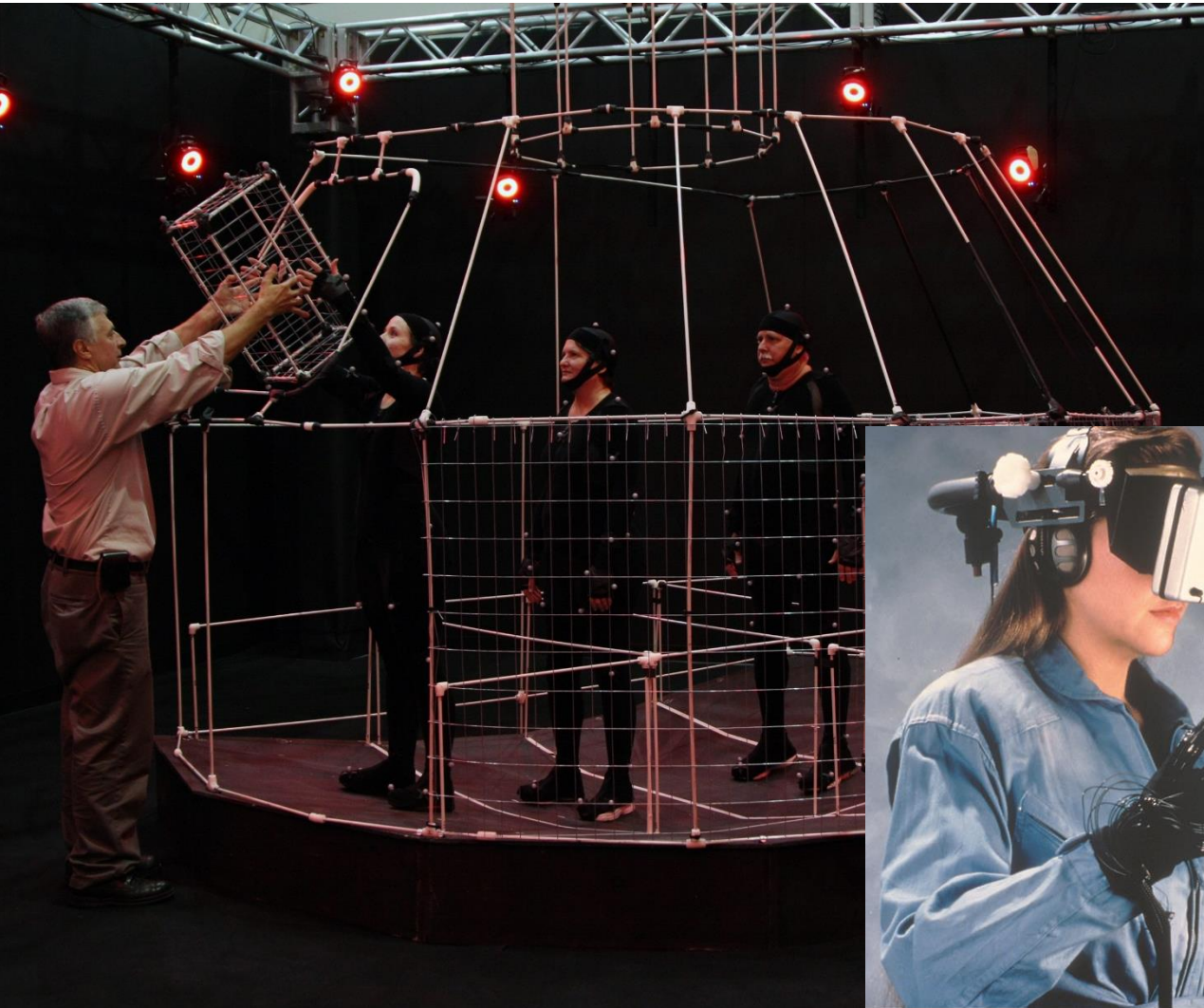
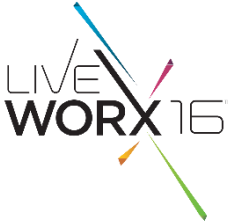
- The information in these slides is intended to be conceptual and doesn't necessarily represent technology as it exists today
- The content doesn't necessarily represent any specific tools, software, or projects unless otherwise specified
- Ideas expressed here are my own and do not necessarily represent the views of my company, contract, or contracting company

WHY?

ENGINEERING OF YESTERDAY



EXPERIENCE



THE BENEFIT OF AUGMENTED REALITY



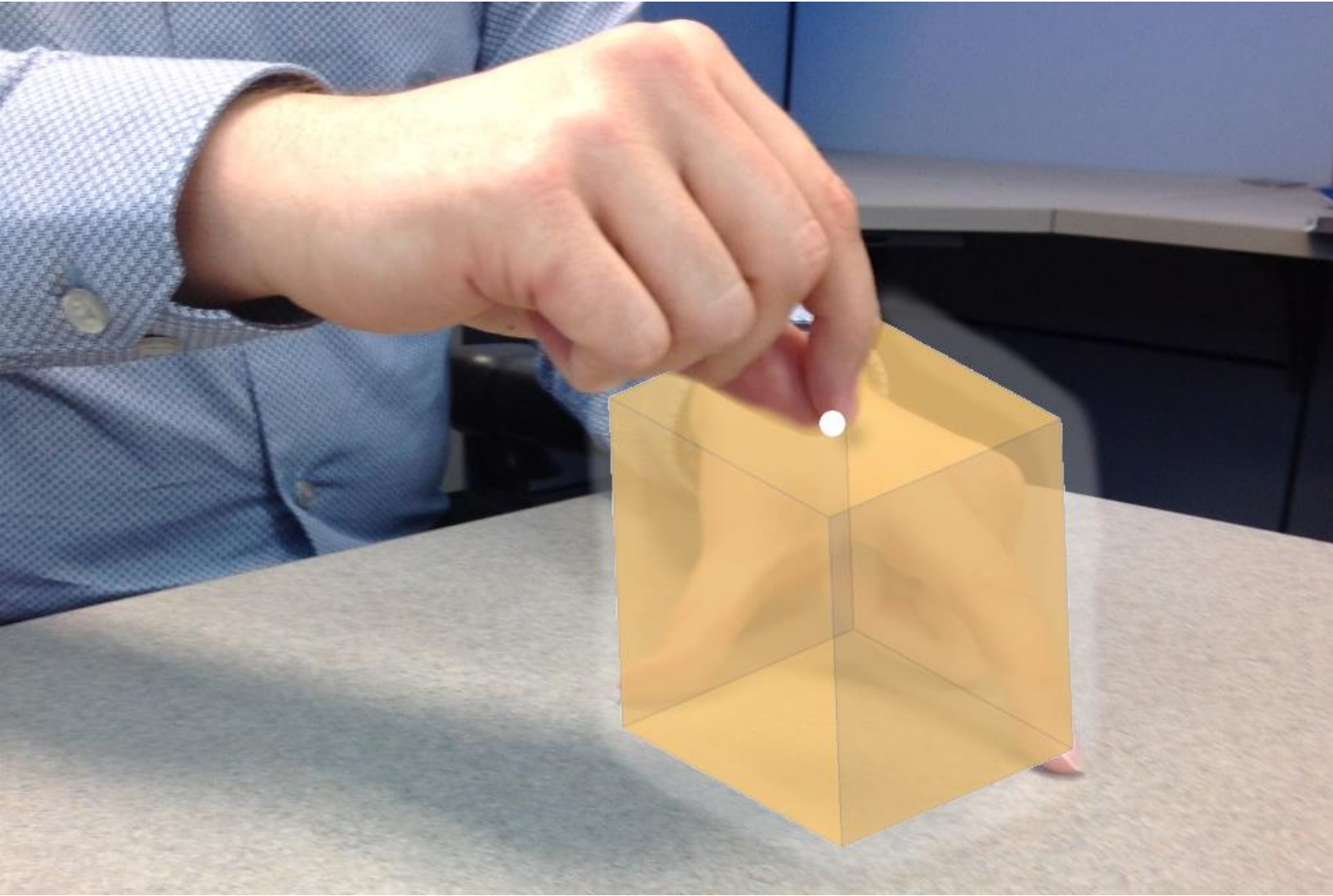
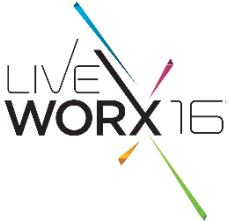
CURRENT CAPABILITIES OF AUGMENTED REALITY



VISUALIZE



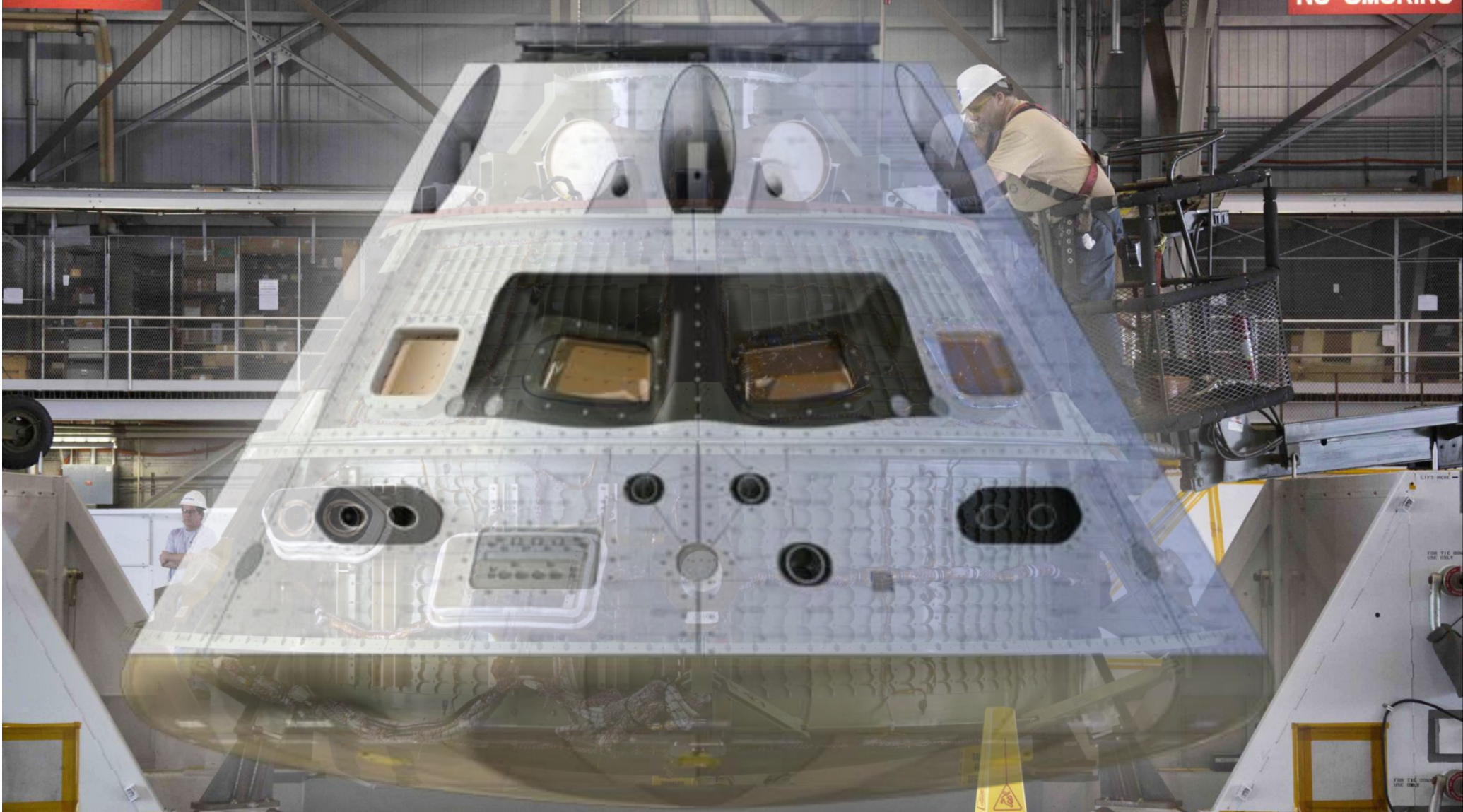
CONCEPTUAL DESIGN



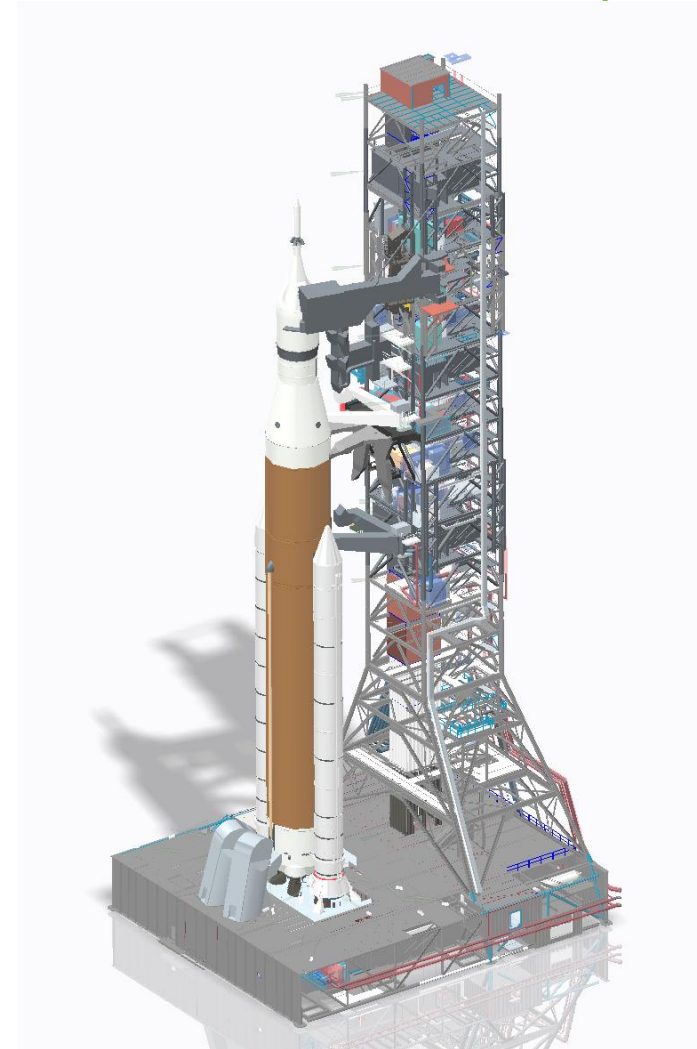
USER EXPERIENCE



OBJECT RECOGNITION



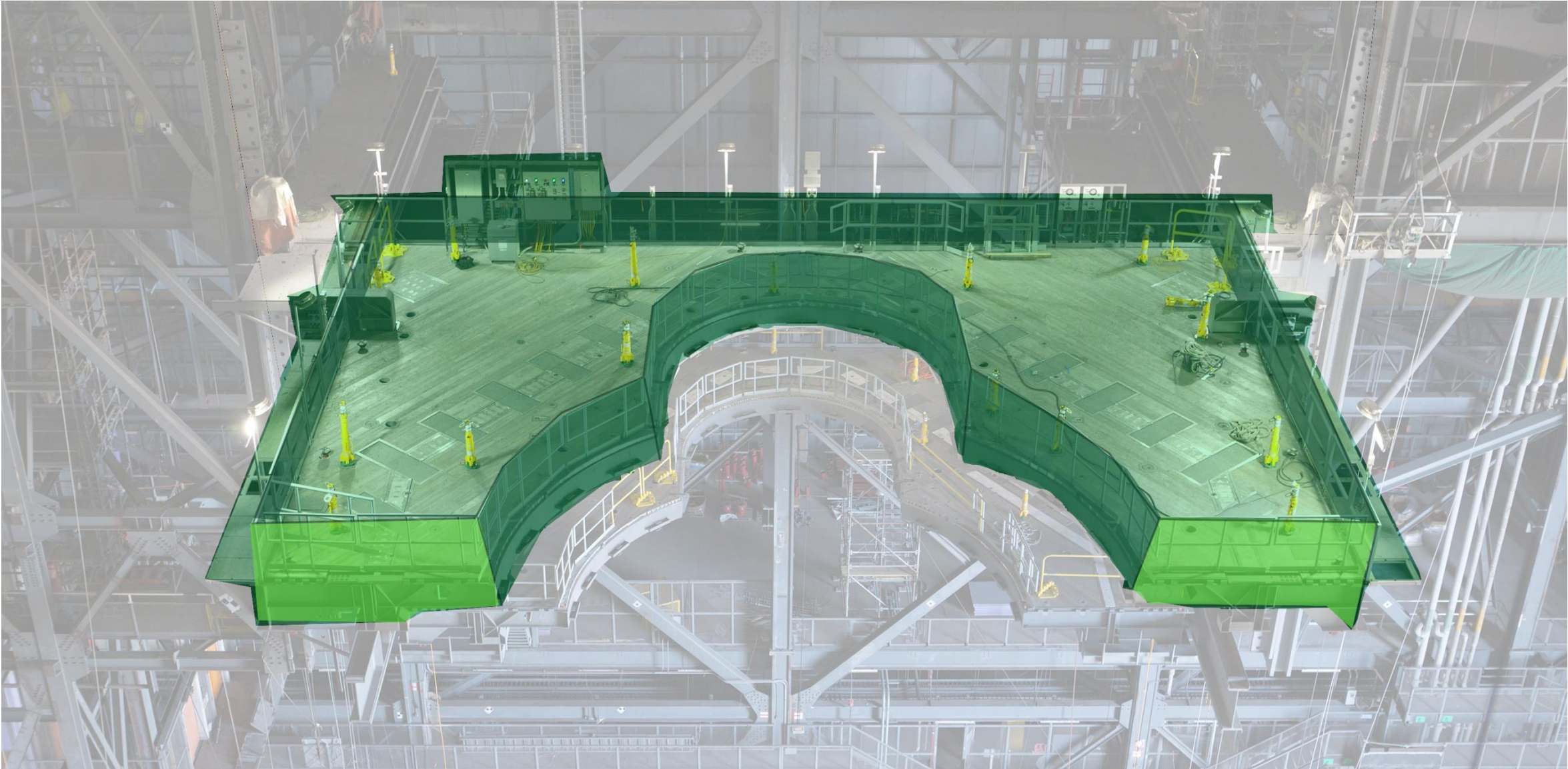
ADVANCED DESIGN



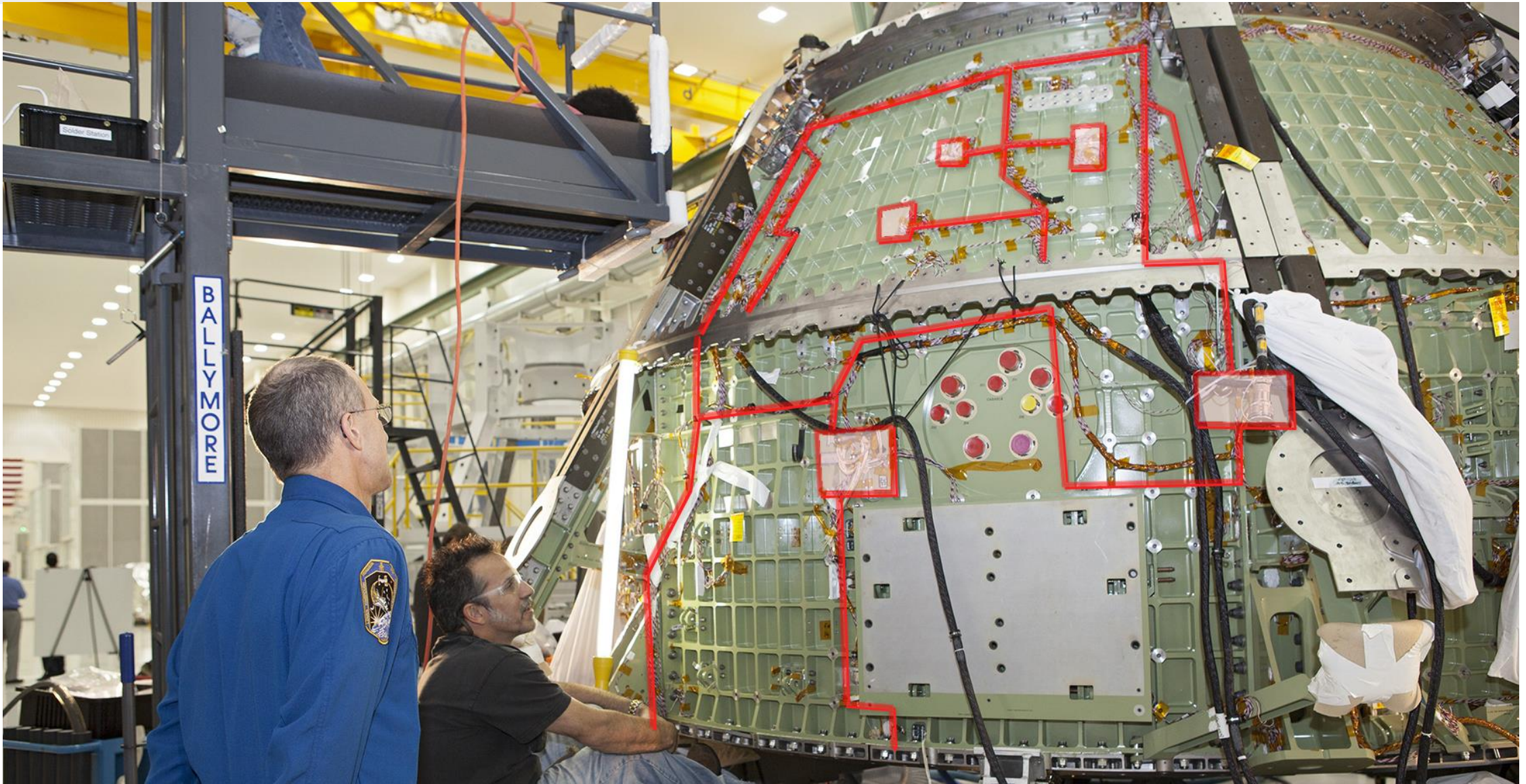
REMOTE ENGINEERING



3D CAPTURE AND COMPARE



2D TO 3D COMPARISON



A series of large, overlapping, colorful geometric shapes (triangles and polygons) in shades of pink, blue, yellow, and green, positioned on the left side of the slide. They appear to be layered, with some shapes partially overlapping others, creating a sense of depth and movement.

EXISTING PROJECTS PAVING THE WAY AHEAD

PROJECT SIDEKICK



<http://opslab.jpl.nasa.gov/>

INNOVATIVE DISPLAY AND ENVIRONMENTAL AWARENESS SYSTEM (IDEAS)



<http://www.nasa.gov/content/ideas-to-enhance-operations-on-earth-and-in-space>

3D VIEW APP



<http://www.nasa.gov/externalflash/3DV/>

- Seek use cases
- Push for improvement
- Start exploring
- If it doesn't exist, make it exist

The image features several colorful geometric shapes, primarily triangles and lines, scattered across the white background. A large, multi-colored triangular shape is prominent on the right side, composed of various shades of blue, green, yellow, orange, pink, and purple. Several thin, colored lines (blue, pink, green, orange) radiate from the center towards the edges of the frame. The text 'LIVE WORX 16™' is centered in the upper half, with 'LIVE' in a thin, outlined font and 'WORX 16™' in a bold, solid black font.

LIVE WORX 16™

TAKE A FRESH LOOK AT THINGS

liveworx.com