



Release Notes

Version 4.0

Windchill Requirements Connector

January 2021

1

Release Notes

Hardware and Operating Systems	3
Release 4.0	5
License Administration.....	6

Windchill Requirements Connector maintenance releases are provided periodically to address critical software issues. Install the most current maintenance release to ensure that you have the latest fixes. Customers should look to this vehicle to obtain fixes for Software Performance Reports (SPRs) they have reported to PTC.

Hardware and Operating Systems

In order to install Windchill Requirements Connector, we recommend a computer with the following specification:

The minimum system requirements are:

- At least 2 GB RAM (3 GB recommended)
- At least a 2 GHz processor (Dual Core recommended)
- At least 4 GB of free disk space (8 GB recommended)
- At least a resolution of 1024*768
- Windows 10 (64bit), Windows Server 2008 R2 (64bit) or Windows Server 2012 (64bit), Windows 2016 (64bit)

Windchill Requirements Connector supports the following versions of Windchill RV&S (formerly Integrity Lifecycle Manager):

- 10.5 — 12.2.1 (ILM)
- 12.3 — 12.4 (Windchill RV&S).
- The following minimum permissions are needed to access Windchill RV&S:

Permission	Description
mks:im > Login	The Login permission grants access to Windchill RV&S. The general access, read and write permissions to the system are given.
mks:im > ViewAdmin (starting with Integrity Lifecycle Manager 10.9 this permission is not needed anymore)	The Windchill Requirements Connector creates mappings to exchange ReqIF data with Windchill RV&S. These mappings must be validated to ensure the correct import or export of the data. For that reason the executing user must be able to read the data model of Windchill RV&S. This right is granted by the ViewAdmin privilege. The user will not be able to make changes to the data model. The read process will run in background and is completely transparent to the user. The behavior of WRC is equivalent to the Windchill RV&S client.
mks:im > Connection Policy	The line "daemon.connectionPolicy=mks.ic.common.policy. ICAllowAllConnectionPolicy" must be set in the following file .../config/client/integrityclientsite.rc and the server has

	to be restarted after setting this permission.
Project permission	All commands run by WRC depend on the rights and roles granted to the executing user. Documents can only be exported from projects or imported into projects the user has access to.
Object permission	General read and write permissions are part of the rights and role concept of Windchill RV&S. This refers to queries, types, fields, state transitions, baselines, etc.

Windchill Requirements Connector supports the following versions of DOORS:

- DOORS 9.5, DOORS 9.6 32-bit and 64-bit client, DOORS 9.7
- DOORS Next Generation 6.0.3, 6.0.4, 6.0.5

For Global Replication, an Oracle database 10g Release 2, Oracle 11g, Oracle 12, Oracle 18c or Oracle 19c instance is needed. Oracle's free Express Edition (XE) can be used but is not recommended due to data storage capabilities.

The FLEXnet floating license server can only run on the Windows versions mentioned above.

Upgrade from Atego Requirements Synchronizer 2.4

Windchill Requirements Connector 4.0 can be installed to a new directory without uninstalling Atego Requirements Synchronizer 2.4. Please refer to the User Guide to import projects from Atego Requirements Synchronizer 2.4 into Windchill Requirements Connector 4.0

Licensing

New licenses are required for version 4.0. Please run the License request within the Connector via **Window ► Preferences ► Windchill Requirements Connector ► License Configuration ► Request License...** and send the request to wwlm@ptc.com. Please refer also to [License Administration on page 6](#)

Release 4.0

Highlights

Windchill Requirements Connector 4.0 includes the following highlights:

- **Re-branding to Windchill Requirements Connector**
 - Changed the tool name from PTC Integrity Requirements Connector to Windchill Requirements Connector.
 - Changed the client "PTC Integrity" (Integrity Lifecycle Manager) name to Windchill RV&S.
- **Automatic deselecting of read-only attributes during import.**
- **Support for Windchill RV&S 12.4**
- **Support for Oracle 19c**
- **Support for MIME type: application/vnd.visio2013 in embedded objects.**

Fixed Issues

Issue #	Description
SPR - 10312470	Support for Oracle 19c in Windchill Requirements Connector
SPR - 10529276	Importing a ReqIF file into Doors Classic with WRC the embedded objects are not shown (Support for MIME type: application/vnd.visio2013)
SPR - 10371564	More meaningful error message when the character length is exceeded
SPR - 11210086	Import error "Object: <ID> Attribute: abc Conversion failed. - Not enough bytes in object header."
SPR - 11148655	Missing OLE in Doors export from WRC (multiple OLE in different attributes in a single object)
SPR - 10532212	The default value of the enumeration field is missing in the imported content, although the default value is defined in reqif file

License Administration

Windchill Requirements Connector has been installed successfully

You can use three way of possibilities and priorities of license settings.

License Configuration : Add a license from **Window > Preferences > Windchill Requirements Connector > License Configuration > New path**

WRC_LICENSE environment variable : Specify the **WRC_LICENSE** environment variable during the installation. (e.g, **WRC_LICENSE = 27001@licenseserver**).

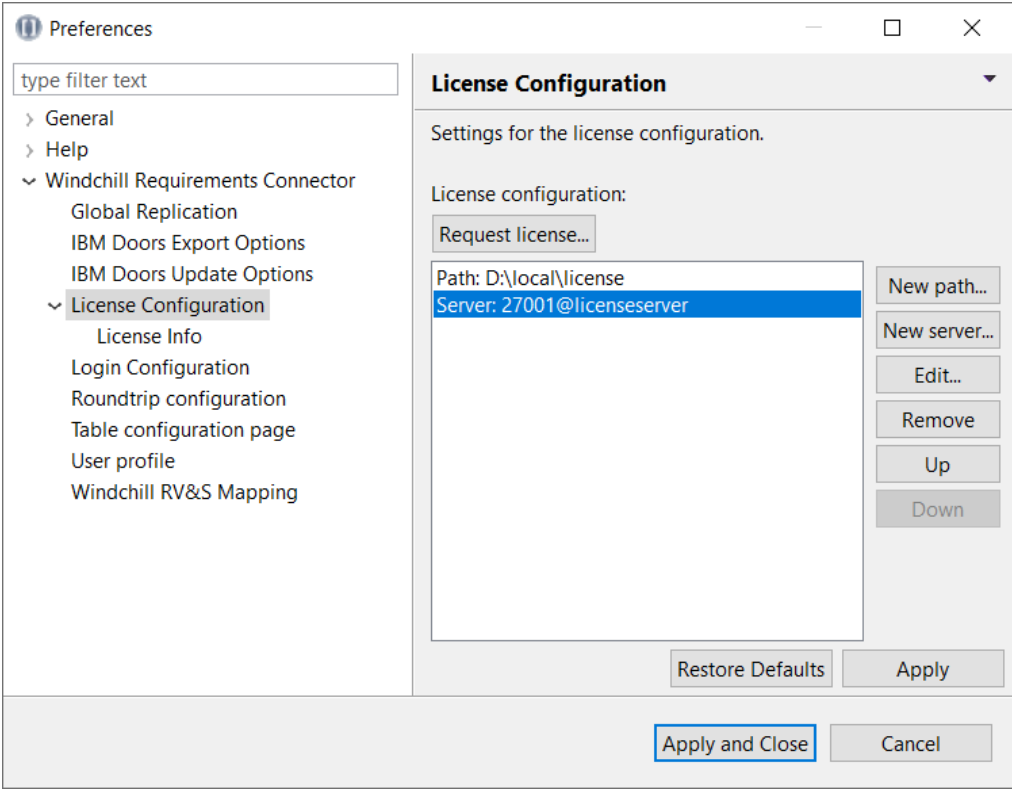
Installation path : Save the license file into **license** folder in the installation directory. (e.g, **C:\Program Files\PTC\Windchill Requirements Connector\license**).

After the installation is completed, you can apply for a licence by selecting the checkbox **Request license** on the last dialog page of the installer.

The license request should be generated automatically, if not it can be generated from Windchill Requirements Connector:

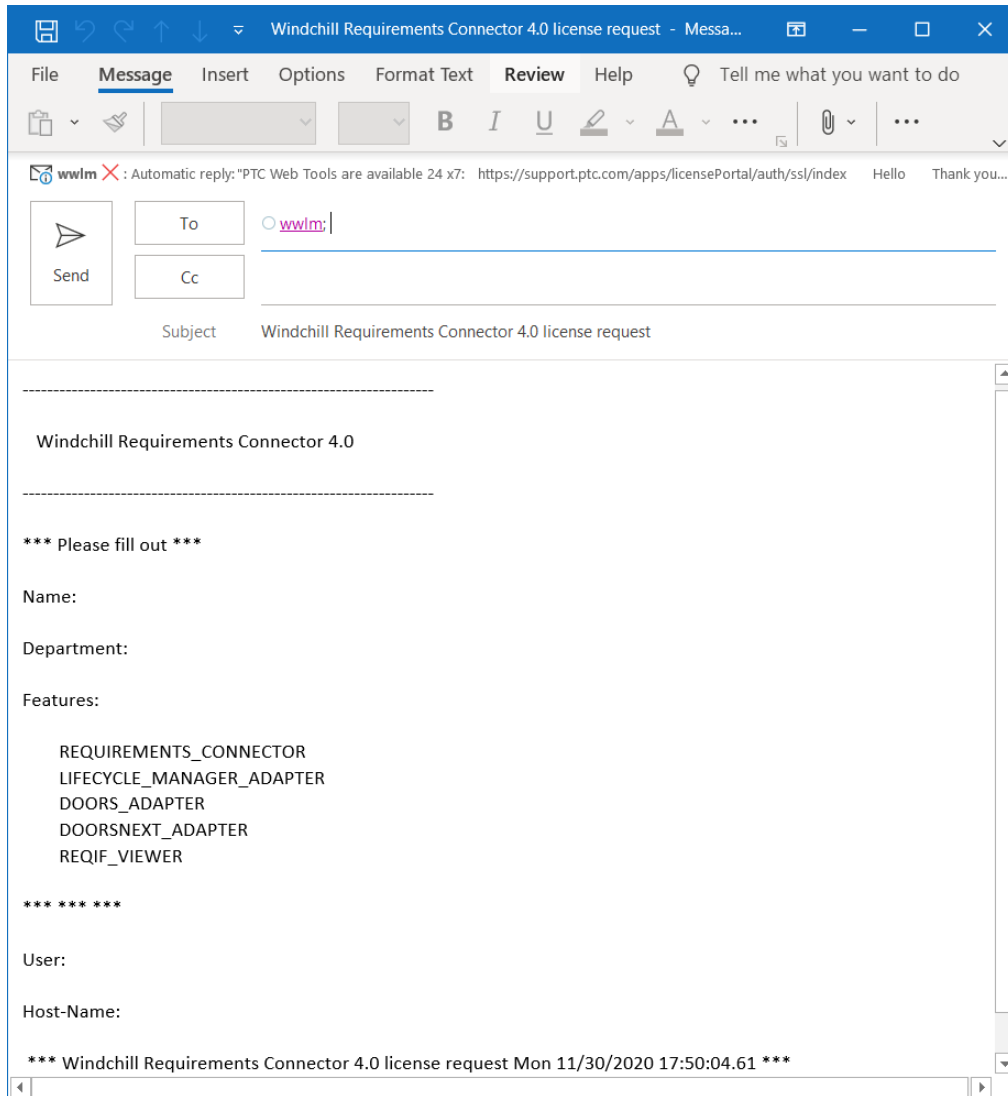
1. Open **Windchill Requirements Connector**
2. Navigate to **Window ► Preferences ► Windchill Requirements Connector ► License Configuration ► Request license**

License dialog



The license request will be generated and opened to be sent to wwlm@ptc.com

License request



You can also request a license by creating a case at <https://www.ptc.com/en/support/> with your license request attached.

3. Save the received license file on your machine 'e.g'. <INSTALL_DIR_PTC_CONNECTOR>\license\
4. Select **Window ► Preferences ► Windchill Requirements Connector ► License Configuration ► New path** to add the path to the folder where the license file has been saved.

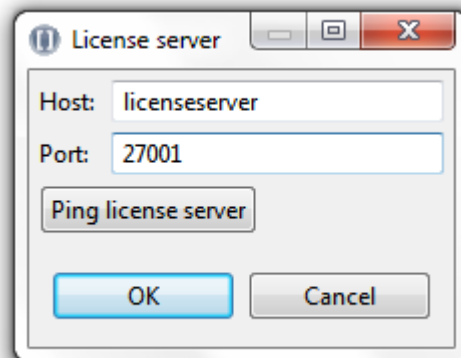
 **Note**

Windchill Requirements Connector automatically searches the path for valid licenses.

The path to the license file has been set.

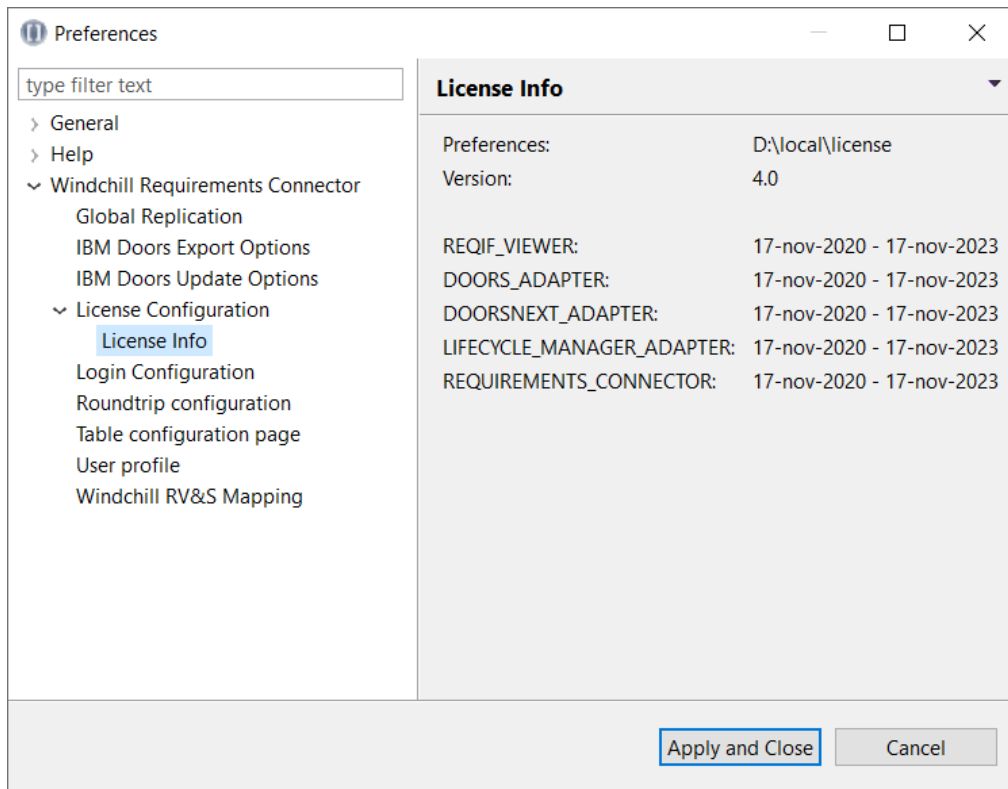
5. To set a license server select **New server...** and enter the license server credentials `host` and `port`.

Add new license server



- a. You can use **Ping license server** to verify whether the entered server is available.
 - b. Click **Ok** to finish the license server setup.
6. Specify the **WRC_LICENSE** environment variable during the installation.
 7. Verify your license by selecting **Window ► Preferences ► Windchill Requirements Connector ► License info**.

License info



Your license has been set up successfully.

Documentation Copyright

Copyright © 2021 PTC Inc. and/or Its Subsidiary Companies. All Rights Reserved.

User and training guides and related documentation from PTC Inc. and its subsidiary companies (collectively "PTC") are subject to the copyright laws of the United States and other countries and are provided under a license agreement that restricts copying, disclosure, and use of such documentation. PTC hereby grants to the licensed software user the right to make copies in printed form of this documentation if provided on software media, but only for internal/personal use and in accordance with the license agreement under which the applicable software is licensed. Any copy made shall include the PTC copyright notice and any other proprietary notice provided by PTC. Training materials may not be copied without the express written consent of PTC. This documentation may not be disclosed, transferred, modified, or reduced to any form, including electronic media, or transmitted or made publicly available by any means without the prior written consent of PTC and no authorization is granted to make copies for such purposes. Information described herein is furnished for general information only, is subject to change without notice, and should not be construed as a warranty or commitment by PTC. PTC assumes no responsibility or liability for any errors or inaccuracies that may appear in this document.

The software described in this document is provided under written license agreement, contains valuable trade secrets and proprietary information, and is protected by the copyright laws of the United States and other countries. It may not be copied or distributed in any form or medium, disclosed to third parties, or used in any manner not provided for in the software licenses agreement except with written prior approval from PTC.

UNAUTHORIZED USE OF SOFTWARE OR ITS DOCUMENTATION CAN RESULT IN CIVIL DAMAGES AND CRIMINAL PROSECUTION.

PTC regards software piracy as the crime it is, and we view offenders accordingly. We do not tolerate the piracy of PTC software products, and we pursue (both civilly and criminally) those who do so using all legal means available, including public and private surveillance resources. As part of these efforts, PTC uses data monitoring and scouring technologies to obtain and transmit data on users of illegal copies of our software. This data collection is not performed on users of legally licensed software from PTC and its authorized distributors. If you are using an illegal copy of our software and do not consent to the collection and transmission of such data (including to the United States), cease using the illegal version, and contact PTC to obtain a legally licensed copy.

Important Copyright, Trademark, Patent, and Licensing Information: See the About Box, or copyright notice, of your PTC software.

UNITED STATES GOVERNMENT RIGHTS

PTC software products and software documentation are “commercial items” as that term is defined at 48 C.F.R. 2.101. Pursuant to Federal Acquisition Regulation (FAR) 12.212 (a)-(b) (Computer Software) (MAY 2014) for civilian agencies or the Defense Federal Acquisition Regulation Supplement (DFARS) at 227.7202-1 (a) (Policy) and 227.7202-3 (a) (Rights in commercial computer software or commercial computer software documentation) (FEB 2014) for the Department of Defense, PTC software products and software documentation are provided to the U.S. Government under the PTC commercial license agreement. Use, duplication or disclosure by the U.S. Government is subject solely to the terms and conditions set forth in the applicable PTC software license agreement.

PTC Inc., 121 Seaport Blvd, Boston, MA 02210 USA