



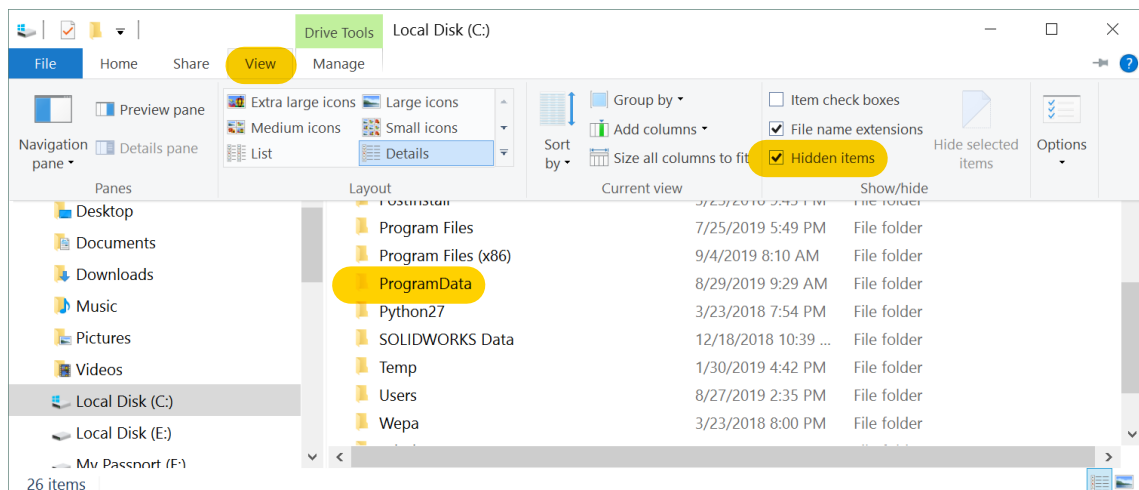
PTC Creo 6.0 - Student Edition - Quick Installation Guide

1. Download the **PTC Creo 6.0** DVD image:

- www.ptc.com/appserver/auth/it/esd/academicFree.jsp
 - If necessary, enter your PTC username (your email address) and password, and then click **LOG IN**.
Create an account at www.ptc.com/appserver/common/account/ptcacademic.jsp
 - Accept the Export Agreement and then click **Continue**.

2. If this is the first time you install Creo please jump to the next step. If you had older Creo editions installed on your computer, please go to **C:\ProgramData\PTC\Licensing** and delete all the older licenses (you can also move them to another folder until the Creo 6.0 is installed). After the folder is empty you can proceed with the next step.

*Please note that **ProgramData** is a hidden folder. The easy way to access this location is to simply copy **C:\ProgramData\PTC\Licensing** and paste it in the Windows explorer. You can also click-on **View**, select **Hidden items** (if you haven't already, select File name extensions), and you should now see the **ProgramData** folder.*



3. Unzip the downloaded DVD image (MED-100WIN-CD-430_###_Win64.zip):

represents the build code of Creo you downloaded. The actual number will vary as additional Creo builds are released.

Right-click the downloaded zip file, select **Extract All** and then select a location the DVD will be unzipped to. *Select a location you can easily access, such as your Desktop.*

- Use Windows Explorer to open the resulting **MED-100WIN-CD-430_M###_Win64** folder.
This folder can be copied to a shared drive, DVD or thumb drive and then be used to install the software on other computers.
- Temporarily disable all firewall, anti-virus and anti-spyware applications.
- Run **setup.exe**.
 - Right-click **setup.exe** and select **Run as administrator** from the pop-up menu.



4. From the PTC Installation Assistant dialog box:

- Select **Install new software** and click **Next**.
- **Accept** the license agreement and click **Next**.
 - In the **Simple License Entry** product code field, enter the product code **BK600908EDSTUDENTEDUNI** and then click **Install Licensing**.

The screenshot shows the 'PTC Web Installation Assistant' window. On the left is a green sidebar with a vertical list of steps: Introduction, Software Agreement, Licenses (highlighted), Application Selection, Installation, and Finish. The main content area is titled 'License Identification' and includes the PTC logo. It explains that licenses allow PTC to identify authorized applications. There are two sections: 'Simple License Entry' and 'Advanced License Entry'. The 'Simple License Entry' section has a text field containing 'BK600908EDSTUDENTEDUNI' and an 'Install Licensing' button. The 'Advanced License Entry' section is currently collapsed. Below these is a 'License Summary' section with instructions on how to manage detected license sources. It features a table with 'Source' and 'Status' columns, a 'Host ID' field, and a 'Skip Licensing' checkbox. At the bottom right are 'Back' and 'Next' buttons.

- Enter your PTC username (your email address) and password.
- Click **Login**.
- When you see the “**Success!**” message, click **Next**.
- In the application list, deselect all the applications you do not need, and then click **Install**.
- After the installation is complete, click **Finish**.

You are now ready to use PTC Creo 6.0 - Student Edition

- For additional resources, please visit www.ptc.com/academic-program.
- If you need technical support, please visit **Support Forum:**
communities.ptc.com/community/academic-program/support