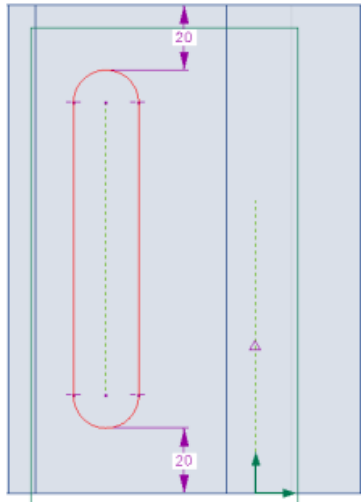


These notes apply to the FREE Education Edition of Creo for Schools

Pro|DESKTOP



why change to...

New ribbon menus

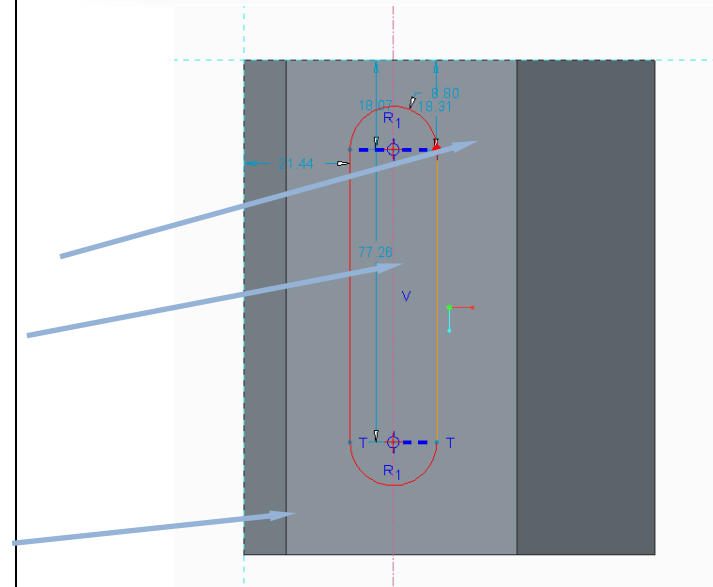
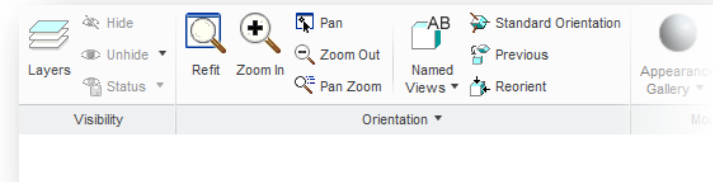
- Consistent Windows 7 style menus
- Reduced menus and mouse movement
- Streamlined workflow

Improved sketcher

Sketchers diagnostics include;

- Sketch on planar geometry without a new datum plane (workplane).
- Shaded profiles (not shown)
- Highlights open ends with red dots.
- Highlights overlapping geometry and line either side in red.
- Displays feature requirements. (not shown).
- References existing datum and geometry.
- Infinite undo (Ctrl+Z) in a sketcher session

Creo



Pro|DESKTOP



why change to...

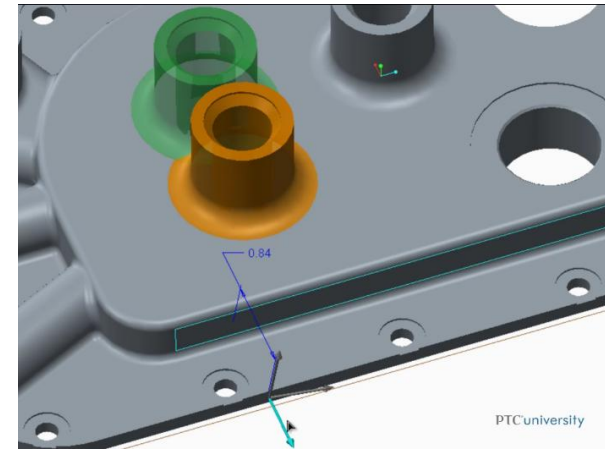
Flexible modeling

- Flexible modeling tools to manipulate existing geometry
- Make quick edits to parametric models.
- Capture features from CAD models imported from other 3D modellers and from scanned data.

Freestyle modeling

- Freestyle sub division modeling tools with easy to use co-pilot.
- Create organic shapes with ease.
- Easily combine freestyle, direct and parametric features with the common data model.

Creo



Pro|DESKTOP



why change to...

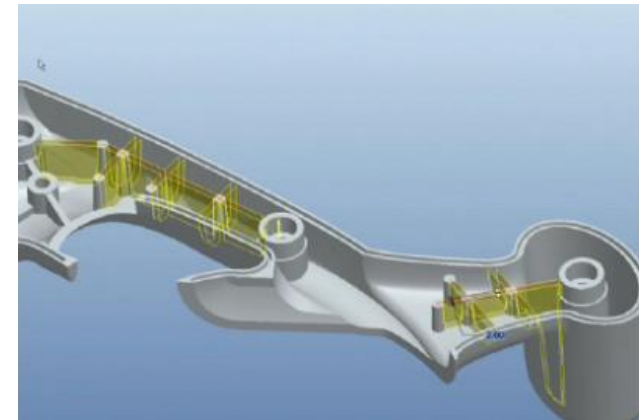
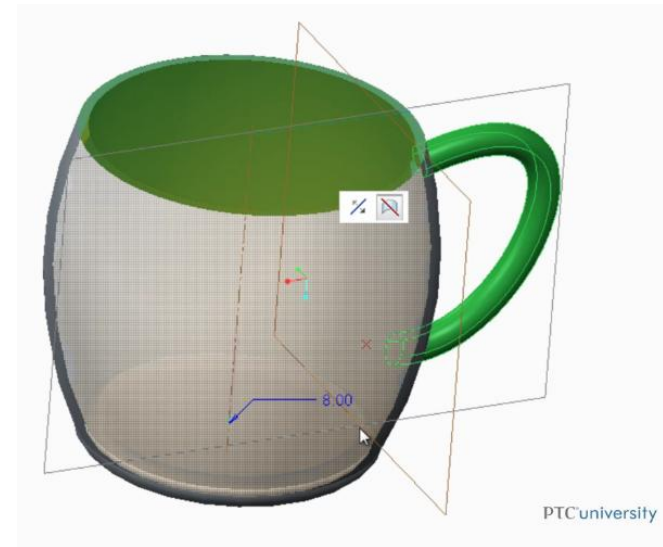
Direct modeling

- Fast and easy direct modeling.
- Geometry is king.
- Seamlessly switch between direct, parametric and freestyle modeling with the common data model.

Dynamic feature edit

- Drag handles allow features to be edited with real time regeneration of the model

Creo



Pro|DESKTOP



why change to...

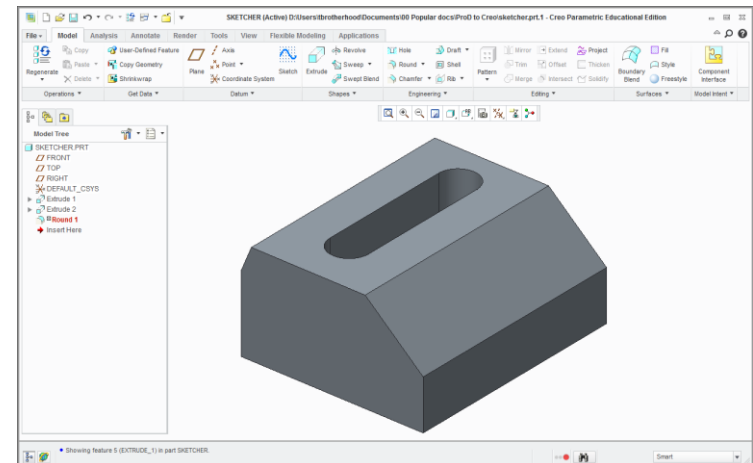
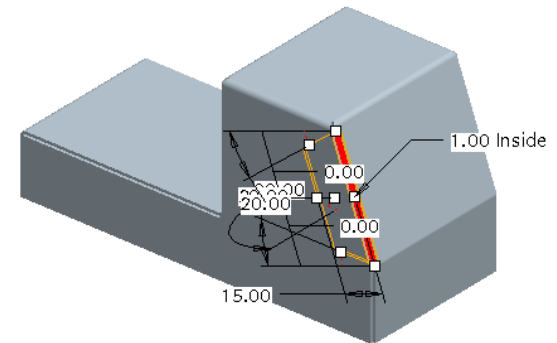
Cut and paste features

- Features can be quickly cut and paste into new locations for rapid generation for repeated geometry

Failure resolution

- Deal with failures now or later
- Models can be saved with failed features
- Failed feature are not regenerated as well as child of failed feature.
- “Failed” Geometry is shown when possible

Creo



Pro|DESKTOP



why change to...

Warp

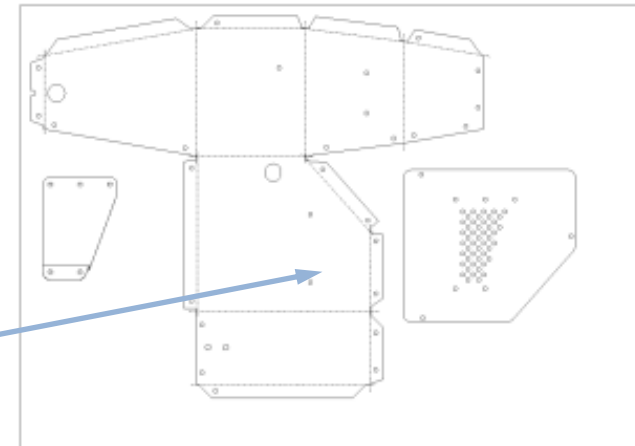
- Stretch, bend, twist, sculpt, etc
- Easy creation of organic shapes for product design.

Sheet metal

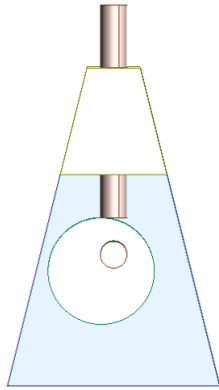
- Tools for creating metal, card, acrylic and structures for graphics, point of sale etc.



Creo



Pro|DESKTOP



why change to...

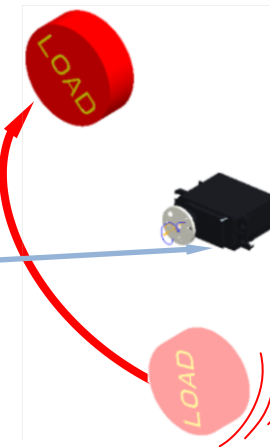
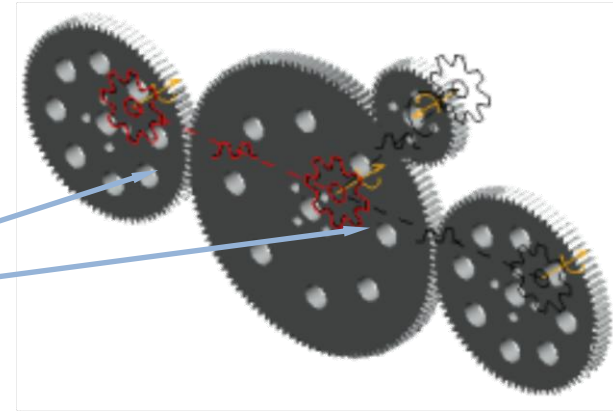
Mechanism assembly

- Pin joints
- Slider joints (not shown)
- Ball joints (not shown)
- Cams (not shown)
- Gears
- Belts (not shown)
- All points of contact

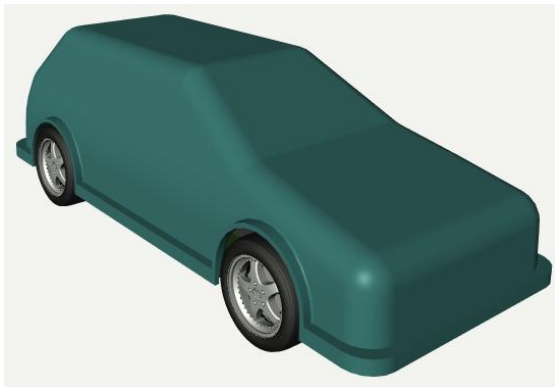
Mechanism dynamics

- Servo motors (not shown)
- Force motors
- Gravity
- Friction (not shown)
- Coefficient of restitution (not shown)

Creo



Pro|DESKTOP



why change to...

Creo Simulate

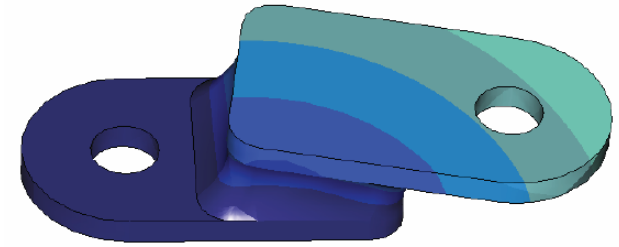
Finite Element Analysis (FEA)
available in the Education Editions.

- Structural
- Thermal
- Resonance
- Non linear elasticity
- Plastic part design
- Elastomers

Photo realistic render

- Real time render
- Render integrated into modelling window
- Truly photo-realistic render
- Shadows, reflections
- Apply your own textures
- Create and apply decals
- HDRI backgrounds

Creo



Pro|DESKTOP



why change to...

3D Drawings

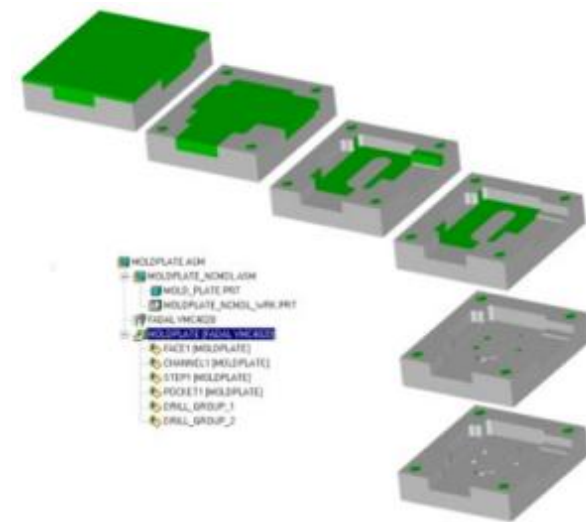
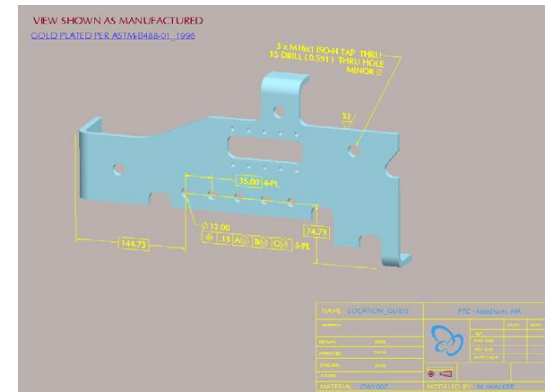
- Driving dimension annotations
- Annotations in design features
- Hole notes, weld symbols
- More flexible annotation planes

NC machining

- Setup machine, material, tooling, retract, fixture
- Machining features: Pocket, step, face, slot, channel, through pocket, holes, etc.
- Tool paths
- Simulate checks for collisions
- Output to Fanuc file format

Note: Creo also supports STL output.

Creo



Pro|DESKTOP



why change to...

Robust and reliable

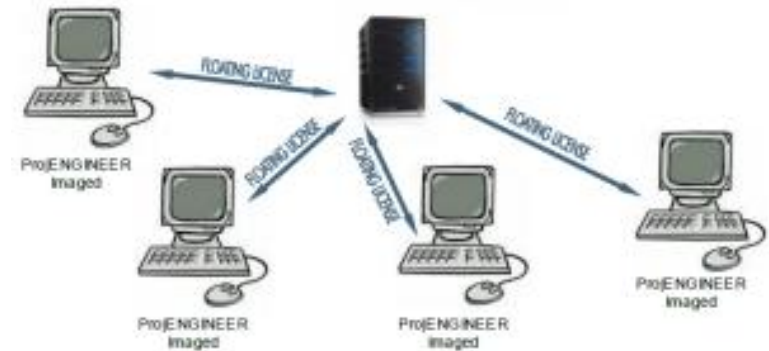
- Engineers in the largest manufacturing companies in the world rely on Creo Elements/Pro to create robust models at the heart of product development.
- Seamless integration with PTC's Product Lifecycle Management (PLM) software ensures designers always access the most up to date geometry.

Network install

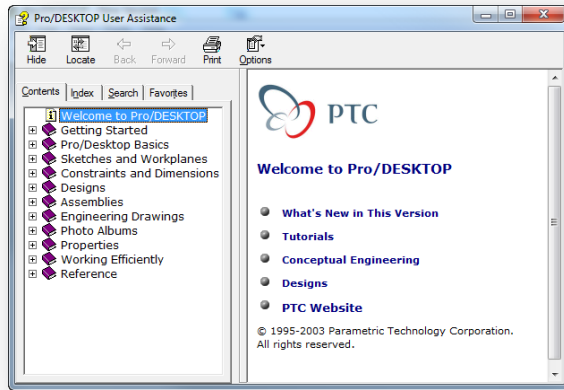
License server potion has 150 floating seats

- Creo installation can be cloned around the network.
- Streamlines licensing, installation and maintenance for busy IT support staff.
- Standalone option for teacher and pupil offline or at home.

Creo



Pro|DESKTOP



why change to...

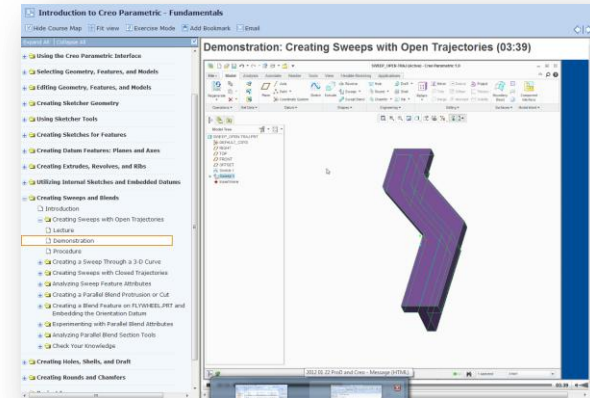
FREE PTC curriculum

- 200+ hours of middle and high school projects with pupil tutorials, outline planning, schemes of work and detailed lesson plans.
- Product design
- Engineering
- Science
- Maths

FREE software tutorials

- FREE access to middle and high schools
- Precision LMS on-line delivery
- Teachers and pupils
- Over 400 hours of tutorials
- Introductory notes
- Narrated screen videos
- Text option

Creo



Ready to sign up for Creo?

Go to www.ptcschools.com or email: schools@ptc.com stating you would like to use Creo in your school with your school name, full address and country.