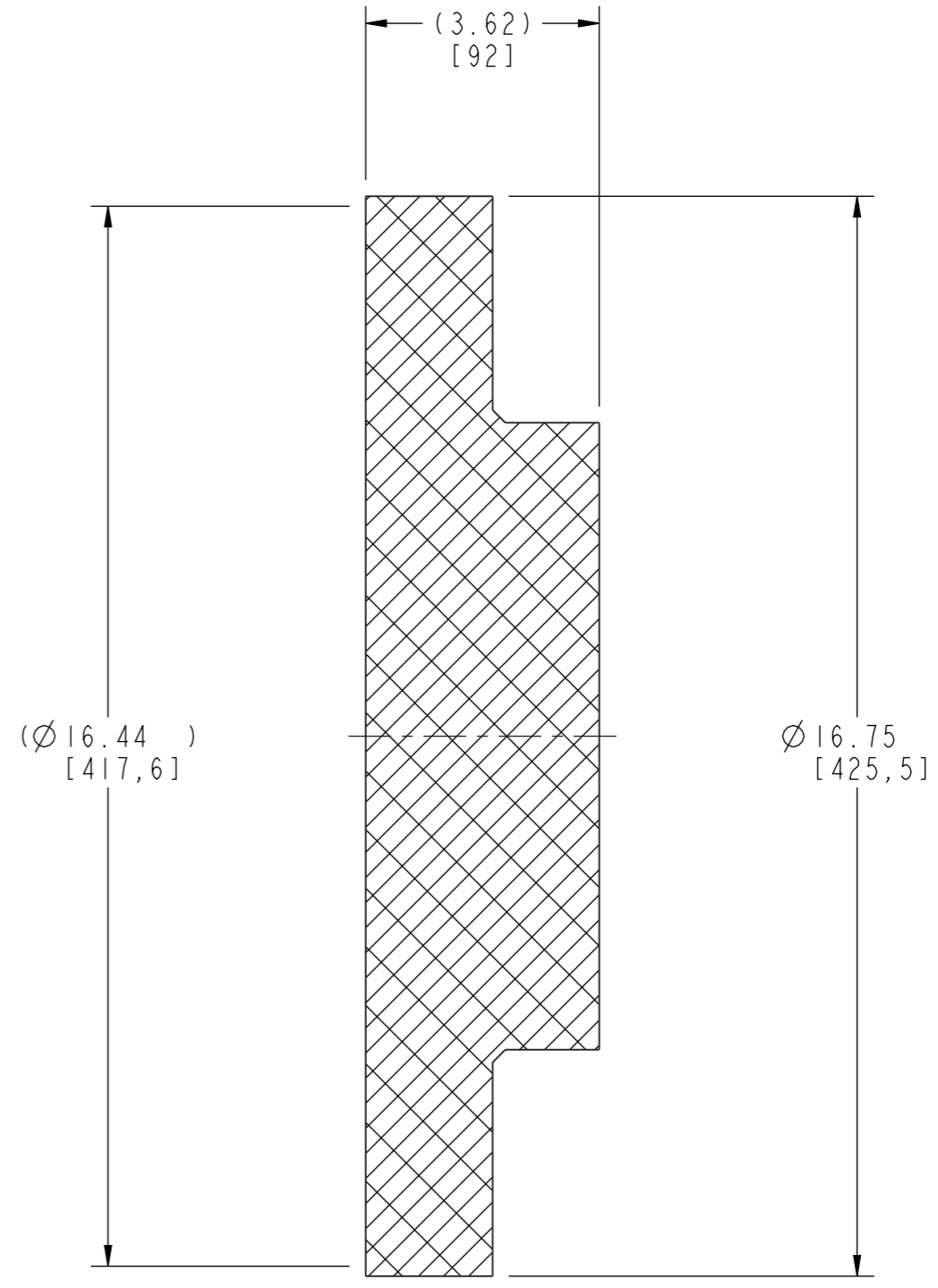
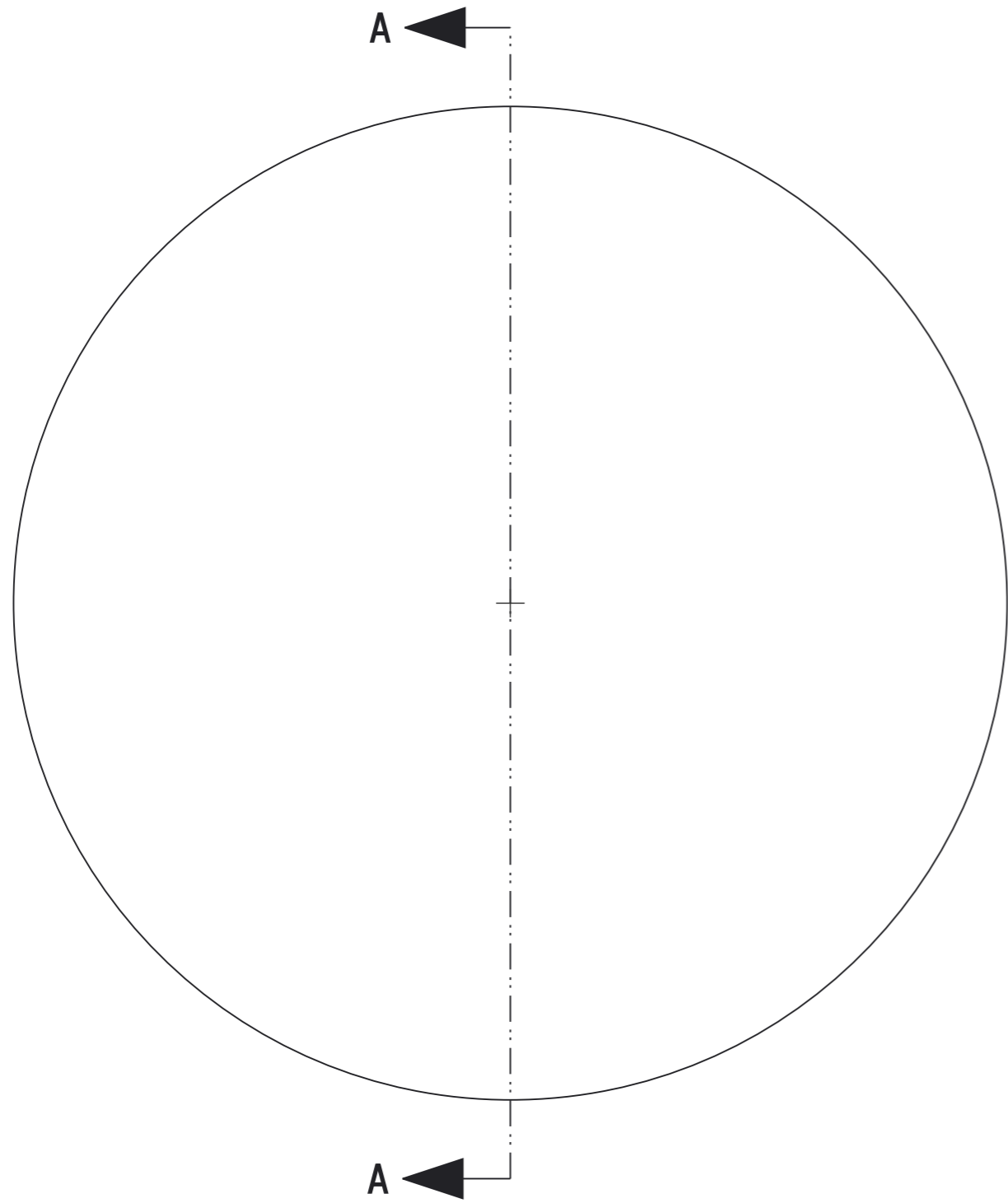




Basic Attributes	Number	Name	UOM	Version
	02465318	Plate, example	each	A.7
Primary Legacy Number	2465318	State	Released	
Secondary Legacy Number		Is Prime	Not Set	
Type	Component	Source	Make	
Original Submitter	Buckelew, Ashley E 2015-09-18 09:17:10 CDT	Latest Submitter		
Original Checker	ptcloud 2015-09-21 09:07:35 CDT	Latest Checker		
Original Promoter	ptcloud 2015-09-21 09:08:04 CDT	Latest Promoter		
Described By	Document Number		Version	
	C005076907 (Drawing)		A.3	
	C005076908 (Model)		A.5	
ECN is Changing/Changed This Version	298820 (Release Assembly)			
Classification	Weatherford/Cementing/Components and subassemblies/Plug parts			
Attribute	Value	Attribute	Value	
BODY DIAMETER	0. in	CASING SIZE FRACTIONAL	20	
COATING SPECIFICATION	WC010	COATING SPECIFICATION SUPPLEMENTS	S1	
COMMON MATERIAL NAME	aluminum	GENERIC DESCRIPTION	Bottom Plug	
LONG DESCRIPTION	Plate, landing	MATERIAL	phenolic	
MATERIAL SPECIFICATION	NM600	MATERIAL SPECIFICATION SUPPLEMENTS	S1	

PDF Created: 2015-09-21 09:23:01 CDT		© Weatherford 2015 All rights reserved This document is copyrighted and whether containing patentable or non-patentable subject matter is and comprises the proprietary and confidential information of Weatherford International Ltd. and by receiving this document the recipient agrees that this document is loaned in confidence with the understanding that neither it nor the information in it will be reproduced or disclosed, in whole or in part for any purpose except the limited purpose for which it is loaned. This document and any facsimiles hereof shall be returned to Weatherford International Ltd. upon demand. PDM SYSTEM INFORMATION FOR PART 02465318 Plate, example
---	--	--



SECTION A-A

SHEET : 1 OF 1			<small>© Weatherford 2015. All rights reserved. This document is copyrighted and whether containing patentable or non-patentable subject matter is and comprises the proprietary and confidential information of Weatherford International Ltd, and by receiving this document the recipient agrees that this document is loaned in confidence with the understanding that neither it nor the information in it will be reproduced or disclosed, in whole or in part for any purpose except the limited purpose for which it is loaned. This document and any facsimiles hereof shall be returned to Weatherford International Ltd upon demand.</small>	
SIZE : A3				
SCALE : 0.38				
WEIGHT: 557.2				
NAME Plate, example				
MODEL FILE	MODEL VERSION	3RD ANGLE 	DRAWING FILE	DRAWING VERSION
C005076908	A .5		C005076907	A .3