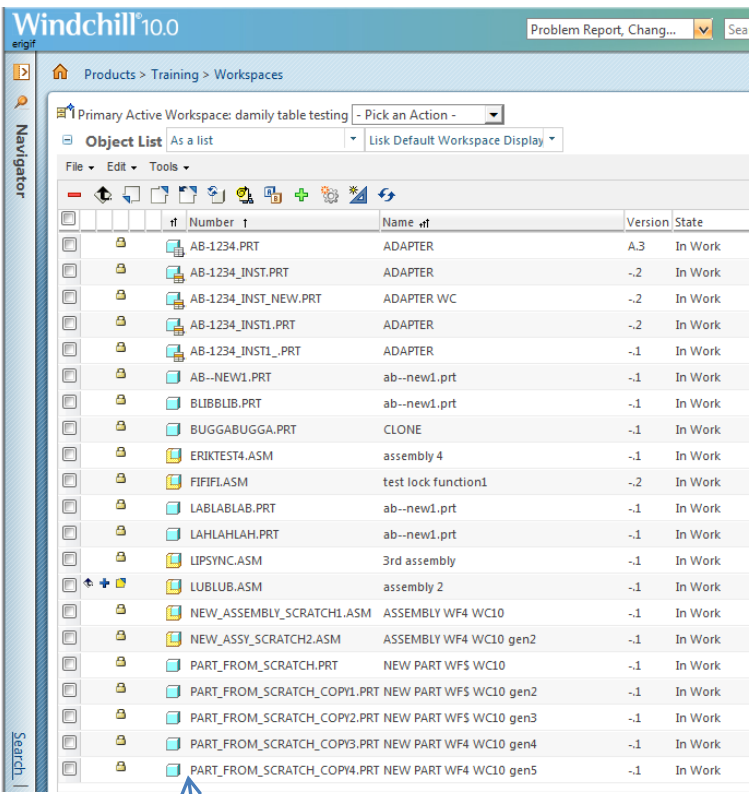
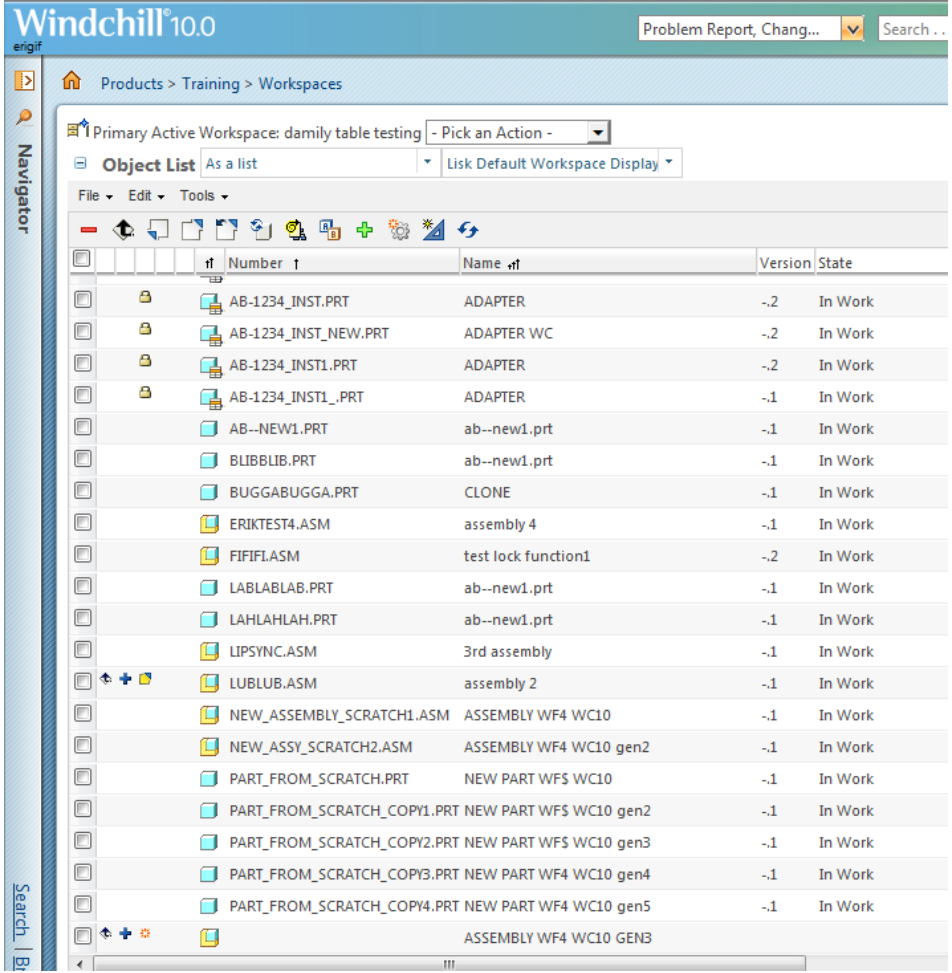


Same thing will happen if the new part is put into an assembly and the assembly is saved.....



Newly created file is checked in and locked



Created new assembly, added “gen 5” part as only component. Save the assembly – multiple files unlocked again.

Did this both with and without refreshing display & syncing with every step to determine where the “unlock” occurs. User that brought this to my attention indicates it is happening to him with older data that did exist in Intralink and was migrated to Windchill (examples above where locks are turning off are all new data).