

Home (/support) > Support (/support)

This is a PDF version of Article CS211407 and may be out of date. For the latest version click [here](https://www.ptc.com/en/support/article?n=CS211407&source=Case Viewer) (<https://www.ptc.com/en/support/article?n=CS211407&source=Case Viewer>)

Article - CS211407

In Windchill PDMLink 10.2 M030 and later, the Component Name attribute from a SolidWorks assembly is automatically mapped to the Windchill Reference Designator field

Created: 25-Jun-2015 | Modified: 15-Sep-2017 | Last Seen: 27-Jun-2019

Was this information helpful?

Yes

No

Applies To

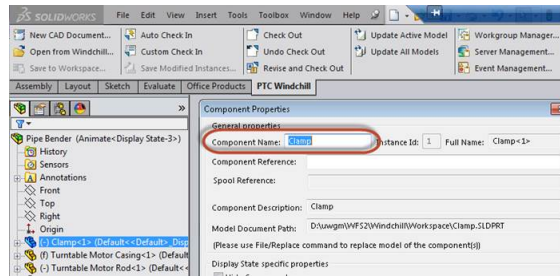
- Windchill PDM Essentials 10.2 M030 to M030-CPS05
- Windchill ProjectLink 10.2 M030 to M030-CPS05
- Pro/INTRALINK 8.x + 10.2 M030 to M030-CPS05
- Windchill PDMLink 10.2 M030 to M030-CPS05
- Windchill Workgroup Manager
- SolidWorks

Description

- Reference Designator fields are populated with EPM document names for checked in SolidWorks assemblies and in WTPart BOM Structure, the Reference Designator is populated with EPM document names for checked in SolidWorks assemblies
- The following **automatic mapping** from **SolidWorks assembly Component Name to WTPart occurrence Reference Designator** is observed and if the Reference Designator field is

used for other purposes, this mapping could be unnecessary or problematic:

- In SolidWorks, the **Component Name** attribute is automatically populated for CAD documents

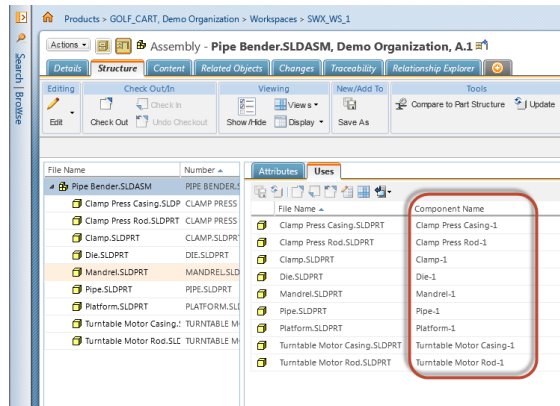


Was this information helpful?

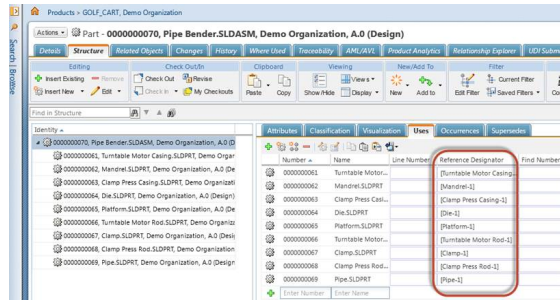
Yes

No

- When the assembly is checked in to Windchill, the **Component Name** appears for each Windchill CAD document



- If this CAD assembly is associated with WTParts, the **Component Name** value is automatically mapped to the **Reference Designator** value for the occurrence of each **WTPart** in the assembly



Cause

- Change in product specification with Windchill PDMLink 10.2 M030 as introduced as part of a

new feature implementation for SolidWorks data management

Resolution

- Reported to R&D as SPR 4549686
- Corrected in Windchill PDMLink 10.2 M030 CPS06
- A new, hidden Windchill Workgroup Manager client preference is available (can be added) in the [SolidWorks] section of **wgmclient.ini**:
 - The preference is wgmclient.ini file:
set.component.name
 - Preference values are:
 - **Yes** (default) - The SolidWorks **Component Name** value is **automatically mapped to the Component Name** for each Windchill CAD document and the **Reference Designator** value for each occurrence of the WTPart in the assembly
 - **No** – The **Component Name** for each Windchill CAD document **and Reference Designator value** for each occurrence of the WTPart in the assembly **are left blank**

Was this information helpful?

Yes

No

[Legal Policy \(/documents/policies\)](#)