



Document - CS298128

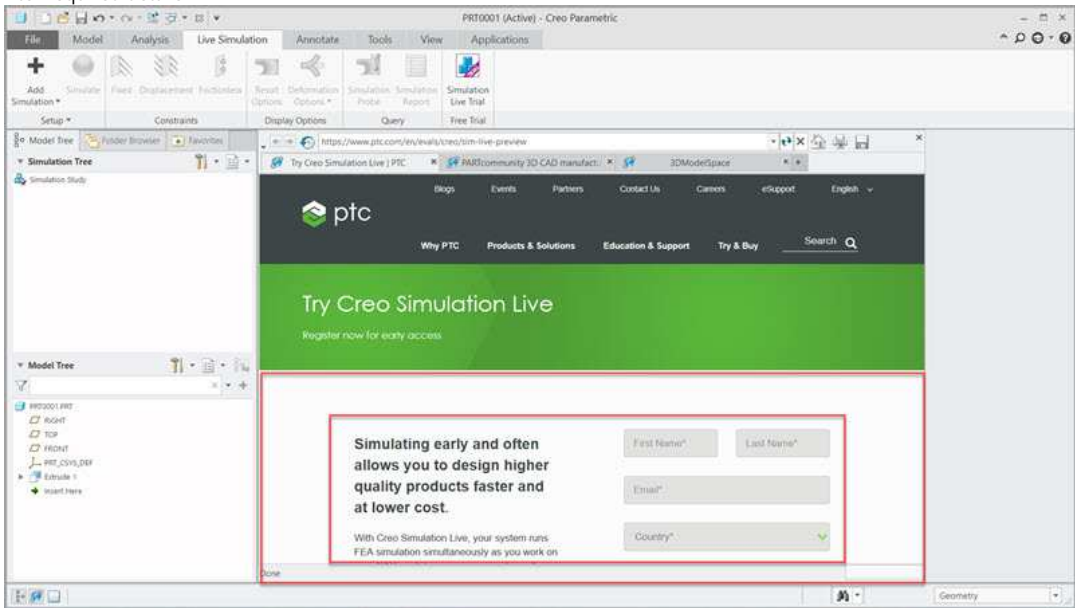
Document Information

Type	Article
Date Created	14-Dec-2018
Date Last Updated	20-Dec-2018

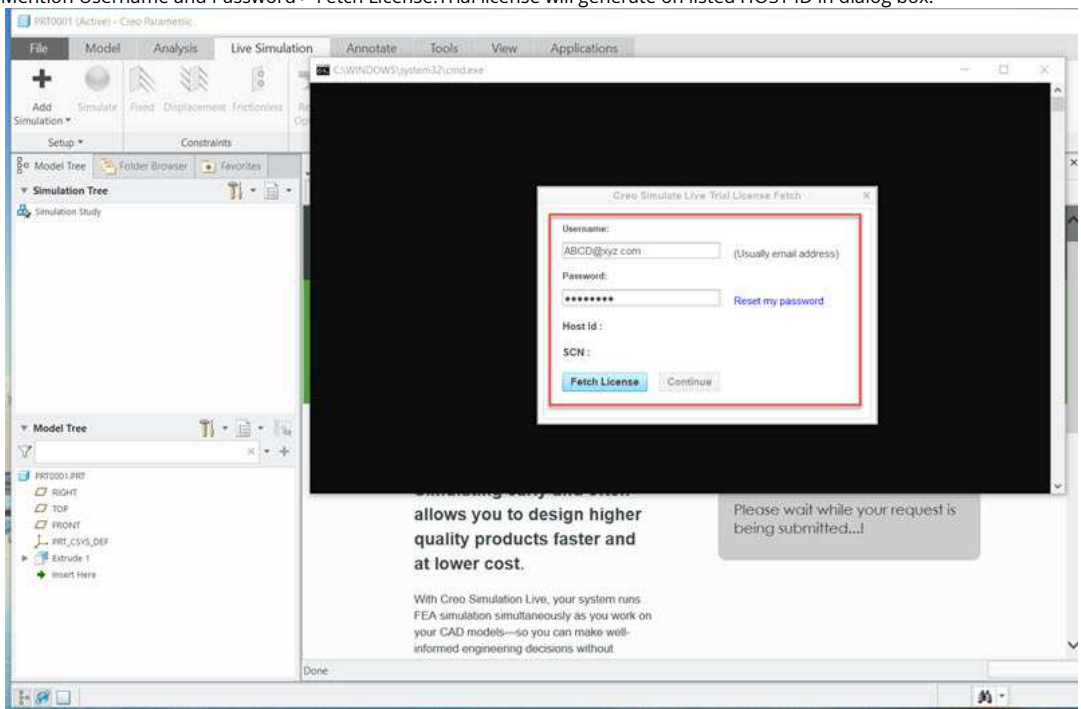
Document Details

Title	How to get Creo Simulation Live Trial License.
Description	<ul style="list-style-type: none"> • How to request Creo Simulation Live Trial License. • Steps to place trial license request.
Applies To	<ul style="list-style-type: none"> • Creo Simulate 5.0 • Creo Parametric 5.0 • Creo Simulation Live
Cause	<ul style="list-style-type: none"> • Install Creo 5.0.3.0 or later to request Creo Simulation Live Trial License
Resolution	<ol style="list-style-type: none"> 1. Launch Creo Parametric 5.0.3.0 or later 2. Create/Open a part or assembly 3. Activate Live Simulation Tab <div data-bbox="343 1055 1157 1265" data-label="Image"> </div> 4. Select Simulation Live Trial <div data-bbox="343 1319 1157 1529" data-label="Image"> </div>

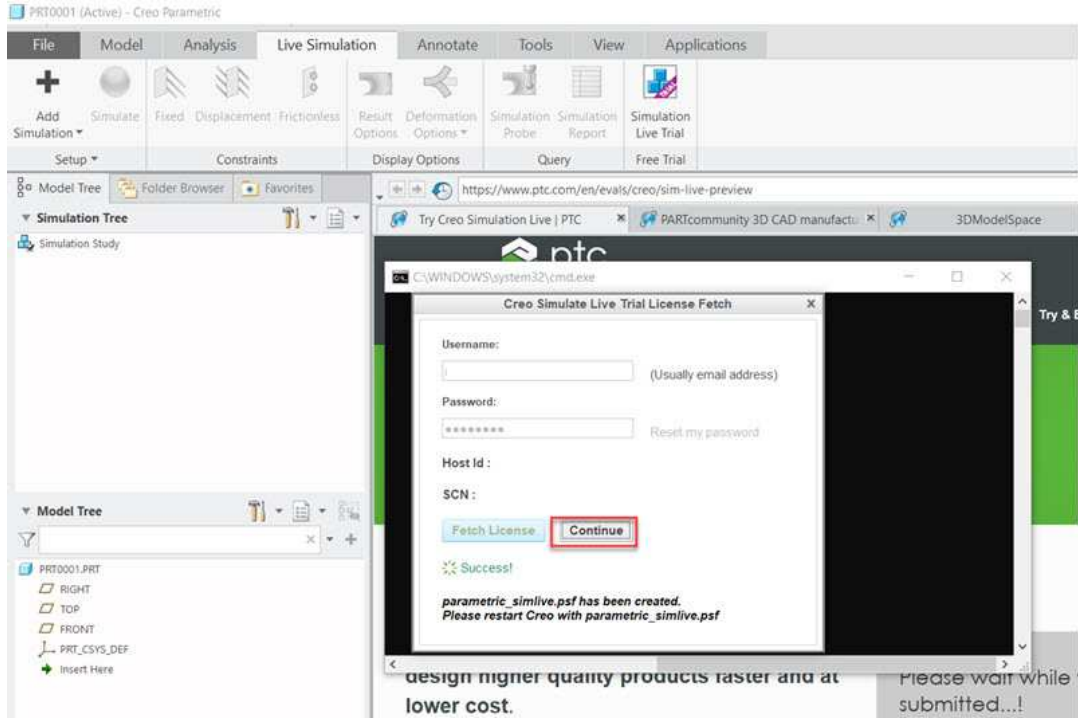
5. Enter required details



6. Mention Username and Password > Fetch License. Trial license will generate on listed HOST ID in dialog box.



7. Wait for message about Successful configuration and parametric_simlive.psf creation.



- 8. Trial license for Creo Simulation Live will save under "C:\ProgramData\PTC\Licensing" and Creo Parametric 5.0 will create a new startup for SimLive trial
- 9. Close existing session and Start a new session with startup command for SimLive to see active commands for Live Simulation.

Note: Above Steps are to configure Creo Parametric automatically with trial license for Simulate Live. If the automatic process is unable to configure trial license file, an email with license and steps will sent at specified email address.

SPR Information

Related Documents

Type	Number	Status	Description
------	--------	--------	-------------