

4

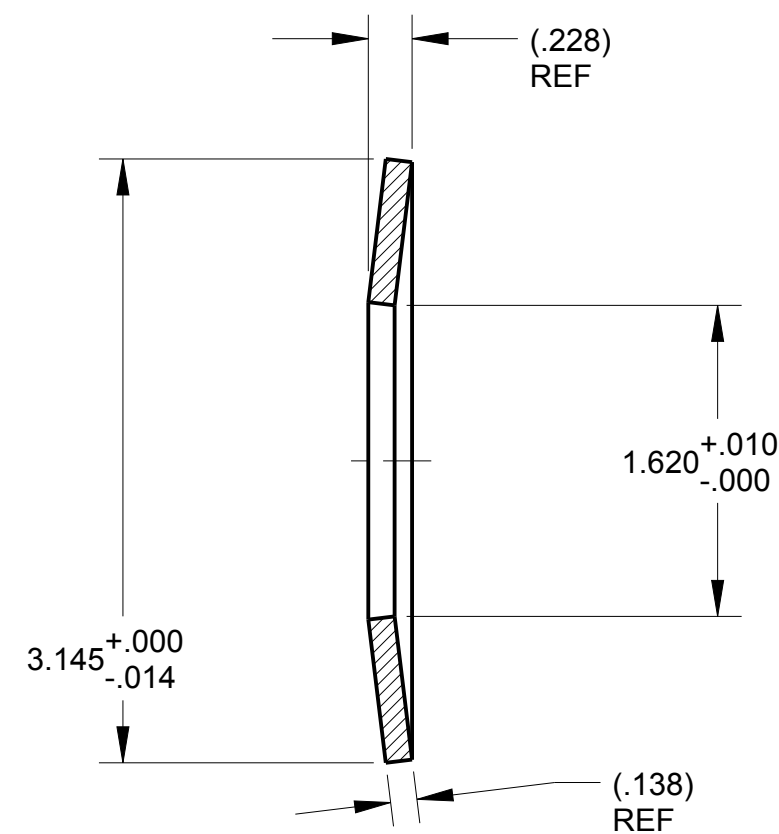
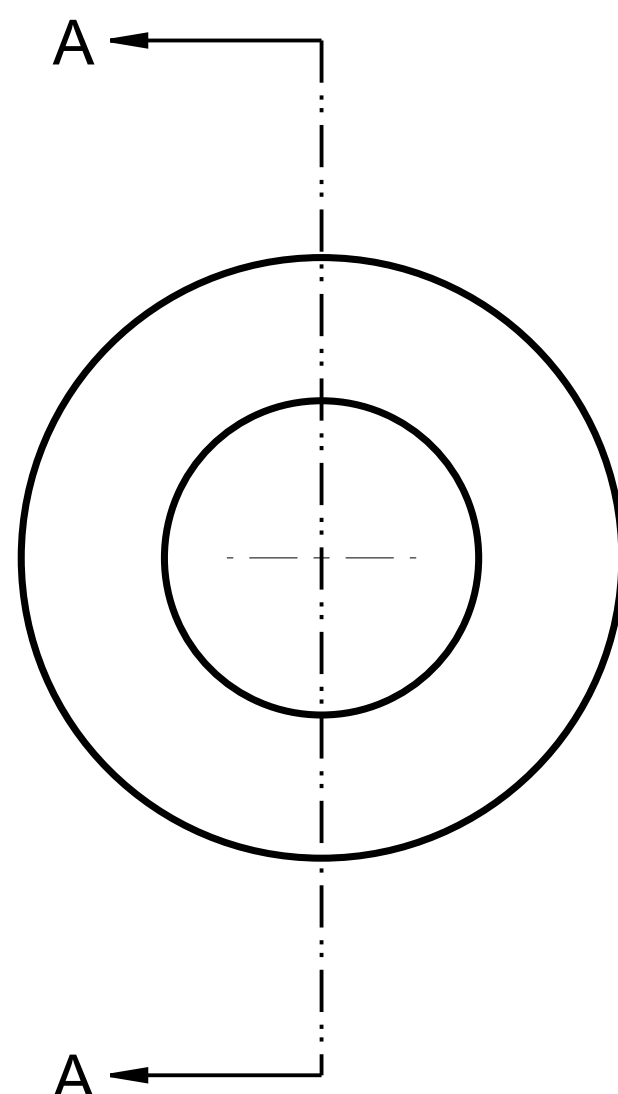
3

2

1

REVISION					
LTR	ECN NO	DESCRIPTION	DATE	DFT	CHK
-		PROTOTYPES	11/5/10	MLJ	

THIS DOCUMENT IS THE PROPERTY OF CARLISLE CORPORATION. IT CONTAINS PROPRIETARY INFORMATION AND IS TENDERED SUBJECT TO THE CONDITION THAT (A) IT AND THE INFORMATION DISCLOSED HEREIN BE RETAINED IN CONFIDENCE, (B) IT NOT BE REPRODUCED OR COPIED DIRECTLY OR INDIRECTLY IN WHOLE OR IN PART, AND (C) IT AND THE INFORMATION DISCLOSED HEREIN SHALL NOT BE USED OR DISCLOSED TO OTHERS FOR USE FOR ANY PURPOSES EXCEPT AS SPECIFICALLY AUTHORIZED IN WRITING CARLISLE CORPORATION.



SECTION A-A

4. SPRING LOAD MUST BE NO HIGHER THAN 4141 LBS (18420 N) AND NO LOWER THAN 2650 LBS (11788 N) BETWEEN A HEIGHT OF .1640" (4,17 MM) TO .1840" (4,67 MM) AND MUST PASS A 500,000 CYCLE TEST WITH .1840" TO .1640" AND BACK TO .1840" BEING ONE CYCLE.

3. SURFACE TREAT PER E.S. 6.100

2. HEAT TREATED, PRE-STRESSED

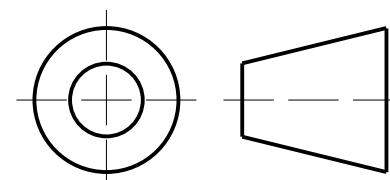
1. MATERIAL: 6150 CHROME VANADIUM OR 50 Cr V4 GRADE STEEL

GENERAL NOTES:

THIS DRAWING IS BASED ON ASME Y14.5M-1994 STANDARDS

UNLESS OTHERWISE SPECIFIED  
 DIMENSIONS ARE IN INCHES  
 TOLERANCES:  
 TOL FOR 3 PLC. DECIMALS ± 0.01  
 TOL FOR 2 PLC. DECIMALS ± 0.03  
 TOL FOR ANGULAR DIMS ± 0.5 °  
 SURFACE FINISH TO BE 125 Ra  
 DO NOT SCALE THIS DRAWING

THIRD ANGLE PROJECTION



DRAWN BY: M. JOHNSON 11/10

ENGINEERING:

MANUFACTURING:

PURCHASING:

QUALITY:

DEPT APPROVAL BY: DATE:

RAW MATERIAL:

SEE GENERAL NOTES



Bloomington, IN 47401-6586 U.S.A

NAME: **SPRING-DISC**

SIZE	CODE IDENT NO.	PART NO.	REV.
C	60250	X40-8048	-

SCALE: 1.000	WT: .32 LBS	SHEET 1 OF 1
--------------	-------------	--------------