



St. Louis Pro/Engineer User Group

PDF Creation Using Ghostscript, FreeDist and Pro/Batch

Presented by

Tony Troglio, Engineer/CAD Admin
Sunnen Products Company

December 3, 2003



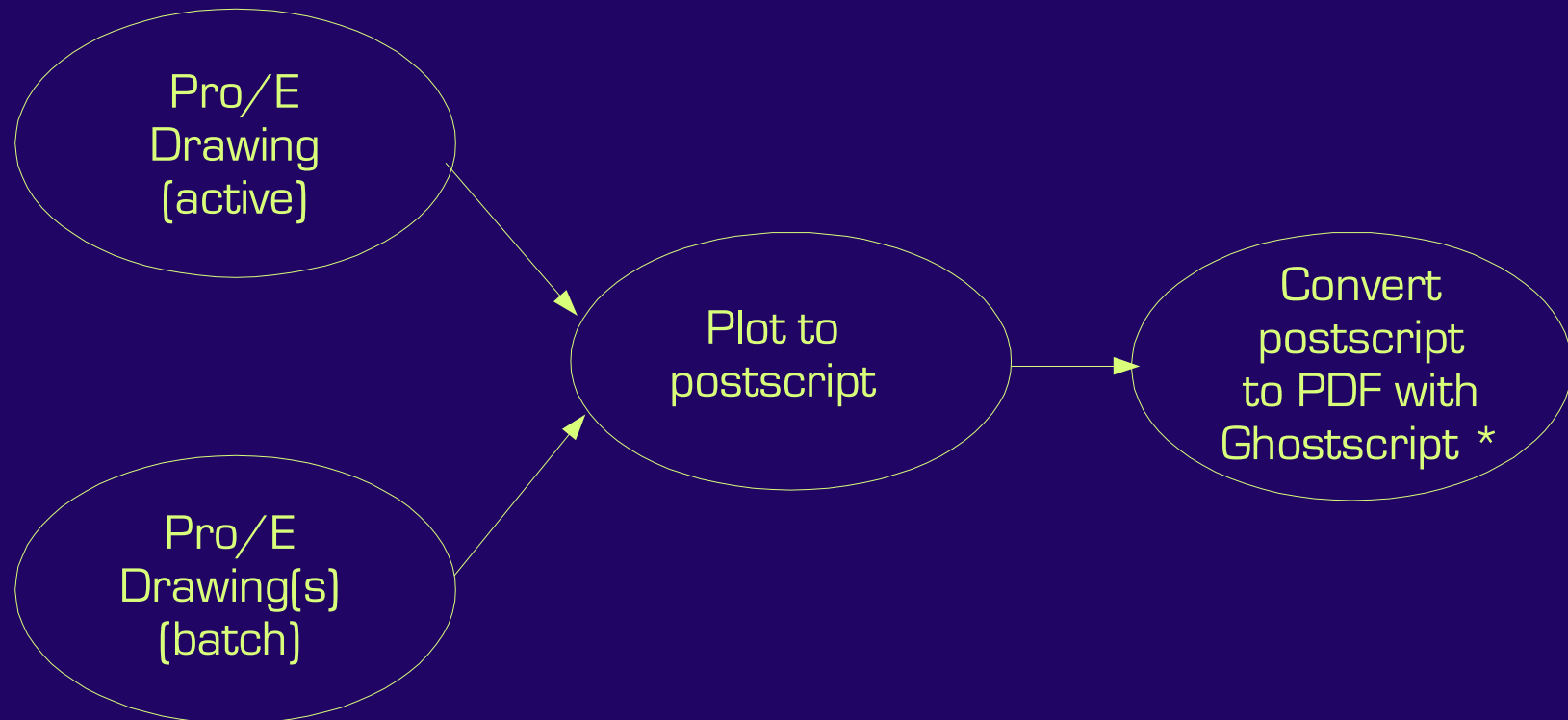
Purpose

- Provide a no cost solution for the creation of PDF files from Pro/Engineer drawings
- Replicate functionality of Adobe Acrobat
- Automate the creation of PDF files using Pro/Batch

No Cost Software Components

- AFPL Ghostscript 8.11 
<http://www.cs.wisc.edu/~ghost/doc/AFPL/index.htm>
- FreeDist 1.10
<http://home.hccnet.nl/s.vd.palen/index.html>
- Acrobat Reader 6.0 
<http://www.adobe.com/products/acrobat/readstep2.html>

Process Overview



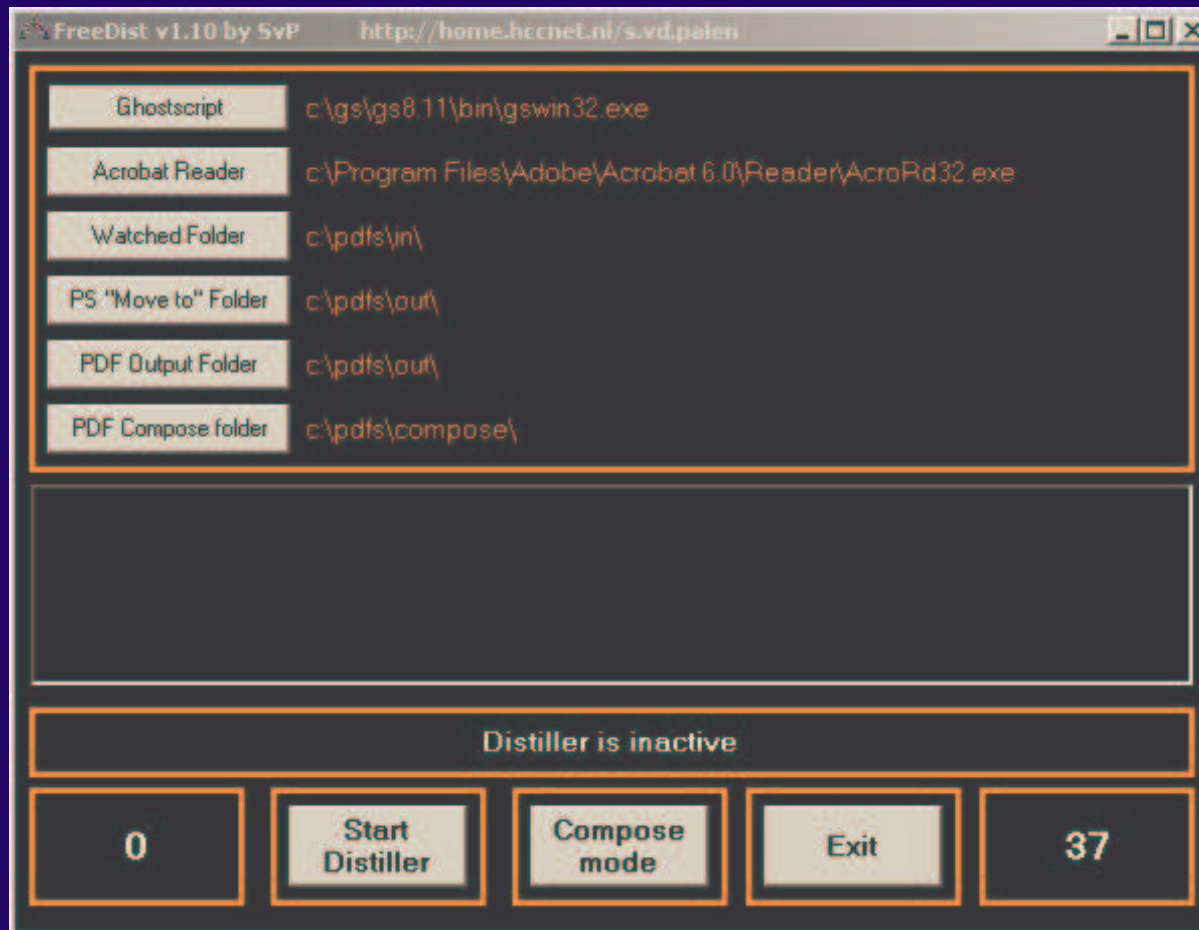
* FreeDist provides the front end for Ghostscript. This simulates Acrobat Distiller “watched folder” functionality.



Installation Details

- Create system directories
 - c:\pdfs\
 - c:\pdfs\in
 - c:\pdfs\out
 - c:\pdfs\compose
 - c:\freedist
- Install Ghostscript using default options
- Place FreeDist in c:\freedist directory. Create desktop shortcut if desired.

Configure FreeDist





Configure FreeDist

<u>Program</u>	<u>Program Path</u>
Ghostscript	c:\gs\gs8.11\bin\gswin32.exe
Acrobat Reader	c:\Program Files\Adobe\Acrobat 6.0 \Reader\AcroRd32.exe
Watched Folder	c:\pdfs\in
PS "Move to" Folder	c:\pdfs\out
PDF Output Folder	c:\pdfs\out
PDF Compose Folder	c:\pdfs\compose

Create Plotter Configuration File

To obtain the correct output in the postscript file, you must create a text-based plotter configuration file for use in Pro/E and Pro/Batch.

pdf_win.pcf

button_name	pdf_win
button_help	Create Postscript file for Ghostscript
plotter	postscript
paper_size	a b c d e
plot_sheets	all
plot_destination	file
pen_table_file	<drive>:\<path>\table_pdf.pnt

Set the following config.pro options:

```
pro_plot_config_dir <drive>:\<path to .pcf file>
plot file dir c:\pdfs\in
```


Create Pen Mapping File

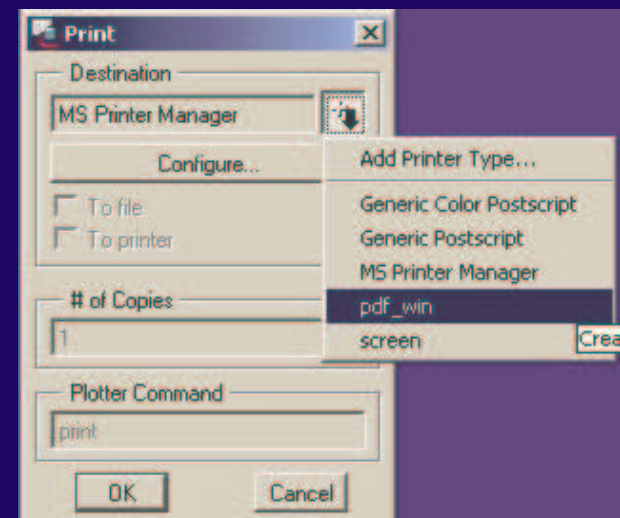
A pen mapping file is a text-based file that defines the line width in the output file based on the entity color in Pro/E.

table_pdf.pnt

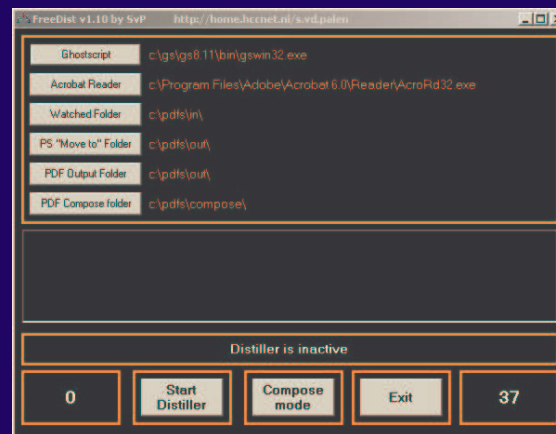
```
pen 1 thickness 0.015 cm;color 0.0 0.0 0.0;letter_color  
pen 2 thickness 0.020 cm;color 0.0 0.0 0.0;drawing_color  
pen 3 thickness 0.015 cm;color 0.0 0.0 0.0;dimmed_color  
pen 4 thickness 0.020 cm;color 0.0 0.0 0.0;magenta_color  
pen 5 thickness 0.020 cm;color 0.0 0.0 0.0;brown_color  
pen 6 thickness 0.015 cm;color 0.0 0.0 0.0;hilite_color  
pen 7 thickness 0.015 cm;color 0.0 0.0 0.0;half_tone_color  
pen 8 thickness 0.020 cm;color 0.0 0.0 0.0;cyan  
pen 9 thickness 0.200 cm;color 0.0 0.0 0.0;blue  
pen 10 thickness 0.025 cm;color 0.0 0.0 0.0;attention_color
```

PDF from active Pro/E drawing

- Start FreeDist program and distiller process
- Retrieve drawing into Pro/E session
- Print to pdf_win printer option →
- Postscript placed in FreeDist watched folder
- Distiller starts Ghostscript to create PDF
- PDF and postscript moved to FreeDist output folder
- Review PDF with Acrobat Reader
- Repeat for additional drawings



PDF Creation Demonstration





St. Louis Pro/Engineer User Group

Converting one Pro/E drawing to PDF seems easy

but,

What if we wanted to convert 50 drawings?



Pro/Batch Information

- Pro/Batch is a utility installed with every Pro/E installation
- Can perform 10 separate functions
(plot, stl, set, step, vda, dxf, cadamin, clfile, cgm, vrml)
- Can run unattended and up to 24 hours into the future
- Runs Pro/E without graphics so it is very fast
- Poorly documented by PTC over the years.
- Wildfire introduces Distributed Pro/Batch
http://www.ptc.com/WCMS/files/4566en_file1.pdf



Pro/Batch Configuration

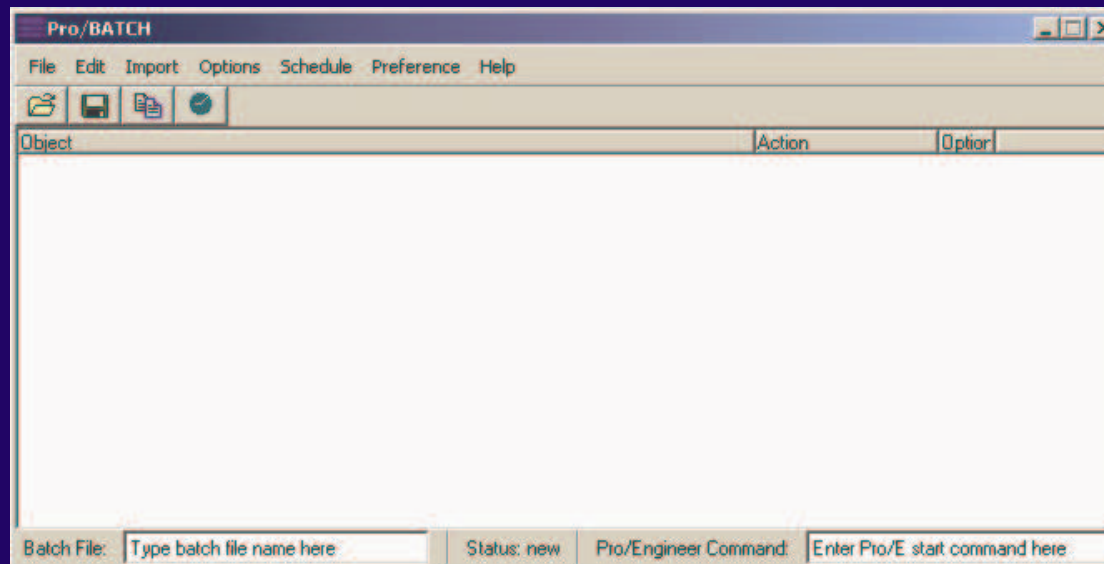
Pro/Batch runs without user interaction, you must make sure the output from Pro/E is going to look correct.

Set the following config.pro options

```
spin_center_display no  
axis_display no  
datum_display no  
datum_point_display no  
display_coordinate_system no
```

PDFs using Pro/Batch

- ➔ Export drawings from Intralink workspace to empty directory.
- ➔ Copy plotter configuration file (.pcf) to user Pro/E startup dir.
- ➔ Start Pro/Batch from DOS shell in user Pro/E startup dir:
c:\<proe loadpoint>\bin\pro_batch.bat

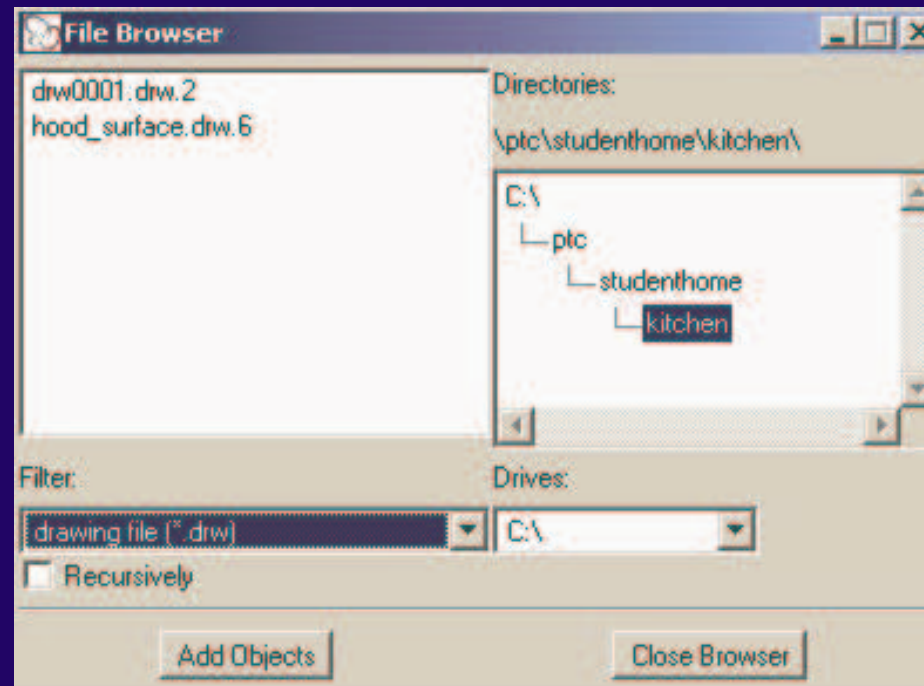


Required

- ➔ Batch file name
- ➔ Pro/E command

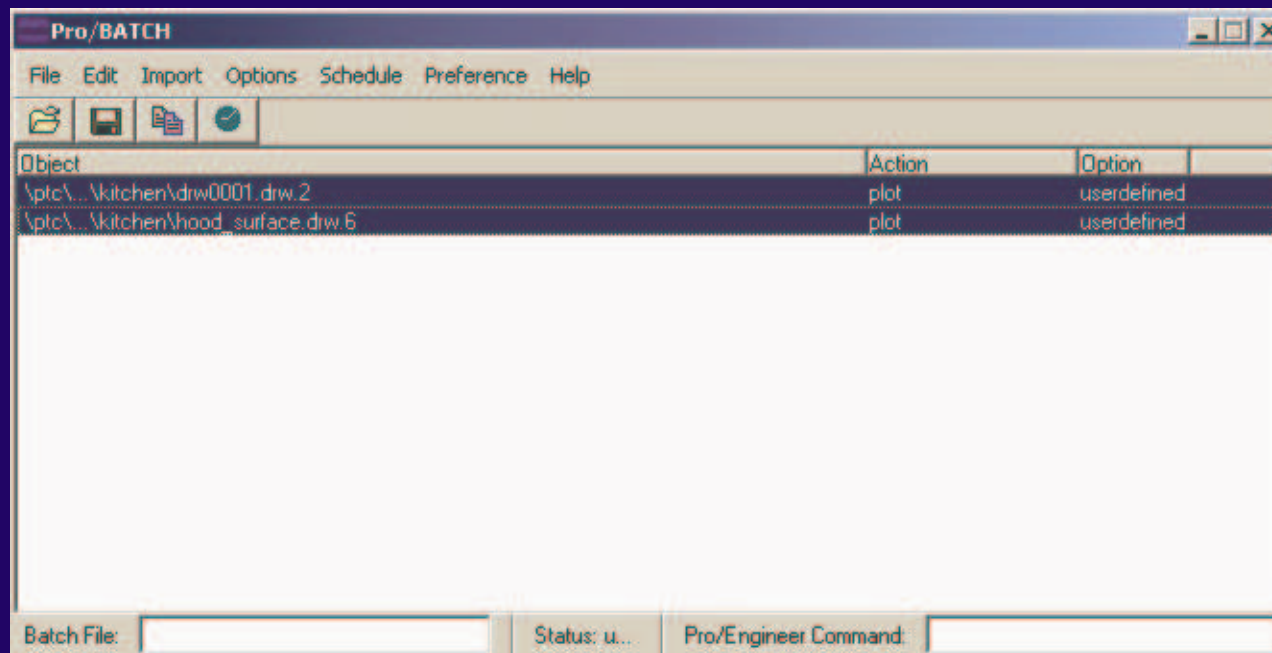
PDFs using Pro/Batch

- ➔ Designate drawings to plot by selecting File, Browse, filter for .drw files. Highlight drawing files and choose Add Objects, Close Browser



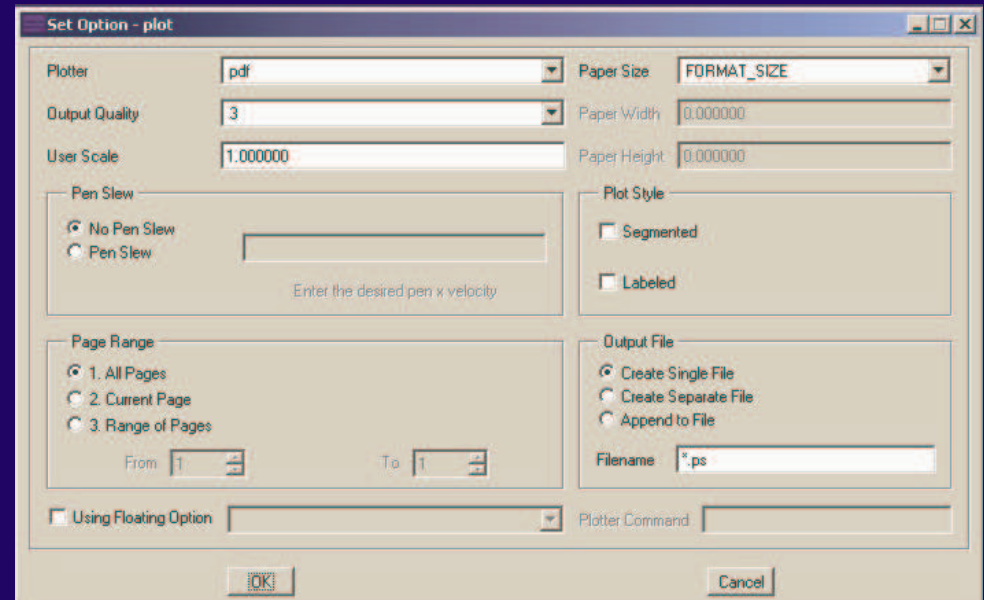
PDFs using Pro/Batch

- Highlight all files listed in Pro/Batch main screen.
- Select Options, Set Option



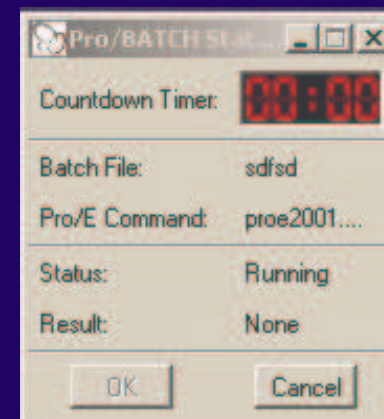
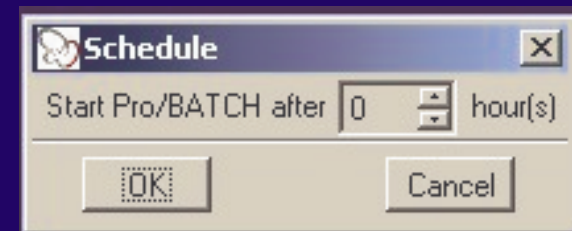
PDFs using Pro/Batch

- Select pdf_win as the Plotter
- Select FORMAT_SIZE as the Format Size
- Set *.ps as the Output Filename, OK
- Save batch file

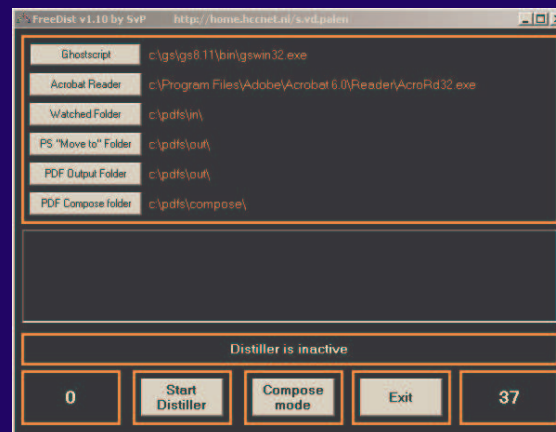


PDFs using Pro/Batch

- Start FreeDist Distiller
- Schedule and start Pro/Batch job
- Check Pro/Batch status
- Check FreeDist output folder



Pro/Batch Demonstration



Additional Information

- See the Fall 2003 online issue of *PROfiles* magazine
<http://www.profilesmagazine.com/p25/tools.html>
- ttroglio@sunnen.com



Questions?

