



[an error occurred while processing this directive]

Suggested Technique for Setting Wire/Cable Color By Spool Parameter

As of Release 2000i2, cable, wire, conductor, and bundle colors may be assigned using the spool parameter "COLOR". If the color name defined in the spool matches the name in the `color.map` file being used, the color is used in the display. The following procedure will outline the necessary steps to achieve this.

Procedure

1. Colors to be used in the spool definition must first be given a name and saved in the `color.map` file.

Select **View > Color & Appearance** to open the APPEARANCE EDITOR dialog box. Then click the '+' sign to add new colors. The color name should be added to the "NAME" field of the APPEARANCE EDITOR, as shown in Figure 1.

In this example, the colors "RED", "GREEN", and "BLUE" will be created. The appearance file must then be stored using **File > Save As** from the APPEARANCE EDITOR dialog box.

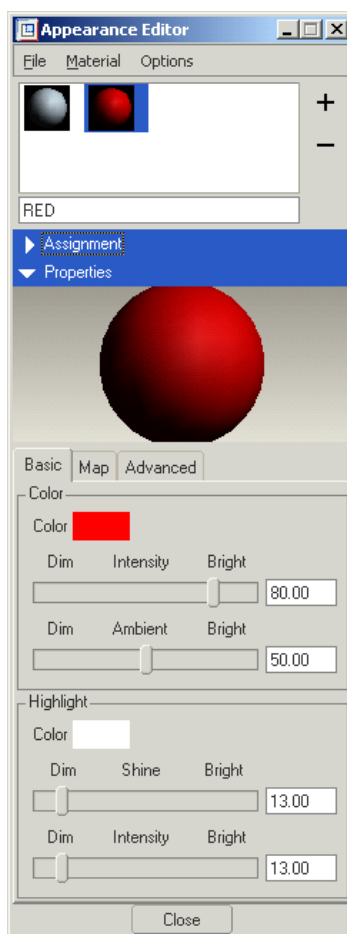


Figure 1

2. Now that "RED", "GREEN", and "BLUE" have been created, these colors can be used in Spool definitions to automatically assign colors to cables, wires, conductors, and bundles.

In this example, colors will be assigned to a cable, and its individual conductors. Click **Spools > Create > Cable** and define a color for the entire cable, as well as for each of the individual cable conductors, as shown in Figure 2.

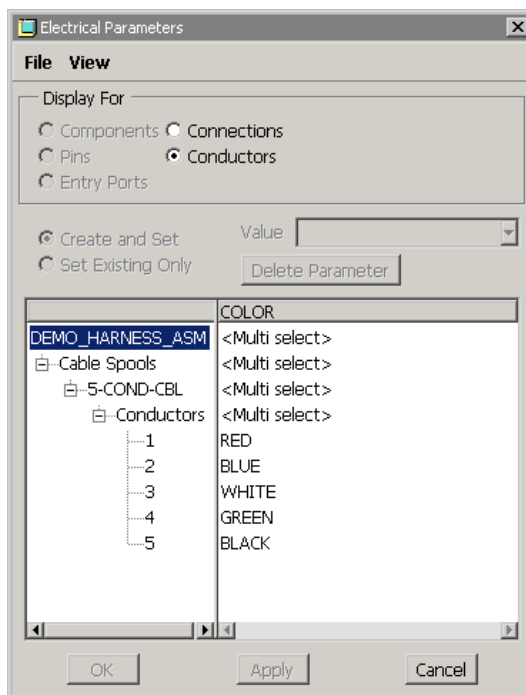


Figure 2

3. Since the colors defined in the spool have been saved in the appearance file, these colors will be used in the display when the cable and its individual conductors are routed, as shown in Figure 3.

The colors assigned by the spool may be overwritten by clicking View > Color & Appearance and manually setting colors to cables from the APPEARANCE EDITOR dialog box.

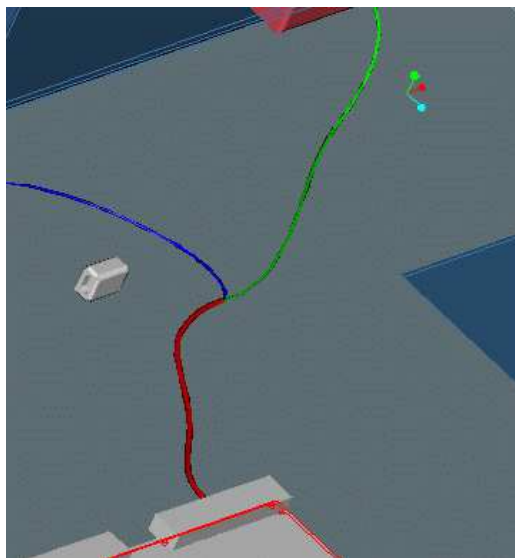


Figure 3

[Social](#)
[Media](#)
[Directory](#)