

6

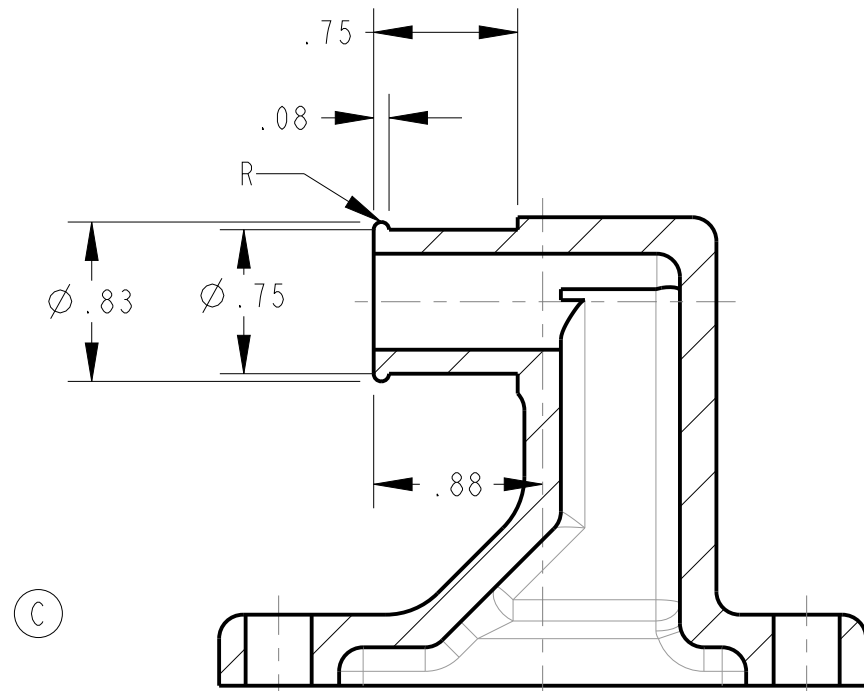
5

4

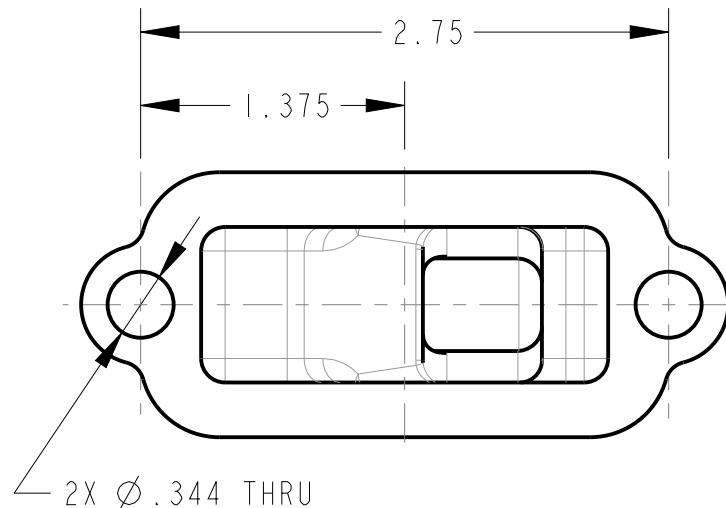
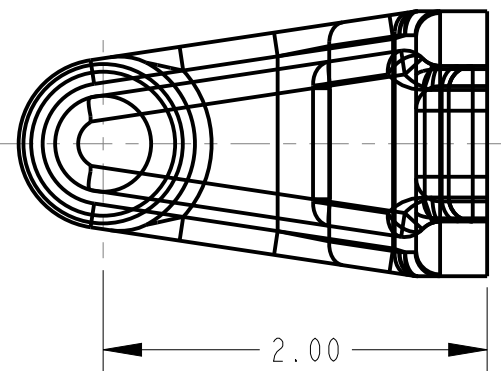
3

2

Let.	Revision	Date	Dr.	CK.	App.
C	RVSD & UPDTD; MOVED TO PRO/E; .37 WAS .34; (05-1048)	5-22-06			



SECTION Z-Z



THIS DRAWING USES CLASSIFIED CHARACTERISTIC SYMBOLS DEFINED IN ENGINEERING PROCEDURE PRO-20

PART NUMBER  
101012-A

FINISH PER HALDEX SPEC 25-X-115  
REMOVE BURRS & BREAK INTERNAL & EXTERNAL CORNERS .010 MAX

DIMENSIONS UNLESS OTHERWISE SPECIFIED CONFORM WITH ASME Y14.5M			
THIS DRAWING CONTAINS CONFIDENTIAL PROPRIETARY INFORMATION OF HALDEX BRAKE PRODUCTS CORPORATION AND IS SUBJECT TO RETURN UPON REQUEST. THE FURNISHING OF THIS DRAWING IS NOT TO BE CONSTRUED AS THE GRANT OF ANY LICENSE, EITHER EXPRESS OR IMPLIED, TO MANUFACTURE, HAVE MANUFACTURED, USE OR SELL THE STRUCTURES SHOWN HEREON.			
EDR Date		SUPERSEDED BY	
SUPERSEDES		SUPERSEDED BY	
Third Angle Projection	TOLERANCES Unless Otherwise Specified 125/Finish per ANSI B46.1		Dimensions in <input checked="" type="checkbox"/> Inches <input type="checkbox"/> mm DO NOT SCALE DRAWING
	1 Place ± 0.1 2 Place ± 0.01 3 Place ± .005 Angular ± 1°		
MATERIAL		Material Approved	Weight lb kg
101012			
Drawn PIERCE 22-May-06	K-5576	 HALDEX BRAKE PRODUCTS CORPORATION Kansas City, Missouri	
Checked HB 3-11-60			
Approved MLS 4-1-60	PART NAME		MFLD COMP IN
Originally for N-3700-B	PART NUMBER		101012-A
Scale 1:1	GENERIC MODEL NO.		101012-A