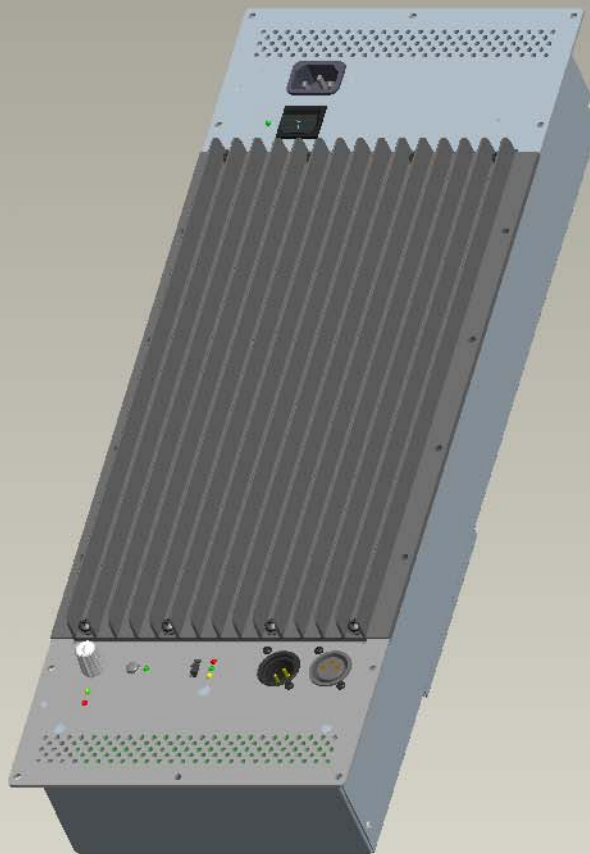




- Show ▾ Settings ▾
- EDIT: SAMPLE
- 2034557-XX\_ASSY\_AMP\_HD1221 (Def. Master Rep)
- ASM\_RIGHT
- ASM\_TOP
- ASM\_FRONT
- ASM\_DEF\_CSYS
- 2034553-1\_HTSNK\_HDX
- 0029091-01\_PCBA\_AMP
- Group HDWR-AMP\_PCE
- 0030539\_THERM\_PTC
- Group HDWR-THERMIS
- Group INSULATORS-AM
- Group CLAMP-AMP\_PCE
- 0029111-XX\_PCBA\_PSU
- Group HDWR-PSU\_PCE
- Group INSULATORS-PS
- Group CLAMP-PSU\_PCE
- 2034550-XX-1\_PNL\_PWF
- Group HDWR-PWR\_PAI
- 0029108-00\_LINE\_FLTR
- 0025661\_CBL\_50MM\_GF
- Group HDWR-LINE\_FILT
- 0031251-00\_PCBA\_PWF
- 0024357\_S\_P\_M3X8\_WS
- 0024357\_S\_P\_M3X8\_WS
- 0033500\_SWITCH\_ROC
- 2034555-1\_BRKT\_FAN\_I
- 0031377\_FAN\_60X60X25
- Group HDWR-FAN
- 2034492-01\_INSULATOF
- 0013948\_CABLE\_TIE\_OI
- 0013948\_CABLE\_TIE\_OI
- 2034551-2\_PNL\_INPUT\_
- Group HDWR-INPUT\_P
- 2034463-00\_PCBA\_HDA
- 2034634-1\_GSKT\_SW\_S
- Group HDWR\_INPUT
- 2034549-1\_SHIELD\_INPI
- Group HDWR-SHIELD
- 0007263-01.PRT
- 0008174-05\_LARGE\_AN
- 0030088-A.PRT
- 0012143-07.PRT
- 0029279\_CBL\_80MM\_5P
- 0029279\_CBL\_80MM\_5P
- 0030978\_CBL\_200MM\_6
- 0029278\_CBL\_165MM\_7
- 0030537\_CBL\_700MM\_2
- 0013708-008\_CBL\_80MM
- 0031331\_CBL\_BLU-GRY
- Group FERRITE

1. From View Manager choose "Simp Rep" tab then "New". After naming the Rep the dialogue box for definition will appear with "Exclude" as the default...



Style State:DEFAULT STYLE  
Simp Rep:SAMPLE

X.X +-0.1  
X.XX +-0.01  
X.XXX +-0.001  
ANG. +-0.5

EDIT: SAMPLE

Substitute

Include Exclude

Method

Select components to be excluded

OK Cancel

Select

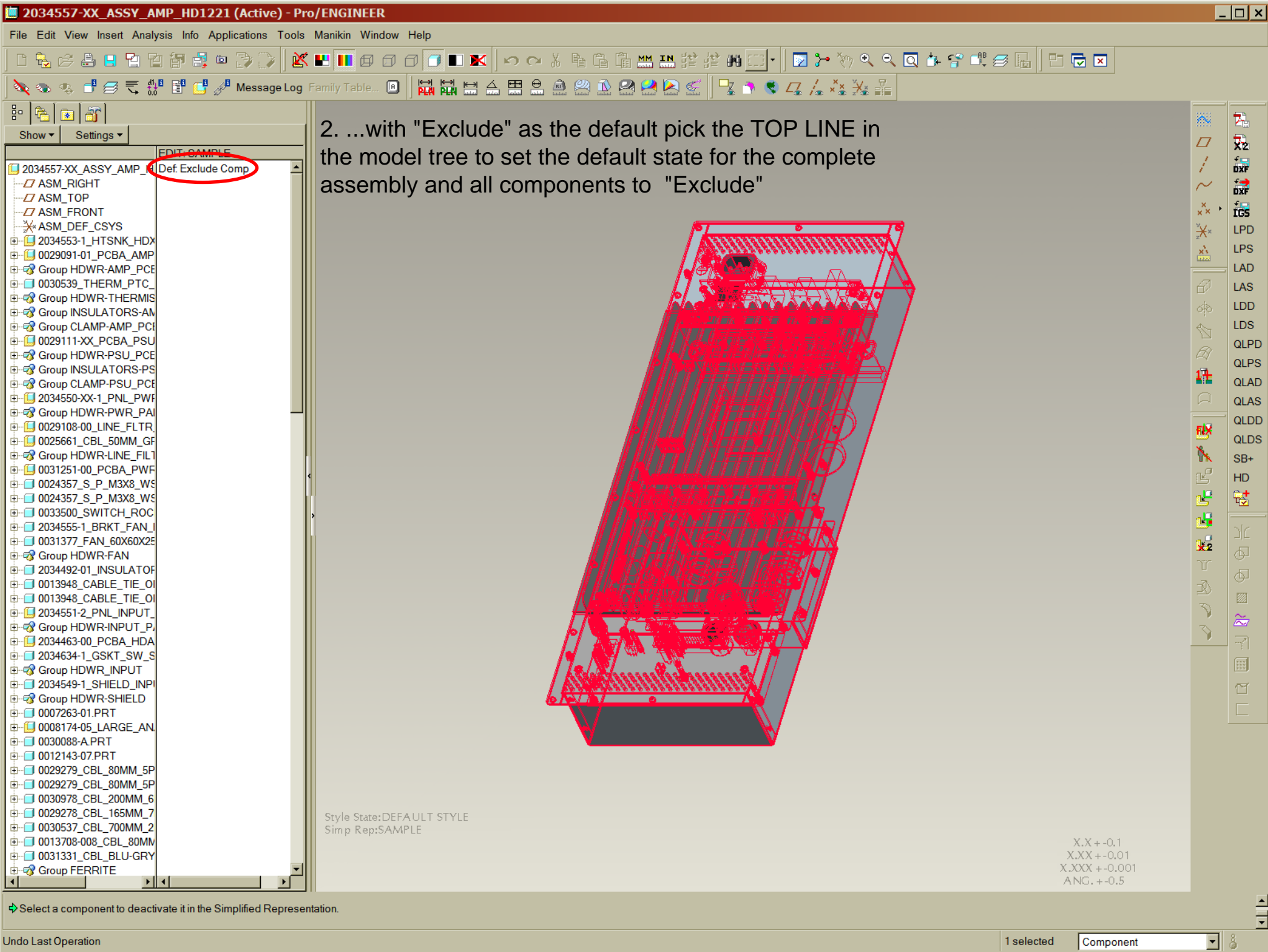
Select 1 or more items.

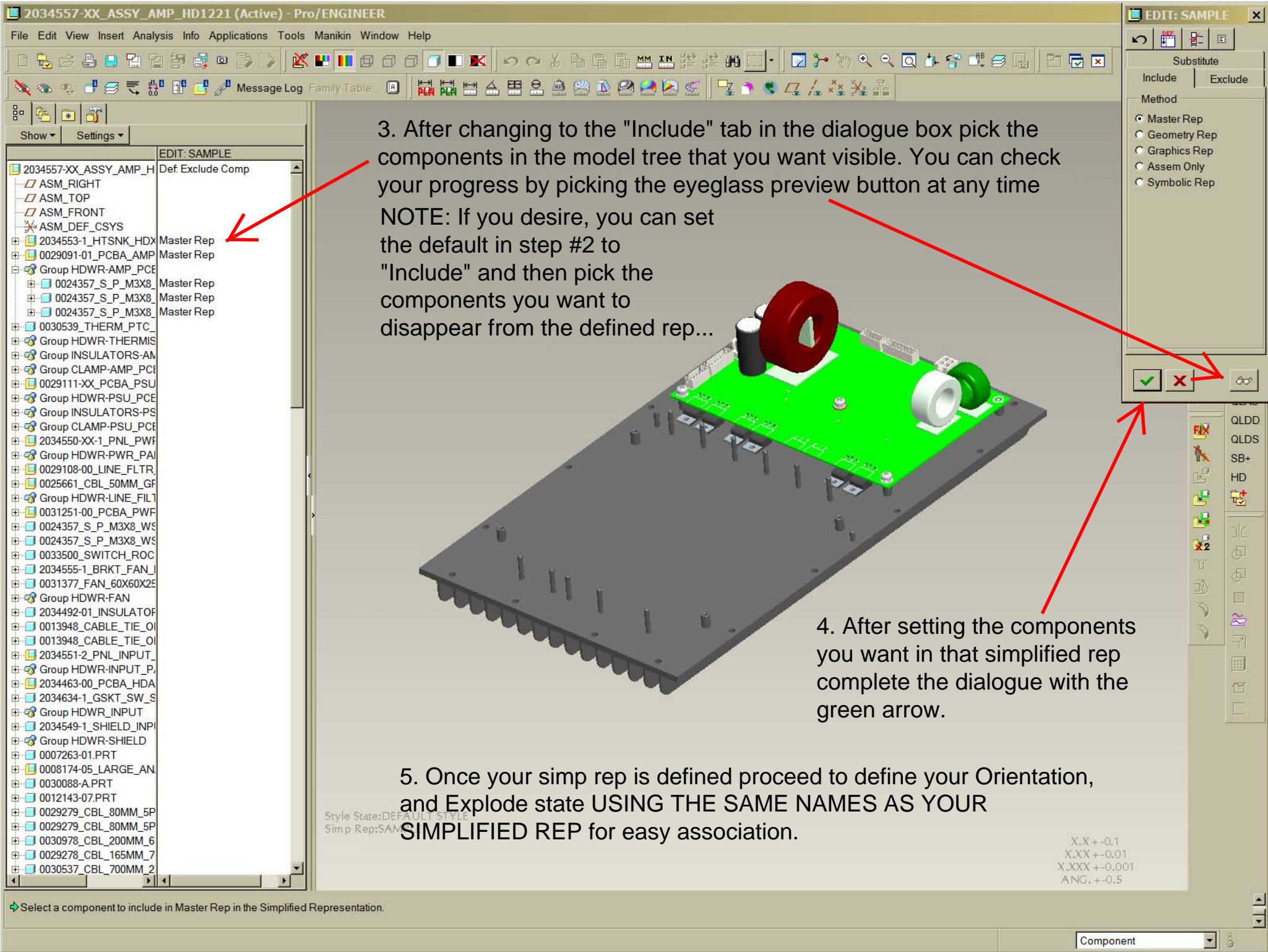
OK Cancel

HD

Select a component to deactivate it in the Simplified Representation.

Component





3. After changing to the "Include" tab in the dialogue box pick the components in the model tree that you want visible. You can check your progress by picking the eyeglass preview button at any time

NOTE: If you desire, you can set the default in step #2 to "Include" and then pick the components you want to disappear from the defined rep...

4. After setting the components you want in that simplified rep complete the dialogue with the green arrow.

5. Once your simp rep is defined proceed to define your Orientation, and Explode state USING THE SAME NAMES AS YOUR SIMPLIFIED REP for easy association.

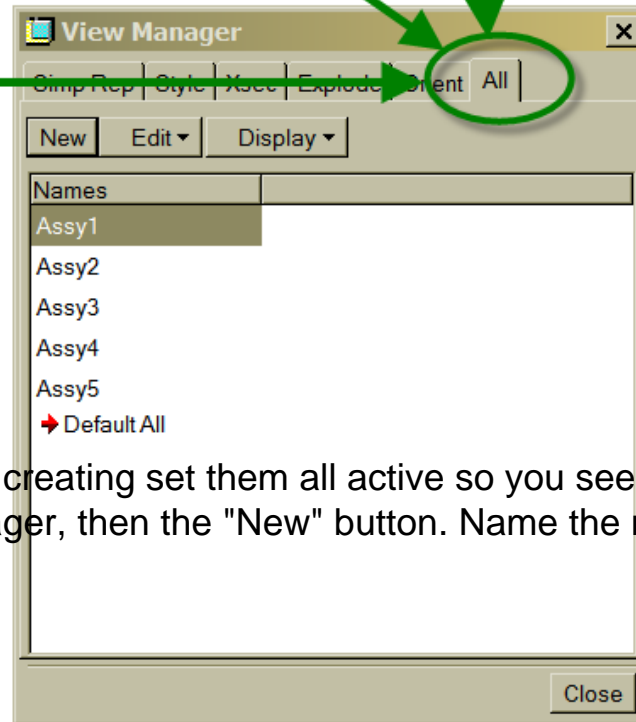
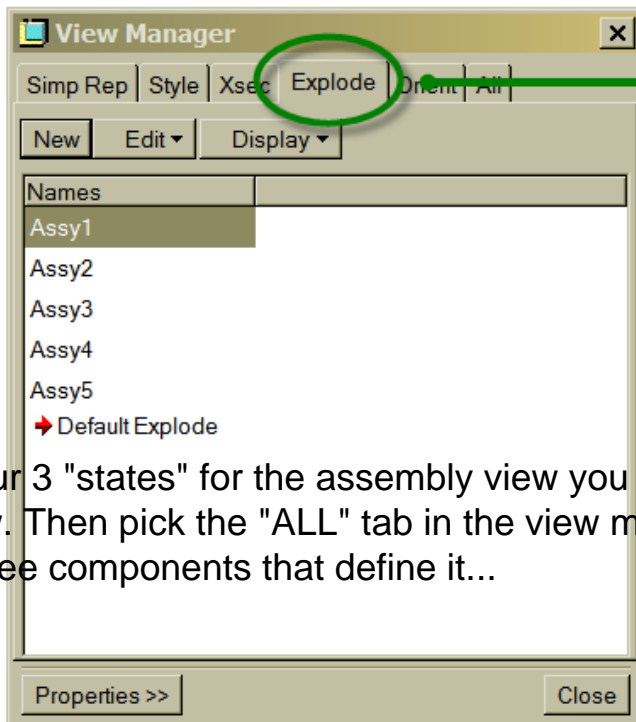
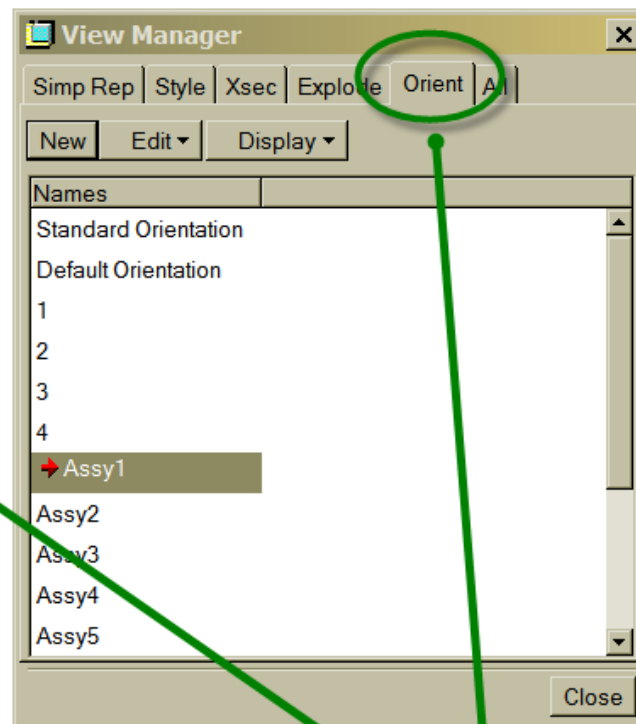
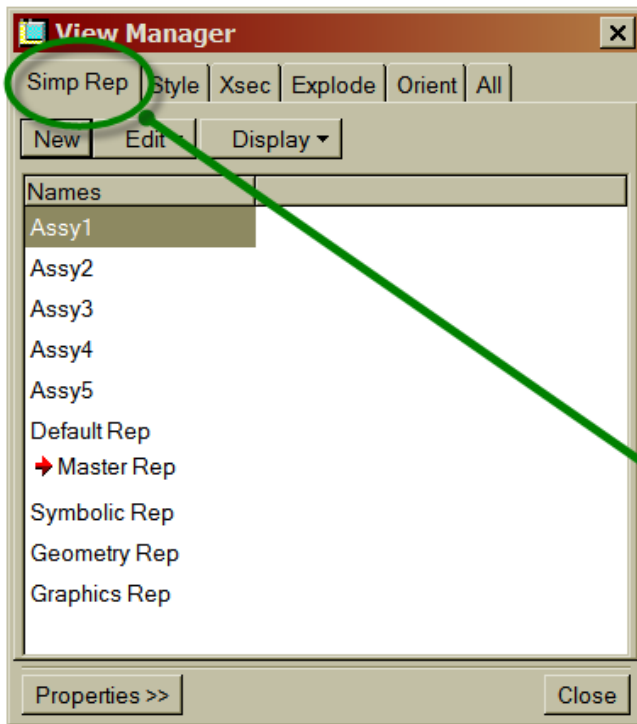
Style State:DEFAULT STYLE  
Simp Rep:SAN

X.X +-0.1  
X.XX +-0.01  
X.XXX +-0.001  
ANG. +-0.5

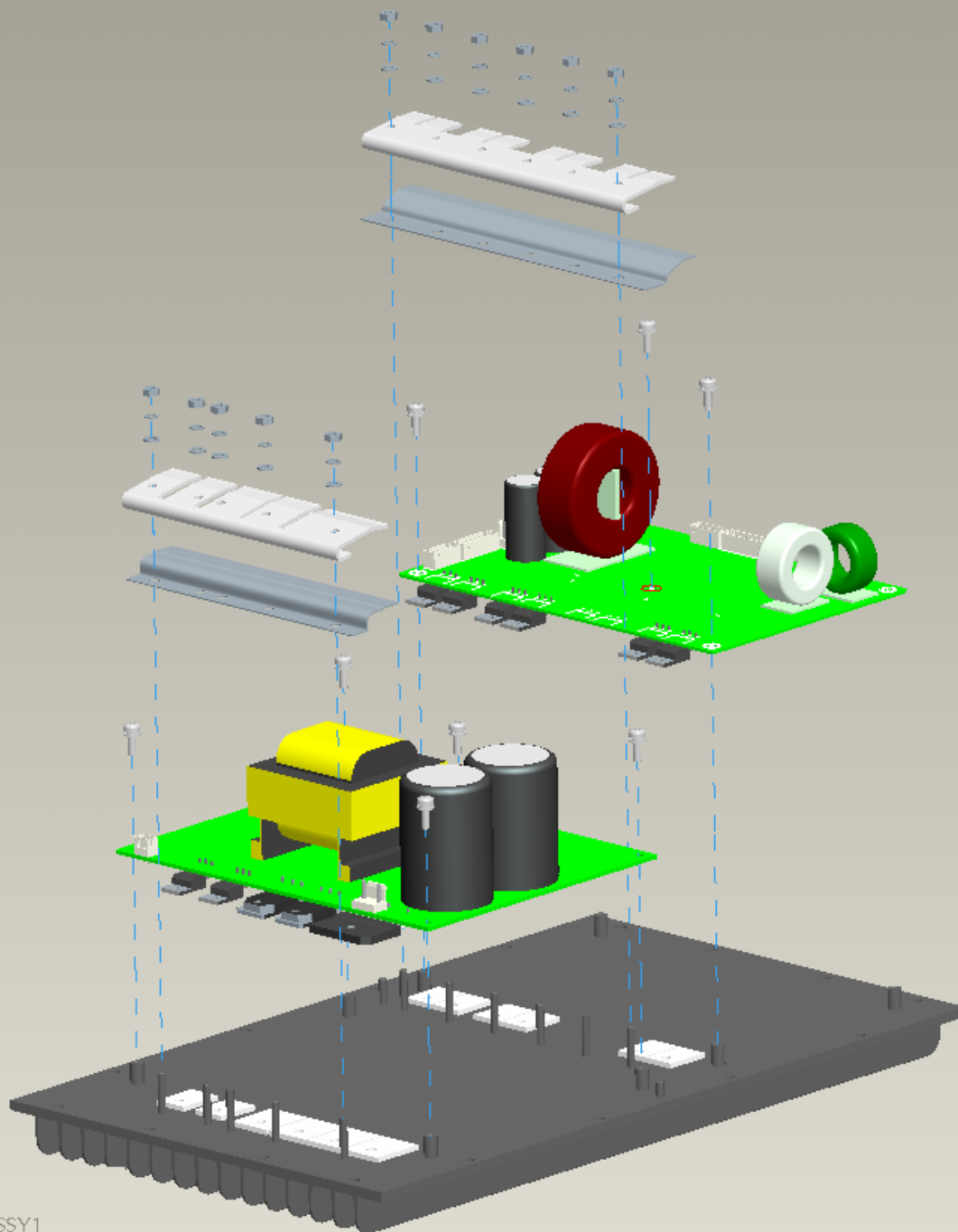
Select a component to include in Master Rep in the Simplified Representation.

Component





6. After defining your 3 "states" for the assembly view you are creating set them all active so you see the 3D version of your assembly view. Then pick the "ALL" tab in the view manager, then the "New" button. Name the new combined state the same as the three components that define it...



This is an example of the Assy1 combined state as seen when creating the Assy1 "All"

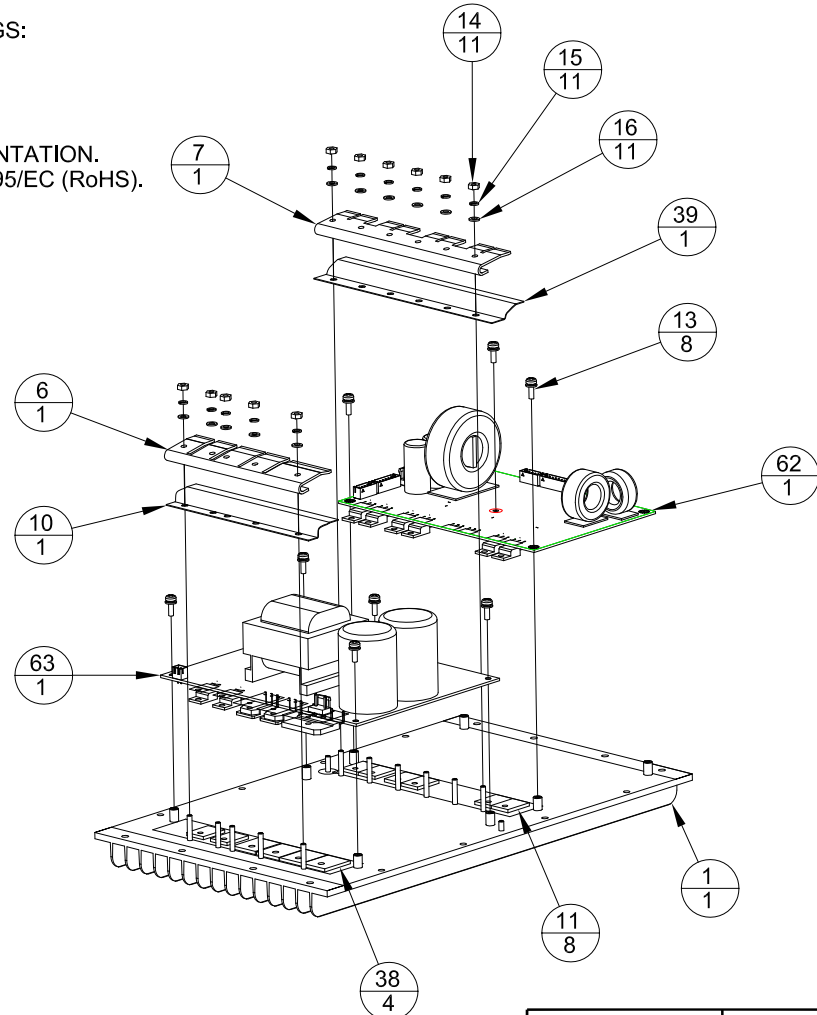
Explode State:ASSY1

On-Dem and Simp Rep:ASSY1

X.X+-0.1  
X.XX+-0.01

- NOTES:
1. APPLY THERMAL JOINT COMPOUND, ITEM 35, TO MATING SURFACES BEFORE ASSEMBLY. WIPE OFF EXCESS SEEPAGE AFTER ASSEMBLY.
  2. APPLY LOCTITE THREAD LOCKING COMPOUND, ITEM 34, TO THREADS BEFORE ASSEMBLY.
  3. IN THIS ASSEMBLY USE THE FOLLOWING TORQUE SETTINGS:
    - a. 2kg-cm [1.7in-lb]
    - b. 4kg-cm [3.5in-lb]
    - c. 8kg-cm [6.9in-lb]
    - d. 18kg-cm [15.6in-lb]
  4. ASSEMBLE FANS WITH ATTENTION TO AIRFLOW AND ORIENTATION.
  5. THIS ITEM MUST BE COMPLIANT WITH EU DIRECTIVE 2002/95/EC (RoHS). USE ONLY RoHS COMPLIANT MATERIALS AND FINISHES.

REV	DESCRIPTION
1	NEW ISSUE PER ECOWHT6103 MELANIE 1/18/10



THIRD ANGLE PROJECTION 	UNLESS OTHERWISE SPECIFIED: ALL DIMENSIONS ARE IN MILLIMETERS DUAL (INCHES) DIMENSIONS FOR REF ONLY  TOLERANCE IN MILLIMETERS X ± 2.5 XX ± .8 XXX ± .25 FRACTIONS ± 1/32 ANGLES ± 1/2°  (XXX) = REF DIMS NO TOLERANCE IMPLIED TSC = THEORETICAL SHARP CORNER DIMENSIONS ACROSS CENTERLINES TO BE SYMMETRICAL	REVISION CONTROL FOR THIS DOCUMENT IS MAINTAINED IN LOUD TECHNOLOGIES' PRODUCT LIFECYCLE MANAGEMENT APPLICATION.  ALL APPROVAL INFORMATION IS RECORDED ELECTRONICALLY  DRAWN BY: MELANIE DATE: 1/18/10	 LOUD Technologies Inc. ONE MAIN STREET, WHITINSVILLE, MA 01588 USA
DRAWING NUMBER: 2034557-XX REVISION: 1 PRO ENGINEER			

This is a DXF output from sheet one of the sample assembly drawing.

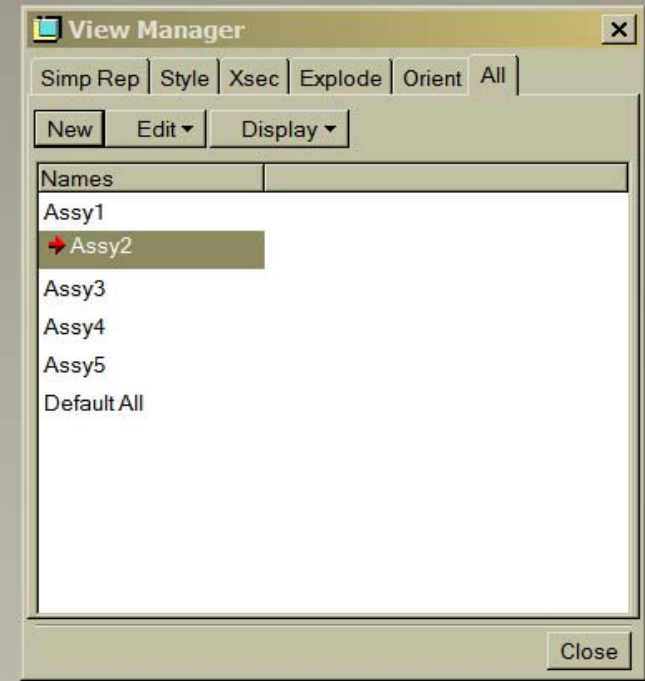
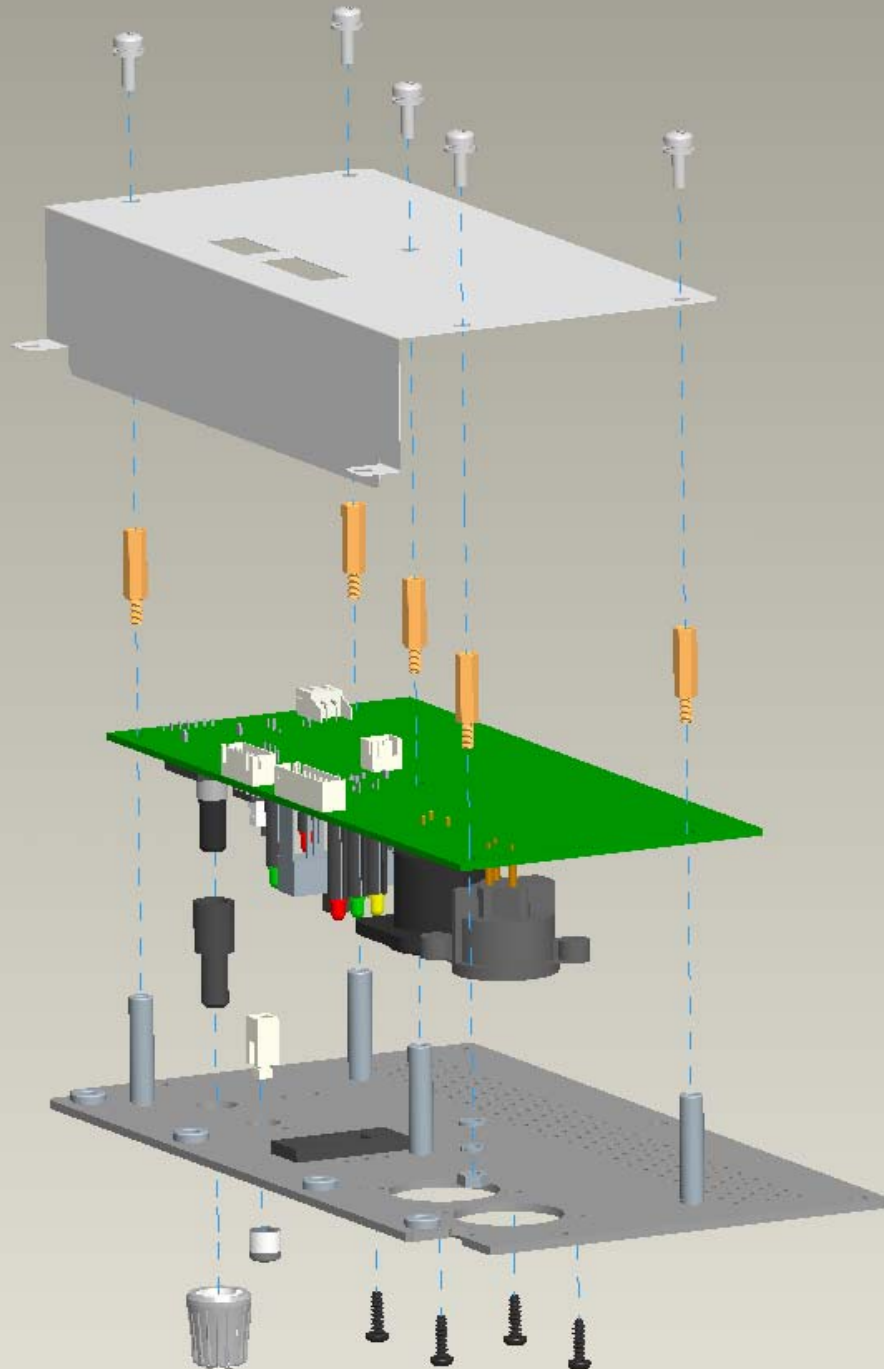
--- When creating the new general view the prompt for whether you want to use a "Combined State" was answered by picking "Assy1" from the list.

--- The parts list is based on the simplified rep for the combined state view. If set off of the sheet it does not print into the PDF

--- Fixing indexes and creating balloons follows normal processes.

2034557-XX\_ASSY\_AMP\_HD1221

Eng. Item #	DESCRIPTION	PART NBR.	QTY.
1	HEATSINK HDEXT	2034553	1
6	FIT PART-2 HD SERIES	0027691	1
7	FIT PART-1 SR V2	027689	1
10	INSULATOR SILICON RUBBER 32 X 120 X 0.5 THK	2034552	1
11	INSULATOR 19.4X14X2MM CER	0027081	8
13	SCR SEMS M3X8 PNH PHILLIP STL NICKEL	0024357	8
14	NUT HEX D3X5.5X2.5MM STL CLR ZN	0025352	11
15	WSHR SPRING D3.2X5.5X1.0 STL NICKEL	0025448	11
16	WSHR FLT D3.2X5.5X0.5MM STL NICKEL	0025447	11
38	INSULATOR 23.3X18.9X2MM CER	0028827	4
39	INSULATOR 2 HD SERIES	0032638	1
62	PCB ASSY AMP HD1521	0029091-01	1
63	PCB ASSY POWER SUPPLY HD1531/HD1521	0029111-XX	1

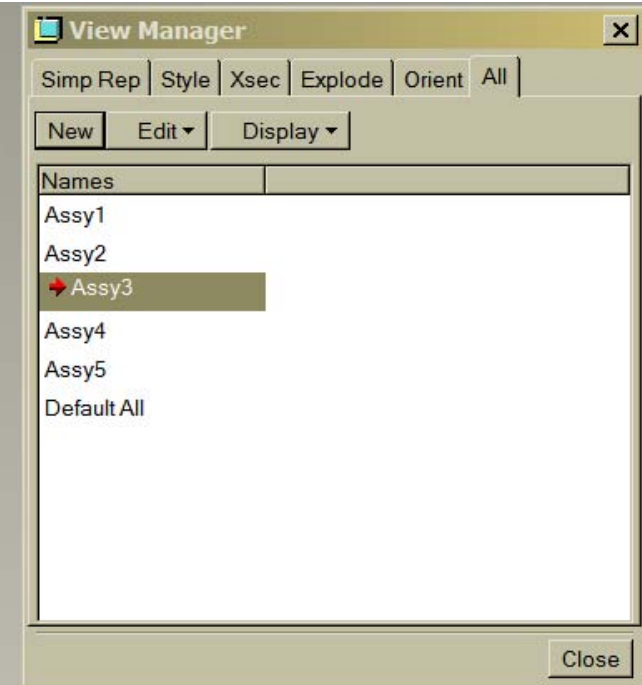
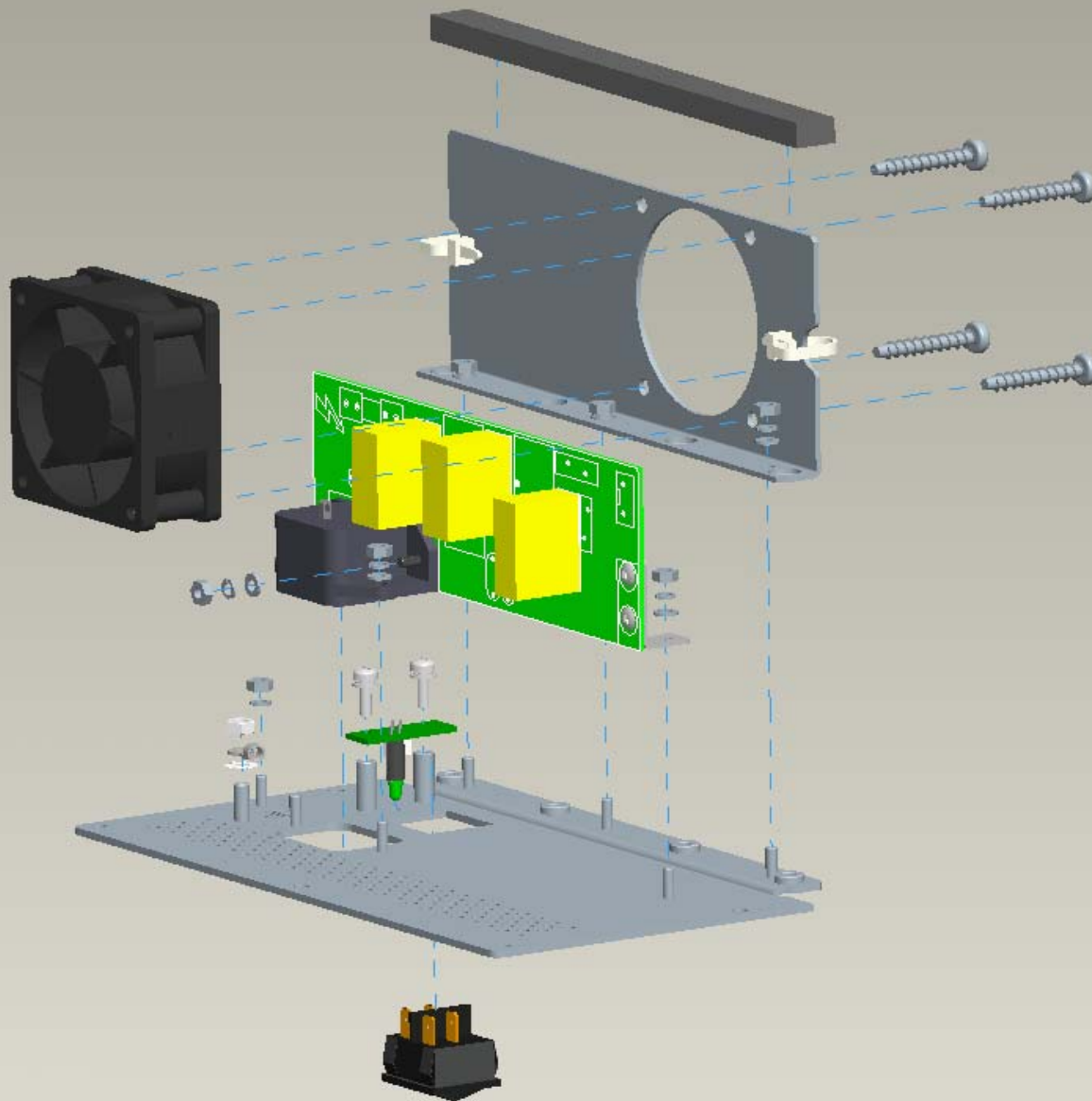


This is an example of the  
Assy2 combined state as  
seen when creating the  
Assy1 "All"

Explode State:ASSY2

On-Dem and Simp Rep:ASSY2

X.X+-0.1  
X.XX+-0.01  
X.XXX+-0.001  
ANG.+-0.5



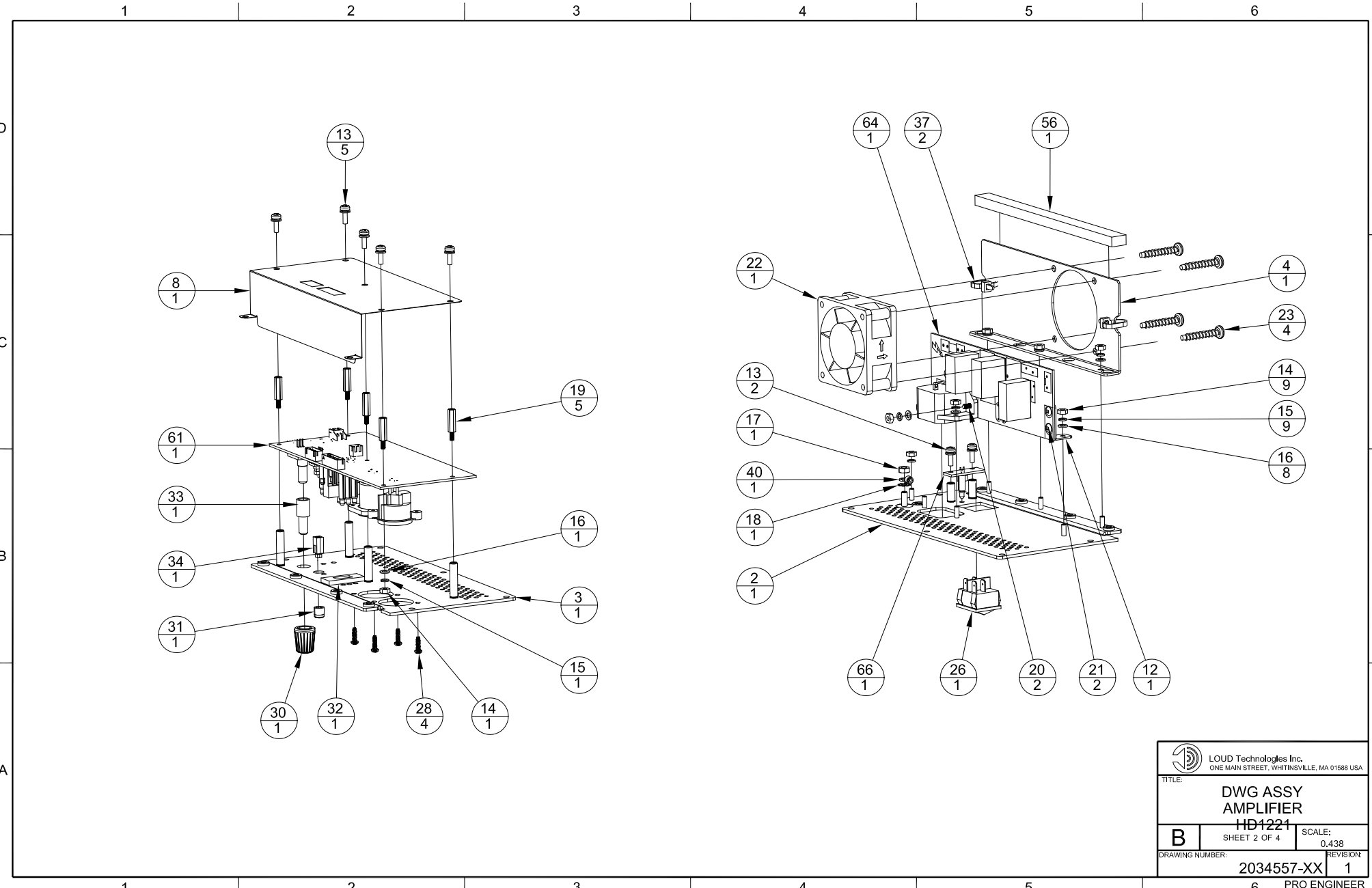
This is an example of the  
Assy3 combined state as  
seen when creating the  
Assy1 "All"

Explode State:ASSY3

On-Dem and Simp Rep:ASSY3

X.X+-0.1  
X.XX+-0.01  
X.XXX+-0.001





This is a DXF output from sheet two of the sample assembly drawing.

--- When creating the new general views the prompt for whether you want to use a "Combined State" was answered by picking "Assy2" from the list for the left view, and "Assy3" for the right view

--- The parts lists is based on the simplified rep for the combined state of each view. When set off of the sheet they do not print into the PDF

2034557-XX\_ASSY\_AMP\_HD1221

Eng. Item #	DESCRIPTION	PART NBR.	QTY.
3	PANEL INPUT HD1221	2034551	1
8	SHIELD INPUT AMP HDEXT	2034549	1
13	SCR SEMS M3X8 PNH PHILLIP STL NICKEL	0024357	5
14	NUT HEX D3X5.5X2.5MM STL CLR ZN	0025352	1
15	WSHR SPRING D3.2X5.5X1.0 STL NICKEL	0025448	1
16	WSHR FLT D3.2X5.5X0.5MM STL NICKEL	0025447	1
19	STANDOFF COPPER M3X16 HD SERIES	0033223	5
28	SCR-M3	0025422	4
30	LARGE ANALOG KNOB	0008174-05	1
31	RND BUTTON CAP (7MM) CONTROL GRAY TOP WHITE BOTTOM	0012143-07	1
32	GASKET SWITCH SLIDE HDEXT	2034634	1
33	POTENTIOMETER ADAPTER - EXTENDER	0007263-01	1
34	ADAPTER BUTTONCAPS FOR 24.8MM XLR AND JACKS	0030088	1
61	PCB ASSY DSP HDA y HD1221	2034463-00	1

Eng. Item #	DESCRIPTION	PART NBR.	QTY.
2	PANEL POWER HD1221	2034550-XX	1
4	FAN BRACKET HDEXT	2034555	1
12	FIT PART PCB HD SERIES	0027899	1
13	SCR SEMS M3X8 PNH PHILLIP STL NICKEL	0024357	2
14	NUT HEX D3X5.5X2.5MM STL CLR ZN	0025352	9
15	WSHR SPRING D3.2X5.5X1.0 STL NICKEL	0025448	9
16	WSHR FLT D3.2X5.5X0.5MM STL NICKEL	0025447	8
17	NUT HEX D4X7X3MM STL CLR ZN	0024378	1
18	NUT HEX D4X7X3MM STL CLR ZN	0024377	1
20	SCR MACH M3X10 PNH PHILLIP STL BLK ZN	0025443	2
21	POP RIVET 2.7MM	0029433	2
22	FAN 12VDC 60X60X25MM 25.1CFM	0031377	1
23	SCR SELFTAP PLASTIC M5X30 PNH PHILLIP STL ZN	0032642	4
26	SWITCH ROCKER DPST 6A 125VAC/250VAC 10A 125VAC 6(4)A 250VAC 5/80A 200VAC UL/DE/1	0032601	1
37	LOCKING CABLE TIE TYRAP	0013948	2
40	ASSY CBL 18AWG 50MM YELLOW-GREEN UL1015 WITH D4MM TERM	0025661	1
56	FOAM EVA 12 X 169 X 7	2034554	1
64	PCB ASSY LINE FILTER HD1531/HD1521 100-120V	0029108-00	1
66	PCB ASSY POWER LED BOARD HD1531/HD1521	0031251-00	1

--- Fixing indexes and creating balloons follows normal processes paying attention to picking the correct repeat region for the view you are working on...

1

2

3

4

5

6

D

D

C

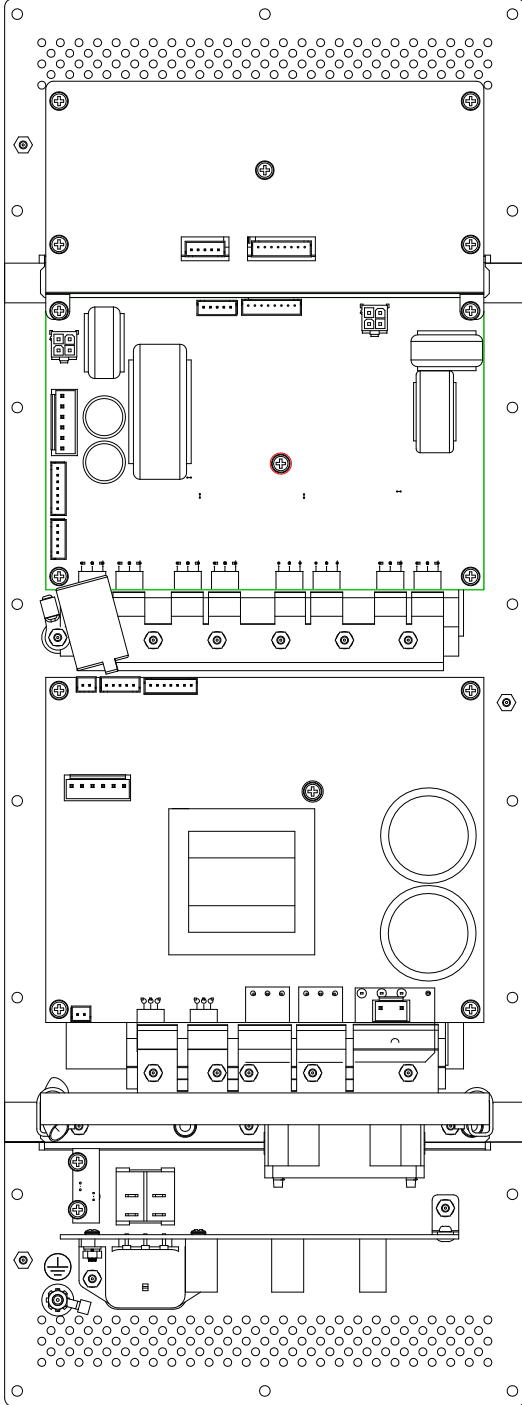
C

B


B

A

A



The combined state can be used to define a straight on view as well...

 LOUD Technologies Inc. ONE MAIN STREET, WHITINSVILLE, MA 01588 USA	
TITLE: <b>DWG ASSY          AMPLIFIER          HD1221</b>	
<b>B</b>	SCALE: 0.375
SHEET 3 OF 4	REVISION: <b>1</b>
DRAWING NUMBER: <b>2034557-XX</b>	
6 PRO ENGINEER	

1

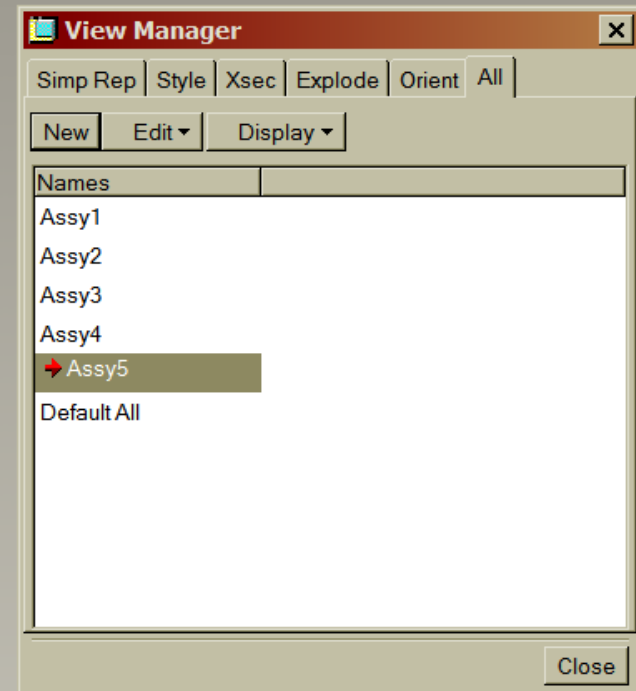
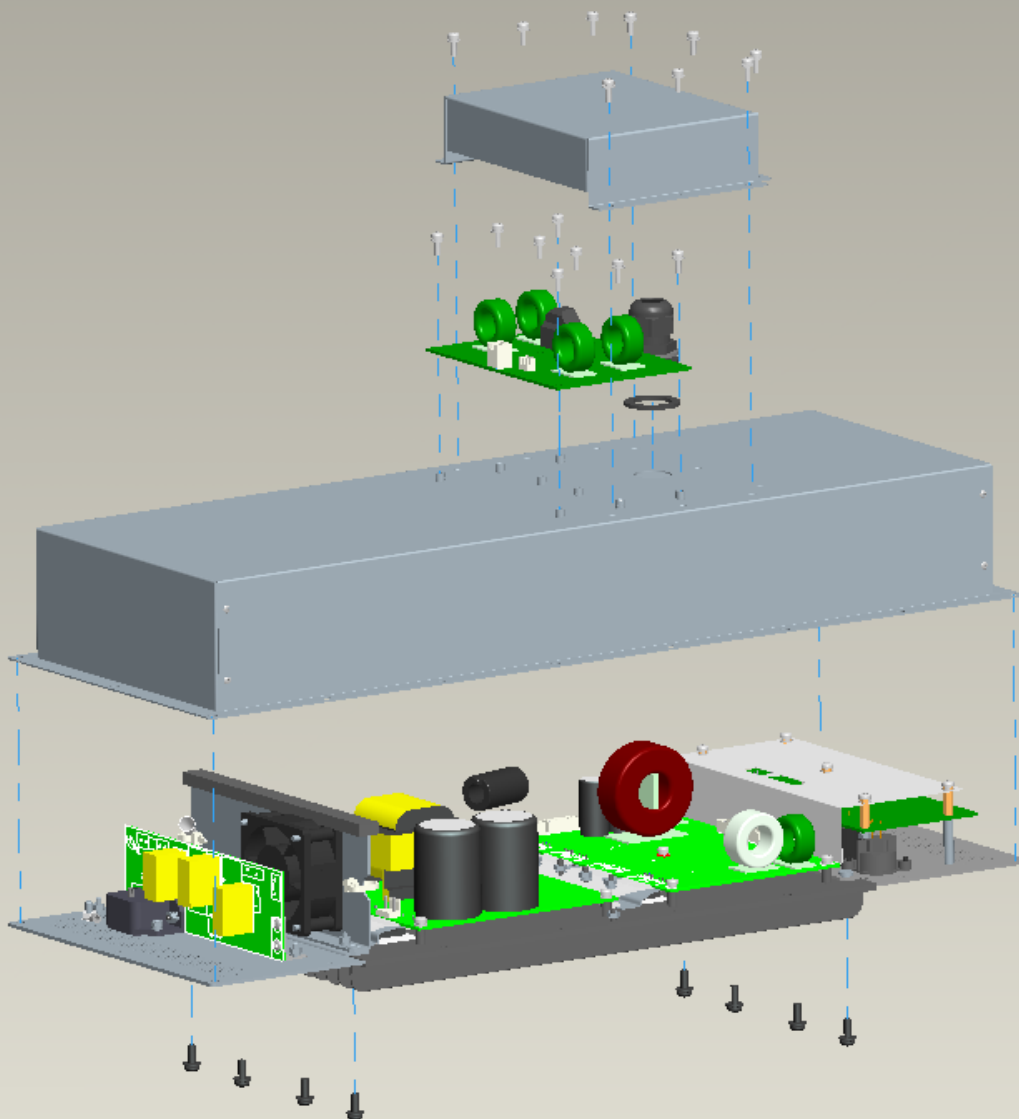
2

3

4

5

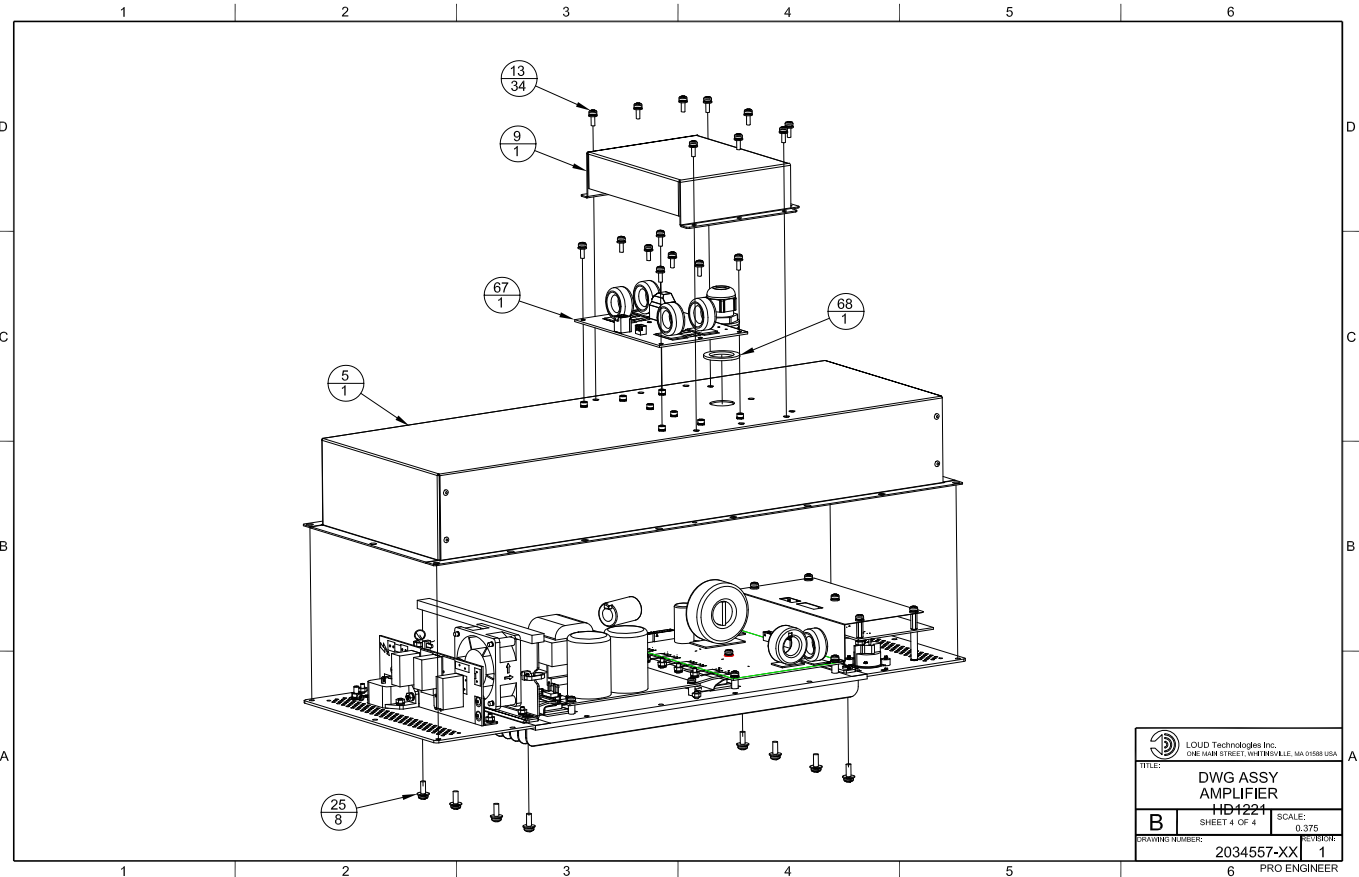
6



This is an example of the Assy5 combined state as seen when creating the Assy1 "All"  
--- The Simp Rep was defined w/ Include ALL

Explode State:ASSY5

On-Dem and Simp Rep:ASSY5



LOUD Technologies Inc. ONE TAMM STREET, WRENTHAM, MA 01982 USA	
TITLE: DWG ASSY AMPLIFIER HD1221	
B SHEET 4 OF 4	SCALE: 0.375
DRAWING NUMBER: 2034557-XX	REVISION: 1
6 PRO ENGINEER	

2034557-XX\_ASSY\_AMP\_HD1221

Eng. Item #	DESCRIPTION	PART NBR.	QTY.
1	HEATSINK HDEXT	2034553	1
2	PANEL POWER HD1221	2034550-XX	1
3	PANEL INPUT HD1221	2034551	1
4	FAN BRACKET HDEXT	2034555	1
5	COVER AMP HDEXT	2034556	1
6	FIT PART-2 HD SERIES	0027691	1
7	FIT PART-1 SR V2	027689	1
8	SHIELD INPUT AMP HDEXT	2034549	1
9	EMC CAP HD SERIES	0030165	1
10	INSULATOR SILICON RUBBER 32 X 120 X 0.5	2034552	1
11	INSULATOR 19.4X14X2MM CER	0027081	8
12	FIT PART PCB HD SERIES	0027899	1
13	SCR SEMS M3X8 PNH PHILLIP STL NICKEL	0024357	34
14	NUT HEX D3X5.5X2.5MM STL CLR ZN	0025352	24
15	WSHR SPRING D3.2X5.5X1.0 STL NICKEL	0025448	24
16	WSHR FLT D3.2X5.5X0.5MM STL NICKEL	0025447	21
17	NUT HEX D4X7X3MM STL CLR ZN	0024378	1
18	NUT HEX D4X7X3MM STL CLR ZN	0024377	1
19	STANDOFF COPPER M3X16 HD SERIES	0033223	5
20	SCR MACH M3X10 PNH PHILLIP STL BLK ZN	0025443	2
21	POP RIVET 2.7MM	0029433	2
22	FAN 12VDC 60X60X25MM 25.11CFM	0031377	1
23	SCR SELFTAP PLASTIC M5X30 PNH PHILLIP STL ZN	0032642	4
25	SCR SEMS M4X16 PNH PHILLIP STL BLK ZN	0028822	8
26	SWITCH ROCKER DPST 6A 125VAC/250VAC 10A 125VAC 6(4)A 250VAC 5/8BA 2609ACDLVDE/1	0025422	4
28	SCR-M3	0008174-05	1
30	LARGE ANALOG KNOB	0012143-07	1
31	RND BUTTON CAP (7MM) CONTROL GRAY TOP WHITE BOTTOM	2034634	1
32	GASKET SWITCH SLIDE HDEXT	0007263-01	1
33	POTENTIOMETER ADAPTER - EXTENDER	0030088	1
34	ADAPTER BUTTONCAPS FOR 24.8MM XLR AND JACKS	2034492-01	1
36	INSULATOR SLEEVE FBRGLSS COATED 8MM ID WHITE 30MM LG	0013948	2
37	LOCKING CABLE TIE TYRAP	0028827	4
38	INSULATOR 23.3X18.9X2MM CER	0032638	1
39	INSULATOR 2 HD SERIES	0025661	1
40	ASSY CBL 18AWG 50MM YELLOW-GREEN UL1015 WITH D4MM TERM	0029279	2
43	ASSY CBL 26AWG 80MM WHITE UL1007 WITH 5P 2.54MM TERMS	0030088	1
44	ASSY CBL 18AWG 200MM RED/RED/BLACK/BLACK/BLUE/BLUE UL1015 WITH 6P 2.54MM TERMS	0029278	1
45	ASSY CBL 26AWG 165MM WHITE UL1007 WITH 7P 2.54MM TERMS	0030539	1
46	THERM PTC 100 50C WITH 260MM CABLE	0030537	1
47	ASSY CBL 26AWG 700MM WHITE/BLK UL1007 WITH 2P 2.54MM TERMS	0013708-008	1
48	CBL ASSY 8 PIN 2.5MM TJC3 SINGLE ROW 8 CM	0028827	4
54	ASSY CBL 16AWG 800MM BLUE/GRAY 900MM RED/BLACK UL1007 WITH 2X2P 2.54MM TERM	0031831	1
55	MAG FERRITE EMC CLAMP D11X20MM	2034554	1
56	FOAM EVA 12 X 169 X 7	2034463-00	1
61	PCB ASSY DSP HDA y HD1221	0029091-01	1
62	PCB ASSY AMP HD1521	0029111-XX	1
63	PCB ASSY POWER SUPPLY HD1531/HD1521	0029106-00	1
64	PCB ASSY LINE FILTER HD1531/HD1521 10G-120V	0031251-00	1
66	PCB ASSY POWER LED BOARD HD1531/HD1521	0030123-01	1
67	GASKET STRAIN RELIEF	33160390	1