

# PTC® Live Global

## Creo Admin 102

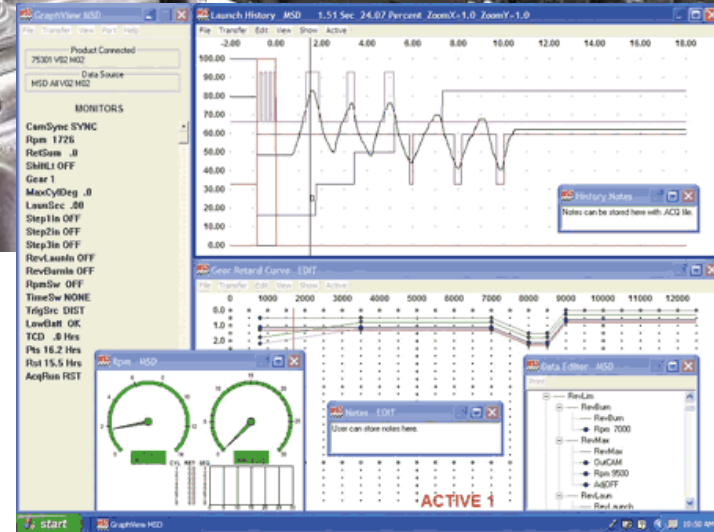
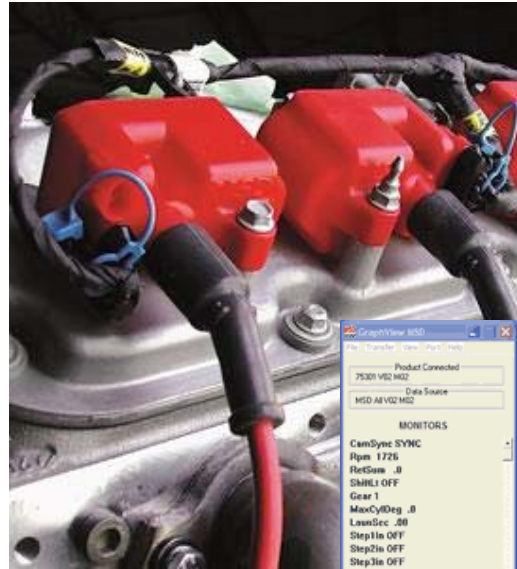
**David Haigh**

LLNL-PRES-756153

This work was performed under the auspices of the U.S. Department of Energy by Lawrence Livermore National Laboratory under Contract DE-AC52-07NA27344. Lawrence Livermore National Security, LLC

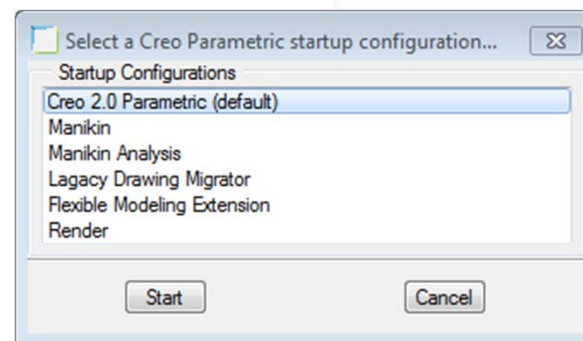
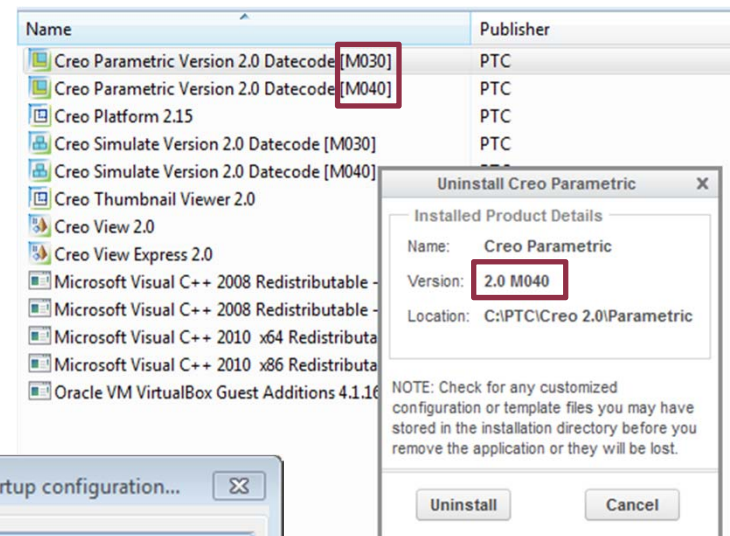
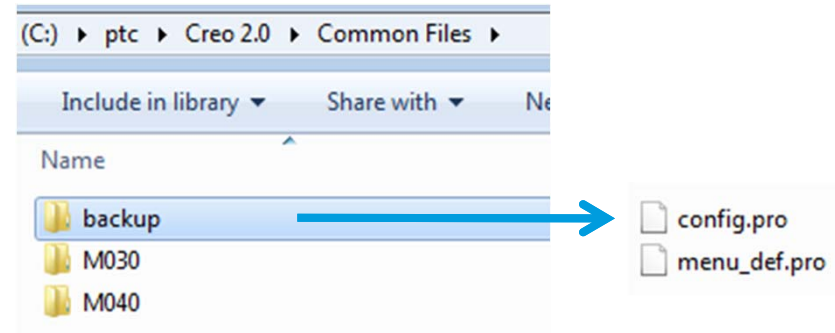
2013 Anaheim





# Maintenance Install Issues

- The installer only backs up:
  - Config.pro
  - Menu\_def.pro
- Not backed up are:
  - Config.sup
  - Creo\_parametric\_admin\_customization.ui
- Custom Fonts will need to be reinstalled.
  - ProE had the same issue
- The installer leaves old versions of creoagent
- The Programs and Features Control Panel shows the old versions of Creo after a scripted install
  - If you try to delete the old version it will delete the newly installed software
  - xml's from new or update installs make no difference
- License Configuration menu order
  - Reverse order of creation



Server installs use to work well in ProEngineer

Must locally install: \*can be disabled see cs60712

- creoagent
- Thumbviewer
  - Both are maintenance build dependent

Running multiple versions is difficult because of the thumbviewer

Need a way to highly automate local install of Creo

Note:

Disabling the creoagent causes Creo to forget the last workspace used. The work around is to replace the <local cache>\.Settings\active\_server\_config.fld with <local cache>\.Settings\config.fld in your startup script.

Like this:

- `Del "%USERPROFILE%\creo_2_home\cache\PDMLink_cache\PTC\ProENGINEER\.Settings\active_server_config.fld"`
- `Echo f|xcopy "%USERPROFILE%\creo_2_home\cache\PDMLink_cache\PTC\ProENGINEER \.Settings\config.fld" "%USERPROFILE%\creo_2_home\cache\PDMLink_cache\PTC\ProENGINEER \.Settings\active_server_config.fld"`

# Automating The Creo Install

We need four scripts

Staging Script  
Scheduling Script  
Install Script  
Post Install Script



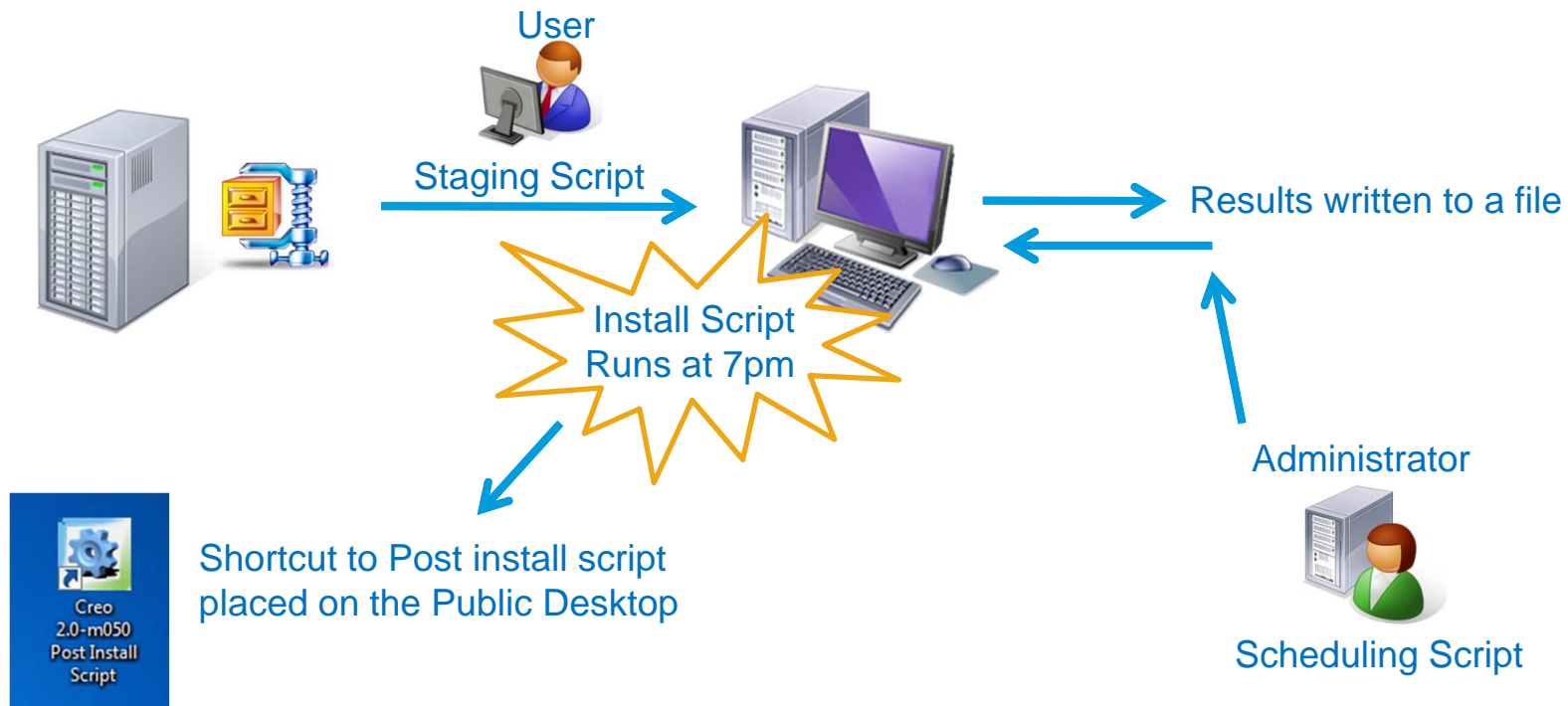
User  
Administrator  
Task Scheduler  
User

Process is initiated with an email to the users



Please double click on this link to stage the Creo-m050 software on your computer for later installation.

<\\servername\sharename\Creo 2.0-m050\Staging Script.bat>



# Contents of Zip File

Manually install Creo & Creo Help on a system

Collect the following from the Creo loadpoint

creobase.p.xml	←	<Load Point>\Common Files\mXXX\bin\ pim\xml
pma.p.xml	←	<Load Point>\Parametric\bin\pim\xml
sim.p.xml	←	<Load Point>\Simulate\bin\pim\xml
dma.p.xml	←	<Load Point>\Direct\bin\pim\xml
creohelp.p.xml	←	<Load Point>\Help\bin\pim\xml
creoagent_32.msi	←	<Load Point>\Common Files\MXXX\install\addon
creoagent_32_64.msi	←	<Load Point>\Common Files\MXXX\install\addon
thumbviewer_32.msi	←	<Load Point>\Common Files\MXXX\install\addon
thumbviewer_32_64.msi	←	<Load Point>\Common Files\MXXX\install\addon

Collect the following from the CreoView unzipped download

CreoView_64.exe	←	installers\i486_nt_productview
CreoView_32.exe	←	installers\i486_nt_productview

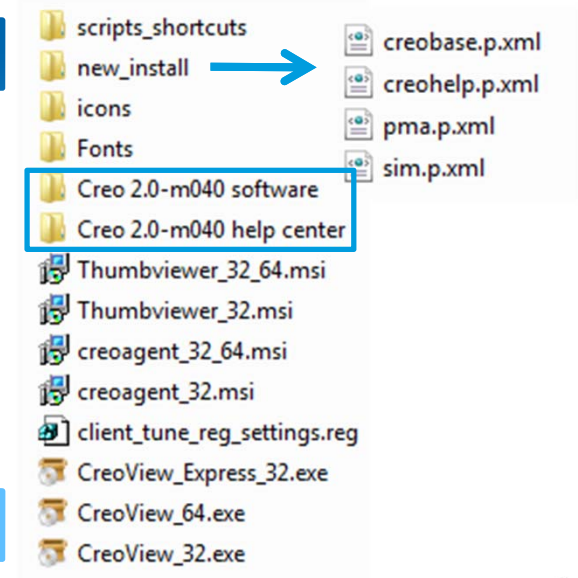
Download CreoView Express from here:

[http://www.ptc.com/appserver/wcms/forms/response.jsp?&im\\_dbkey=93561&lang=en](http://www.ptc.com/appserver/wcms/forms/response.jsp?&im_dbkey=93561&lang=en)

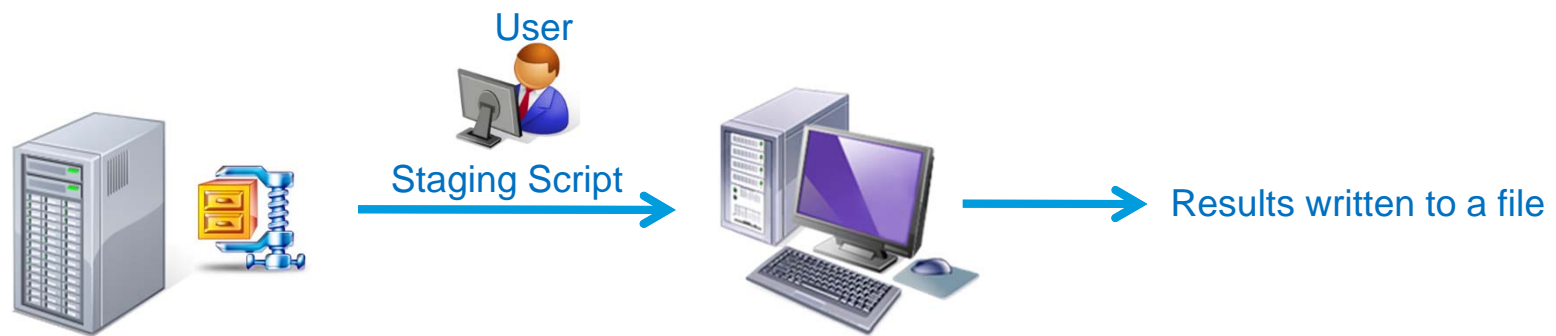
Creoview\_Express\_32.exe

Other optional files:

- Fonts
- Icons
- Shortcuts & scripts
- Reg file for client tuning



# The Staging Script



1. set PATH=%PATH%;"P:/bin"
2. rem \*\* Copy Zip File to Local Drive C:\ptc\Staging\_Folder
3. echo d|xcopy "P:\Creo 2.0-m040\creo\_2\_m040\_update.zip" "C:\ptc\Staging\_Folder"
4. rem \*\* Extract Zip File using 7zip
5. cd /d "C:\ptc\Staging\_Folder"
6. 7za x "creo\_2\_m040\_update.zip"
7. rem \*\* Move scripts & Icons to startup\_scripts folder
8. if not exist "C:\ptc\startup\_scripts\icons" (mkdir "C:\ptc\startup\_scripts\icons")
9. xcopy "C:\ptc\Staging\_Folder\Creo 2.0-m040\icons\\*" "C:\ptc\startup\_scripts\icons" /y /r
10. xcopy "C:\ptc\Staging\_Folder\Creo 2.0-m040\scripts\_shortcuts\\*" "C:\ptc\startup\_scripts" /y /r
11. rem \*\*\*\*\* Add to Log File: results, Machine, User, OS bitness, date, & time \*\*\*\*\*
12. FOR /F "tokens=2 delims==" %%A IN ("WMIC csproduct GET Name /VALUE ^| FIND /I "Name="") DO SET machine=%%A
13. if not exist "C:\ptc\startup\_scripts\install\_creo2\_m050.bat" (SET valid=failed) ELSE (Set valid=success)
14. if exist C:\Windows\SysWOW64 (Set bitness=64\_Bit) ELSE (Set bitness=32\_Bit)
15. set CREO2\_STAGING\_OUTPUT=%valid% %computername% %username% %machine% %bitness% %date% %time%
16. echo %CREO2\_STAGING\_OUTPUT% >> \\servername\sharename\Creo\_maintenace\_update\creo2\_stage-040.txt
17. rem \*\*\*\*\* Delete zip file \*\*\*\*\*
18. If {%valid%}=={success} (del C:\ptc\Staging\_Folder\creo\_2\_m040\_update.zip)



# Output of Staging Script

The Scheduling script looks at this file

```
1. success pcname-1    fred1    Precision WorkStation T5400    64_Bit Fri 04/12/2013    7:52:59.78
2. success pcname-2    flint1   Precision WorkStation T5500    64_Bit Thu 04/11/2013    8:16:49.23
3. failed pcname-3     stone1   Precision WorkStation T5400    32_Bit Thu 04/11/2013    15:59:21.
4. success pcname-4    barnyl   Precision M6600    64_Bit Thu 04/11/2013    14:27:57.50
```

Splits it into two files:

Success File:

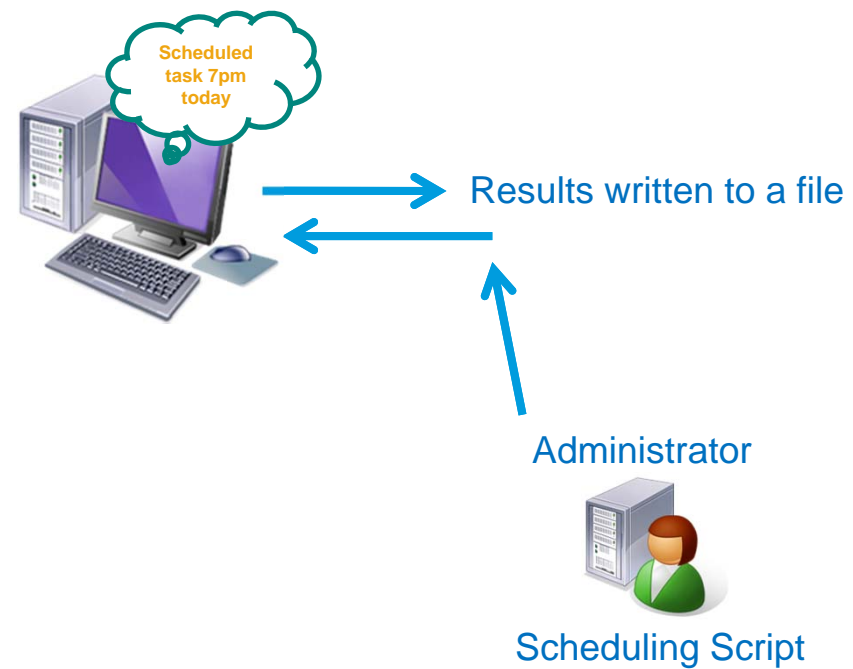
```
1. success pcname-1    fred1    Precision WorkStation T5400    64_Bit Fri 04/12/2013    7:52:59.78
2. success pcname-2    flint1   Precision WorkStation T5500    64_Bit Thu 04/11/2013    8:16:49.23
3. success pcname-4    barnyl   Precision M6600    64_Bit Thu 04/11/2013    14:27:57.50
```

Failed File:

```
1. failed pcname-3     stone1   Precision WorkStation T5400    32_Bit Thu 04/11/2013    15:59:21.
```

# The Scheduling Script

This has to be run by an administrator with rights on all the computers in the list



This has to be run by an administrator with rights on all the computers in the list

1. **rem \*\* Separate listing into success and failure lists**
2. `findstr "success" \\servername\sharename\Creo_maintenace_update\creo2_stage-040.txt>>  
\\servername\sharename\Creo_maintenace_update\success.txt`
3. `findstr "failed" \\servername\sharename\Creo_maintenace_update\creo2_stage-040.txt>>  
\\servername\sharename\Creo_maintenace_update\failed.txt`
4. **rem \*\* for each line in the success file run the at command to install the software**
5. `FOR /F "tokens=2" %%i in (\\servername\sharename\Creo_maintenace_update\success.txt) do (at \\%%i 19:00 cmd /c "  
C:\ptc\startup_scripts\install_creo2_m050.bat" > \\servername\sharename\Creo_maintenace_update\output.txt 2>&1)`
6. **rem \*\* Do some house cleaning by adding todays date to the file names.**
7. `move \\servername\sharename\Creo_maintenace_update\creo2_stage-040.txt  
\\servername\sharename\Creo_maintenace_update\creo2_stage-040-%%date:~10,4%-%%date:~4,2%-%%date:~7,2%.txt`
8. `move \\servername\sharename\Creo_maintenace_update\success.txt  
\\servername\sharename\Creo_maintenace_update\success-%%date:~10,4%-%%date:~4,2%-%%date:~7,2%.txt`
9. `move \\servername\sharename\Creo_maintenace_update\failed.txt  
\\servername\sharename\Creo_maintenace_update\failed-%%date:~10,4%-%%date:~4,2%-%%date:~7,2%.txt`

# Breakdown Scheduling Command

## Success File:

```
1. success pncame-1 fredl Precision WorkStation T5400 64_Bit Fri 04/12/2013 7:52:59.78
2. success pncame-2 flintl Precision WorkStation T5500 64_Bit Thu 04/11/2013 8:16:49.23
3. success pncame-4 barnyl Precision M6600 64_Bit Thu 04/11/2013 14:27:57.50
```

## Scheduling Command

```
FOR /F "tokens=2" %%i in (\\servername\sharename\Creo_maintenace_update\success.txt) do (at \\%%i
19:00 cmd /c "C:\ptc\startup_scripts\install_creo2_m050.bat" >
\\servername\sharename\Creo_maintenace_update\output.txt 2>&1)
```

```
FOR /F "tokens=2" %%i in (file)
```

For each line in the success file, find the second token, and assign it to the value %i

```
at \\%%i 19:00
```

Create a scheduled task at 7pm on the machine named %i

It will run once, whether the user is logged on or not

```
"C:\ptc\local_new_install_script.bat"
```

This is the command to run.

```
> \\servername\sharename\Creo_maintenace_update\output.txt 2>&1)
```

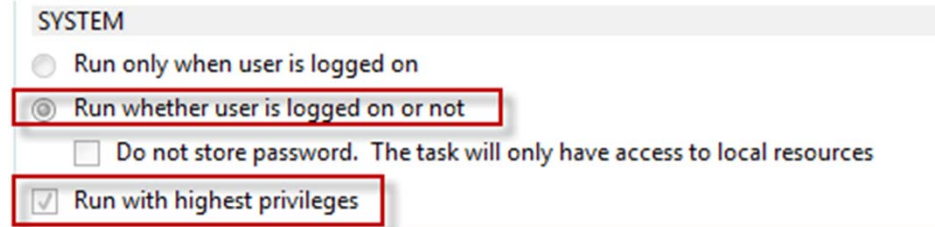
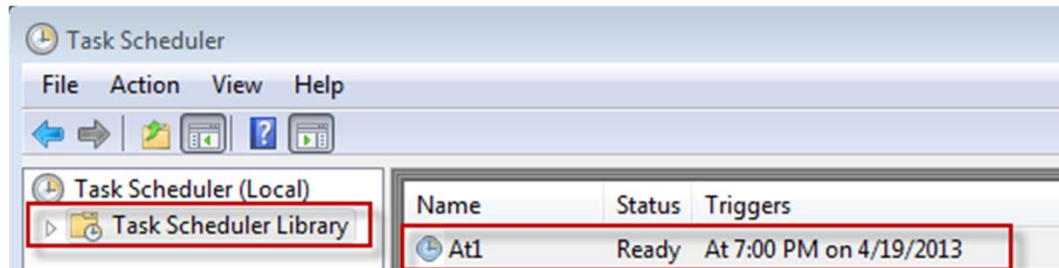
Output any errors from the "at" command into this file.

All machines in the list will start the install script at 7pm.

**Important!** The schedule service operates independently of a user login -- Drive mappings, are not necessarily available when a scheduled event executes.

# Verify Scheduled Tasks

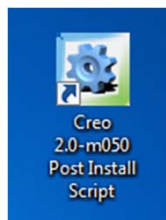
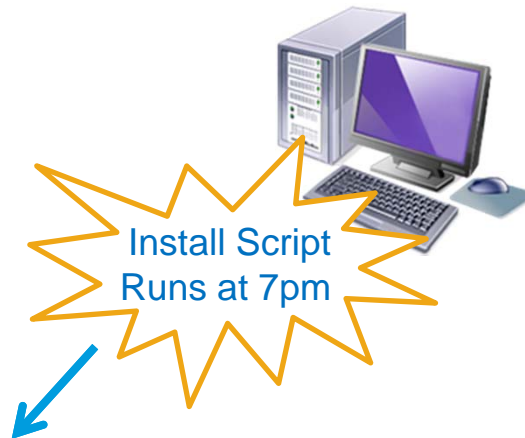
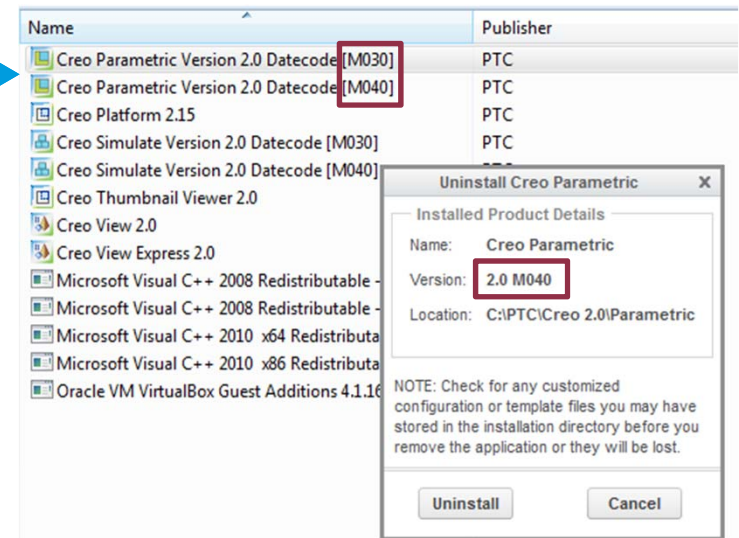
From the start menu pick **All Programs, Accessories, System Tools, Task Scheduler**  
In the Task Scheduler, pick on **Task Scheduler Library**



# The Install Script

## Note:

As long as the scripted installer continues to leave indications of the old Datecode, perhaps we should uninstall first. See the Appendix for details on scripted uninstall.



Shortcut to Post install script placed on the Public Desktop

## Install CreoView Express & Creo Parametric/Simulate/Help

1. set CREOVERSION=M040
2. rem \*\* Install Creo View Express
3. cd /d "C:\ptc\Staging\_Folder\Creo 2.0-m040"
4. start /w CreoView\_Express\_32.exe /vADDLOCAL="ALL" /qn APPLICATIONFOLDER="C:\ptc\Creo 2.0\CreoViewExpress"
5. rem \*\* Install Creo software and Creo help
6. "C:\ptc\Staging\_Folder\Creo 2.0-m040\Creo 2.0-m040 software\setup.exe" -xml "C:\ptc\Staging\_Folder\Creo 2.0-m040\new\_install\creobase.p.xml"
7. "C:\ptc\Staging\_Folder\Creo 2.0-m040\Creo 2.0-m040 software\setup.exe" -xml "C:\ptc\Staging\_Folder\Creo 2.0-m040\new\_install\pma.p.xml"
8. "C:\ptc\Staging\_Folder\Creo 2.0-m040\Creo 2.0-m040 software\setup.exe" -xml "C:\ptc\Staging\_Folder\Creo 2.0-m040\new\_install\sim.p.xml"
9. "C:\ptc\Staging\_Folder\Creo 2.0-m040\Creo 2.0-m040 help center\setup.exe" -xml "C:\ptc\Staging\_Folder\Creo 2.0-m040\new\_install\creohelp.p.xml"

Notice that your telling the installer to use an xml file for the install choices.

The xml files contain all the choices you made, when you manually installed the software.

## Install 32 or 64bit specific files

- Creoagent
- Thumbviewer
- Creo View
- Custom Fonts

### 10.rem \*\* Check for OS type

```
11. if exist C:\Windows\SysWOW64 GOTO x64
```

```
12. :x32
```

```
13. "C:\ptc\Staging_Folder\Creo 2.0-m040\creoagent_32.msi" /passive
```

```
14. "C:\ptc\Staging_Folder\Creo 2.0-m040\Thumbviewer_32.msi" /passive
```

```
15. start /w CreoView_32.exe /vADDLOCAL="ALL" LICENSESERVER="7788@servername.xxx.com" /qn  
APPLICATIONFOLDER="C:\ptc\Creo 2.0\CreoView"
```

```
16. echo f|xcopy "C:\ptc\Staging_Folder\Creo 2.0-m040\Fonts\32bit fonts\ascii.src" "C:\ptc\Creo 2.0\Common  
Files\%CREOVERSION%\text\usascii\ascii.src" /y /r
```

```
17. echo f|xcopy "C:\ptc\Staging_Folder\Creo 2.0-m040\Fonts\32bit fonts\ascii.fnt" "C:\ptc\Creo 2.0\Common  
Files\%CREOVERSION%\i486_nt\text\usascii\ascii.fnt" /y /r
```

```
18. GOTO continue
```

```
19. :x64
```

```
20. "C:\ptc\Staging_Folder\Creo 2.0-m040\creoagent_32_64.msi" /passive
```

```
21. "C:\ptc\Staging_Folder\Creo 2.0-m040\Thumbviewer_32_64.msi" /passive
```

```
22. start /w CreoView_64.exe /vADDLOCAL="ALL" LICENSESERVER="7788@servername.xxx.com" /qn  
APPLICATIONFOLDER="C:\ptc\Creo 2.0\CreoView"
```

```
23. echo f|xcopy "C:\ptc\Staging_Folder\Creo 2.0-m040\Fonts\64bit fonts\ascii.src" "C:\ptc\Creo 2.0\Common  
Files\%CREOVERSION%\text\usascii\ascii.src" /y /r
```

```
24. echo f|xcopy "C:\ptc\Staging_Folder\Creo 2.0-m040\Fonts\64bit fonts\ascii.fnt" "C:\ptc\Creo 2.0\Common  
Files\%CREOVERSION%\x86e_win64\text\usascii\ascii.fnt" /y /r
```

```
25. GOTO continue
```



## Install

- registry settings
- Verify installation
- Remove staged files, old creoagent software & output results
- Put post install shortcut on desktop

26.:continue

27.rem \*\* Install registry settings for Client Side Tuning

28.regedit /s "C:\ptc\Staging\_Folder\Creo 2.0-m040\client\_tune\_reg\_settings.reg"

29.rem \*\* Check to see if software is installed

30.if not exist "C:\ptc\Creo 2.0\Common Files\M040" (SET valid=failed) ELSE (Set valid=success)

31.rem \*\* Remove old versions of the creoagent - use the command "wmic product get name" to find the names

32.If {%valid%}=={success} (wmic product where name="Creo Platform 2.10" call uninstall)

33.If {%valid%}=={success} (wmic product where name="Creo Platform 2.11" call uninstall)

34.rem \*\* Remove staging folder

35.cd /d "C:\ptc"

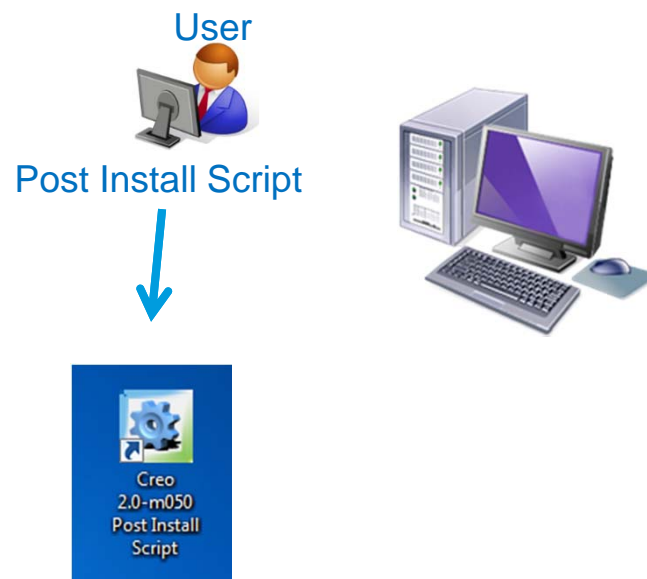
36.If {%valid%}=={success} (rd /s /q "C:\ptc\Staging\_Folder")

37.rem \*\* Put Link to post install script on users desktop

38.echo y|xcopy "C:\ptc\startup\_scripts\Creo 2.0-m050 Post Install Script.lnk" "C:\Users\Public\Desktop\."

# The Post Install Script

- Check for Directories and Files
- Install PTCU Training Files
- Copy custom guides to working directory
- Make new shortcuts on desktop
- Remove old shortcuts from desktop



- Check for Directories and Files
- Install PTCU Training Files

1. **rem \*\* Check for directories/files & create if necessary**
2. if not exist "%USERPROFILE%\Creo\_2\_home" (mkdir "%USERPROFILE%\Creo\_2\_home")
3. if not exist "%USERPROFILE%\plot\_files" (mkdir "%USERPROFILE%\plot\_files")
4. if not exist "%USERPROFILE%\Creo\_2\_home\cache\no\_pdm\_cache" (mkdir "%USERPROFILE%\Creo\_2\_home\cache\no\_pdm\_cache")
5. if not exist "%USERPROFILE%\Creo\_2\_home\cache\PDMLink\_cache" (mkdir "%USERPROFILE%\Creo\_2\_home\cache\PDMLink\_cache")
6. if not exist "%USERPROFILE%\Creo\_2\_home\configs\user\my\_config.pro" (echo f|xcopy "P:\Creo 2.0\our\_configs\my\_config.pro" "%USERPROFILE%\Creo\_2\_home\configs\user\my\_config.pro" /y /r /s /e)
7. **rem \*\* Install Training Files**
8. if not exist "%USERPROFILE%\Creo\_2\_home\PTCU" (echo d|xcopy "P:\Creo 2.0\PTCU\\*" "%USERPROFILE%\Creo\_2\_home\PTCU" /y /r /s /e)

## Scripting Note:

Echo f|xcopy "P:\path\to\file" "Path\to\place\file" options

This pipes the answer to the question "is this a file or directory", thus supplying the answer, and preventing a script pause

- Copy custom guides to startup directory
- Make new shortcuts on desktop
- Remove old shortcuts from desktop

## 9. rem \*\* Copy pdf's to Creo home dir

```
10. echo f|xcopy "P:\Creo 2.0\configs\Dimension Rounding In Creo.pdf"  
    "%USERPROFILE%\Creo_2_home\Dimension Rounding In Creo.pdf" /y /r /s /e  
11. echo f|xcopy "P:\Creo 2.0\configs\User Mapkeys.pdf" "%USERPROFILE%\Creo_2_home\User Mapkeys.pdf"  
    /y /r /s /e  
12. echo f|xcopy "P:\Creo 2.0\our_configs\Default Ribbon Customization.pdf"  
    "%USERPROFILE%\Creo_2_home\Default Ribbon Customization.pdf" /y /r /s /e  
13. echo f|xcopy "P:\Creo 2.0\our_configs\Your Personal Creo Configuration file.pdf"  
    "%USERPROFILE%\Creo_2_home\Your Personal Creo Configuration file.pdf" /y /r /s /e
```

## 14. rem \*\* Make new shortcuts on desktop

```
15. echo y|xcopy "C:\ptc\startup_scripts\Creo 2.0 PROD Local.Ink" "%USERPROFILE%\Desktop\  
16. echo y|xcopy "C:\ptc\startup_scripts\Creo 2.0 No PDM Local.Ink" "%USERPROFILE%\Desktop\  
17. echo y|xcopy "C:\ptc\startup_scripts\Borrow PTC.Ink" "%USERPROFILE%\Desktop\  
18. echo y|xcopy "C:\ptc\startup_scripts\PTC License Usage.Ink" "%USERPROFILE%\Desktop\  
19. echo y|xcopy "C:\ptc\startup_scripts\Creo 2 Home.Ink" "%USERPROFILE%\Desktop\  
20. echo y|xcopy "C:\ptc\startup_scripts\Plot Files.Ink" "%USERPROFILE%\Desktop\  
"
```

## 21. rem \*\* Delete old shortcuts from desktop

```
22. del /f /q "%USERPROFILE%\Desktop\Creo 2.0 Production.Ink"  
23. del /f /q "%USERPROFILE%\Desktop\Creo 2.0 Training.Ink"  
24. del /f /q "%USERPROFILE%\Desktop\Creo 2.0 No PDM.Ink"  
25. del /f /q "C:\Users\Public\Desktop\Creo 2.0-m050 Post Install Script.Ink"
```

# Startup Scripts



Standard Configs



Development



QA



Production



**ASM0001 (Active) - Creo Parametric**

File	LLNL	Model	Analysis	Annotate	Render	Manikin	Tools	View	Applications
Export PDF		New Inch Drawing		Drawing Dependency			Modify NWC Parameters		FIX ALL MODEL LAYERS
Screen Capture		New Metric Drawing		Open-Save Behavior			Add NWC Parameters, Relations, and Notes		FIX CURRENT MODEL LAYERS
				Model Tree			Add Iso Views		
	Plotting	New Drawing		Modify Creo					Modify Object

**DRW0001 (Active) - Creo Parametric**

File	LLNL	Layout	Table	Annotate	Sketch	Legacy Migration	Analysis	Review	Tools	View
PDF (pdf)		AB Size Print		New Inch Drawing		Stamps Inch	Stamps Metric	Drawing Dependency		Feet Inches Fractions
hpgl-2 plot		Export PDF		New Metric Drawing		Assy BOM Inch	Assy BOM Metric	Open-Save Behavior		D & E Size
Create a .tiff file (tiff)						Part BOM Inch	Part BOM Metric	Model Tree		B & C Size
	Plotting			New Drawing		BOM's & Stamps		Modify Creo		Detail Setup

# Startup Scripts Local Install

Startup script should:

- Change read permissions on existing configs
- Copy server configs to client load point
- Make the configs read only

config.pro  
config.sup  
Creo\_parametric\_admin\_customization.ui



```
attrib -R "C:\ptc\Creo 2.0\Common Files\M050\text\config.pro"  
attrib -R "C:\ptc\Creo 2.0\Common Files\M050\text\config.sup"  
attrib -R "C:\ptc\Creo 2.0\Common Files\M050\text\config.Creo_parametric_admin_customization.ui"  
xcopy "P:\loadpoint_configs\*" "C:\ptc\Creo 2.0\Common Files\M050\text" /y /r  
attrib +R "C:\ptc\Creo 2.0\Common Files\M050\text\config.pro"  
attrib +R "C:\ptc\Creo 2.0\Common Files\M050\text\config.sup"  
attrib +R "C:\ptc\Creo 2.0\Common Files\M050\text\config.Creo_parametric_admin_customization.ui"
```



# Startup Scripts Multiple Servers

## Connecting to Multiple Servers:

- Kill the creoagent
- Delete %Appdata% server registration info
- Set a unique cache location



Development



QA



Production

```
tskill creoagent
del "%USERPROFILE%\AppData\Local\PTC\Creo\Platform\2.19\agent\ServerMgr\srv_mgr_db.fldx"
set PTC_WF_ROOT=%USERPROFILE%\creo_2_home\cache\dev_cache\PTC\ProENGINEER
or
set PTC_WF_ROOT=%USERPROFILE%\creo_2_home\cache\qa_cache\PTC\ProENGINEER
or
set PTC_WF_ROOT=%USERPROFILE%\creo_2_home\cache\PDMLink_cache\PTC\ProENGINEER
```

Note regarding m050:

```
%USERPROFILE%\AppData\Roaming\PTC\Creo\Platform\2.11\ServerMgr\srv_mgr_db.fldx
%USERPROFILE%\AppData\Local\PTC\Creo\Platform\2.19\agent\ServerMgr\srv_mgr_db.fldx
```

←M030

←M050

## Connecting to no Server:

- Kill the creoagent
- Delete ALL server registration info
- Set a unique cache location

```
tskill creoagent  
del "%USERPROFILE%\AppData\Local\PTC\Creo\Platform\2.19\agent\ServerMgr\srv_mgr_db.fldx"  
del "%USERPROFILE%\creo_2_home\no_pdm_cache\PTC\ProENGINEER\wfws2008  
del "%USERPROFILE%\creo_2_home\no_pdm_cache\PTC\ProENGINEER\Settings\active_server_config.fld  
set PTC_WF_ROOT=%USERPROFILE%\creo_2_home\cache\no_pdm_cache\PTC\ProENGINEER
```



## Modify a Default Company Ribbon File

Should only load system .ui from start-in directory

Remove any personal .ui files

Several possible locations for the .ui file.

1. Load point
2. Local Cache Directory
3. Creo Start-in Directory

1. del "C:\ptc\Creo 2.0\Common Files\M050\text\config.Creo\_parametric\_admin\_customization.ui"
2. del "%USERPROFILE%\Creo\_2\_home\cache\no\_pdm\_cache\PTC\ProENGINEER\.Settings\creo\_parametric\_customization.ui"
3. Move "%USERPROFILE%\Creo\_2\_home\creo\_parametric\_customization.ui"  
"%USERPROFILE%\pro\Creo\_2\_home\configs\creo\_parametric\_customization.ui"
4. echo f|xcopy " P:\loadpoint\_configs \creo\_parametric\_admin\_customization.ui"  
"%USERPROFILE%\Creo\_2\_home\creo\_parametric\_customization.ui" /y /r
5. set PTC\_WF\_ROOT=%USERPROFILE%\creo\_2\_home\cache\no\_pdm\_cache\PTC\ProENGINEER

- Because you are only editing one file, every edit gets saved to this file
- Go to **File, Help, System information** to see which files were loaded
  - Should only be one

## Contact Info:

David Haigh  
haigh1@llnl.gov  
Phone: 925-424-3931  
Fax: 925-423-7496

Lawrence Livermore National Lab  
7000 East Ave, L-125  
Livermore, CA 94550

## Creo Admin 101

[http://communities.ptc.com/servlet/JiveServlet/download/3205-5-45122/CUST134\\_Creo\\_Creo\\_Admin\\_101\\_Haigh.pdf](http://communities.ptc.com/servlet/JiveServlet/download/3205-5-45122/CUST134_Creo_Creo_Admin_101_Haigh.pdf)

## ProE Admin 101

<http://portal.ptcuser.org/p/do/sd/sid=1144&type=0>

# PTC<sup>®</sup> Live Global

[liveglobal.ptc.com](http://liveglobal.ptc.com)

PTC<sup>®</sup> PRODUCT & SERVICE  
ADVANTAGE<sup>®</sup>

## Random Topics

- Scripted Uninstall of Creo
- VirtualBox – The admin's friend
  - I use this to do test installs, and to troubleshoot scripts*
- Disabling Creoagent & Thumbviewer
  - I do this on diskless systems with no internet connectivity*
- PDF Export Profiles
- Items no longer controlled by layers
- Config option meaning 180°
- Creo Stability Issues
- Creoagent & Learning Connector
- CreoView Version Checker

## Removing Creo from a system using a script

1. `rem ** Remove the Creoagent, for m010, m020, m030, m040, & m050`
2. `wmic product where name="Creo Platform 2.09" call uninstall`
3. `wmic product where name="Creo Platform 2.10" call uninstall`
4. `wmic product where name="Creo Platform 2.11" call uninstall`
5. `wmic product where name="Creo Platform 2.15" call uninstall`
6. `wmic product where name="Creo Platform 2.19" call uninstall`

Every time you install Creo on a system you get a new version of the `creoagent`. WMIC is Windows Management Instrumentation Command-line, and it provides a simple way to uninstall software. I use it whenever I can in this script.

7. `rem ** Remove Creo View`
8. `wmic product where name="Creo View 2.0" call uninstall`
9. `rem ** Remove CreoView Express`
10. `msiexec /uninstall "C:\ptc\Creo 2.0\Common Files\M050\install\addon\pvx32\pvexpress\CreoView_Express_32.msi" /passive`
11. `rem ** Waiting 30 seconds`
12. `timeout /T 30 /NOBREAK`

The reason we need to wait here is because the `msiexec.exe` program is not a command prompt program, so it runs asynchronously from the command prompt. This means that your script will fire off the first uninstall command, and then just move to the next one before the first uninstall has completed. This causes errors and results in an incomplete uninstall.

# Uninstalling Creo (continued)

- 13. rem \*\* Remove the Thumbviewer
- 14. msiexec /uninstall "C:\ptc\Creo 2.0\Common Files\m050\install\addon\Thumbviewer\_32\_64.msi" /passive
  
- 15. rem \*\* Waiting 30 seconds
- 16. timeout /T 30 /NOBREAK

Creoview Express and Thumbviewer are both dependent on .msi's that are down in the "Common Files" load point of Creo. If you uninstall Creo before uninstalling these, you will be unable to uninstall via the command line.

- 17. rem \*\* Uninstall Creo. Uninstalling the last app referencing the Common Files folder removes it automatically
- 18. "C:\ptc\Creo 2.0\Simulate\bin\uninstall.exe" -quiet
  
- 19. rem \*\* Waiting 90 seconds
- 20. timeout /T 90 /NOBREAK
  
- 21. "C:\ptc\Creo 2.0\Parametric\bin\uninstall.exe" -quiet
  
- 22. rem \*\* Waiting 90 seconds
- 23. timeout /T 90 /NOBREAK
  
- 24. "C:\ptc\Creo 2.0\Help\bin\uninstall.exe" -quiet
  
- 25. rem \*\* Waiting 90 seconds
- 26. timeout /T 90 /NOBREAK

# Uninstalling Creo (continued)

27. rem \*\* Remove other Software installed with CreoView express
28. wmic product where name="Arbortext IsoView 7.3" call uninstall
29. wmic product where name="Microsoft Visual C++ 2010 x64 Redistributable - 10.0.30319" call uninstall
30. wmic product where name="Microsoft Visual C++ 2010 x86 Redistributable - 10.0.30319" call uninstall
31. wmic product where name="Microsoft Visual C++ 2008 Redistributable - x86 9.0.30729.17" call uninstall
32. wmic product where name="Microsoft Visual C++ 2008 Redistributable - x64 9.0.30729.17" call uninstall

Once again I use the wmic command to uninstall these components.

In order to find out the "Name" of a program type the following command:

```
wmic product get name
```

This will return a list like this: (it can take a long time to return the information if you have a lot installed)

```
Mathcad Mechanical Engineering Library  
Mathcad Electrical Engineering Library  
Mathcad Civil Engineering Library  
Microsoft Office Professional Plus 2010  
Microsoft Office OneNote MUI (English) 2010  
Microsoft Office InfoPath MUI (English) 2010  
Microsoft Office Access MUI (English) 2010  
Microsoft Office Shared Setup Metadata MUI (English) 2010  
Microsoft Office Excel MUI (English) 2010  
Microsoft Office Shared 64-bit Setup Metadata MUI (English) 2010  
Microsoft Office Access Setup Metadata MUI (English) 2010  
Microsoft Office PowerPoint MUI (English) 2010  
Etc...
```

Any of these names can be uninstalled by placing the full name in between the quotes in the following command

```
wmic product where name=" " call uninstall
```

Free VM Software from Oracle

<https://www.virtualbox.org/>

You'll need

- Virtualbox software
- Windows .iso

SW\_DVD5\_SA\_Win\_Ent\_7w\_SP1\_64BIT\_English\_-2\_MLF\_X17-58882.ISO

Virtual Box Tips:

Accessing Folders on the host machine from the VM.

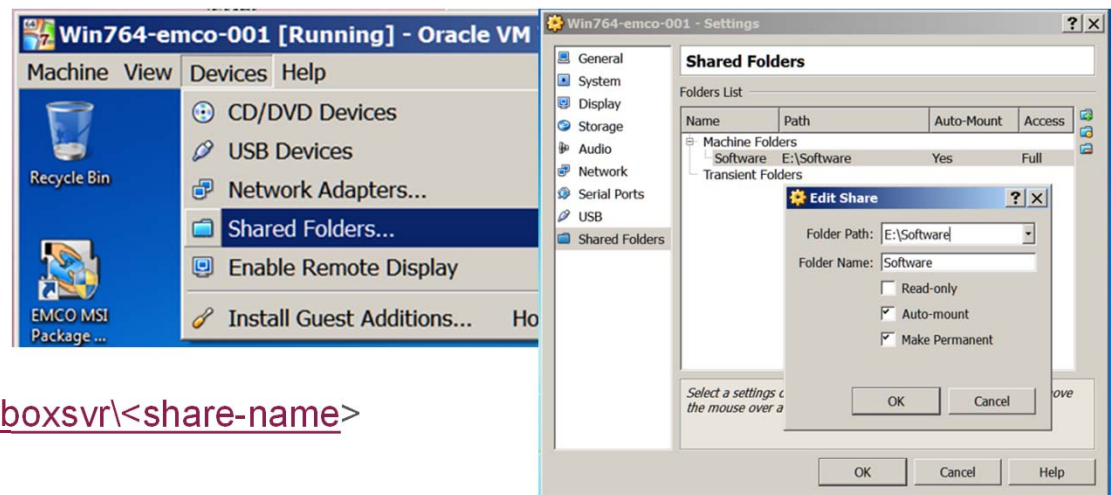
Guest services must be installed first.

Reboot after install.

Next, Make sure you share out the folder you plan to use. Grant yourself full control because you will want to move files both directions.

Make the folder available under Devices inside of virtualBox

Finally, map the drive using this syntax, `\\vboxsvr\<share-name>`





# VirtualBox (continued)

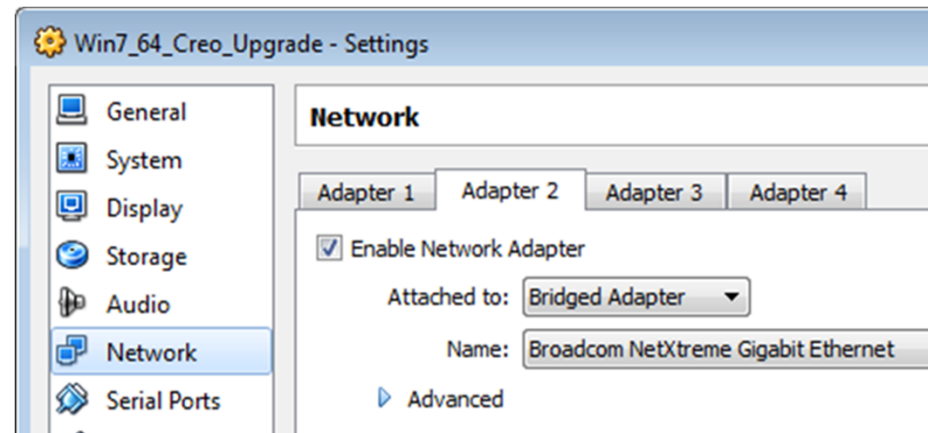
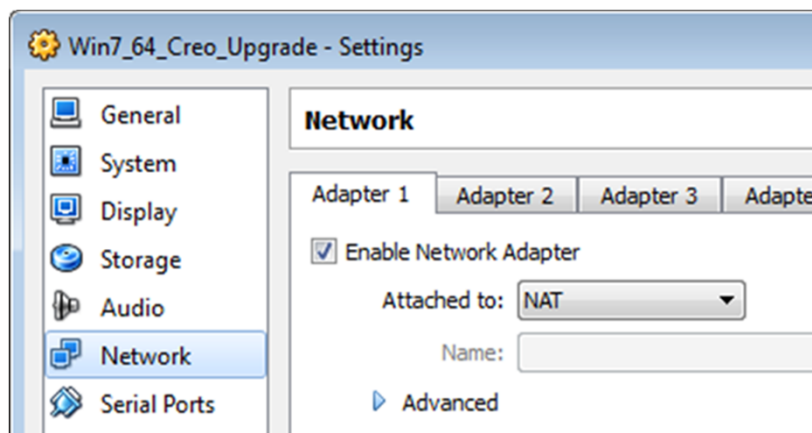
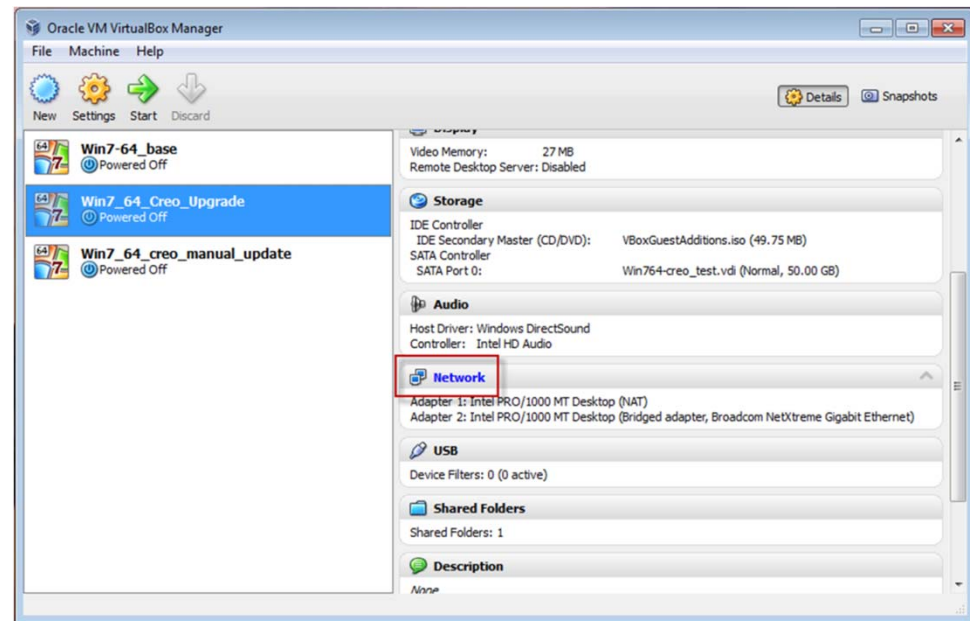
## Network Adaptors

Just like a real computer the VM cannot be running when you install network adapters.

Select the VM you want to add the network adapters to, and then pick on the network link

For Adapter 1, pick **Enable Network Adapter**.  
And set “Attached to:” to **NAT**.

For Adapter 2, pick **Enable Network Adapter**.  
And set “Attached to:” to **Bridged Adapter**.



## Clone machines onto a different drive

If you want the VM's drive on a disk other than C: do the following:

- Open a command shell:
- `cd "C:\Program Files\Oracle\VirtualBox"`
- `vboxmanage clonevdi "C:\Users\\VirtualBox VMs\Win7-64_base\Win7-64_base.vdi" "E:\virtual_machines\Win764-Creo-m050.vdi"`

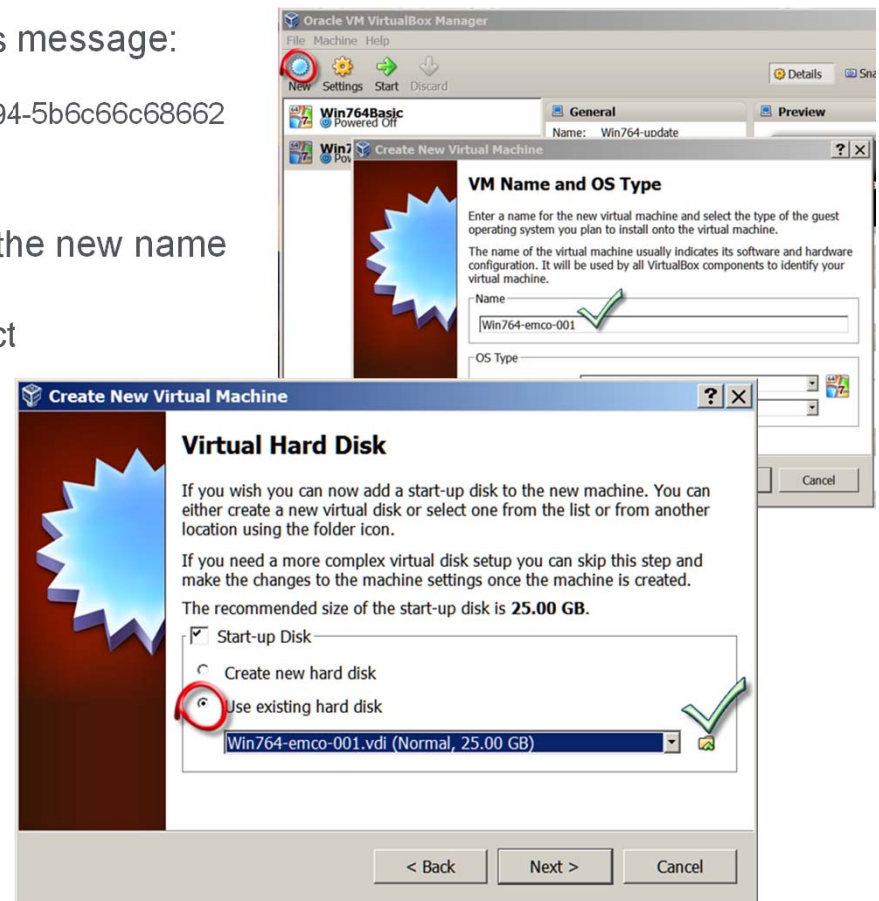
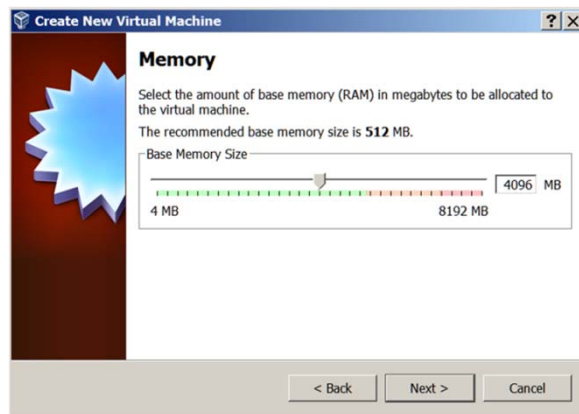
The clone is complete when you get to 100% and get this message:

0%...10%...20%...30%...40%...50%...60%...70%...80%...90%...100%

Clone hard disk created in format 'VDI'. UUID: 7a3b6995-b393-4bb3-bb94-5b6c66c68662

## Creating a new VM using the cloned disk image

- Open the VirtualBox Manager and click “New”, enter the new name
- Select the amount of Ram to allocate to the vm
- When you get to the “Virtual Hard Disk” section, select “Use existing hard disk” and then browse to the **NEW** .vdi file.



## Resize a drive

If you want to resize the VM's drive do the following:

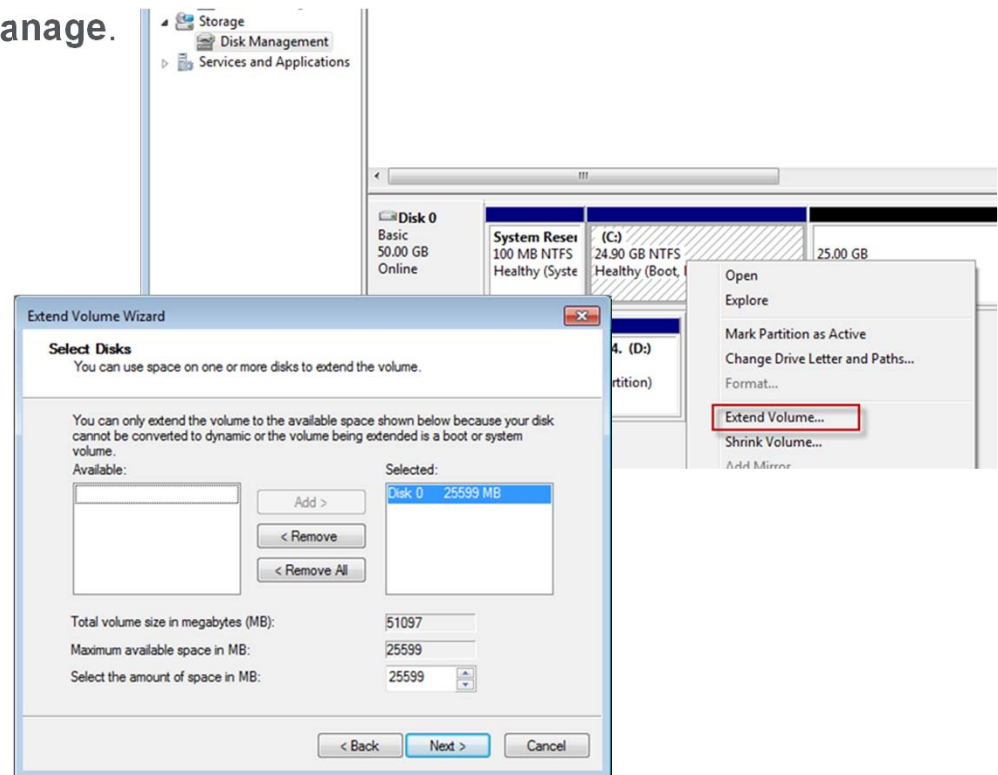
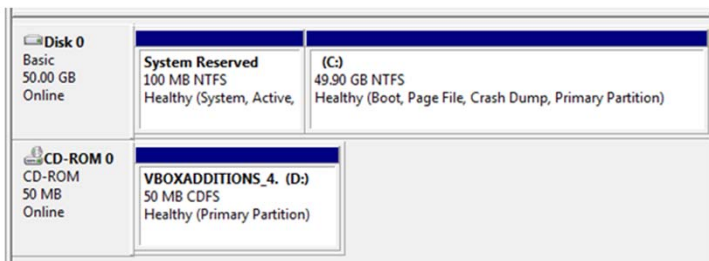
- Open a command shell: (*resizing to 50gb*)
- `cd "C:\Program Files\Oracle\VirtualBox"`
- `C:\Program Files\Oracle\VirtualBox>VBoxManage modifyhdd E:\virtual_machines\Win764-update.vdi --resize 51200`

Then fire up the VM and go to **My Computer, Manage**.

Under Disk Management, select Extend drive from the RMB menu over the boot partition, and then pick Next in the dialog box

In the Extend Volume Wizard, it will default to wanting to fill up the rest of the volume

Pick Next, and Finish, the system should now show the full partition used up

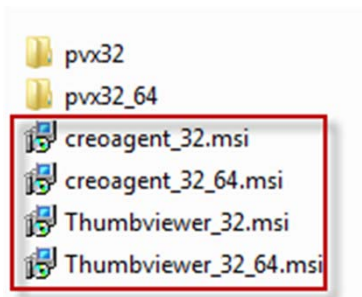


# Disabling Creoagent & Thumbviewer

Renaming the .msi files prevents Creo from trying to install them

<loadpoint>\Creo 2.0\Common Files\M<xxx>\install\addon

Rename these files:



For Example

No\_creoagent\_32.msi

No\_creoagent\_32\_64.msi

No\_Thumbviewer\_32.msi

No\_Thumbviewer\_32\_64.msi

Disabling the creoagent causes Creo to forget the last workspace used. The work around is to replace the <local cache>\.Settings\active\_server\_config.fld with <local cache>\.Settings\config.fld in your startup script. Like this:

- Del "%USERPROFILE%\creo\_2\_home\cache\PDMLink\_cache\PTC\ProENGINEER\.Settings\active\_server\_config.fld"
- Echo f|xcopy "%USERPROFILE%\creo\_2\_home\cache\PDMLink\_cache\PTC\ProENGINEER \.Settings\config.fld" "%USERPROFILE%\creo\_2\_home\cache\PDMLink\_cache\PTC\ProENGINEER \.Settings\active\_server\_config.fld"

## Mapkeys and PDF Export

I was unable to write a mapkey that worked consistently for PDF Export without saving a profile and calling it in the mapkey

Saves a .dop file to the working or start-in dir

Add this to the config.pro

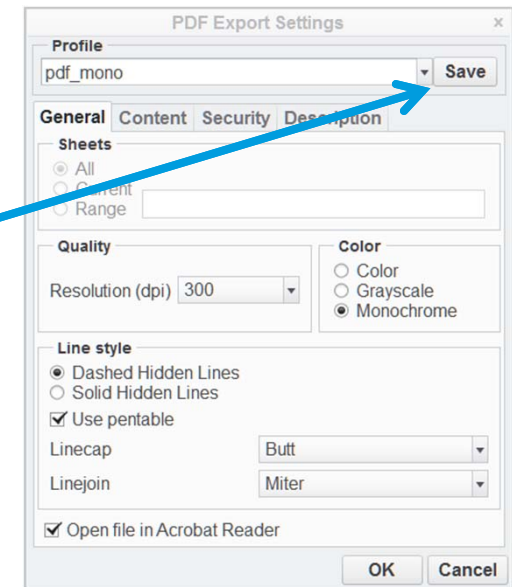
```
intf_profile_dir P:\pro_lib\interface_profiles
```

Save the .dop files in that directory

```
mapkey .pdfm @MAPKEY_LABELPDF Mono;\
~ Activate `main_dlg_cur` `page_View_control_btn` 1;\
~ Command `ProCmdViewRefit` `%.penm`;\
~ Command `ProCmdExportPreview` `;\
~ Command `ProCmdDwgPubSettings` `;\
~ Open `intf_profile` `opt_profile`;\
~ Select `intf_profile` `opt_profile` 1 `pdf_mono`;\
~ Activate `intf_profile` `OkPshBtn`;\
~ Command `ProCmdDwgPubExport` `;\
~ Activate `file_saveas` `Current Dir`;\
~ Activate `file_saveas` `SAB_..`;\
~ Activate `file_saveas` `ph_list.Filelist` 1 `plot_files`;\
~ Activate `file_saveas` `OK`;\
~ Activate `UI Message Dialog` `ok`;\
~ Activate `main_dlg_cur` `main_dlg_cur`;\
~ Activate `main_dlg_cur` `main_dlg_cur`;\
~ Command `ProCmdDwgPubCloseExportPvw`;
```

Loads different pen file

Name of .dop file



See this file for more information:

<https://www.ptc.com/appserver/cs/view/solution.jsp?n=CS31414>

Layers no longer control the display of:

Notes

Gtols

Symbols

No point in layering those items

Config option meaning change

“**Show\_preview\_default**” settings “**Keep**” and “**Remove**” were reversed in meaning

Keep used to mean “select to keep”,

Keep now means “keep everything”, you have to select to remove

## Creo Stability issues

### Graphics Drivers

Drivers that may have worked fine in Wildfire 4 cause issues in Creo.

Had to update a number of computers after going live

### 64bit Windows, run IE separate process

Microsoft did not update the java in IE9 64bit, you should use the option

windows\_browser\_type ie\_in\_sep\_process

to run the 32bit version of IE in the embedded browser

### Social Link

Turn off social link in Croe

enable\_sociaLink NO

### Background upload

m030 would hang if you pick File, Checkin

while background upload was still in process.

Fixed in m050.

### Internet browser history setting

Set “Check for newer versions of stored pages:” to

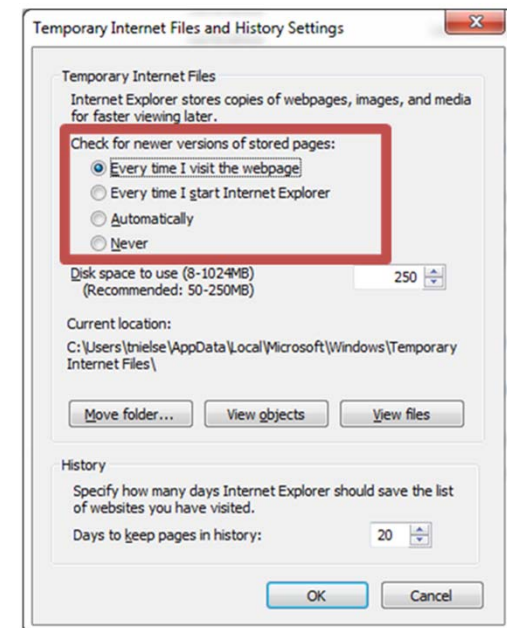
“Every time I visit the webpage”

### Old config files

Users grabbing their old config file to use in Creo caused many stability issues.

Using the new config editor to add options, cause many to duplicate the entire session config into their personal config.

My suggestion, use the editor to find the option, then enter it manually.



A few of our users were getting a warning when running the Creo startup script from the server:

Open File – Security Warning

The publisher could not be verified

Are you sure you want to run this software?

To disable the messages do the following:

1. Go to Start, Run

2. Type INETCPL.CPL

3. Go to the Security tab, Local Intranet

4. Click the Sites button

**If necessary pick the Advanced button**

5. Type the UNC path to your script or executable. For instance, \\<servername>\<sharename>\<path>\\*.\*

6 Click the Add button



The Creoagent has to be installed in the default location  
The install guide shows how to install in a custom location  
However, it doesn't run when installed that way, and you will  
not get the learning connector icon in Creo



# ProductView Version Checker

ProductView version check warning pops up when you look at the information page. Popping up even though client version is newer.

Pick Don't Install and CreoView works as expected.

This is what PTC has to say about this: see CS27008,CS62951,& CS31709

## The pvvercheck\_ie.ocx ActiveX:

- This is a small program used for checking that the currently installed client release and datecode is not older than the one available for installation from the Windchill Server
- Launches the client upgrade prompt when a newer release is available
- Only installed by automatic download from the Windchill server through a file called **pvvercheck\_ie.cab** located in platform specific sub-folders **i486\_nt\_ie** and **x86e\_win64\_ie** under the **<WT\_HOME>\codebase\wtcore\jsp\jsp\download** folder
- **This is not vital for displaying 3D Thumbnails in most cases**

## Workaround:

It is possible to prevent any attempt to install the ProductView Version Checker by renaming or deleting the folder on the Windchill server where the source pvvercheck\_ie.cab file resides

The result is that the Windchill JSP will not prompt the user if there is no CAB file to install from

To implement this workaround

1. Navigate to **<Windchill>\codebase\wtcore\jsp\wvs\download** on your Windchill server
2. Rename or delete the following sub-folders:  
**i486\_nt\_ie** and **x86e\_win64\_ie** - for Internet Explorer users  
**i486\_nt\_ns** - for Mozilla Firefox users

