

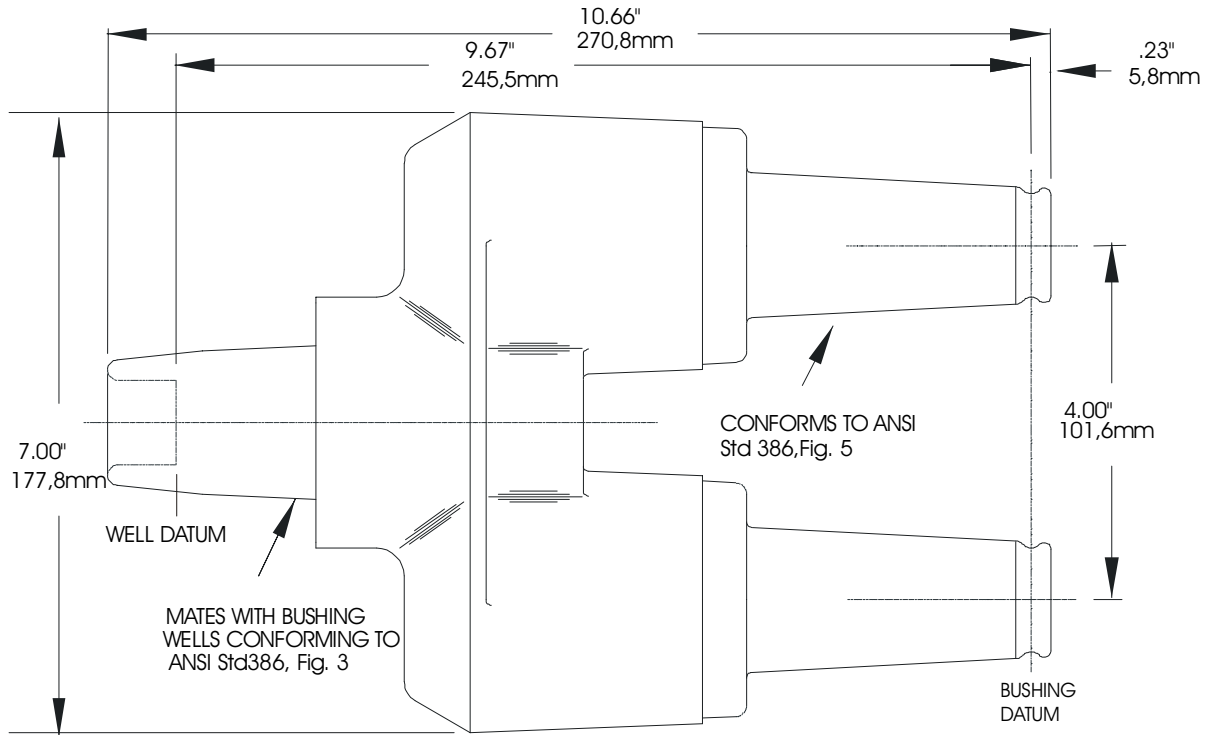


PRODUCT SPECIFICATION SHEET

DESCRIPTION

15kV 200A Loadbreak Feed-Thru Insert

ELASTIMOLD PART NUMBER

1602A3R

The Elastimold 1602A3R feed-thru bushing insert is fully rated with a 15kV class, 200 Amp load break bushing interface. The feed-thru bushing insert fits a standard ANSI bushing well interface and provides the capability of creating a tap position in an existing apparatus installation and transforming a radial-feed transformer into a loop-feed unit.

Features

- Transform radial feed transformer into loop-feed unit.
- Provide extra tap for elbow arrester connection
- 15kV, 200 Amp loadbreak rated.
- Peroxide-cured insulation and jacket.

Ordering Instructions:

To order, specify number **1602A3R** bushing insert.

The 1602A3R bushing insert includes the following:

- | | |
|------------------------------|---------------------|
| 1 – Bushing insert | 1602A3R |
| 2 – Protective shipping cap | 1601-APC-1 |
| 1 – Bail assembly | 2702-16 |
| 3 – Lubricant | 82-08 |
| 1 – Installation instruction | IS-1602A3R (C) 1/81 |

Ratings

per ANSI/IEEE Standard 386

15kV Voltage Class

8.3kV Max Phase-to-Ground - Operating Voltage

14.4kV Max Phase-to-Phase

95kV BIL - Impulse Withstand (1.2 x 50 microsecond wave)

34kV AC - One minute Withstand

53kV DC - 15 Minutes Withstand

11kV AC - Corona Extinction @ 3p.C.sensitivity

200 Amp - Continuous and Loadbreak

10kA Sym - 10 Cycles Momentary & Fault Close

Applications

It may be used as the bushing interface for connecting shielded cable to the following:

- | | |
|----------------------------|--------------|
| * Sub-surface transformers | * Generators |
| * Pad mounted transformers | * Switchgear |
| * Regulators | * Reclosers |

Designed for use as an apparatus bushing interface and provide extra tap connection, the 1602A3R is easily installed in an ELASTIMOLD universal bushing well and mated with an appropriate ELASTIMOLD product.

IMPORTANT:

Read instructions thoroughly and completely prior to beginning installation.

Installation Instructions 1602A3R Loadbreak Feed-Thru Insert

CONTENTS: 1— Loadbreak feed-thru insert, 1— Stainless steel plate, 2— Stainless steel hook bolts, 2— Stainless steel wing nuts, 3— Tubes lubricant, 3— Wiping cloths, 1— Installation instructions.

The 1602A3R is designed to provide the apparatus interface and loop feed-thru for Elastimold 15kV class (8.3kV phase-to-ground and 14.4kV phase-to-phase) loadbreak connectors.

DANGER

All apparatus must be de-energized during installation or removal of part(s) to avoid fatal shock.

Inspect parts for damage, ratings and compatibility with mating parts.

The product should be installed only by competent personnel familiar with good safety practices in handling high-voltage electrical equipment.

These instructions are not intended as a substitute for adequate training or experience in such good safety practices.

These instructions do not attempt to provide for every possible contingency.

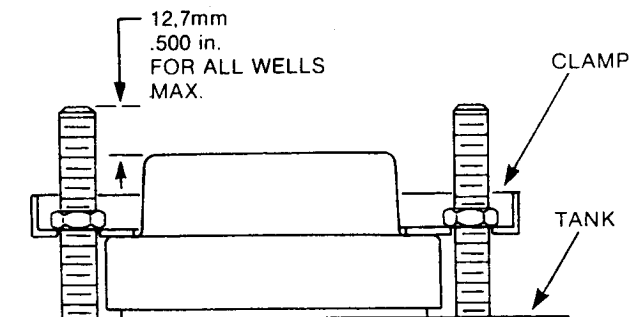
Install according to the following instructions.

Do not energize or submerge apparatus with shipping cap on bushing(s).

FOR MORE INFORMATION ON PARTS, INSTALLATION RATINGS AND COMPATIBILITY, CALL THE NEAREST ELASTIMOLD OFFICE.

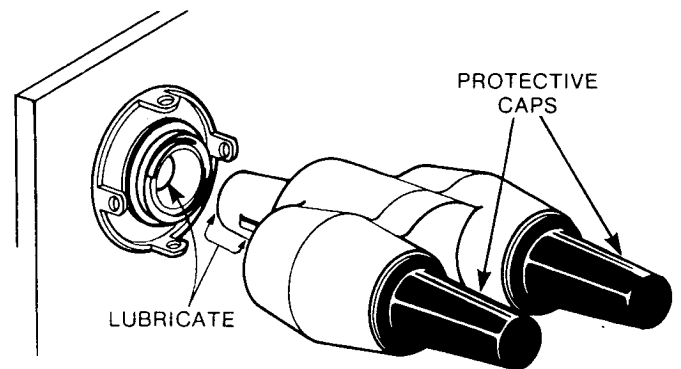
STEP 1

When installing a 1602A3R feed-thru insert in a clampable apparatus bushing well, check the height of the mounting bolts. Hardware which protrudes more than 1/2" (12mm) above the top of the apparatus bushing well will prevent the feed-thru insert from being assembled. If this condition exists, consult with apparatus manufacturer on proper method to shorten bolts.



STEP 2

Inspect the apparatus bushing well to ensure it is dry and free from all contaminants. Lubricate the bushing well interface and cuff area of the feed-thru insert with the supplied lubricant or ELASTIMOLD approved lubricant. DO NOT SUBSTITUTE. Other lubricants may be harmful to this product and its mating parts.



WARRANTY

The following is given by the ELASTIMOLD DIVISION of AMERACE CORPORATION in lieu of all other warranties, express or implied:

ELASTIMOLD® Products will perform within the recommended operational ratings when installed and operated in accordance with applicable instructions. ELASTIMOLD's liability is limited to replacement of the component parts designed and manufactured by ELASTIMOLD which are proved to be defective in workmanship or material. All statements, technical information and recommendations contained herein are based on tests believed to be reliable, but the accuracy or completeness thereof is not guaranteed. In adjustment of any claims, inspection of the parts and application will be required. This warranty is effective for two (2) years from date of shipment by ELASTIMOLD, but at no time will ELASTIMOLD be liable for incidental or consequential damages.

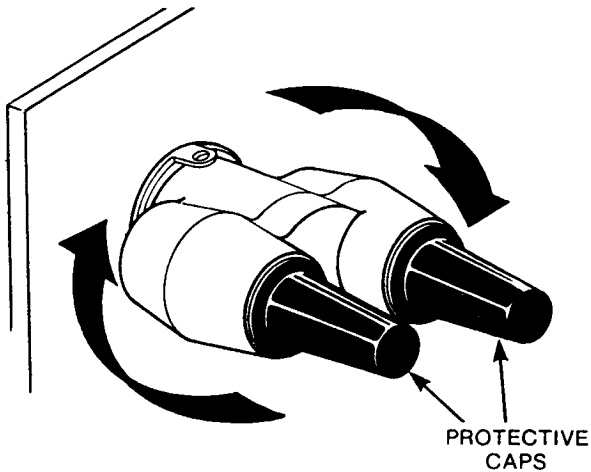


**ELASTIMOLD
DIVISION**

AMERACE CORPORATION, ESNA PARK
HACKETTSTOWN, NEW JERSEY, U.S.A. 07840, (201) 852-1122

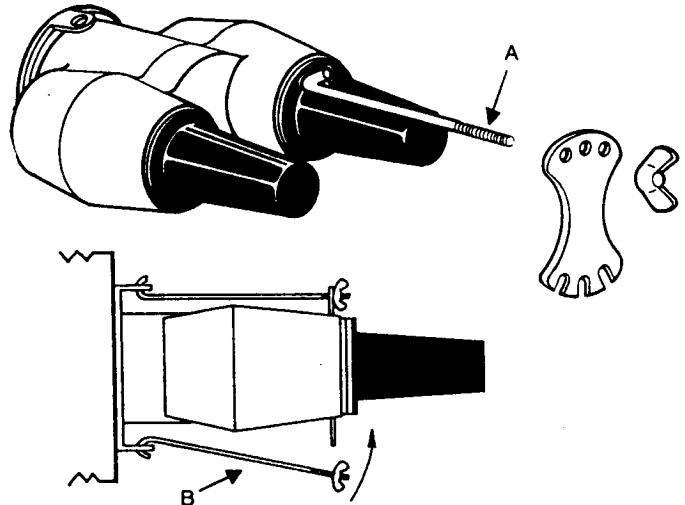
STEP 3

Place the lubricated portion of the feed-thru insert in the apparatus bushing well and rotate feed-thru insert clockwise until fully seated. **DO NOT FORCE.** Overtightening may damage threads of bushing well. The feed-thru insert has been designed with a special 180° adjustment feature. Feed-thru insert may now be rotated counter-clockwise up to a half turn to obtain desired alignment. A definite stop will be felt at the end of the 180° adjustment range.



STEP 4

Assemble "A" hook bolt in available upper bushing well tab. Assemble plate over threaded end of bolt. Use hole in plate which allows the most vertical position of hook bolt. Assemble wing nut. Assemble "B" hook bolt and wing nut. Engage hook of hook bolt into lower bushing well tab. Swing hook bolt up into slot of plate, using slot which allows the most vertical position of hook bolt. Tighten wing nuts securely by hand.

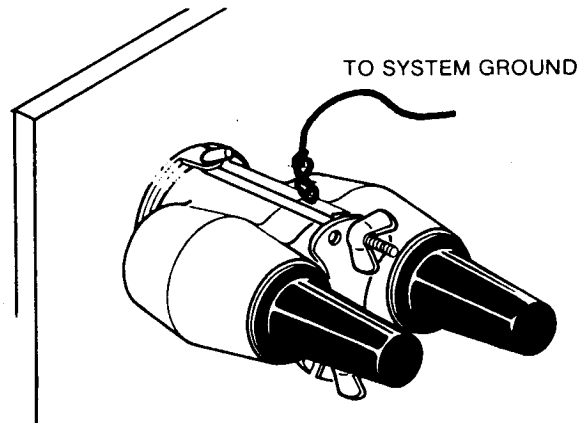


STEP 5

Push a length of copper wire, No. 14 AWG (2.5mm²) or equivalent, through one of the grounding holes on the feed-thru insert. Make a small loop and twist tightly, taking care not to damage the conductive shield. Connect free end of the wire to the system ground using a suitable connector.

The electrostatic grounding wire should be installed in such a manner so as not to contact the bushing interface or adjacent bushing interfaces or interfere with the placement of accessories on nearby parking stands.

This step provides assurance that the conductive shield on the feed-thru insert is grounded.



STEP 6

Remove protective shipping caps from feed-thru insert. Thoroughly wipe the bushing interfaces clean of any contaminants and lubricate with the supplied lubricant or ELASTIMOLD approved lubricant. **DO NOT SUBSTITUTE.** Other lubricants may be harmful to this product or its mating parts. *Install the mating products to the feed-thru insert following the instructions supplied with the mating products.*

If feed-thru insert is not to be immediately mated with elbow connector(s) and/or insulated cap(s) and/or grounding elbow(s), do not remove shipping caps. DO NOT ENERGIZE OR SUBMERGE APPARATUS WITH SHIPPING CAPS ON THE FEED-THRU INSERT. This is a protective cap only which is not insulated or water tight and only intended to keep the bushing plug surfaces clean during handling and installation.

