

Fig. 1. Solid model of initial propellant grain and propellant grain after several burn steps.

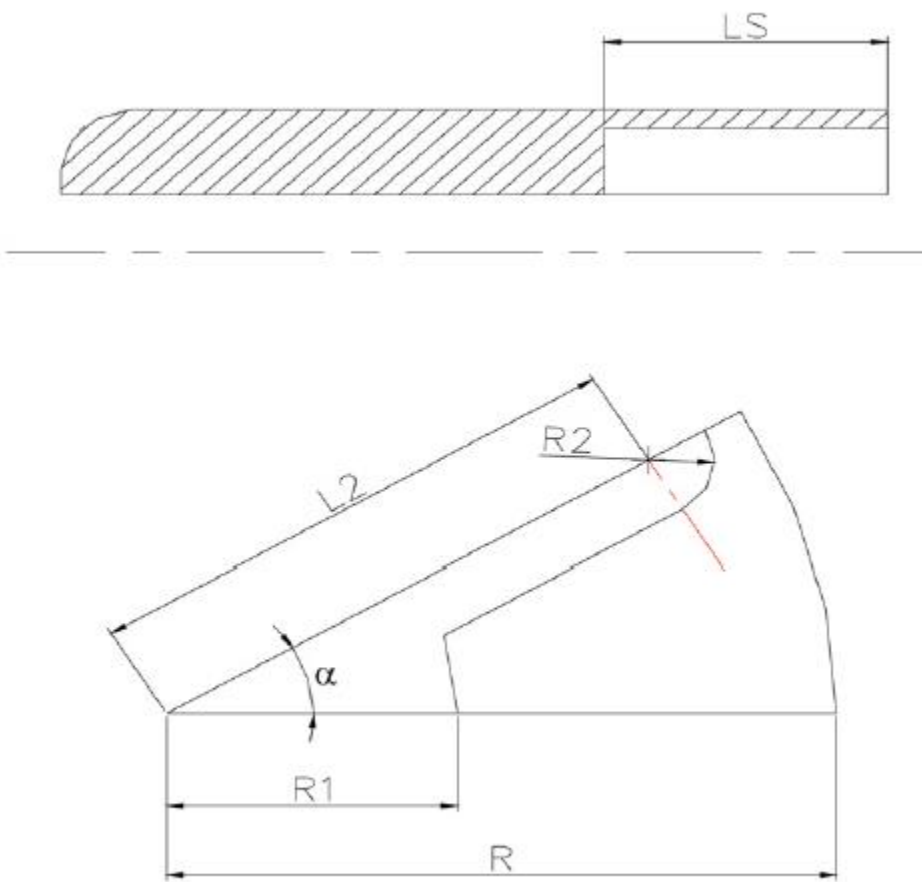


Fig. 2. Parameters of finocyl geometry.

Table 1  
Analyzed geometries

Case #	N	R1 (mm)	R2 (mm)	L2 (mm)	LS (mm)	Case #	N	R1 (mm)	R2 (mm)	L2 (mm)	LS (mm)
1	4	15	5	20	30	14	8	15	2	30	30
2	4	15	2	20	30	15	8	15	5	25	30
3	4	15	3.5	20	30	16	4	15	2	30	30
4	6	15	2	20	30	17	8	12	2	27	30
5	8	15	2	20	30	18	4	13	2	27	30
6	10	15	2	20	30	19	8	13	2	20	75
7	12	15	2	20	30	20	4	15	3	25	120
8	4	15	1	20	30	21	8	15	3	25	75
9	8	15	1	20	30	22	8	15	3	20	75
10	12	15	1	20	30	23	8	15	3	25	50
11	8	15	1	25	30	24	8	12	3	25	50
12	8	15	1	30	30	25	12	15	1	30	30
13	8	15	2	25	30						

