

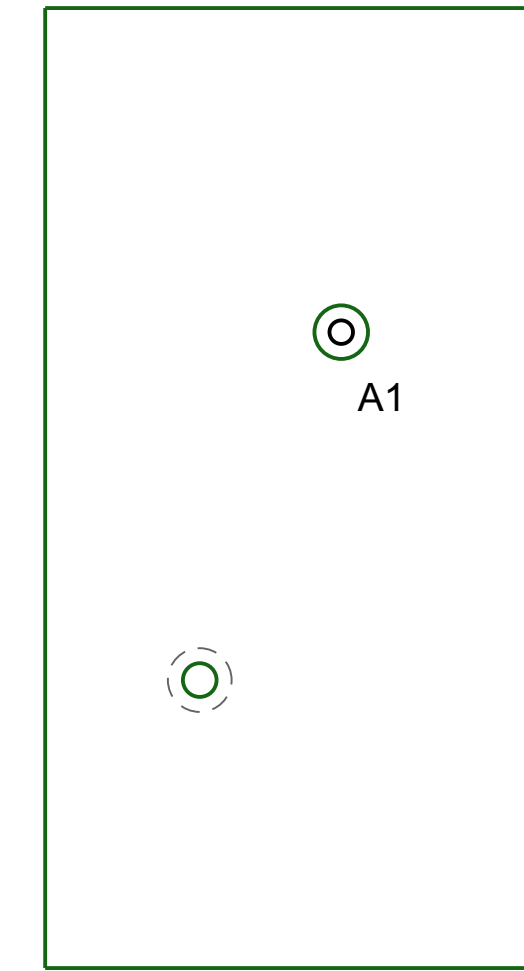
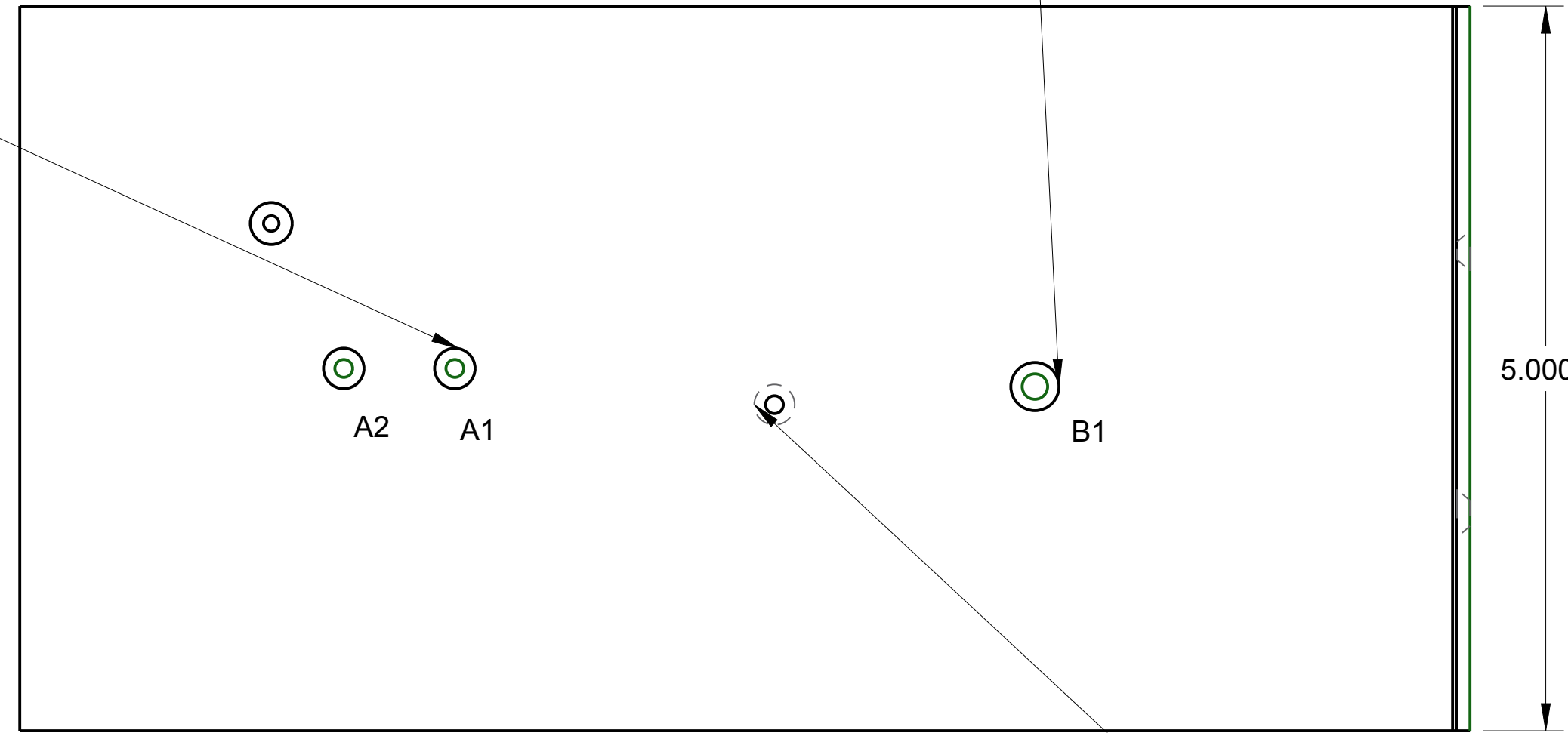
PROPRIETARY NOTICE: The information contained herein is proprietary and may not be used or disclosed in any way without the express written permission of SIE COMPUTING SOLUTIONS, INC.

REVISIONS			
SYM	DESCRIPTION	DATE	APPR
A	DWO EXXXXX RELEASED	-	-

6-32 UNC - 2B TAP ∇ 0.256
#36 DRILL (0.107) THRU -(2) HOLE

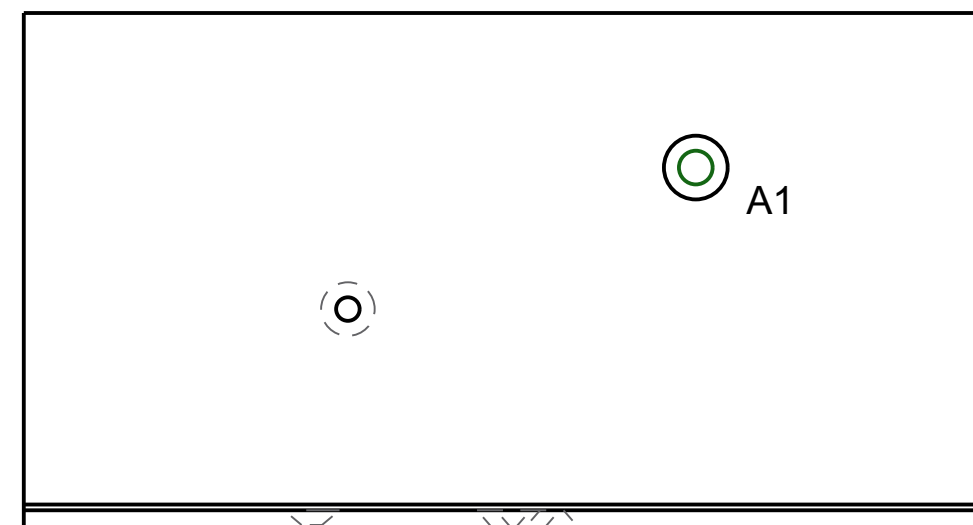
8-32 UNC - 2B TAP ∇ 0.326
#29 DRILL (0.136) THRU -(1) HOLE

6-32 UNC - 2B TAP ∇ 0.256
#36 DRILL (0.107) THRU -(1) HOLE

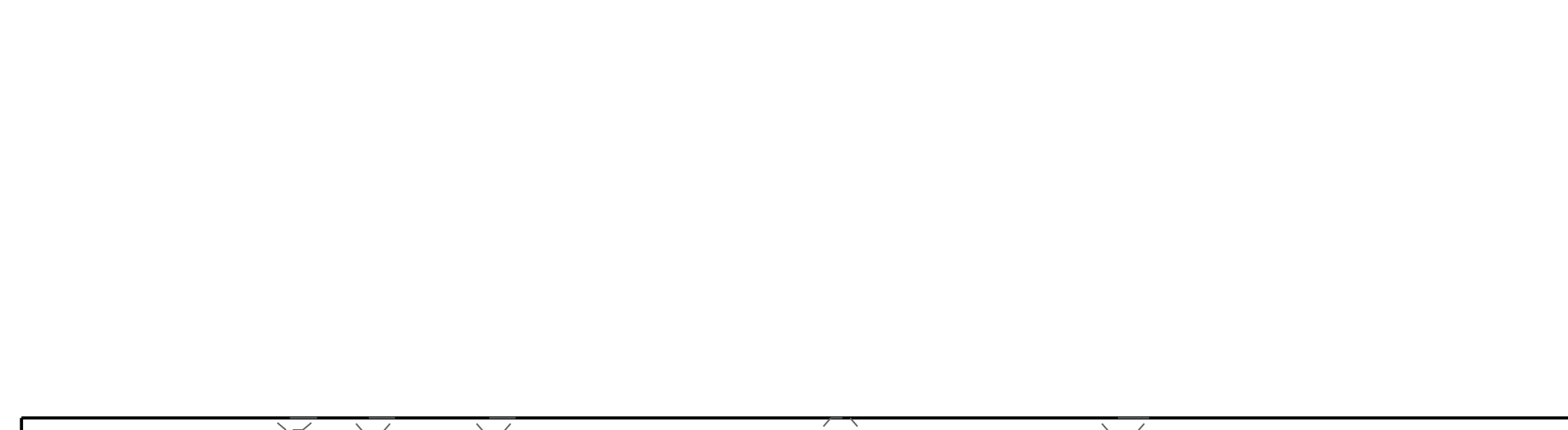


Hole Chart #1			
Hole No.	DRILL_DIAMETER	CSINK_DIAMETER	CSINK_ANGLE
A1	0.107	0.279	82.000
A2	0.107	0.279	82.000
B1	0.136	0.332	82.000

Hole Chart #2	
Hole No.	Ø
A1	6-32 UNC



Hole Chart #3	
Hole No.	Ø
A1	8-32 UNC



Hole Chart #4	
Hole No.	Ø
A1	6-32 UNC

6-32 UNC - 2B TAP ∇ 0.256 #36 DRILL (0.107) THRU -(1) HOLE
8-32 UNC - 2B TAP ∇ 0.326 #29 DRILL (0.136) THRU -(1) HOLE
6-32 UNC - 2B TAP ∇ 0.256 #36 DRILL (0.107) THRU -(2) HOLE

TABLE II	
DASH NO.	FINISH SELECTION
-20	ZINC PLATING WITH SUPPLEMENTARY CLEAR CHROMATE PER QQ-Z-325
-31	CLEAR CHROMATE PER MIL-C-5541, CL3
-00	NO FINISH REQUIRED
-YYY	SEE NOTE 5

TABLE III		
HOLE	QTY.	DESCRIPTION
A	18	INSTALL PENN ENG. P/N FEX-632 F.S. REQ'S Ø.213-.216 THRU
B	68	Ø.169-.174 THRU Ø.284-.294 X 100° N.S.
C	1	Ø.327-.334 THRU
D	2	Ø.266 THRU Ø.438 ∇ .250
NONE	333	.125 X 1.625 OBROUND SLOT

TABLE I	
DASH NO.	ITEM DESCRIPTION
-01	AS SHOWN

-04	-03	-02	-01	ITEM NO	PART NUMBER	DESCRIPTION
LIST OF MATERIALS						
QUANTITY				DESCRIPTION		
1				INTERPRET DRAWING PER ANSI Y14.5M-1982 UNLESS OTHERWISE SPECIFIED DIMENSIONS ARE IN INCHES		
2				TOLERANCES:		
3				FRAC DECIMAL ANGLE		
4				X .XX XXX		
5				± - ± ± .01 ± .005 ± 0° 30'		
6				MATERIAL: SEE NOTE 1		
7				FINISH: SEE TABLE II		
8				TITLE SIGNATURE DATE		
9				DFTSM AS 2-27-15		
10				CHECK - - -		
11				PR.ENG - - -		
12				M.ENG - - -		
13				E.ENG - - -		
14				APPR - - -		
15				SIZE CODE IDENT NO. DRAWING NO. REV		
16				DRAWING SCALE REL SHEET <SHEET NUMBER> OF TOTAL SH		
17				THIS IS A Pro/E GENERATED DOCUMENT FRM-73-01-09 REV A		