

Unite Technology

A Ground-Breaking Approach to Addressing the Challenges of Working in a Multi-CAD Environment

PTC Creo® with *Unite* technology provides users with breakthrough capabilities to improve productivity in multi-CAD environments. By allowing users to consolidate CAD systems and collaborate more effectively across systems, design teams will experience new efficiencies allowing them to improve product quality, desirability, and on-time deliverability.

In today's multi-CAD design environment, working effectively with multiple CAD systems is a major challenge. *Unite* technology addresses these challenges by enabling users to import and open non-PTC Creo files, save data in non-PTC Creo formats, and create and maintain design intent across CAD platforms.

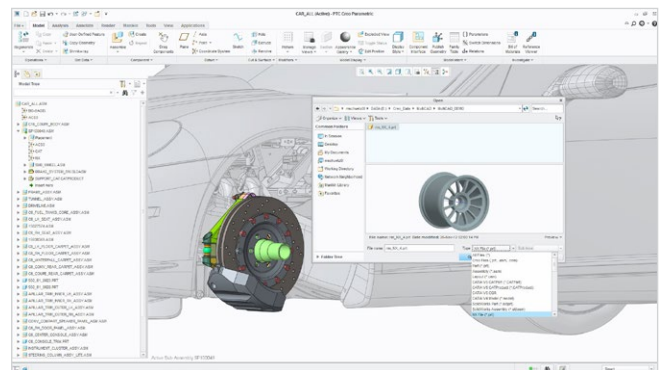
Consolidation

Organizations considering consolidating CAD systems face a number of challenges, including user adoption, training, and the cost of data migration. PTC Creo already provides product development companies with an easy-to-use product and a rich, embedded learning experience. Now, with *Unite* technology, organizations can cost-effectively address the challenges of data migration.

Users can now convert only the parts and parent assemblies needed, as opposed to an entire assembly. This greatly reduces the amount of time and effort spent on data migration.

Collaboration

Collaborating early and often across CAD platforms with partners is a challenge for most organizations. The manual effort required forces many of them to make significant compromises during the design



Open non-PTC Creo files directly into PTC Creo

process. *Unite* technology enables organizations to easily overcome this challenge, allowing users to work more efficiently with other internal stakeholders, suppliers, or development partners.

Key benefits

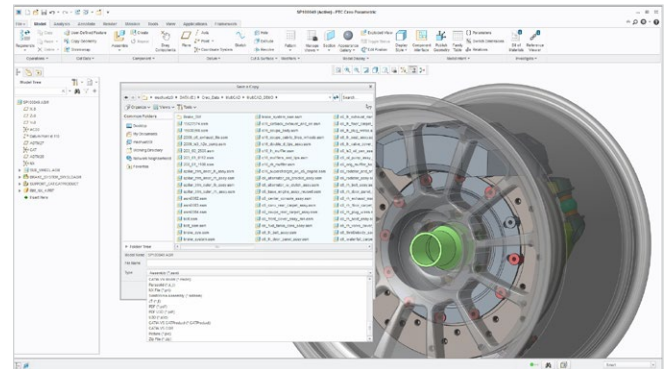
Consolidate to a single CAD system with ease

- Easily re-use legacy data
- Convert data “as needed, when needed”
 - Convert only the parts you need to change
- Reduce the number of CAD platforms and the associated costs of software licenses, support, and training

- Increase engineering productivity and IT efficiency
- Enable a “design anywhere, build anywhere” strategy

Collaborate effectively in a multi-CAD environment

- Enable higher levels of concurrent engineering
 - Easily incorporate non-PTC Creo data throughout the design process
 - Effortlessly manage changes to non-PTC Creo data
 - Protect design intent established between PTC Creo and non-PTC Creo data
 - Reduce the number and impact of late stage design changes
- Promote data re-use and sharing
- Support on-time product delivery
 - Ensure consistency and integrity is maintained through the design process
- Reduce the need to create and manage neutral formats
 - Exchange information in the most common 3D CAD formats



Save designs in CATIA, NX, or SolidWorks formats for easier exchange with partners

Capabilities and specifications:

Import

With *Unite* technology, users can convert data from other CAD systems such as Autodesk®, CATIA®, Siemens® NX™, SolidEdge®, and SolidWorks® (see table below for full list) into PTC Creo data.

Open

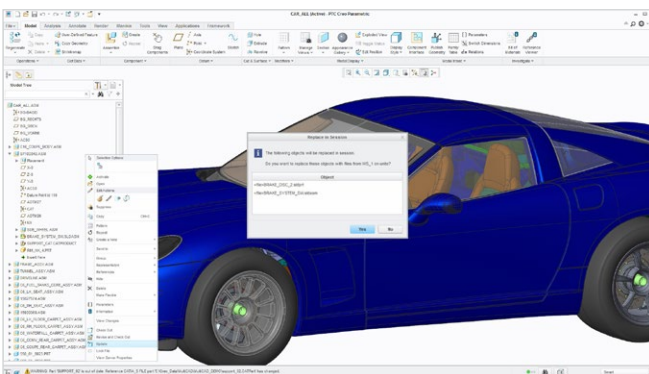
While other CAD systems allow you to import non-native files, only Unite technology’s open capabilities give users the ability to work with non-native data without any conversion effort. Users can now incorporate CATIA, Siemens NX, and SolidWorks data directly into their designs without creating additional business objects.

Update

When collaborating on designs, changes are an inevitable part of the process. The PTC Creo Collaboration Extensions ensure changes on imported or opened data are handled seamlessly.

Save as

With the PTC Creo Collaboration Extensions, designers can exchange PTC Creo models in the most common CAD formats (including CATIA, Siemens NX, and SolidWorks) without the presence of licenses from these software systems.



Create and maintain design intent with non-PTC Creo files

Your Data Sheet Says
it is intended and
supported.

Format	Import	Open	Update	Save As
CATIA V4	✓	✓	★	★
CATIA V5	✓	✓	★	★
Siemens NX / Unigraphics® NX	✓	✓	★	★
SolidWorks	✓	✓	★	★
JT	•			•
CADD5® 5	✓		✓	✓
PTC Creo Elements/ Direct®	✓		✓	
STEP	✓			✓
Autodesk Inventor™	✓			
Rhinoceros®	✓			
SolidEdge	✓			
AutoCAD® DXF™	✓			✓
AutoCAD Drawing	✓			✓

✓ = Supported in the base license of PTC Creo Parametric™

★ = PTC Creo Collaboration Extensions: PTC Creo Collaboration Extension for CATIA V4 (replacement for CATIA V4 w/ ATB license), PTC Creo Collaboration Extension for CATIA V5 (replacement for CATIA V5 w/ ATB license), PTC Creo Collaboration Extension for UG/NX (replacement for Unigraphics w/ATB license), PTC Creo Collaboration Extension for SolidWorks

• = PTC Creo Interface for JT

Language Support

English, German, French, Italian, Spanish Chinese (Simplified and Traditional), Japanese, Korean, and Russian

Platform support and system requirements

Please visit the [PTC support page](#) for the most up-to-date platform support and system requirements.

© 2014, PTC Inc. All rights reserved. Information described herein is furnished for informational use only, is subject to change without notice, and should not be taken as a guarantee, commitment, condition or offer by PTC. PTC, the PTC logo, Product & Service Advantage, Creo, Elements/Direct, Windchill, Mathcad, Arbortext, PTC Integrity, Servigistics, ThingWorx, ProductCloud and all other PTC product names and logos are trademarks or registered trademarks of PTC and/or its subsidiaries in the United States and other countries. All other product or company names are property of their respective owners.

J3814 – Unite Technology -DS – EN – 0514