
From: Pandhare, Swapnil [mailto:spandhare@ptc.com]
Sent: Monday, September 22, 2014 1:36 PM
To: sky king
Subject: RE: PTC Desktop Sharing Session for Case 12175340

Hi [sky king](#),

Product idea is something which needs to be filled by customer. Your product idea will be visible to other customers and they can hit like or comment on this so that it might be considered by product management team as an enhancement in future releases of Creo Parametric.

Thanks ,
Swapnil

From: sky king
Sent: 23 September 2014 02:02
To: Pandhare, Swapnil
Subject: RE: PTC Desktop Sharing Session for Case 12175340

It took me all this time to go thru you (PTC). It should be your (PTC) job to file a product idea. We pay good money for your (PTC) product.

From: Pandhare, Swapnil [mailto:spandhare@ptc.com]
Sent: Monday, September 22, 2014 1:20 PM
To: sky king
Subject: RE: PTC Desktop Sharing Session for Case 12175340

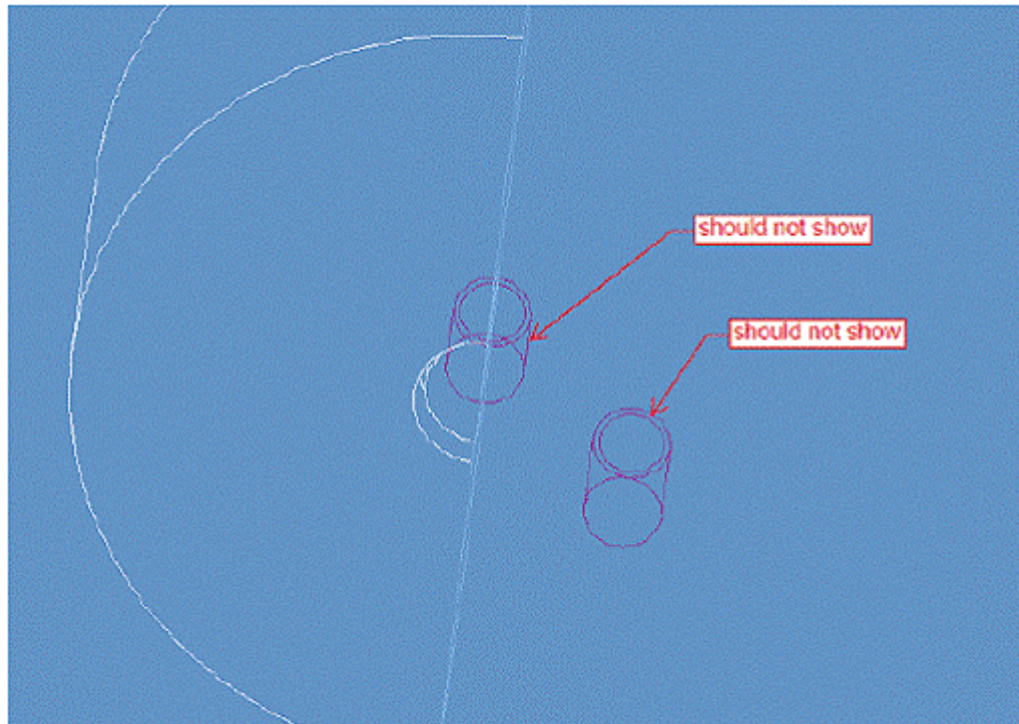
Hi sky king,

We cannot hide the display of the quilts which are not on the section plane. If the quilts are on section plane then we have an option to include/exclude them from the section. I would recommend you to file an [Product Idea](#) for this.

Thanks ,
Swapnil

From: sky king
Sent: 23 September 2014 01:44
To: Pandhare, Swapnil
Subject: RE: PTC Desktop Sharing Session for Case 12175340

I guess I was not clear. I got the drawing to work, I just needed to put "hlr_for_threads" back to default after you told me to set it to "no", that is why it didn't work when you told me to put "thread_standard" to "std_ansi_imp_assy". Other valve in "thread_standard" also works. Drawing is OK. What about the model? How do I not show thread on the un-sectioned side?



The description is meaningless. Not everybody has these standards to reference. The default should be changed, seems that “std_ansi” and “std_iso” is for drawings created before Pro/Engineer Release 15.0. All the other one works for Creo.

thread_standard

Controls the display of threaded holes with an axis perpendicular to the screen as an arc (ISO standard), or as a circle

Default and Available Settings

- **std_ansi***—Displays the threaded holes in accordance with the ANSI standard.
- **std_ansi_imp**—Does not display hidden thread lines when you select **No Hidden Line** from the **Display Style** list in the **Creo** **Line**, thread lines are displayed as leader lines (yellow).
- **std_ansi_imp_assy**—Displays threaded holes in accordance with the ANSI standard.
- **std_iso**—Displays threads in cross-sectional assembly drawings in accordance with the ISO 6410 standard.
- **std_iso_imp**—Does not display hidden thread lines when you select **No Hidden Line** from the **Display Style** list in the **Creo** **Line**, thread lines are displayed as leader lines (yellow).
- **std_iso_imp_assy**—Displays threads in cross-sectional assembly drawings in accordance with the ISO 6410 standard.
- **std_jis**—Displays threads in the top and side views of drawings in accordance with the JIS standard.

Note

The std_iso and std_ansi values are valid for drawings created before Pro/ENGINEER Release 15.0.

From: Pandhare, Swapnil [<mailto:spandhare@ptc.com>]
Sent: Monday, September 22, 2014 12:40 PM
To: sky king
Subject: RE: PTC Desktop Sharing Session for Case 12175340

Hi sky king,

No need to set "hlr_for_threads". Just set the other option "thread_standard" set to value "std_ansi_imp_assy". See attached files.

Thanks ,
Swapnil

From: sky king
Sent: 23 September 2014 00:59
To: Pandhare, Swapnil
Subject: RE: PTC Desktop Sharing Session for Case 12175340

You set "hlr_for_threads" back to value "yes", which works with "thread_standard" set to value "std_ansi_imp_assy". Drawing is OK. What about the model?

From: Pandhare, Swapnil [<mailto:spandhare@ptc.com>]
Sent: Monday, September 22, 2014 12:18 PM
To: sky king
Subject: RE: PTC Desktop Sharing Session for Case 12175340

Attaching the file...

Thanks ,
Swapnil

From: Pandhare, Swapnil
Sent: 23 September 2014 00:48
To: sky king
Subject: RE: PTC Desktop Sharing Session for Case 12175340

Hi sky king,

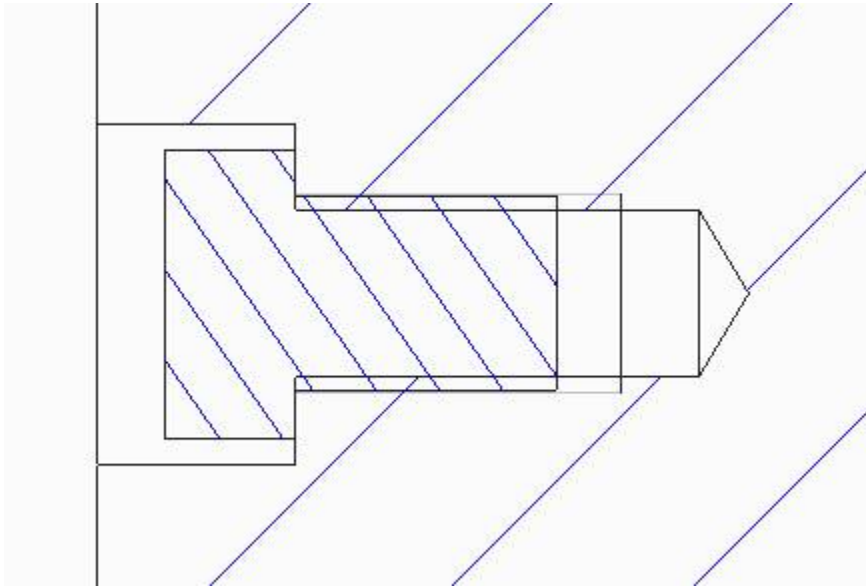
Please find attached drawing, paste this in the working directory and open in Creo. Let me know if this helps.

Thanks ,
Swapnil

From: Pandhare, Swapnil
Sent: 23 September 2014 00:42

To: sky king

Subject: RE: PTC Desktop Sharing Session for Case 12175340



Thanks ,
Swapnil

From: sky king

Sent: 23 September 2014 00:41

To: Pandhare, Swapnil

Subject: RE: PTC Desktop Sharing Session for Case 12175340

Can you show me what you are seeing?

From: Pandhare, Swapnil [<mailto:spandhare@ptc.com>]

Sent: Monday, September 22, 2014 11:44 AM

To: sky king

Subject: RE: PTC Desktop Sharing Session for Case 12175340

Hi sky king,

Please set detail option “thread_standard” set to value “std_ansi_imp_assy” (Please update sheets after setting this option), this should solve this issue. For more information regarding this option refer to the [help centre](#) document. With this I am closing this case for now

Let me know if have further questions.

Thanks ,
Swapnil

From: sky king
Sent: 22 September 2014 23:59
To: Pandhare, Swapnil
Subject: RE: PTC Desktop Sharing Session for Case 12175340

With “hlr_for_threads” set to value “no”, the issue is still there, but with another line type.

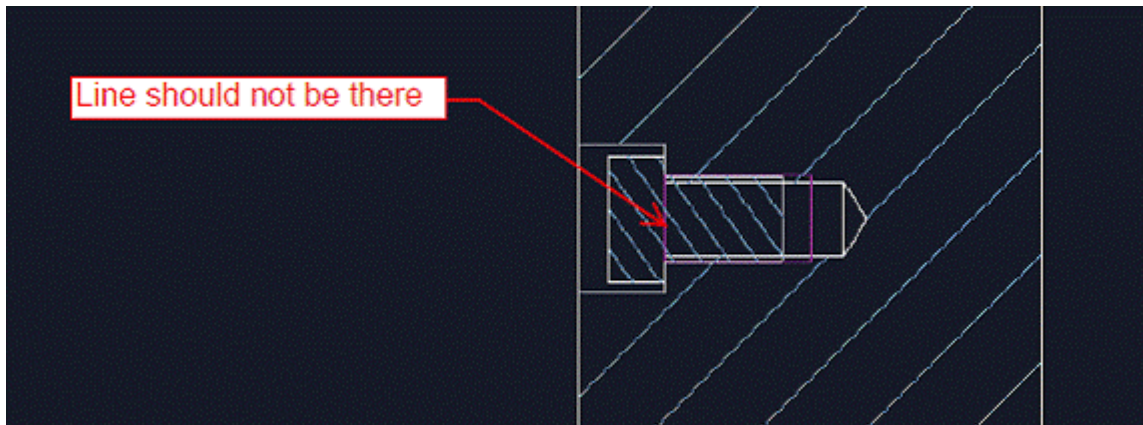
From: Pandhare, Swapnil [<mailto:spandhare@ptc.com>]
Sent: Monday, September 22, 2014 11:24 AM
To: sky king
Subject: RE: PTC Desktop Sharing Session for Case 12175340

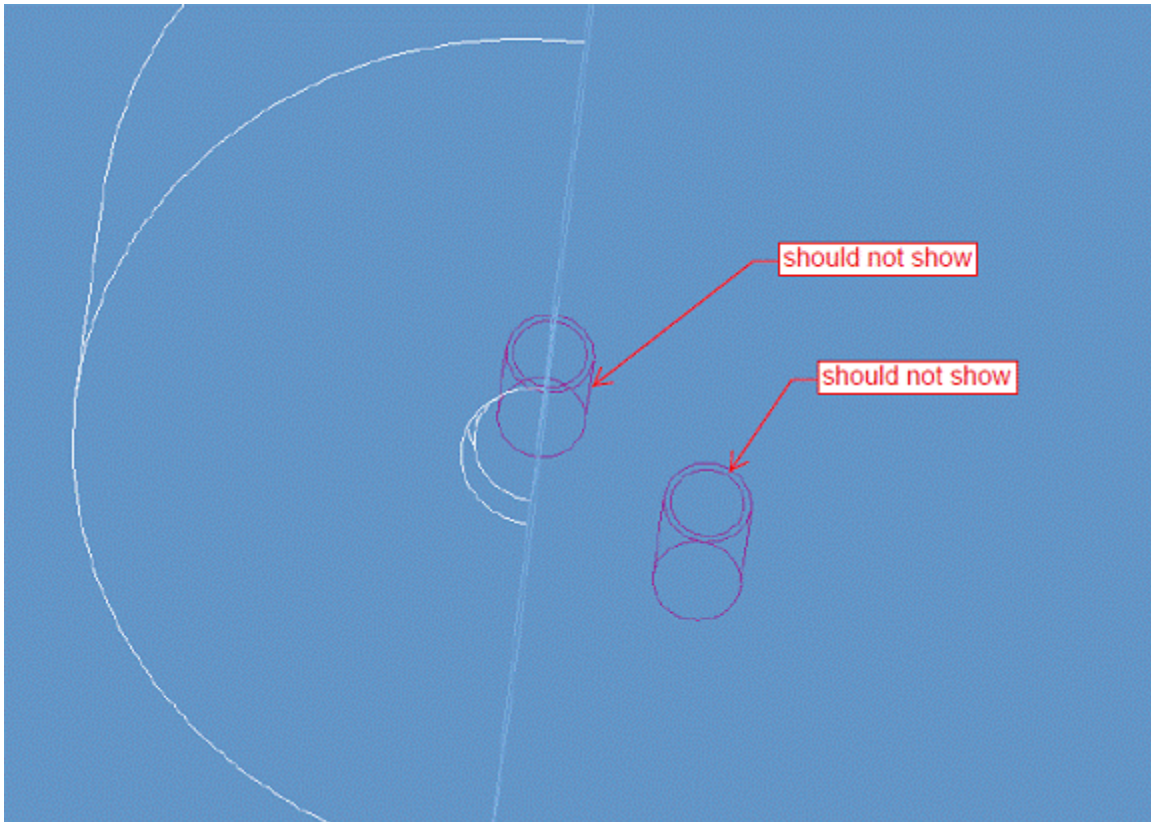
Hi sky king,

I am able to reproduce the issue, will check this and get back to you.

Thanks ,
Swapnil

From: sky king
Sent: 22 September 2014 23:40
To: Pandhare, Swapnil
Subject: RE: PTC Desktop Sharing Session for Case 12175340





From: Pandhare, Swapnil [<mailto:spandhare@ptc.com>]
Sent: Monday, September 22, 2014 10:32 AM
To: sky king
Subject: RE: PTC Desktop Sharing Session for Case 12175340

Hi sky king,

Could you please test the issue with setting drawing/detail option “hlr_for_threads” set to value “no”?

Thanks ,
Swapnil

From: sky king
Sent: 22 September 2014 20:51
To: Pandhare, Swapnil
Subject: RE: PTC Desktop Sharing Session for Case 12175340

The line showing the threaded hole should not be on the bolt.

From: spandhare@ptc.com [<mailto:spandhare@ptc.com>]
Sent: Monday, September 22, 2014 7:46 AM

To: sky king

Subject: PTC Desktop Sharing Session for Case 12175340

Dear sky king,

Swapnil Pandhare is inviting you to join in a Desktop Sharing session as part of the investigation of PTC Technical Support Case C12175340.

To join the session please click [here](#).

Or paste the following link into your browser

<http://support.ptc.com/appserver/cs/webex/disclaimer.jsp?call=12175340&url=https://ptcsupport.webex.com/ptcsupport/sc30/t.php?l=590595273>

Regards,

PTC Technical Support

[Desktop Sharing FAQs](#) | [PTC Technical Support](#) | [Privacy Policy](#)

This e-mail was sent to: sky king

PTC, 140 Kendrick Street, Needham, MA 02494 USA