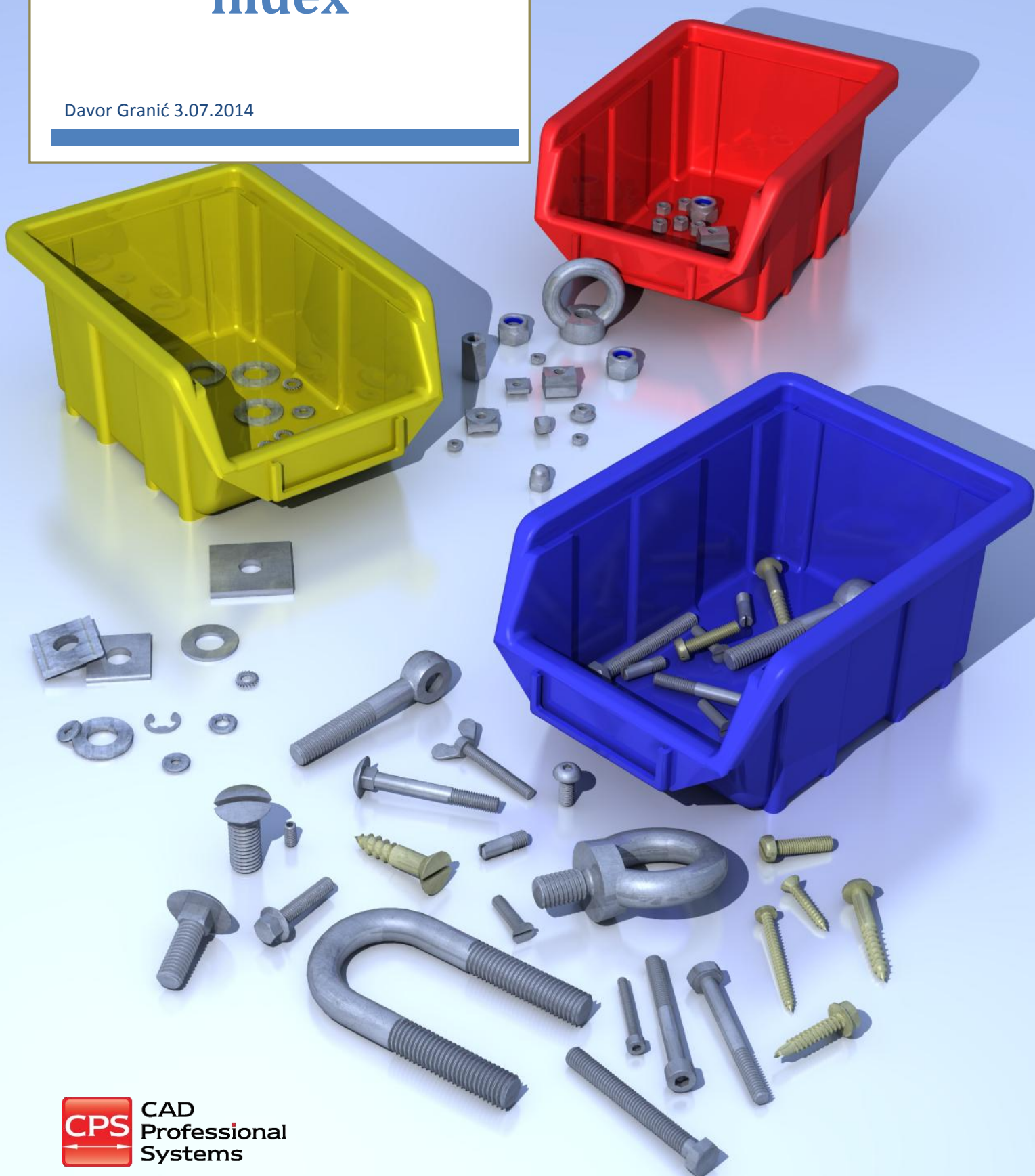


Index of all fastener standards and dimensions that are given in 3 Creo 2.0 parts that make Fastener library.

Fastener library index

Davor Granić 3.07.2014



Contents

BOLTS / SCREWS/NAILS (bolt_universal.prt)..... 3

 DIN 84 / ISO 1207 3

 DIN 85 / ISO 1580 3

 DIN 315 4

 DIN 427 4

 DIN 444 5

 DIN 464 5

 DIN 551 / ISO 7434 6

 DIN 580 / ISO 3266 6

 DIN 603 / ISO 8677 Partial thread 7

 DIN 603 / ISO 8677 7

 DIN 653 7

 DIN 912 / ISO 4762 Partial thread 8

 DIN 912 / ISO 4762 8

 DIN 913 / ISO 4029 9

 DIN 931 / ISO 4029 9

 DIN 933 / ISO 4017 10

 DIN 938 11

 DIN 963 / ISO 2009 12

 DIN 964 / ISO 2010 12

 DIN 975 13

 DIN EN 1024 Countersink head 13

 DIN EN 1024 Flat head..... 14

 DIN 3570 14

 DIN 6921 / ISO 1665 15

 DIN 7991 / ISO 10642 15

 DIN 7991 / ISO 10642 Partial thread 16

 ISO 7380 17

 DIN 96 17

 DIN 97 18

 DIN7504K / ISO15480..... 18

 DIN 7981 / ISO7049 19

 DIN 7982/ ISO7050 19


NUTS / RIVET INSERTS (nut_universal.prt)..... 20

 DIN 315 20

 DIN439B / ISO4035..... 20

DIN466.....	20
DIN467.....	20
DIN508/ ISO 299.....	20
DIN 555 / ISO 4034.....	21
DIN 562.....	21
DIN 582 / ISO3266.....	21
DIN 917.....	21
DIN 928.....	21
DIN935.....	21
DIN 982.....	22
DIN 985 / ISO 7040.....	22
DIN 1587.....	22
DIN 1624.....	22
DIN 1804.....	22
DIN 6334.....	23
DIN 6923.....	23
DIN 7965.....	23
UPO Rivet nut insert.....	23
WASHERS (washer_universal.prt).....	24
DIN 125A / ISO 7089.....	24
DIN 127.....	24
DIN 433 / ISO 7092.....	24
DIN 435.....	24
DIN 436.....	24
DIN 462.....	25
DIN 988.....	25
DIN 6796.....	25
DIN 6798A.....	25
DIN 6799.....	25
DIN 9021.....	26


BOLTS / SCREWS/NAILS (bolt_universal.prt)



DIN 84 / ISO 1207

76 parts

L\M	M2	M2.5	M3	M4	M5	M6	M8	M10	M14	M16	M20	M24	M30
4	*												
5	*	*	*										
6	*	*	*			*							
8	*	*	*	*		*							
10	*	*	*	*	*	*							
12	*	*	*	*	*	*							
16	*	*	*	*	*	*	*						
20	*		*	*	*	*	*	*					
25			*	*	*	*	*	*					
30			*	*	*	*	*	*					
35			*	*	*	*	*	*					
40			*	*	*	*	*	*					
45				*	*	*	*	*					
50				*	*	*	*	*					
60						*	*	*					

	DIN 85 / ISO 1580 64 parts													
	L\M	M2	M2.5	M3	M4	M5	M6	M8	M10	M14	M16	M20	M24	M30
4														
5	*	*	*											
6	*	*	*	*										
8	*	*	*	*	*									
10	*	*	*	*	*	*	*							
12	*	*	*	*	*	*	*							
16	*	*	*	*	*	*	*							
20			*	*	*	*	*	*						
25			*	*	*	*	*	*						
30				*	*	*	*	*						
35				*	*	*	*	*						
40				*	*	*	*	*						
45							*	*						
50							*	*						



DIN 315

69 parts

L\M	M4	M5	M6	M8	M10	M12	M14	M16	M20	M22	M24	
4												
5												
6												
8	*	*										
10	*	*	*	*								
12	*	*	*	*								
16	*	*	*	*	*	*						
20	*	*	*	*	*	*	*					
25	*	*	*	*	*	*	*					
30	*	*	*	*	*	*	*	*	*			
35		*	*	*	*	*	*	*				
40		*	*	*	*	*	*	*				
50			*	*	*	*	*	*	*			
60				*	*	*		*				
70						*						
80						*			*	*	*	



DIN 427

56 parts

L\M	M2	M3	M4	M5	M6	M8	M10	M12	M14	M16	M18	M20
4												
5	*											
6	*	*										
8	*	*	*									
10		*	*	*								
12		*	*	*	*							
14			*	*	*							
16		*	*	*	*	*						
20		*			*	*	*					
25						*	*	*	*			
30							*	*	*	*	*	
35							*	*	*	*	*	*
40								*	*	*	*	*
45									*	*	*	*
50										*	*	*
55											*	*
60											*	*



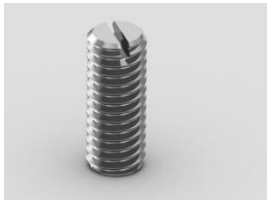
DIN 444
17 parts

L\M	M5	M6	M8	M10	M12	M16	M20
50	*	*	*	*			
75	*	*	*	*	*	*	
100					*	*	*
130					*	*	*
160							*



DIN 464
38 parts

L\M	M3	M4	M5	M6	M8	M10
8	*	*				
10	*	*	*	*		
12	*	*	*	*		
16	*	*	*	*	*	*
20	*	*	*	*	*	*
25		*	*	*	*	*
30		*	*	*	*	*
35				*	*	*
40				*	*	*



DIN 551 / ISO 7434

69 parts

L\M	M2	M3	M4	M5	M6	M8	M10	M12
2	*							
3	*	*						
4	*	*	*					
5	*	*	*	*				
6	*	*	*	*	*			
8	*	*	*	*	*	*		
10	*	*	*	*	*	*	*	
12		*	*	*	*	*	*	*
16		*	*	*	*	*	*	*
20			*	*	*	*	*	*
25				*	*	*	*	*
30					*	*	*	*
35						*	*	*
40						*	*	*
45							*	*
50							*	*
55								*
60								*



DIN 580 / ISO 3266

11 parts

L\M	M8	M10	M12	M16	M20	M24	M30	M36	M42	M48	M56
13	*										
17		*									
20.5			*								
27				*							
30					*						
36						*					
45							*				
54								*			
63									*		
68										*	
78											*



DIN 603 / ISO 8677 Partial thread

21 parts

L\M	M5	M6	M8	M10	M12	M14	M16	M18	M20
25	*	*							
30	*	*	*						
35	*	*	*	*					
40	*	*	*	*					
45	*	*	*	*					
50	*	*	*	*					



DIN 603 / ISO 8677

30 parts

L\M	M5	M6	M8	M10	M12	M14	M16	M18	M20
16	*	*							
20	*	*	*	*					
25	*	*	*	*					
30	*	*	*	*					
35	*	*	*	*					
40	*	*	*	*					
45	*	*	*	*					
50	*	*	*	*					



DIN 653

32 parts

L\M	M3	M4	M5	M6	M8	M10
6	*					
8	*	*				
10	*	*	*			
12	*	*	*	*		
16	*	*	*	*	*	
20	*	*	*	*	*	*
25			*	*	*	*
30			*	*	*	*
35					*	*
40						*



DIN 912 / ISO 4762 Partial thread

44parts

L\M	M5	M6	M8	M10	M12	M16
35	*	*				
40	*	*	*			
45	*	*	*	*		
50	*	*	*	*		
55	*	*	*	*	*	
60	*	*	*	*	*	
65	*	*	*	*	*	*
70	*	*	*	*	*	*
80					*	*
90					*	*
100					*	*
110						*
120						*



DIN 912 / ISO 4762

95 parts

L\M	M2	M3	M4	M5	M6	M8	M10	M12	M16
6	*								
8	*	*	*	*					
10	*	*	*	*	*				
12	*	*	*	*	*				
16		*	*	*	*	*	*	*	
20		*	*	*	*	*	*	*	
25		*	*	*	*	*	*	*	
30		*	*	*	*	*	*	*	
35			*	*	*	*	*	*	
40			*	*	*	*	*	*	
45				*	*	*	*	*	
50				*	*	*	*	*	
55				*	*	*	*	*	
60				*	*	*	*	*	
64				*	*	*	*	*	*
70				*	*	*	*	*	*
80								*	*
90								*	*
100								*	*
110									*
120									*



DIN 913 / ISO 4029

68parts

L\M	M2	M3	M4	M5	M6	M8	M10	M12
3	*	*						
4	*	*	*					
5	*	*	*	*				
6	*	*	*	*	*			
8	*	*	*	*	*	*		
10	*	*	*	*	*	*	*	
12		*	*	*	*	*	*	*
16		*	*	*	*	*	*	*
20			*	*	*	*	*	*
25				*	*	*	*	*
30					*	*	*	*
35						*	*	*
40						*	*	*
45							*	*
50							*	*
55								*
60								*



DIN 931 / ISO 4029

167parts

L\M	M5	M6	M8	M10	M12	M16	M20	M22	M24	M27	M30	M33	M36
25	*												
30	*	*											
35	*	*	*										
40	*	*	*	*									
45	*	*	*	*	*								
50	*	*	*	*	*								
55						*							
60			*	*	*	*							
65							*						
70			*	*	*	*	*	*					
75								*	*				
80				*	*	*	*	*	*	*			
90				*	*	*	*	*	*	*	*		
100				*	*	*	*	*	*	*	*	*	
110				*	*	*	*	*	*	*	*	*	*
120				*	*	*	*	*	*	*	*	*	*
130				*	*	*	*	*	*	*	*	*	*
140					*	*	*	*	*	*	*	*	*
150					*	*	*	*	*	*	*	*	*
160							*	*	*	*	*	*	*
170							*	*	*	*	*	*	*

180							*	*	*	*	*	*	*
190							*	*	*	*	*	*	*
200							*	*	*	*	*	*	*
210							*	*	*	*	*	*	*
220							*	*	*	*	*	*	*
230											*	*	*
240											*	*	*
250											*	*	*
260											*	*	*



DIN 933 / ISO 4017

282 parts

L\M	M2	M3	M4	M5	M6	M8	M10	M12	M16	M20	M22	M24	M27	M30	M33	M36
6	*	*	*	*												
8	*	*	*	*												
10	*	*	*	*	*											
12	*	*	*	*	*	*										
16	*	*	*	*	*	*	*									
20	*	*	*	*	*	*	*	*								
25		*	*	*	*	*	*	*								
30		*	*	*	*	*	*	*	*							
35			*	*	*	*	*	*	*							
40			*	*	*	*	*	*	*	*						
45			*	*	*	*	*	*	*	*	*					
50			*	*	*	*	*	*	*	*	*	*	*	*	*	*
55				*	*	*	*	*	*	*	*	*	*	*	*	*
60				*	*	*	*	*	*	*	*	*	*	*	*	*
65					*	*	*	*	*	*	*	*	*	*	*	*
70					*	*	*	*	*	*	*	*	*	*	*	*
75					*	*	*	*	*	*	*	*	*	*	*	*
80					*	*	*	*	*	*	*	*	*	*	*	*
85					*	*	*	*	*	*	*	*	*	*	*	*
90					*	*	*	*	*	*	*	*	*	*	*	*
100						*	*	*	*	*	*	*	*	*	*	*
110						*	*	*	*	*	*	*	*	*	*	*
120							*	*	*	*	*	*	*	*	*	*
130							*	*	*	*	*	*	*	*	*	*
140							*	*	*	*	*	*	*	*	*	*
150							*	*	*	*	*	*	*	*	*	*
160										*	*	*	*	*	*	*
170										*	*	*	*	*	*	*
180										*	*	*	*	*	*	*
190										*	*	*	*	*	*	*
200										*	*	*	*	*	*	*



DIN 938

236parts

L\M	M5	M6	M8	M10	M12	M14	M16	M18	M20	M22	M24	M27	M30	M33	M36
22	*														
25	*	*													
28	*	*													
30	*	*	*												
35	*	*	*	*											
40	*	*	*	*	*										
45	*	*	*	*	*	*									
50	*	*	*	*	*	*	*								
55		*	*	*	*	*	*	*							
60		*	*	*	*	*	*	*	*						
65			*	*	*	*	*	*	*	*					
70			*	*	*	*	*	*	*	*	*				
75			*	*	*	*	*	*	*	*	*				
80				*	*	*	*	*	*	*	*	*			
85				*	*	*	*	*	*	*	*	*			
90				*	*	*	*	*	*	*	*	*	*		
95				*	*	*	*	*	*	*	*	*	*	*	
100				*	*	*	*	*	*	*	*	*	*	*	*
110					*	*	*	*	*	*	*	*	*	*	*
120					*	*	*	*	*	*	*	*	*	*	*
130						*	*	*	*	*	*	*	*	*	*
140						*	*	*	*	*	*	*	*	*	*
150							*	*	*	*	*	*	*	*	*
160							*	*	*	*	*	*	*	*	*
170								*	*	*	*	*	*	*	*
180								*	*	*	*	*	*	*	*
190									*	*	*	*	*	*	*
200									*	*	*	*	*	*	*
220												*	*	*	*
240												*	*	*	*
260												*	*	*	*
280												*	*	*	*
300													*	*	*
320														*	*
340														*	*
360															*



DIN 963 / ISO 2009

101 parts

L\M	M2	M3	M4	M5	M6	M8	M10	M12
4	*	*						
5			*					
6	*	*	*	*				
8	*	*	*	*	*			
10	*	*	*	*	*			
12	*	*	*	*	*			
16	*	*	*	*	*	*	*	
20	*	*	*	*	*	*	*	*
25		*	*	*	*	*	*	*
30		*	*	*	*	*	*	*
35		*	*	*	*	*	*	*
40		*	*	*	*	*	*	*
45		*	*	*	*	*	*	*
50		*	*	*	*	*	*	*
55						*	*	*
60						*	*	*
65						*	*	*
70						*	*	*



DIN 964 / ISO 2010

101 parts

L\M	M2	M3	M4	M5	M6	M8	M10	M12
4	*	*						
5			*					
6	*	*	*	*				
8	*	*	*	*	*			
10	*	*	*	*	*			
12	*	*	*	*	*			
16	*	*	*	*	*	*	*	
20	*	*	*	*	*	*	*	*
25		*	*	*	*	*	*	*
30		*	*	*	*	*	*	*
35		*	*	*	*	*	*	*
40		*	*	*	*	*	*	*
45		*	*	*	*	*	*	*
50		*	*	*	*	*	*	*
55						*	*	*
60						*	*	*
65						*	*	*
70						*	*	*



DIN 975

7 parts

L\M	M2	M3	M4	M5	M6	M8	M10
1000	*	*	*	*	*	*	*



DIN EN 1024 Countersink head

60 parts

L\Ø	1,2	1,4	1,6	1,8	2	2,2	2,4	2,5	2,7	3	3,1	3,4	3,5	3,8	4	4,2	4,6	5	6
15	*																		
20	*	*																	
25		*	*																
30			*	*	*	*	*												
35				*	*														
40				*	*	*	*												
50						*	*		*	*									
55							*	*											
60								*	*	*		*							
65									*		*								
70										*	*	*	*	*					
80										*	*	*	*	*					
90												*	*	*	*		*		
100														*	*	*	*	*	
110															*	*			
120															*		*	*	
125																	*		
140																		*	
150																		*	
160																			*
175																			*
180																			*
200																			*



DIN EN 1024 Flat head

26 parts

L\Ø	1,6	1,8	2	2,2	2,4	2,7	3	3,5	4	4,5	5	5,5	6
30		*											
32	*												
35			*										
40			*										
35													
40				*									
50					*	*							
55						*	*						
60						*	*						
70							*	*					
80								*					
90									*				
100										*			
110											*		
120												*	
125											*	*	
130												*	
140												*	*
150													*
160													*
180													*



DIN 3570

18 parts

Fi\M	M10	M12	M16	M20	M24
23	*				
30	*				
38	*				
46	*				
52	*				
64		*			
82		*			
94		*			
120			*		
148			*		
176			*		
202			*		
228				*	
282				*	
332				*	

378					*
428					*
530					*



DIN 6921 / ISO 1665

92 parts

L\M	M5	M6	M8	M10	M12	M14	M16
10	*						
12	*	*	*	*			
16	*	*	*	*			
20	*	*	*	*	*		
25	*	*	*	*	*	*	*
30	*	*	*	*	*	*	*
35	*	*	*	*	*	*	*
40	*	*	*	*	*	*	*
45	*	*	*	*	*	*	*
50	*	*	*	*	*	*	*
55	*	*	*	*	*	*	*
60	*	*	*	*	*	*	*
65	*	*	*	*	*	*	*
70	*	*	*	*	*	*	*
80	*	*	*	*	*	*	*
90		*	*	*	*	*	*
100		*	*	*	*	*	*
110				*	*	*	*
120				*	*	*	*
130				*	*	*	*
140					*	*	*
150						*	*



DIN 7991 / ISO 10642

191parts

L\M	M3	M4	M5	M6	M8	M10	M12	M16	M20	M24
6	*	*	*							
8	*	*	*	*						
10	*	*	*	*	*					
12	*	*	*	*	*	*				
16	*	*	*	*	*	*	*			
20	*	*	*	*	*	*	*	*		
25	*	*	*	*	*	*	*	*		
30	*	*	*	*	*	*	*	*		
35	*	*	*	*	*	*	*	*	*	
40	*	*	*	*	*	*	*	*	*	*

45		*	*	*	*	*	*	*	*	*
50		*	*	*	*	*	*	*	*	*
55			*	*	*	*	*	*	*	*
60			*	*	*	*	*	*	*	*
65			*	*	*	*	*	*	*	*
70			*	*	*	*	*	*	*	*
75			*	*	*	*	*	*	*	*
80			*	*	*	*	*	*	*	*
85				*	*	*	*	*	*	*
90				*	*	*	*	*	*	*
100				*	*	*	*	*	*	*
110					*	*	*	*	*	*
120					*	*	*	*	*	*
130						*	*	*	*	*
140							*	*	*	*
150							*	*	*	*
160								*	*	*
170									*	*
180									*	*
190									*	*
200									*	*



DIN 7991 / ISO 10642 Partial thread

147parts

L\M	M3	M4	M5	M6	M8	M10	M12	M16	M20	M24
16	*									
20	*	*	*							
25	*	*	*	*						
30	*	*	*	*	*	*				
35	*	*	*	*	*	*	*			
40	*	*	*	*	*	*	*			
45		*	*	*	*	*	*	*		
50		*	*	*	*	*	*	*	*	
55			*	*	*	*	*	*	*	
60			*	*	*	*	*	*	*	*
65			*	*	*	*	*	*	*	*
70			*	*	*	*	*	*	*	*
75			*	*	*	*	*	*	*	*
80			*	*	*	*	*	*	*	*
85				*	*	*	*	*	*	*
90				*	*	*	*	*	*	*
100				*	*	*	*	*	*	*
110					*	*	*	*	*	*
120					*	*	*	*	*	*
130						*	*	*	*	*
140							*	*	*	*
150							*	*	*	*
160								*	*	*

170									*	*
180									*	*
190									*	*
200									*	*



ISO 7380

61 parts

L\M	M3	M4	M5	M6	M8	M10	M12
6	*	*					
8	*	*	*	*			
10	*	*	*	*	*		
12	*	*	*	*	*	*	
16	*	*	*	*	*	*	*
20		*	*	*	*	*	*
25		*	*	*	*	*	*
30			*	*	*	*	*
35			*	*	*	*	*
40			*	*	*	*	*
45			*	*	*	*	*
50			*	*	*	*	*



DIN 96

83 parts

L\Fi	2,5	3	3,5	4	4,5	5	5,5	6	7	8
10	*	*	*	*						
12	*	*	*	*						
16	*	*	*	*	*	*	*			
20	*	*	*	*	*	*	*	*		
25	*	*	*	*	*	*	*	*		
30	*	*	*	*	*	*	*	*	*	*
35			*	*	*	*	*	*	*	*
40			*	*	*	*	*	*	*	*
45				*	*	*	*	*	*	*
50					*	*	*	*	*	*
60					*	*	*	*	*	*
70								*	*	*
80									*	*
100									*	*



DIN 97
75 parts

L\Fi	3	3,5	4	4,5	5	5.5	6	7	8
10		*	*						
12	*	*	*						
16	*	*	*	*	*	*			
20	*	*	*	*	*	*	*		
25	*	*	*	*	*	*	*		
30	*	*	*	*	*	*	*	*	*
35	*		*	*	*	*	*	*	*
40			*	*	*	*	*	*	*
45			*	*	*	*	*	*	*
50				*	*	*	*	*	*
60				*	*	*	*	*	*
70							*	*	*
80								*	*
100								*	*



DIN7504K / ISO15480
34 parts

L\Fi	3.5	3.9	4.2	4.8	5.5	6.3
9.5	*					
13	*	*	*	*		
16	*	*	*	*		
19	*	*	*	*	*	*
25	*	*	*	*	*	*
32		*	*	*	*	*
38			*	*	*	*
50				*	*	*
60						*



DIN 7981 / ISO7049

69parts

L\Fi	2.2	2.9	3.5	3.9	4.2	4.8	5.5	6.3
4.5	*							
6.5	*	*	*	*				
9.5	*	*	*	*	*	*		
13	*	*	*	*	*	*	*	*
16	*	*	*	*	*	*	*	*
19		*	*	*	*	*	*	*
25		*	*	*	*	*	*	*
32		*	*	*	*	*	*	*
38			*	*	*	*	*	*
50				*	*	*	*	*
60						*	*	*
70						*	*	*
75							*	*
80							*	*



DIN 7982/ ISO7050

69parts

L\Fi	2.2	2.9	3.5	3.9	4.2	4.8	5.5	6.3
4.5	*							
6.5	*	*	*	*				
9.5	*	*	*	*	*	*		
13	*	*	*	*	*	*	*	*
16	*	*	*	*	*	*	*	*
19		*	*	*	*	*	*	*
25		*	*	*	*	*	*	*
32		*	*	*	*	*	*	*
38			*	*	*	*	*	*
50				*	*	*	*	*
60						*	*	*
70						*	*	*
75							*	*
80							*	*

NUTS / RIVET INSERTS (nut_universal.prt)



DIN 315

11 parts


Thread	M4	M5	M6	M8	M10	M12	M14	M16	M20	M22	M24
--------	----	----	----	----	-----	-----	-----	-----	-----	-----	-----



DIN439B / ISO4035

28parts

Thread	M1.6	M2	M2.5	M3	M4	M5	M6	M8	M10	M12	M14
	M16	M18	M20	M22	M24	M27	M30	M33	M36	M39	M42
	M45	M48	M52	M56	M60	M64					



DIN466

7 parts

Thread	M2	M3	M4	M5	M6	M8	M10
--------	----	----	----	----	----	----	-----



DIN467

6parts

Thread	M3	M4	M5	M6	M8	M10
--------	----	----	----	----	----	-----



DIN508/ ISO 299

13 parts

Thread	M4	M5	M6	M8	M10	M12	M16	M20	M24	M30	M36	M42	M48
--------	----	----	----	----	-----	-----	-----	-----	-----	-----	-----	-----	-----



DIN 555 / ISO 4034
28 parts

Thread	M1.6	M2	M2.5	M3	M4	M5	M6	M8	M10	M12	M14
	M16	M18	M20	M22	M24	M27	M30	M33	M36	M39	M42
	M45	M48	M52	M56	M60	M64					



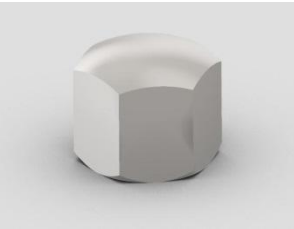
DIN 562
6parts

Thread	M3	M4	M5	M6	M8	M10
--------	----	----	----	----	----	-----



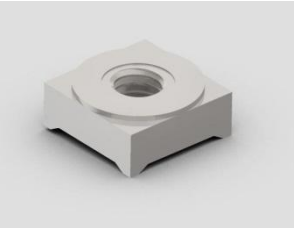
DIN 582 / ISO3266
15 parts

Thread	M8	M10	M12	M16	M20	M24	M30	M36	M42	M48	M56
	M64	M72	M80	M100							



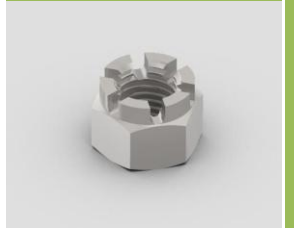
DIN 917
10 parts

Thread	M3	M4	M5	M6	M8	M10	M12	M16	M20	M24
--------	----	----	----	----	----	-----	-----	-----	-----	-----



DIN 928
8 parts

Thread	M4	M5	M6	M8	M10	M12	M14	M16
--------	----	----	----	----	-----	-----	-----	-----



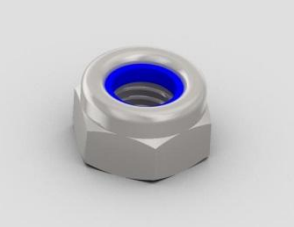
DIN935
14parts

Thread	M4	M5	M6	M8	M10	M12	M16	M20	M24	M30	M36	M42	M48	M56
--------	----	----	----	----	-----	-----	-----	-----	-----	-----	-----	-----	-----	-----



DIN 982
11 parts

Thread	M4	M5	M6	M8	M10	M12	M14	M16	M20	M22	M24
--------	----	----	----	----	-----	-----	-----	-----	-----	-----	-----



DIN 985 / ISO 7040
12 parts

Thread	M3	M4	M5	M6	M8	M10	M12	M14	M16	M20	M22	M24
--------	----	----	----	----	----	-----	-----	-----	-----	-----	-----	-----



DIN 1587
9 parts

Thread	M3	M4	M5	M6	M8	M10	M12	M16	M20
--------	----	----	----	----	----	-----	-----	-----	-----



DIN 1624
5 parts

Thread	M4	M5	M6	M8	M10
--------	----	----	----	----	-----



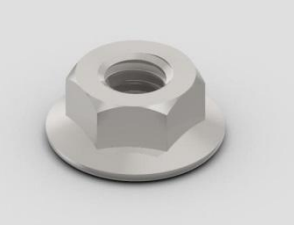
DIN 1804
52 parts

Thread	M4	M5	M6	M8	M10	M12	M14	M16	M18	M20	M22	M22	M24	M26
	M28	M30	M32	M35	M38	M40	M42	M45	M48	M50	M52	M55	M58	M60
	M62	M65	M68	M70	M72	M75	M80	M85	M90	M95	M100	M105	M110	M115
	M120	M125	M130	M140	M150	M160	M170	M180	M190	M200				



DIN 6334
13 parts

Thread	M6	M8	M10	M12	M14	M16	M18	M20	M22	M24	M27	M30	M36
--------	----	----	-----	-----	-----	-----	-----	-----	-----	-----	-----	-----	-----



DIN 6923
7 parts

Thread	M4	M5	M6	M8	M10	M12	M14
--------	----	----	----	----	-----	-----	-----



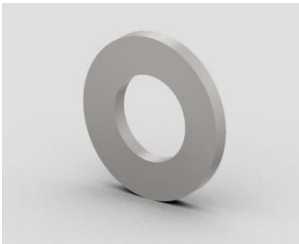
DIN 7965
parts

L/Thread	M3 L8	M4 L10	M5 L12	M6 L15	M8 L18	M10 L25	M12 L30	M16 L30	M20 L30
----------	-------	--------	--------	--------	--------	---------	---------	---------	---------



UPO Rivet nut insert
5parts


Thread	M4	M5	M6	M8	M10
--------	----	----	----	----	-----



DIN 125A / ISO 7089

25 parts

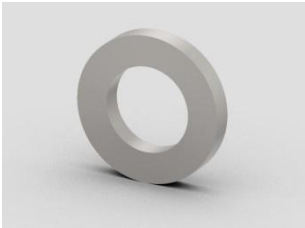
For	M1.6	M2	M2.5	M3	M3.5	M4	M5	M6	M8	M10	M12	M14
	M16	M18	M20	M22	M24	M27	M30	M33	M36	M39	M42	M45
	M48											



DIN 127

24 parts


For	M2	M2.5	M3	M3.5	M4	M5	M6	M8	M10	M12	M14
	M16	M18	M20	M22	M24	M27	M30	M33	M36	M39	M42
	M45	M48									



DIN 433 / ISO 7092

20parts

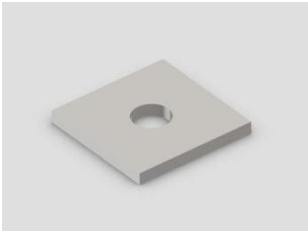
For	M2	M2.5	M3	M3.5	M4	M5	M6	M8	M10	M12	M14
	M16	M18	M20	M22	M24	M27	M30	M33	M36		



DIN 435

8 parts

For	M8	M10	M12	M16	M20	M22	M24	M27
-----	----	-----	-----	-----	-----	-----	-----	-----



DIN 436

16 parts

For	M8	M10	M12	M16	M20	M22	M24	M27	M30	M33	M36	M39
	M42	M45	M48	M52								



DIN 462
35 parts

Inner hole	8	10	12	14	16	18	20	22	24	26	28	30	32	35
	38	40	42	45	48	50	52	55	58	60	62	65	68	70
	72	75	80	85	90	95	100							



DIN 988
53 parts

s\M	M3	M4	M5	M6	M8	M10	M12	M16	M20
0.1	*	*	*	*	*	*	*	*	*
0.2	*	*	*	*	*	*	*	*	*
0.3	*	*	*	*	*	*	*	*	*
0.5	*	*	*	*	*	*	*	*	*
1	*	*	*	*	*	*	*	*	*
1.2									*
1.5									*
2				*	*	*	*	*	*



DIN 6796
12 parts

Thread	M2	M3	M4	M5	M6	M8	M10	M12	M16	M20	M24	M30
--------	----	----	----	----	----	----	-----	-----	-----	-----	-----	-----



DIN 6798A
13 parts

Thread	M2	M3	M4	M5	M6	M8	M10	M12	M14	M16	M18	M20	M22
--------	----	----	----	----	----	----	-----	-----	-----	-----	-----	-----	-----



DIN 6799
18 parts

Fi	0.8	1.2	1.5	1.9	2.3	3.2	4	5	6	7	8	9
	10	12	15	19	24	30						



DIN 9021
11 parts

Thread	M2.5	M3	M4	M5	M6	M8	M10	M12	M14	M16	M20
--------	------	----	----	----	----	----	-----	-----	-----	-----	-----