



WHO WANTS TO BE A PTC CREO ENGINEER

Steven LaPha Jr.

CAD/PLM Administrator

NASA Kennedy Space Center – Engineering Services Contract

June 6-9, 2016

liveworx.com | #LIVEWORX



A yellow arrow pointing towards the text.

This will be a live gameshow style presentation.

Contestants (attendees) will be asked a series of questions about Creo Parametric 3.0 with multiple choice answers. Show off your knowledge or come to learn.

This type of menu is making fewer appearances in Creo Parametric 3.0. Functions like Feature Operations, Edit References, and Spinal Bend no longer use it.

A

• Ribbon Interface

B

• Menu Manager

C

• Voice-Command

D

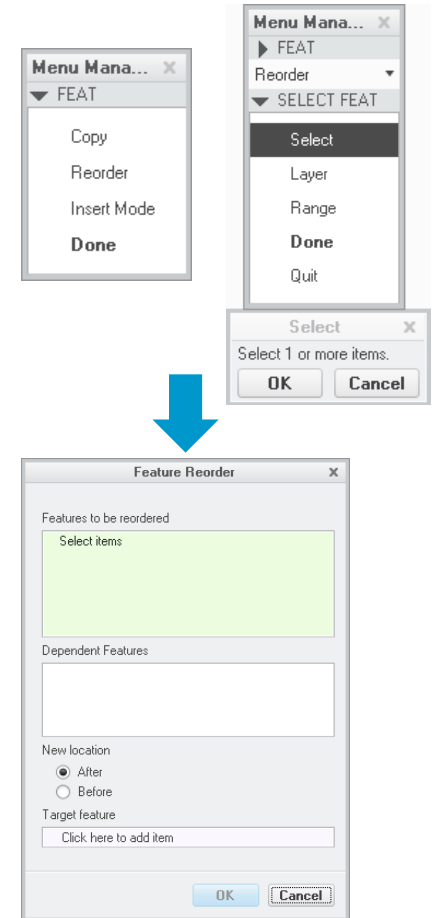
• Command Line

SAMPLE ANSWER

This type of menu is making fewer appearances in Creo Parametric 3.0. Functions like Feature Operations, Edit References, and Spinal Bend no longer use it.

Answer: **B – Menu Manager**

In Creo Parametric 3.0 the Menu Manager has been removed from more functions replacing them with Ribbon Interface icons, dialog boxes, and Ribbon Based menus.



The image features several colorful geometric shapes, primarily triangles and lines, scattered across the background. A large, multi-colored triangular shape is prominent on the right side, composed of various shades of blue, green, yellow, orange, pink, and purple. Several thin, colored lines (blue, pink, green, orange) radiate from the center of the text area. The text 'LIVE WORX 16' is the central focus, with 'LIVE' in a thin, outlined font and 'WORX 16' in a bold, solid black font. A small 'TM' trademark symbol is positioned to the upper right of the '6'.

LIVE
WORX 16™

TAKE A FRESH LOOK AT THINGS

liveworx.com