

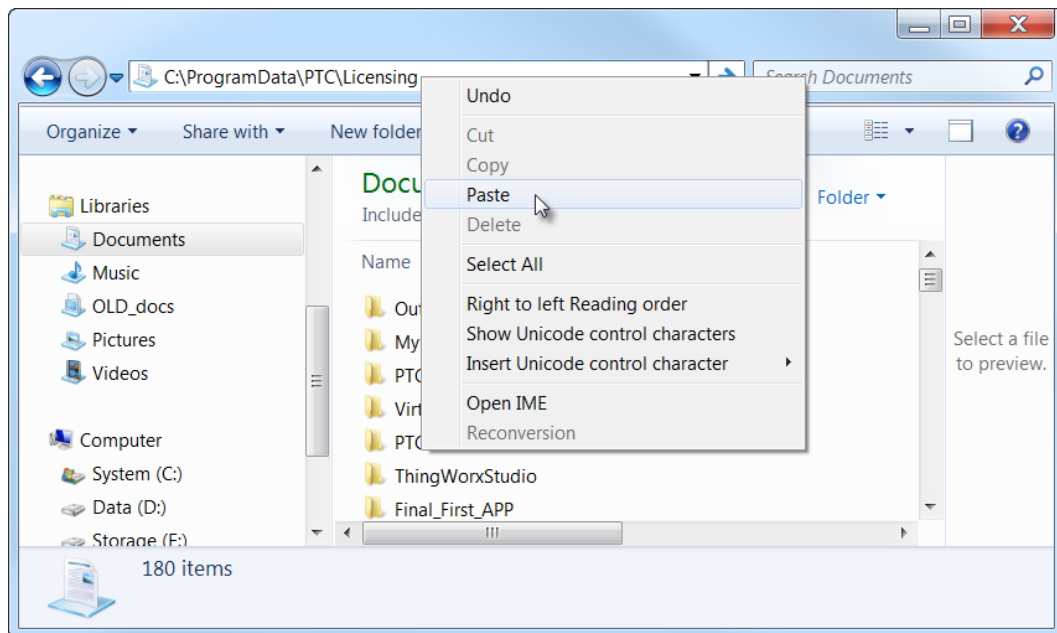
PTC Creo 6.0 - Schools Edition - Quick Installation Guide

1. Download the **PTC Creo 6.0** DVD image:

- www.ptc.com/appserver/auth/it/esd/academicFree.jsp
 - If necessary, enter your PTC username (your email address) and password, and then click **LOG IN**.
Create an account at www.ptc.com/appserver/common/account/ptcacademic.jsp
 - Accept the Export Agreement and then click **Continue**.

2. **If this is the first time you install Creo please jump to the next step.** If you had older Creo editions installed on your computer please go to **C:\ProgramData\PTC\Licensing** and delete all the older licenses (you can also move them to another folder until the Creo 6.0 is installed). After the folder is empty you can proceed with the next step.


*Please note that **ProgramData** folder is a hidden folder. The easy way to access this location is to simply copy **C:\ProgramData\PTC\Licensing** and paste it in the Windows explorer.*



3. **Unzip** the downloaded DVD image (MED-100WIN-CD-430_M###_Win64.zip):

represents the build code of Creo you downloaded. The actual number will vary as additional Creo builds are released.

Right-click the downloaded  zip file, select **Extract All** and then select a location the DVD will be unzipped to. *Select a location you can easily access, such as your Desktop.*

- Use Windows Explorer to open the resulting **MED-100WIN-CD-430_M###_Win64** folder.
- Temporarily disable all firewall, anti-virus and anti-spyware applications.
- Run **setup.exe**.
 - Right-click **setup.exe** and select  **Run as administrator** from the pop-up menu.



4. From the PTC Installation Assistant dialog box:

- Select **Install new software** and click **Next**.
- **Accept** the license agreement and click **Next**.
- In the **Simple License Entry** product code field, enter the product code **BE600908EDSTUDENTEDK12** and then click **Install Licensing**.

The screenshot shows the 'PTC Web Installation Assistant' window. On the left is a navigation pane with steps: Introduction (checked), Software Agreement (checked), Licenses (selected), Application Selection, Installation, and Finish. The main area is titled 'License Identification' and contains the following sections:

- Simple License Entry**: A text field containing 'BE600908EDSTUDENTEDK12' and an 'Install Licensing' button.
- Advanced License Entry**: A section with a plus icon and a description: 'Detected license sources are listed below. Click the "-" button to remove unwanted sources from the list. Click the "+" button to add more entries into the list. If you already have a license file, drag and drop it into the field below.'
- License Summary**: A table with columns 'Source' and 'Status'. The 'Source' column has a minus button and an empty text field. The 'Status' column has a plus button.
- Host ID**: A text field.
- Skip Licensing

At the bottom right are 'Back' and 'Next' buttons.

- Enter your PTC username (your email address) and password.
- Click **Login**.
- When you see the **"Success!"** message, click **Next**.
- In the application list, deselect all the applications you do not need, and then click **Install**.
- After the installation is complete, click **Finish**.

You are now ready to use PTC Creo 6.0 - Schools Edition

- The Schools Standard edition is installed with our custom Schools configuration. For more information on this configuration, you can reference this guide: http://apps.ptc.com/schools/references/config_creo_schools.pdf.
- For additional resources, please visit www.ptc.com/academic-program.
- If you need technical support, please visit **Support Forum**: communities.ptc.com/community/academic-program/support