

# Windchill Discussions

## Enhancements in 10.1

**Scott Morris (sm@ptc.com)**  
Windchill Product Management

January 2014



## Increase Overall Usability and Accessibility of Windchill Discussions

- **Single View of all Discussions – Inbox**
  - Status Indicator for New Comments, # of Unread and Date of last Comment
- **Single Viewing Tool for all Discussion Topics & Comments**
- **Define Participants for Each Discussion Topic**
  - Unique Recipient List for Each Discussion Topic
- **UI Workflow Simplification and New Capabilities**
  - Single, Unified Create/Edit Wizard
  - Create, Edit and Manage Drafts
  - Access Control for Close & Delete
  - Serial Commenting, no branched comments
- **Support for User Defined Attributes**
- **Ability to Close Topics**
  - Stop all further commenting

- **Inbox – Shows All Discussion Topics Participating In**
  - Enable: Customize,  Discussions
  - General & Object Level Discussion Topics in One Single View
  - Hyperlinked Topics and User Names
  - Identify Read Status
  - Identify Topics w/New Comments
  - Identify Last Time a Comment was Added
  - Identify the Number of “unread” (new) Comments
  - Identify Open/Closed Status
  - Configurable Displays for variable information, filtering and sorting

Discussions | Tasks | Updates | Checked-Out Work

My Discussions
Details

Topics	Status	Created By	Last Comment Date...	New Comments	Is topic closed	Phase	Priority	Participants
<a href="#">Bezel Concepts, Use Existing or New?</a>		Morris, Scott	2013-01-15 04:15 PM	0	No	Concept	Low	Glenn; Morris, Scott; K...
<a href="#">Concept Modeling &amp; Testing</a>		Nicole	2013-01-15 04:45 PM	4	No	Concept	Medium	Nicole; Kevin; Morris, S...
<a href="#">Outsourcing the Manufacturing?</a>		Melissa	2013-01-15 04:52 PM	3	Yes	Manufacturing	High	Kevin; Morris, Scott; M...
<a href="#">Do we have all the design requiremen...</a>		Kevin	2013-01-15 04:56 PM	2	No	Design	High	Susan; Melissa; Nicole...

(0 objects selected)
Search in

Customize ▾

- Tasks
- Updates
- Checked-Out Work
- Packages
- Workspaces
- Meetings
- Notebook
- Subscriptions
- Reports
- Discussions

## Object & Container Level Topics

- View Discussion Topics for a Windchill Object or Container
  - View Topics & Comments associated with the active Windchill object or Container
  - Topic Names are Hyperlinked to view a single Topic and its Comments





Discussions Tree View (10 objects)

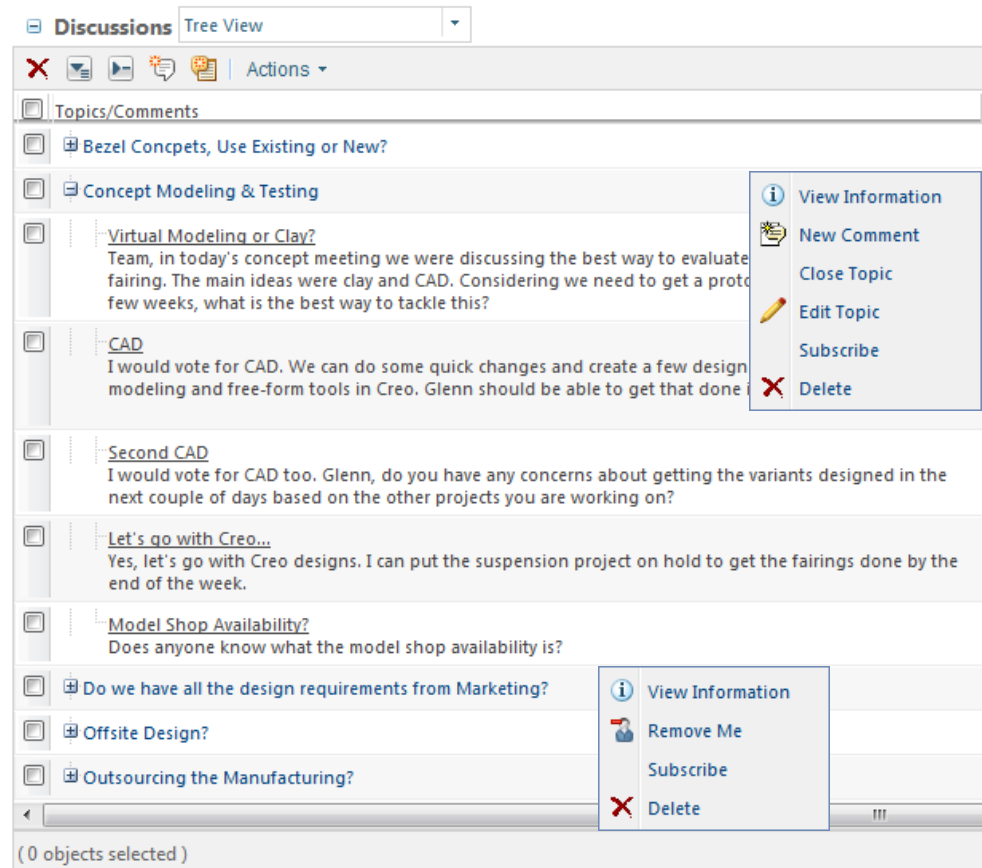
Find in tree

Topics/Comments	Edit Draft	Date	Last Comment Date	Created By
<a href="#">Bezel Concepts, Use Existing or New?</a>		2013-01-15 16:10 CST	2013-01-15 16:15 CST	Morris, Scott
<a href="#">Concept Modeling &amp; Testing</a>		2013-01-15 16:41 CST	2013-01-15 17:20 CST	Nicole
<a href="#">Virtual Modeling or Clay?</a> Team, in today's concept meeting we were discussing the best way to evaluate some new concepts for the fairing. The main ideas were clay and CAD. Considering we need to get a prototype out for test in the new few weeks, what is the best way to tackle this?		2013-01-15 16:41 CST		Nicole
<a href="#">CAD</a> I would vote for CAD. We can do some quick changes and create a few design variations using the direct modeling and free-form tools in Creo. Glenn should be able to get that done in a day or two.		2013-01-15 16:42 CST		Kevin
<a href="#">Second CAD</a> I would vote for CAD too. Glenn, do you have any concerns about getting the variants designed in the next couple of days based on the other projects you are working on?		2013-01-15 16:44 CST		Melissa
<a href="#">Let's go with Creo...</a> Yes, let's go with Creo designs. I can put the suspension project on hold to get the fairings done by the end of the week.		2013-01-15 16:45 CST		Glenn
<a href="#">Model Shop Availability?</a> Does anyone know what the model shop availability is?		2013-01-15 17:20 CST		Nicole
<a href="#">Do we have all the design requirements from Marketing?</a>		2013-01-15 16:55 CST	2013-01-15 16:56 CST	Kevin
<a href="#">Offsite Design?</a>		2013-01-15 17:01 CST	2013-01-15 17:02 CST	Glenn
<a href="#">Outsourcing the Manufacturing?</a>		2013-01-15 16:50 CST	2013-01-15 16:52 CST	Melissa

(0 objects selected)

## Single Viewing Tool for Discussions

- **View Discussion Topics for a Windchill Object or Container**
  - View Topics associated with the active Windchill object or Container
  - Hyperlinked Topic Names
    - View Single Topic & Comments
- **Configurable Views**
  -  Filtering, Column Selection, Sorting
- **Menu and RMB Actions**
  - Expand/Collapse
  - Create & Edit Topics
  - Create New Comments (Reply)
  - Subscribe
  -  Edit Draft Comments
  -  Close & Delete
  -  Add & Remove “Me”



## Single Topic Viewer

- View Comments for a Single Discussion Topic in one View

- Configurable Views
  - Sorting & Filtering
- Column Selection and Positioning

- Single Level Commenting

- No branches

- Actions

- Reply
  - Delete Comment
  - PDF and Excel Export

The screenshot displays the 'Single Discussion Topic Viewer' interface. At the top, there is a navigation bar with an 'Actions' dropdown, a search icon, and the title 'Discussion Topic - Concept Modeling & Testing'. Below this, a 'Details' tab is active, showing a list of attributes for the discussion topic. The attributes include: Object (DES1547 - Fairing Instrument Cluster), Topic (Concept Modeling & Testing), Created By (Nicole), Created On (2013-01-15 16:41 CST), Priority (Medium), and Phase (Concept). Below the attributes, there is a 'Comments' section with a search bar and a dropdown menu. The comments are displayed in a table with columns for 'Created By', 'Edit Draft', 'Last Modified', 'Attachments', and 'Link Name'. The comments are listed in chronological order, starting with Nicole's comment at 16:41 CST, followed by Kevin's at 16:42 CST, Melissa's at 16:44 CST, Glenn's at 16:45 CST, and Nicole's at 17:20 CST. At the bottom of the comments section, it indicates '(0 objects selected)'.

Attributes

Object: DES1547 - Fairing Instrument Cluster Participants: Nicole; Kevin; Morris, Scott; Susan; Glenn; Melissa

Topic: Concept Modeling & Testing

Created By: Nicole

Created On: 2013-01-15 16:41 CST

Priority: Medium

Phase: Concept

Comments (5 objects)

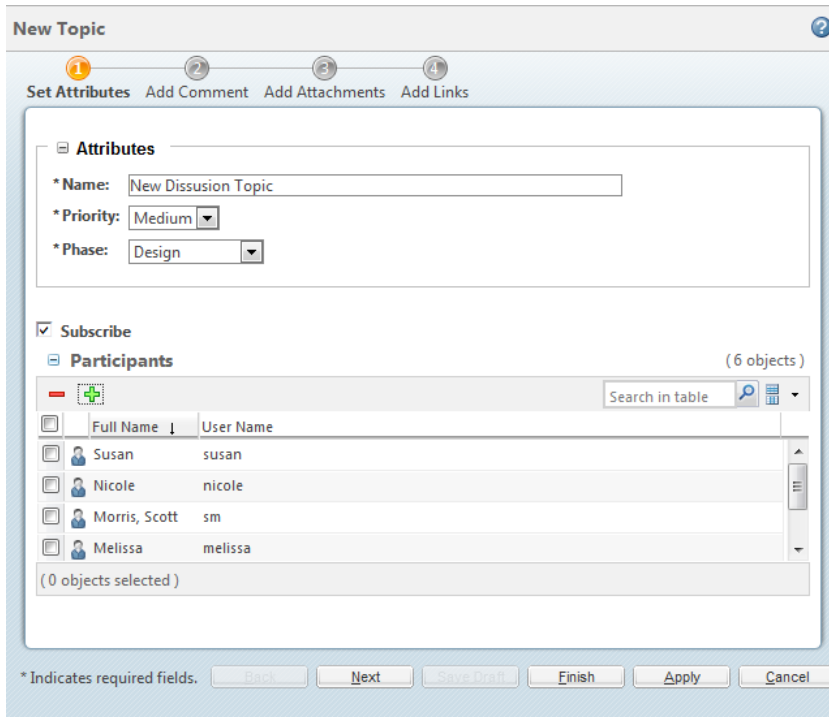
Created By	Edit Draft	Last Modified	Attachments	Link Name
Nicole		2013-01-15 16:41 CST		
Team, in today's concept meeting we were discussing the best way to evaluate some new concepts for the fairing. The main ideas were clay and CAD. Considering we need to get a prototype out for test in the new few weeks, what is the best way to tackle this?				
Kevin		2013-01-15 16:42 CST		
I would vote for CAD. We can do some quick changes and create a few design variations using the direct modeling and free-form tools in Creo. Glenn should be able to get that done in a day or two.				
Melissa		2013-01-15 16:44 CST		
I would vote for CAD too. Glenn, do you have any concerns about getting the variants designed in the next couple of days based on the other projects you are working on?				
Glenn		2013-01-15 16:45 CST		
Yes, let's go with Creo designs. I can put the suspension project on hold to get the fairings done by the end of the week.				
Nicole		2013-01-15 17:20 CST		
Does anyone know what the model shop availability is?				

(0 objects selected)

## Unified Topic & Comment Creation/Edit Wizard

- Define Topic
  - Name (optional user defined attributes)

- Define Participants (optional)
  -  Inbox Notification



**New Topic**

1 Set Attributes 2 Add Comment 3 Add Attachments 4 Add Links

**Attributes**

\*Name:

\*Priority:

\*Phase:

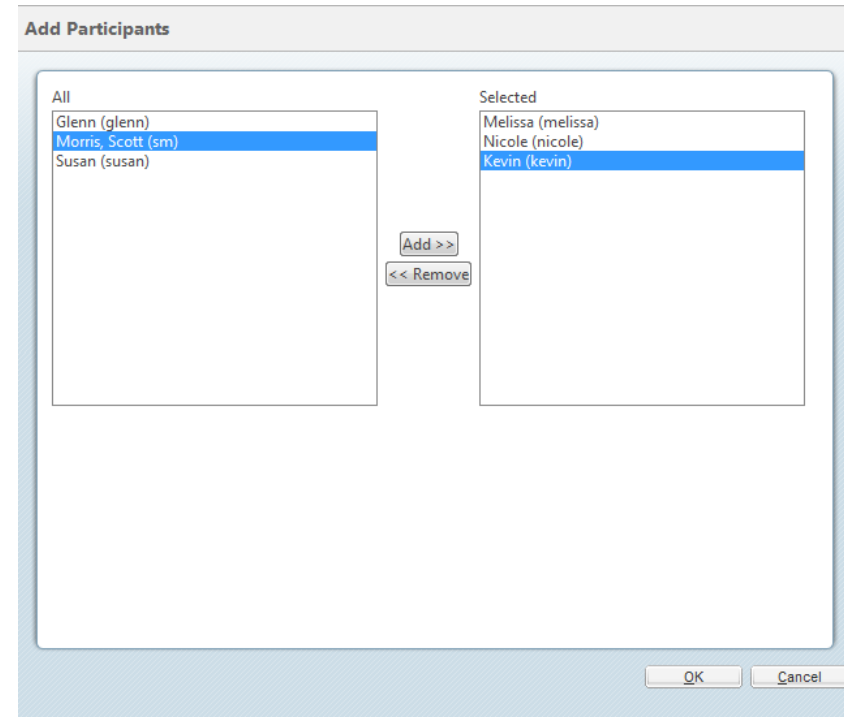
**Subscribe**

**Participants** (6 objects)

<input type="checkbox"/>	Full Name	User Name
<input type="checkbox"/>	Susan	susan
<input type="checkbox"/>	Nicole	nicole
<input type="checkbox"/>	Morris, Scott	sm
<input type="checkbox"/>	Melissa	melissa

(0 objects selected)

\* Indicates required fields.



**Add Participants**

**All**

- Glenn (glenn)
- Morris, Scott (sm)**
- Susan (susan)

**Selected**

- Melissa (melissa)
- Nicole (nicole)
- Kevin (kevin)**

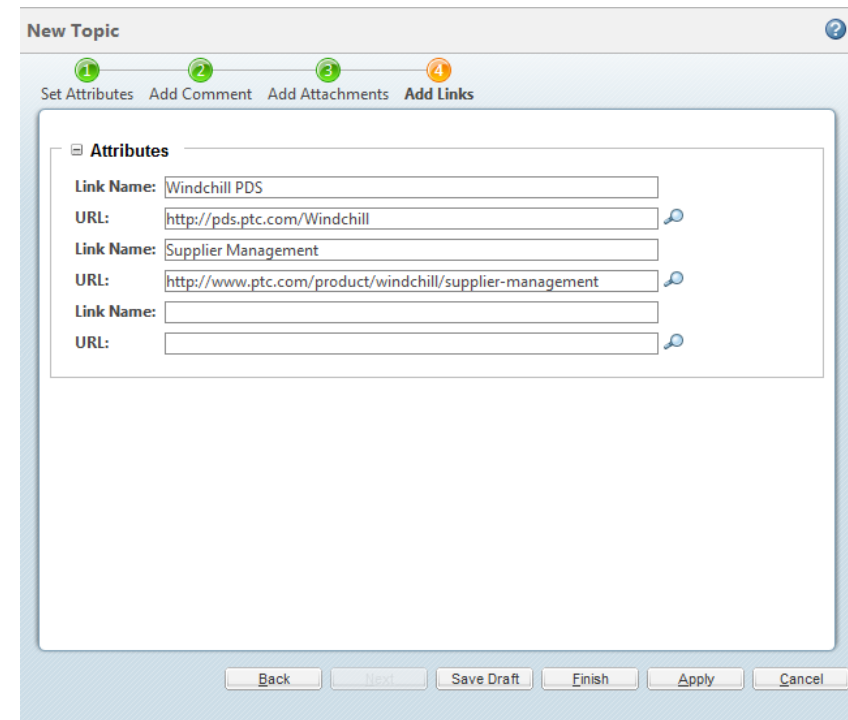
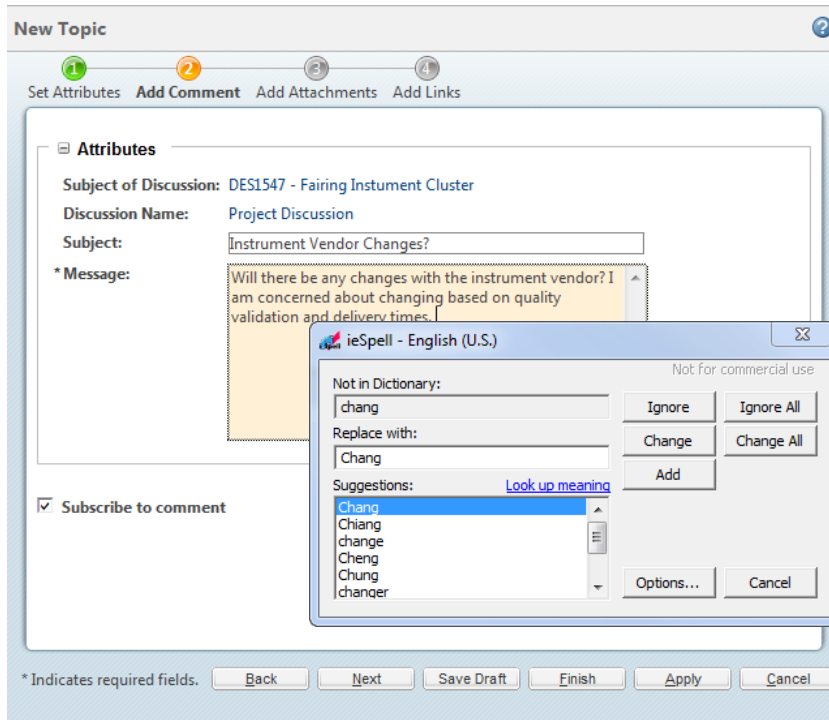
## Unified Topic & Comment Creation Wizard

- Define Comment

- Subject & Message
- Browser Supported Spell Check

- Add Attachments & Links (optional)

- External or Windchill Objects





wt.properties

## Windchill Property

wt.workflow.forum.TreeViewAndReplyPosting.enabled

## Description

Synopsis: Property to enable/disable Tree View and Reply to Comment actions in Discussion Table.

Description: This property is used to control both Tree View and Reply to Comment actions. This property needs to be added to the wt.properties file by the user. By default this property is true, so that user can see Tree view and can reply to the posted comment. If this property is set to false, user cannot see the Tree view and cannot reply to the posted comment.

wt.properties

## Windchill Property

wt.workflow.forum.CreateDefaultTopics.enabled

## Description

Synopsis: Property to enable/disable creation of default topics/postings from DiscussionForumTemplate.

Description: This property is used to control creation of default topics/postings. This property needs to be added to the wt.properties file by the user. By default this property is true, so that whenever, an object's Discussion tab is visited, default topics and postings get created as per defined in the DiscussionForumTemplate. If this property is set to false, the forum will not have any default topics or postings created in it.

wt.properties

## Windchill Property

wt.workflow.forum.defaultObjectForumTemplate

## Description

Synopsis: Name assigned to the default DiscussionForumTemplate for a document or part.

Description: A DiscussionForumTemplate with this name is used to create a forum for documents and parts.

## Windchill Property

wt.workflow.forum.objectForumTemplateXMLFile

## Description

Synopsis: File used to create the default DiscussionForumTemplate for documents and parts.

Description: File used to create the default DiscussionForumTemplate for documents and parts.

wt.properties

## Windchill Property

wt.workflow.forum.defaultForumTemplate

## Description

Synopsis: Name assigned to the default DiscussionForumTemplate for a project.

Description: A DiscussionForumTemplate with this name is used to create a forum for a project, if the xml for the project does not specify which forum template to use.

## Windchill Property

wt.workflow.forum.projectForumTemplateXMLFile

## Description

Synopsis: File used to create the default DiscussionForumTemplate for projects.

Description: File used to create the default DiscussionForumTemplate for projects.

wt.workflow.forum.objectForumTemplateXMLFile - objectForumTemplate.xml

- **Default**

```
<Structure>
<DefaultForumName><?loc-begin key="DISCUSSION_FORUM_NAME" maxlen="200"?>Standard Discussion
Forum<?loc-end?></DefaultForumName>
<Topic>
    <Name><?loc-begin key="GENERAL_TOPIC_NAME" maxlen="200"?>General<?loc-end?></Name>
</Topic>
</Structure>
```

- **Custom**

```
<Structure>
<DefaultForumName><?loc-begin key="DISCUSSION_FORUM_NAME" maxlen="200"?>Standard Discussion
Forum<?loc-end?></DefaultForumName>
<Topic>
    <Name><?loc-begin key="GENERAL_TOPIC_NAME" maxlen="200"?>General<?loc-end?></Name>
</Topic>
```

```
<Topic>
    <Name><?loc-begin key="NEW_TOPIC_NAME" maxlen="200"?>New<?loc-end?></Name>
</Topic>
```

```
</Structure>
```

**Note:** XML Load Files are located in %WT\_HOME%\LoadXMLFiles