

# INTEGRITY MODELER 8.3 WINDCHILL INTEGRATION – OVERVIEW AND USE CASES

Patrick Ollerton

December 2016



ptc

# INTEGRITY MODELER 8.3 – WINDCHILL INTEGRATION

1. Introduction
2. Modeler to Windchill Productivity
3. Modeler to Windchill Traceability
4. Detailed Use Cases

# INTEGRITY MODELER 8.3 - WINDCHILL INTEGRATION INTRODUCTION

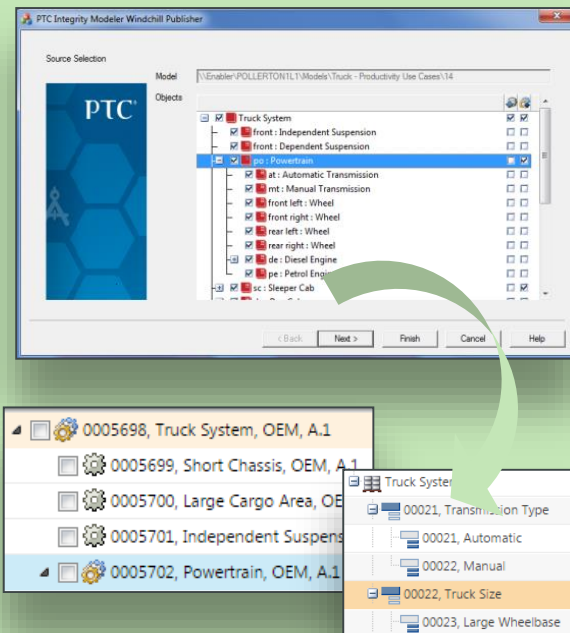
- Integrity Modeler to Windchill PDMLink Productivity
  - Auto-generation of Windchill PDMLink Parts from Model System Blocks
  - Auto-generation of Windchill PDMLink Options & Variants from Model Variation Points & Variants
- Integrity Modeler and Windchill PDMLink Bi-directional Traceability
  - Manage Traceability Links between Windchill Parts and Model System Blocks

## Business Value

- Increase productivity by:
  - accelerating PLM product/project start-up using pre-populated BoMs & Options
- Improve product quality by:
  - Avoiding the re-entry of data throughout the system & product lifecycle
  - enabling early impact analysis of system design changes and product part changes
- Reduce costs by;
  - Increasing reuse, considering product lines and product variation early system & product lifecycle

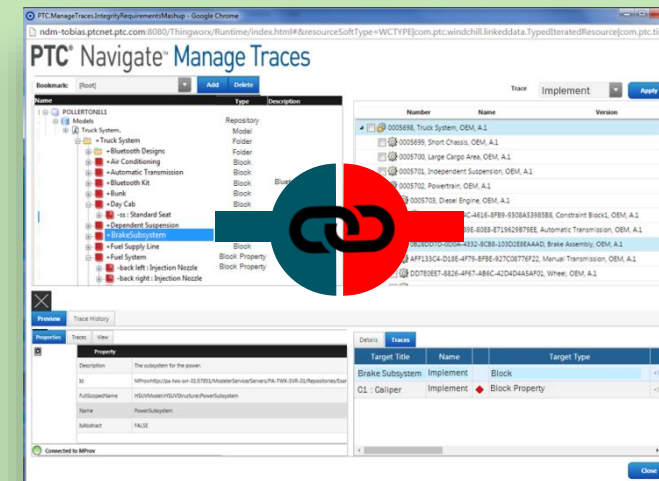
## Productivity

### Modeler Windchill Exporter



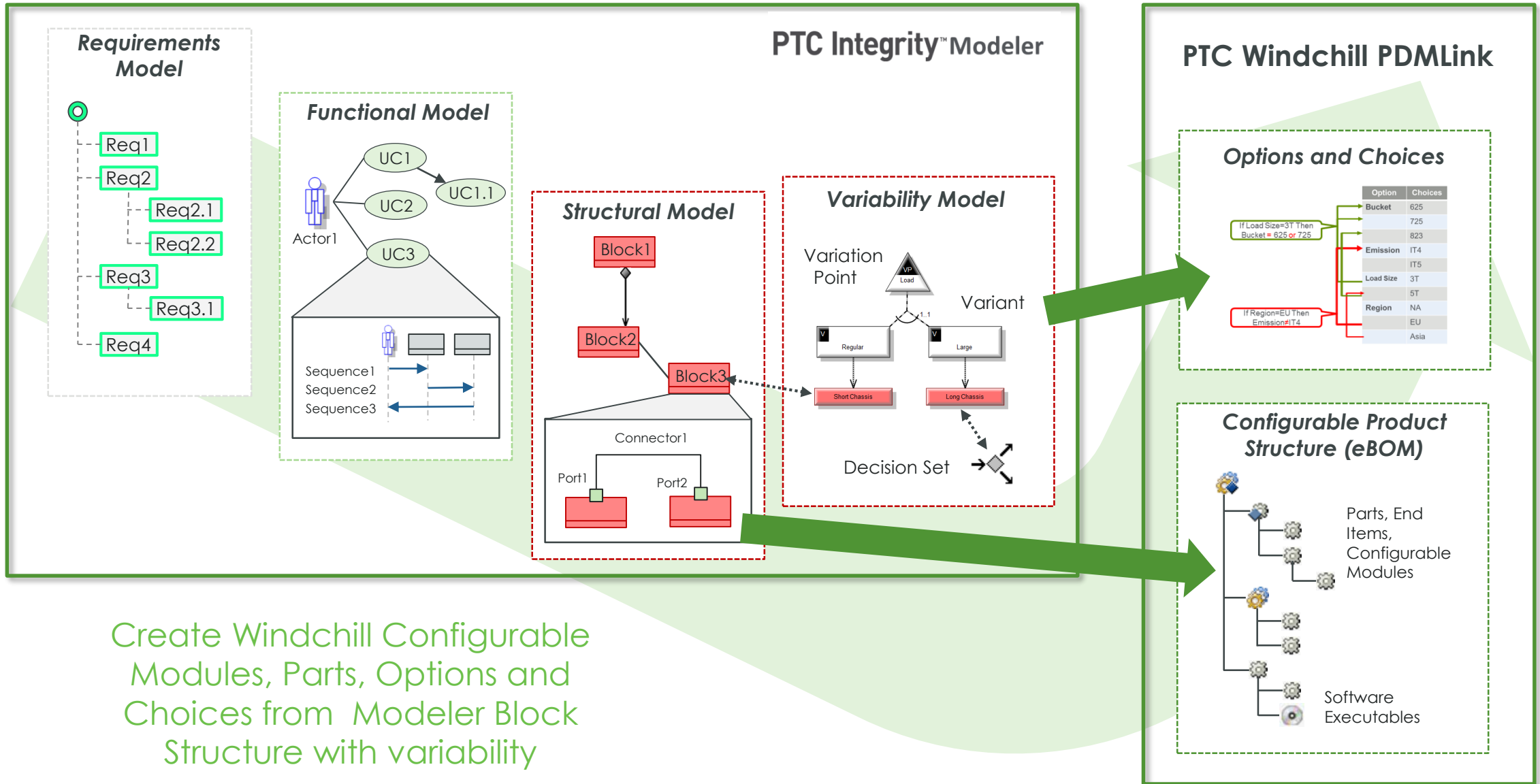
## Traceability

### PTC Navigate Manage Traces App

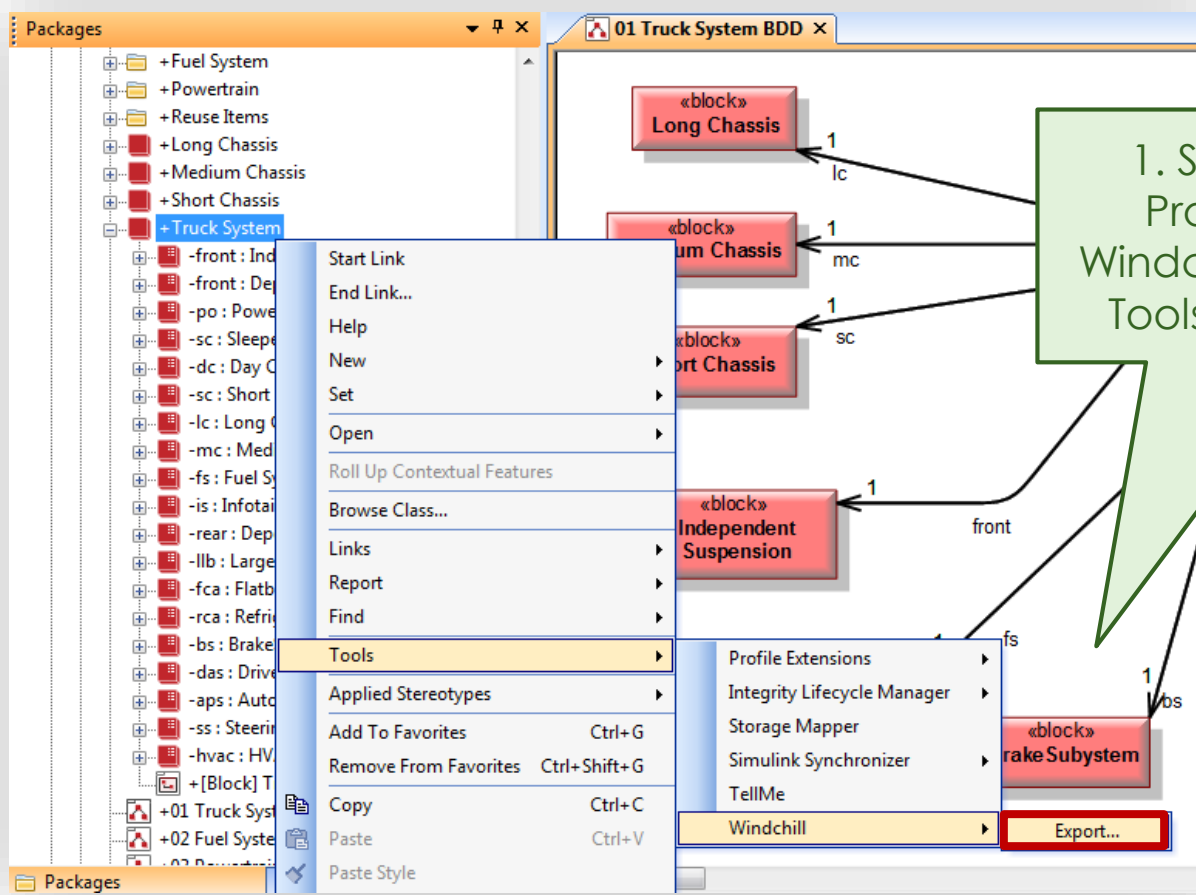


# MODELER TO WINDCHILL PRODUCTIVITY

# MODELER TO WINDCHILL PRODUCTIVITY

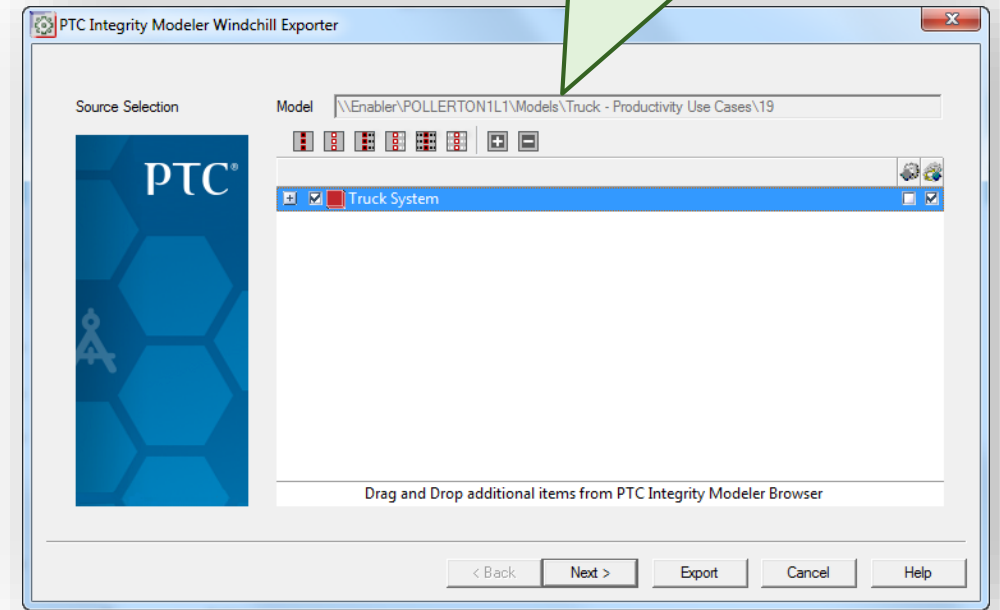


# MODELER TO WINDCHILL PRODUCTIVITY – STEP 1



2. Export tool will launch with the selected item and it's Block Properties

The Exporter can also be initiated from a Variation Point





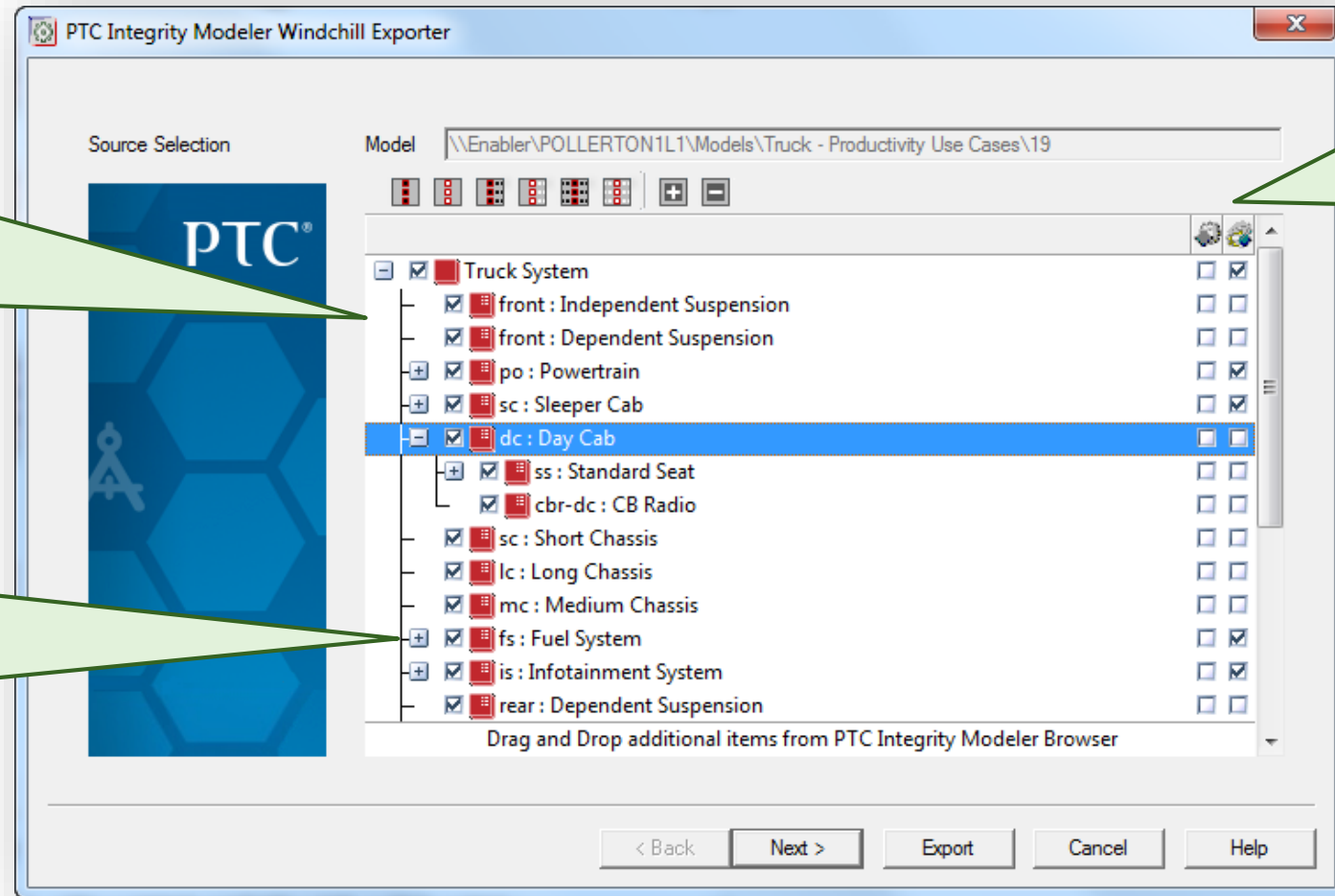
# MODELER TO WINDCHILL PRODUCTIVITY – STEP 2

1. Review and confirm the items selected for export

Drag and drop additional items from standard Modeler Browsers

2. Structure can be expanded/collapsed

Items can be marked as included/excluded for export



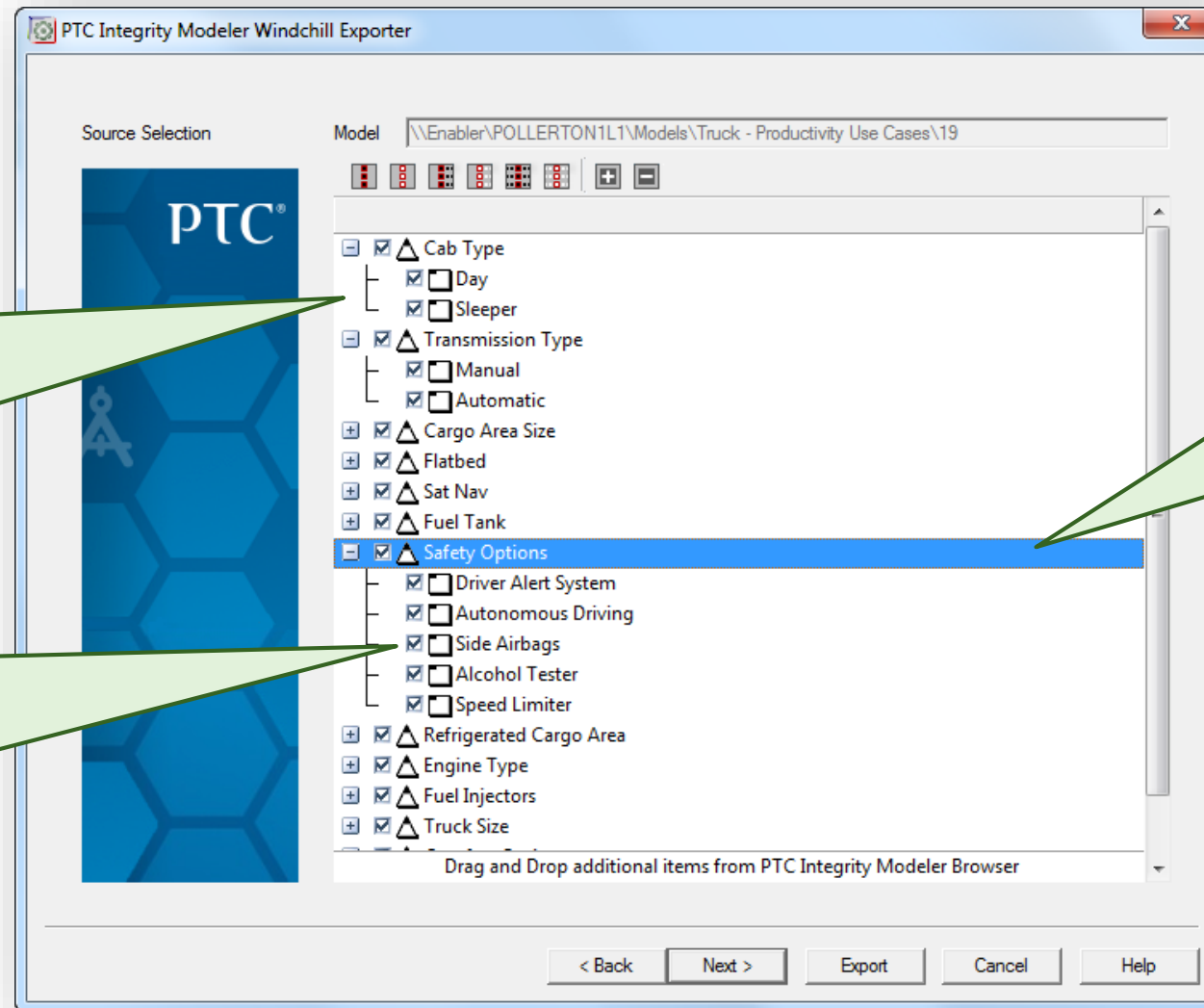
3. Items can be defined as Windchill PDMLink End Items or Configurable Modules

# MODELER TO WINDCHILL PRODUCTIVITY – STEP 3

1. If the included Blocks/Block Properties have related variability items, they are automatically included in step 2 of the Exporter

3. Review and confirm the variability items selected for export

Drag and drop additional items from standard Modeler Browsers



2. Structure can be expanded/collapsed

Items can be marked as included/excluded for export

# MODELER TO WINDCHILL PRODUCTIVITY – STEP 4

1. Specify an Export folder where the generated XML will be created

Configurations

Export Folder: D:\temp

Custom Configuration File: C:\Enabler\EnablerATFiles\WCExporterConfig.xml

Configurations for WTPart Items	
External Type ID	WCTYPE\wt.part.WTPart
Version ID	A
Version Position	1
Series	wt.series.HarvardSeries
Version Level	1
Iteration ID	1
Iteration Position	1
Iteration Series	wt.series.IntegerSeries
Lifecycle Template	Basic
Lifecycle State	INWORK
Number	00871
Number Format	%.5nextNr
Next Number	871
Number Increment	1
Trace Code	0
Type	separable
Source	make
Organization	OEM

< Back   Next >   **Export**   Cancel   Help

2. Optionally specify Windchill PDMLink object creation parameters

Values can be read from a configuration file or entered into the user interface

3. Once complete, click Export to generate XML

4. A log all items exported is created

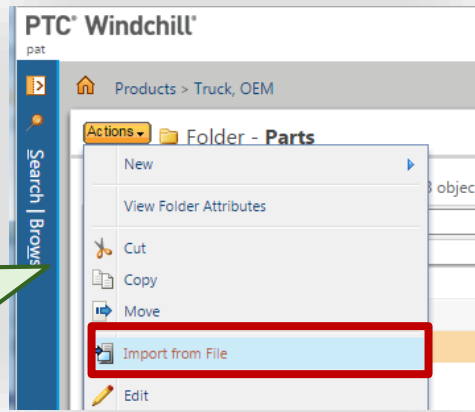
Export Log

```
0266 Exporting Choice 'Long Wheelbase'
0267 Exporting OptionSetMemberLink for Choice 'Long Wheelbase'
0268 Exporting OptionChoiceMasterLink between Option 'Truck Size' and Choice 'Long Wheelbase'
0269 Exporting Choice 'Short Wheelbase'
0270 Exporting OptionSetMemberLink for Choice 'Short Wheelbase'
0271 Exporting OptionChoiceMasterLink between Option 'Truck Size' and Choice 'Short Wheelbase'
0272 Exporting Choice 'Medium Wheelbase'
0273 Exporting OptionSetMemberLink for Choice 'Medium Wheelbase'
0274 Exporting OptionChoiceMasterLink between Option 'Truck Size' and Choice 'Medium Wheelbase'
0275 Exporting Option 'Comfort Options'
0276 Exporting Choice 'Heated Seats'
0277 Exporting OptionSetMemberLink for Choice 'Heated Seats'
0278 Exporting OptionChoiceMasterLink between Option 'Comfort Options' and Choice 'Heated Seats'
0279 Exporting Choice 'Steering Wheel Controls'
0280 Exporting OptionSetMemberLink for Choice 'Steering Wheel Controls'
0281 Exporting OptionChoiceMasterLink between Option 'Comfort Options' and Choice 'Steering Wheel Co
0282 Exporting Choice 'Bluetooth Connection'
0283 Exporting OptionSetMemberLink for Choice 'Bluetooth Connection'
0284 Exporting OptionChoiceMasterLink between Option 'Comfort Options' and Choice 'Bluetooth Connect
0285 Exporting Option 'Front Suspension'
0286 Exporting Choice 'Dependent'
0287 Exporting OptionSetMemberLink for Choice 'Dependent'
0288 Exporting OptionChoiceMasterLink between Option 'Front Suspension' and Choice 'Dependent'
0289 Exporting Choice 'Independent'
0290 Exporting OptionSetMemberLink for Choice 'Independent'
0291 Exporting OptionChoiceMasterLink between Option 'Front Suspension' and Choice 'Independent'
Export Complete --
```

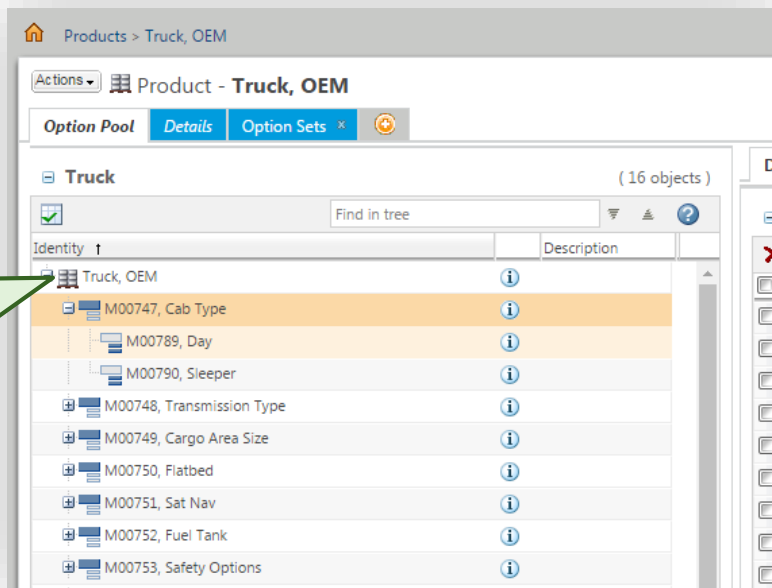
< Back   Next >   **Export**   Cancel   Help

# MODELER TO WINDCHILL PDMLINK PRODUCTIVITY – STEP 5

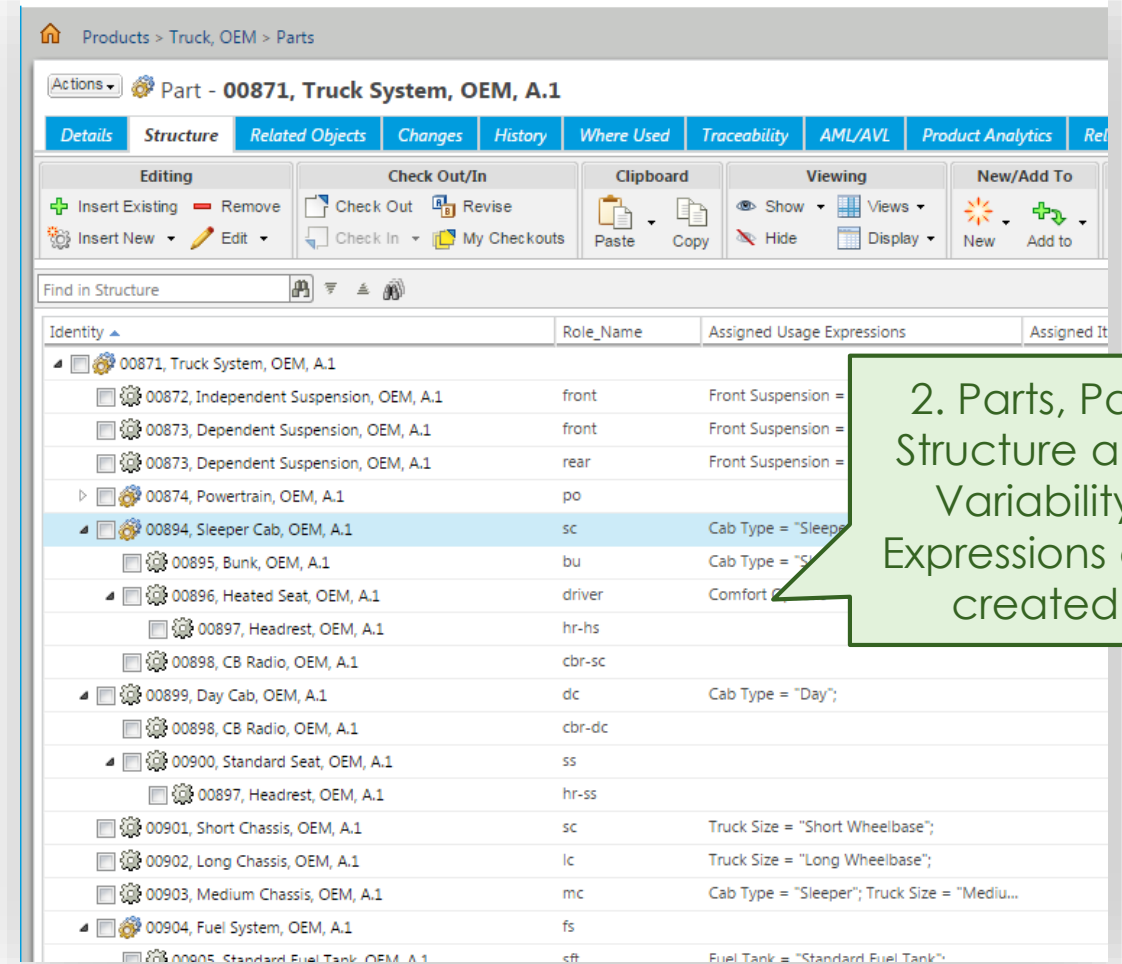
1. Import generated XML into Windchill PDMLink using standard import function



3. Options, Choices and Option Set are created

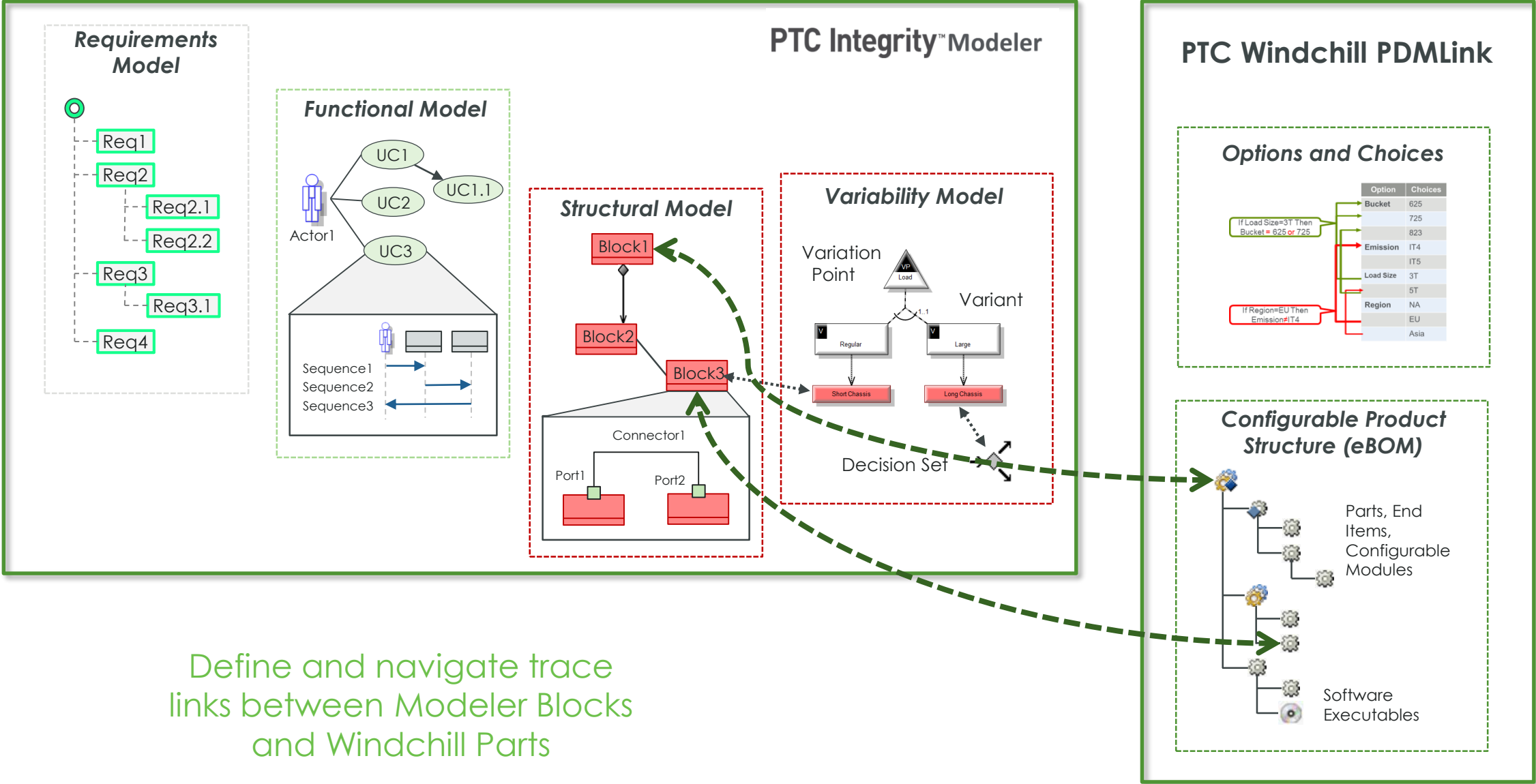


2. Parts, Part Structure and Variability Expressions are created



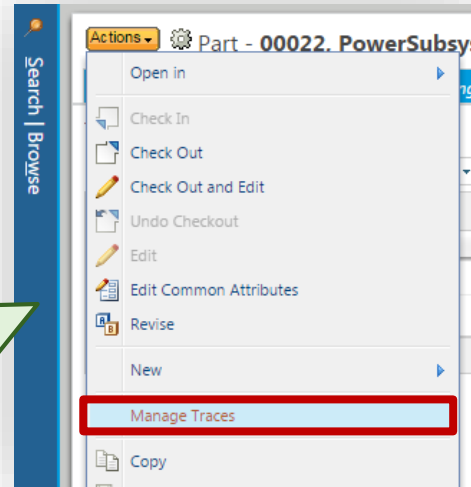
# MODELER TO WINDCHILL TRACEABILITY

# MODELER - WINDCHILL TRACEABILITY - INTRODUCTION



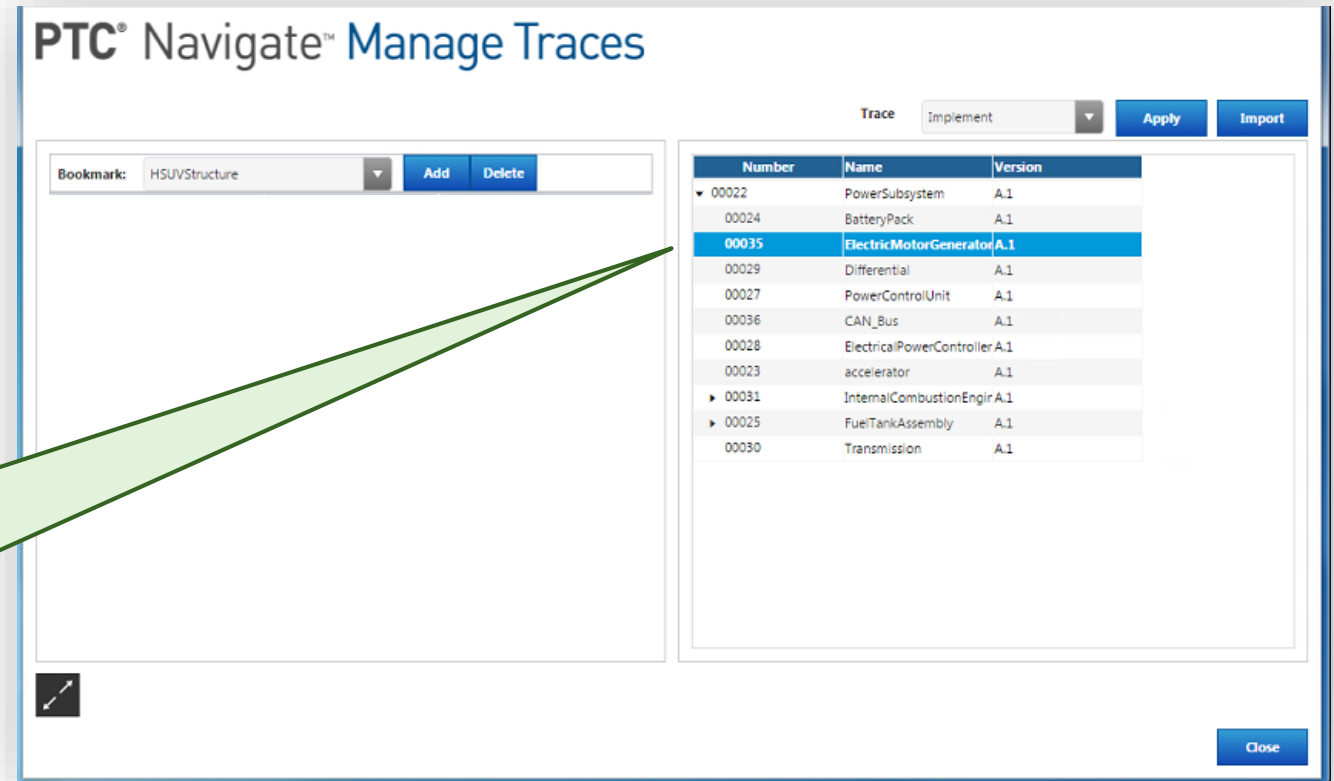
# MODELER AND WINDCHILL TRACEABILITY – STEP 1

1. Navigate to Windchill PDMLink Part and select Actions > Manage Traces



2. Manage Traces app is launched

Part used to launch app is shown, with it's structure



# MODELER AND WINDCHILL TRACEABILITY – STEP 2

The screenshot shows the 'PTC® Navigate™ Manage Traces' window. It is divided into two main sections. The left section displays a tree view of Modeler data under the bookmark 'HSUVStructure'. The right section displays a table of Windchill items. A red box highlights the 'Trace' dropdown menu, which is currently set to 'Implement', and the 'Apply' button. Below the main window, two detail panels are shown, one for the selected 'FuelRegulator' block and one for the selected 'ElectricMotorGenerator' trace link.

Number	Name	Version
00022	PowerSubsystem	A.1
00024	BatteryPack	A.1
00035	ElectricMotorGenerator	A.1
00029	Differential	A.1
00027	PowerControlUnit	A.1
00036	CAN_Bus	A.1
00028	ElectricalPowerController	A.1
00023	accelerator	A.1
00031	InternalCombustionEnginr	A.1
00025	FuelTankAssembly	A.1
00030	Transmission	A.1

Field	Value
Description	
Id	MProv:http://uk-che-devm-123.atego.test:57851/ModelerServ
FullScopedName	HSUVModel::HSUVStructure::FuelRegulator
Name	FuelRegulator
IsAbstract	FALSE

Property	Value
Number	00035
Name	ElectricMotorGenerator
Version	A.1
State	In Work

1. Browse Modeler data and select items

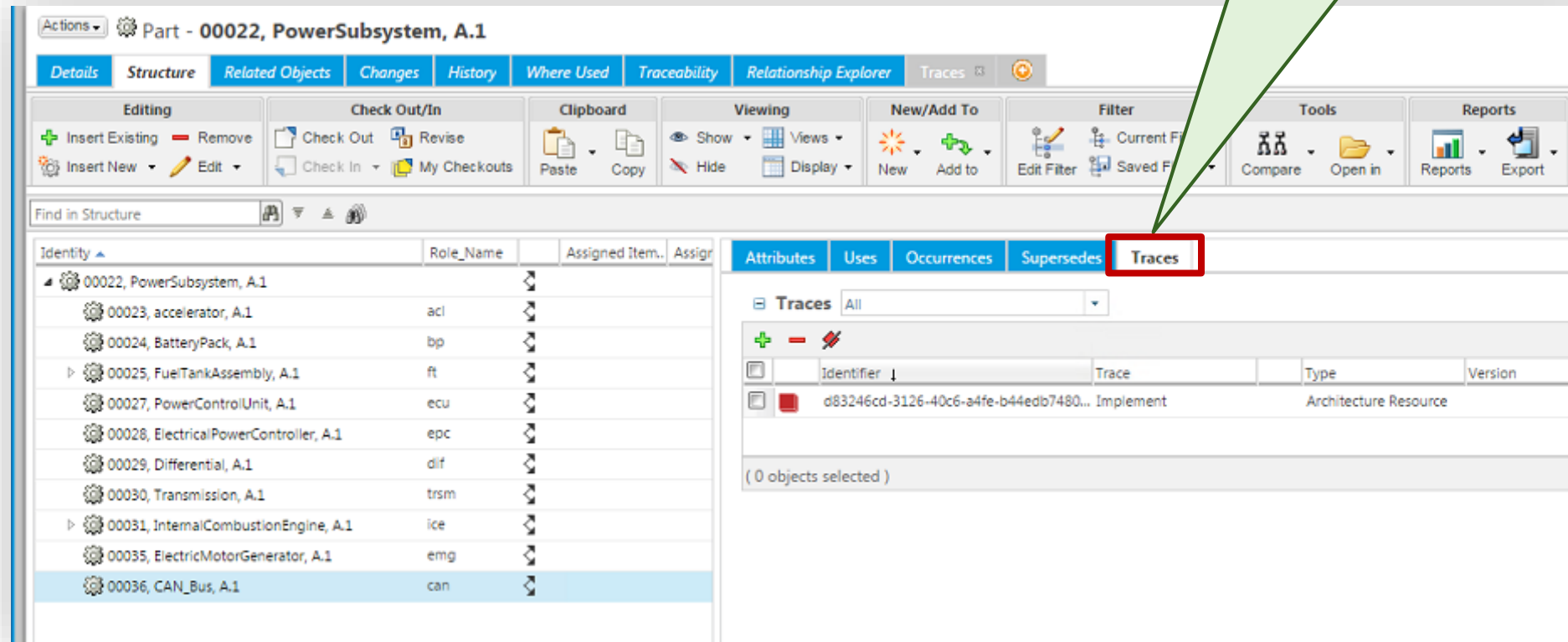
2. Select items on both sides and click Apply to create new trace links

3. View details and existing traces for selected item



# VIEWING TRACE LINKS IN WINDCHILL

Trace Links can be viewed in Windchill PDMLink Traces tables



The screenshot displays the Windchill software interface for a part named "Part - 00022, PowerSubsystem, A.1". The "Traces" tab is selected and highlighted with a red box. The interface includes a top navigation bar with tabs like "Details", "Structure", "Related Objects", "Changes", "History", "Where Used", "Traceability", "Relationship Explorer", and "Traces". Below this is a toolbar with various actions such as "Insert Existing", "Remove", "Check Out", "Revise", "Clipboard", "Viewing", "New/Add To", "Filter", "Tools", and "Reports". The main area is divided into two panes. The left pane shows a tree view of the part structure with the following items:

Identity	Role Name	Assigned Item	Assign
00022, PowerSubsystem, A.1			
00023, accelerator, A.1	acl		
00024, BatteryPack, A.1	bp		
00025, FuelTankAssembly, A.1	ft		
00027, PowerControlUnit, A.1	ecu		
00028, ElectricalPowerController, A.1	epc		
00029, Differential, A.1	dif		
00030, Transmission, A.1	trsm		
00031, InternalCombustionEngine, A.1	ice		
00035, ElectricMotorGenerator, A.1	emg		
00036, CAN_Bus, A.1	can		

The right pane shows the "Traces" table with the following data:

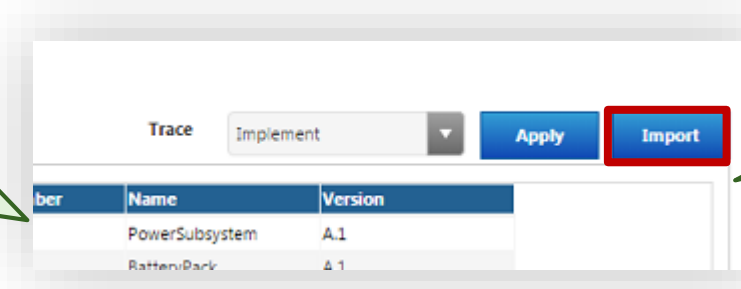
Identifier	Trace	Type	Version
d83246cd-3126-40c6-a4fe-b44edb7480...	Implement	Architecture Resource	

Below the table, it indicates "(0 objects selected)".

# MODELER AND WINDCHILL TRACEABILITY – BULK

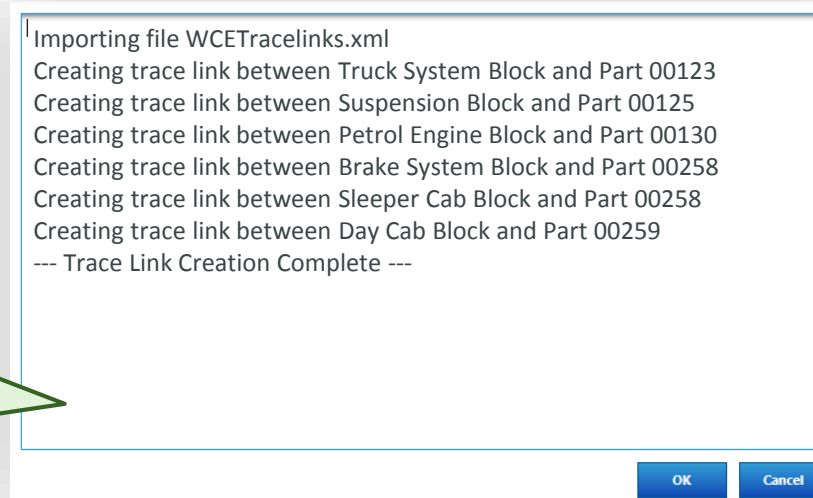
1. Trace Links can also be created in bulk using XML

This should be used after executing the Windchill Exporter to create trace links between the exported Modeler items and the imported Windchill items



2. Launch Trace App and select Import

3. Select XML file and click OK to import and create trace links



## Trace Link Types

PTC Navigate Manage Traces Modeler Extension provides the following trace link type:

- **Implement** — Links a Windchill PDMLink part to a Modeler system block. The link indicates Windchill PDMLink objects that are an implementation (mechanical, electrical or software design) of system design entities, such as blocks.

## Suspect Flags

Suspect flags on trace links indicate to users who are working with downstream objects, such as parts, that modifications have been made to the linked upstream objects, such as system blocks. Marking links as suspect provides an easy way to notify other users that the link may be invalid, and should be reviewed.

A trace link is automatically considered suspect if an update has occurred to the traced item after the trace link was created, or since the last time the suspect flag was cleared. Trace links can also be marked as suspect manually within the Traces table in Windchill PDMLink. Once a suspect trace link has been reviewed, the suspect flag can be manually cleared, or if required, the trace link can be removed.

## **Version Behavior**

- Implement trace links are version specific, meaning they link a specific version of a Windchill PDMLink item (e.g. part) with a specific model version of a Modeler item (e.g. block).
- When a Windchill item is iterated or revised, trace links are copied forward to the new iteration or version of the Windchill PDMLink item. When a Modeler model is revised, trace links are not updated to link to the new version of the Modeler item.

## **Save As Behavior**

- When a Windchill PDMLink item (e.g. part) with an Implement trace link is used for a Save As operation, the trace link is copied forward to the new item.

## **Clone Behavior**

- When a Modeler item (e.g. block) that has an Implement trace link to it is cloned, the trace link is not copied to the new cloned item.

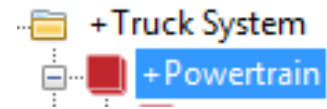
# DETAILED USE CASES - TRACEABILITY

# TUC 1 - LINK WINDCHILL PART TO MODELER BLOCK (ONE TO ONE)

## Modeler Item Types

Block
Block Property
Implement Link
Composite Aggregation
Variation Point
Variant
Artifact Dependency
Generalization
Decision Set

## Modeler Blocks (Part Browser View)



## Windchill Part



Implement Trace Link

## Scenario:

- The user launches the Manage Traces app
- The user selects a single Modeler Block and a single Windchill Part
- The user is able to create an “Implement” traceability link between the selected items (This is an example of a one to one trace link)
- The user is able to view and delete the link depending on permissions

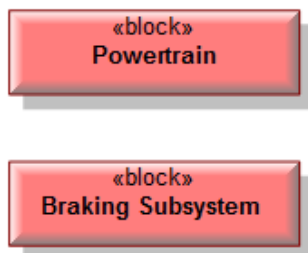
## Windchill Item Types

Part
Implement Link
Part Usage Link
End Item Part
Configurable End Item Part
Configurable Module
Option
Choice
Variant Specification

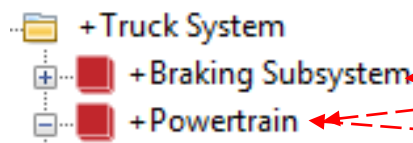
# TUC 2 - LINK WINDCHILL PART TO MODELER BLOCK (MANY TO MANY)

## Modeler Item Types

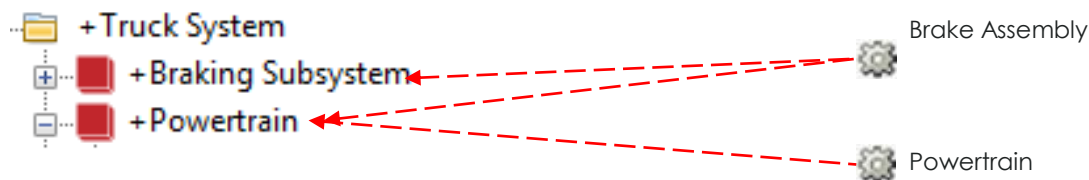
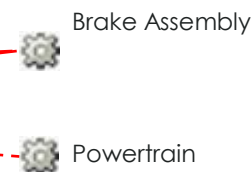
Block	
Block Property	
Implement Link	
Composite Aggregation	
Variation Point	
Variant	
Artifact Dependency	
Generalization	
Decision Set	



## Modeler Blocks (Part Browser View)



## Windchill Parts



## Windchill Item Types

Part	
Implement Link	
Part Usage Link	
End Item Part	
Configurable End Item Part	
Configurable Module	
Option	
Choice	
Variant Specification	

An extension on TUC 1, except with many to many trace links.

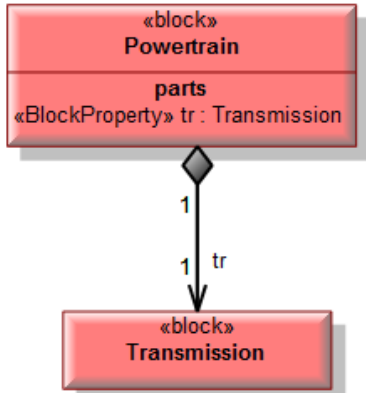
### Scenario:

- The user launches the Manage Traces app
- The user is able to create trace links from a single Part to multiple Blocks
- The user is able to create trace links from multiple Parts to the same Block
- The user is able to view and delete the link depending on permissions

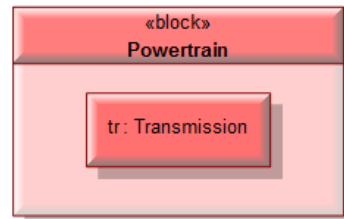
# TUC 3 - LINK WINDCHILL PART STRUCTURE TO MODELER BLOCK STRUCTURE

## Modeler Item Types

Block	
Block Property	
Implement Link	
Composite Aggregation	
Variation Point	
Variant	
Artifact Dependency	
Generalization	
Decision Set	

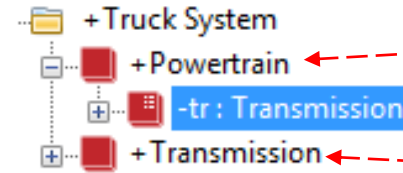


Block Definition Diagram

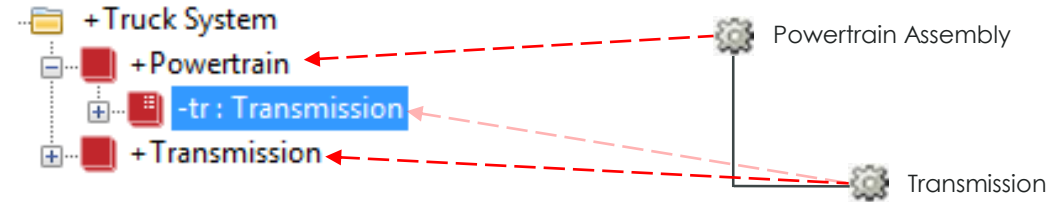


Internal Block Diagram

## Modeler Block Structure (Part Browser View)



## Windchill Part Structure



## Scenario:

- The user launches the Manage Traces app
- The user is able to expand the structures and select Parts, Blocks and Block Property items
- The user is able to create "Implement" traceability links between items at different levels in the structure hierarchy
  - **If the user select a Block Property, the link is created to the Block that types that Block Property**
  - The Block Property does effectively also have the link, as it is an instance of the Block
- The user is able to view and delete the links depending on permissions

## Windchill Item Types

Part	
Implement Link	
Part Usage Link	
End Item Part	
Configurable End Item Part	
Configurable Module	
Option	
Choice	
Variant Specification	

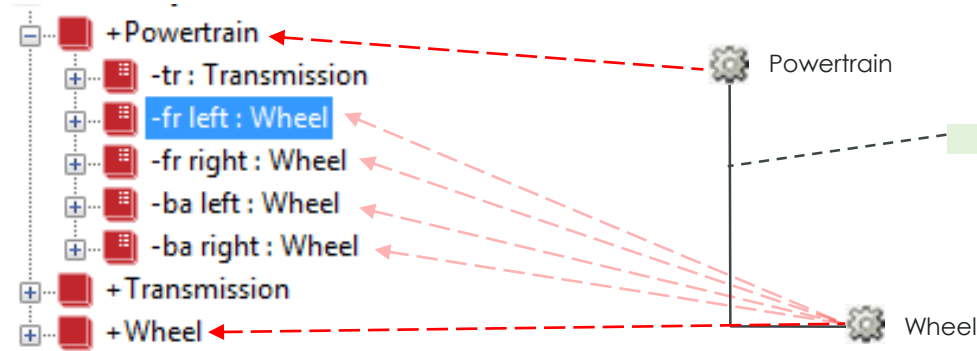


# TUC 4 - LINK WINDCHILL PART STRUCTURE TO MODELER BLOCK STRUCTURE WITH BLOCK PROPERTY MULTIPLICITY > 1

## Modeler Item Types

Block	
Block Property	
Implement Link	
Composite Aggregation	
Variation Point	
Variant	
Artifact Dependency	
Generalization	
Decision Set	

## Modeler Block Structure (Part Browser View)



## Windchill Part Structure

## Windchill Item Types

Part	
Implement Link	
Part Usage Link	
End Item Part	
Configurable End Item Part	
Configurable Module	
Option	
Choice	
Variant Specification	

## Scenario:

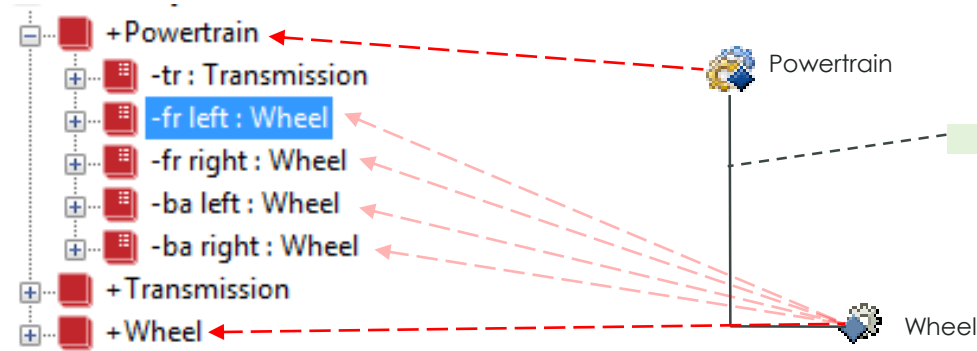
- The user launches the Manage Traces app
- The user selects a Block Property typed by the Wheel Block or the Wheel Block itself and a Windchill Part
- The user is able to create “Implement” traceability links between the selected items
- The user is able to view and delete the links depending on permissions

# TUC 5 - LINK WINDCHILL PART STRUCTURE TO MODELER BLOCK STRUCTURE WITH BLOCK PROPERTY MULTIPLICITY > 1

## Modeler Item Types

Block	
Block Property	
Implement Link	
Composite Aggregation	
Variation Point	
Variant	
Artifact Dependency	
Generalization	
Decision Set	

## Modeler Block Structure (Part Browser View)



## Windchill Part Structure

## Windchill Item Types

Part	
Implement Link	
Part Usage Link	
End Item Part	
Configurable End Item Part	
Configurable Module	
Option	
Choice	
Variant Specification	

Scenario:

- Same as UC 4 except:
- The user is able to create Implement links from End Item Parts, Configurable Module Parts or Configurable End Item Parts

# TRACE LINKING BETWEEN VARIABILITY OBJECTS

Modeler  
Item Types

Block
Block Property
Implement Link
Composite Aggregation
Variation Point
Variant
Artifact Dependency
Generalization
Decision Set

Variability WC objects are not exposed via ThingWorx currently.  
This capability is planned for a future release

Windchill  
Item Types

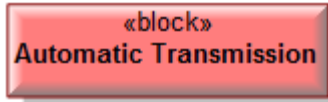
Part
Implement Link
Part Usage Link
End Item Part
Configurable End Item Part
Configurable Module
Option
Choice
Variant Specification

# DETAILED USE CASES - PRODUCTIVITY

# PUC 1: CREATE WINDCHILL PART FROM A MODELER BLOCK

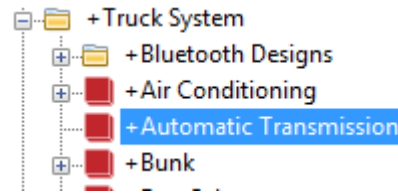
## Modeler Item Types

Block
Block Property
Implement Link
Composite Aggregation
Variation Point
Variant
Artifact Dependency
Generalization
Decision Set



Block Definition Diagram

## Modeler Block (Part Browser View)



## Windchill Part



## Windchill Item Types

Part
Implement Link
Part Usage Link
End Item Part
Configurable End Item Part
Configurable Module
Option
Choice
Variant Specification

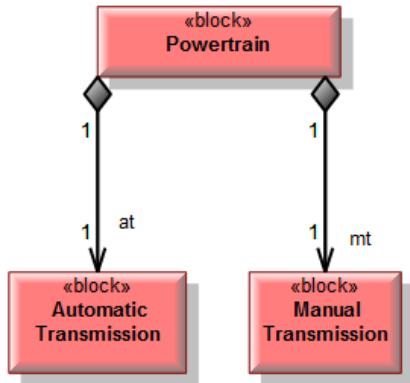
### Scenario:

- Assume no data has been previously exported/imported
- The user selects a single Modeler Block (Automatic Transmission) that has no Block Property items (no child items) and launches the Windchill Exporter function
- Export files are created and the user then imports into Windchill
- The system creates a Windchill Part based on the Block, with matching Name
- The system will optionally create an "Implement" trace link from the Automatic Transmission Part to the Automatic Transmission Block (this is done using the Manage Traces app)

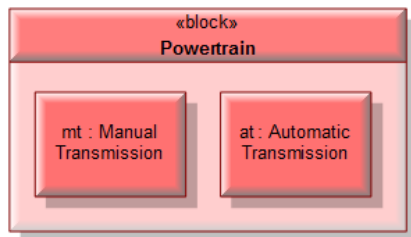
# PUC 2: CREATE WINDCHILL PART FROM A MODELER BLOCK PROPERTY

## Modeler Item Types

Block	
Block Property	
Implement Link	
Composite Aggregation	
Variation Point	
Variant	
Artifact Dependency	
Generalization	
Decision Set	

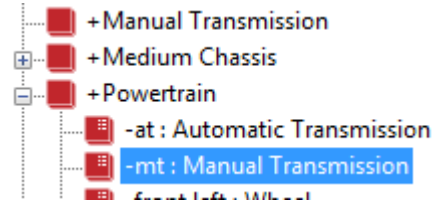


Block Definition Diagram



Internal Block Diagram

## Modeler Block Structure (Part Browser View)



## Windchill Part



## Windchill Item Types

Part	
Implement Link	
Part Usage Link	
End Item Part	
Configurable End Item Part	
Configurable Module	
Option	
Choice	
Variant Specification	

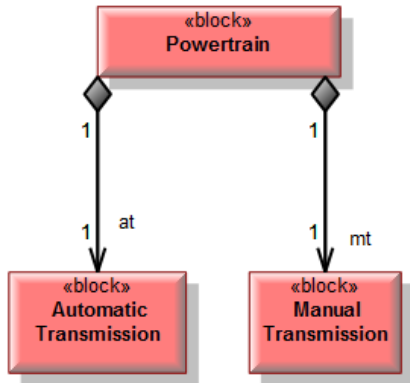
## Scenario:

- Assume no data has been previously exported/imported
- The user selects a single Modeler Block Property (mt : Manual Transmission), does not select its parent item (Powertrain) and launches the Windchill Exporter
- Export files are created and the user then imports into Windchill
- The system creates a Windchill Part called Manual Transmission based on the Block that types the selected Block Property
  - Because the Powertrain Block was not included in the export, the system will not create a Powertrain Part or Part Usage link
- The system will optionally create an "Implement" trace link from the Manual Transmission Part to the Manual Transmission Block (using the Manage Traces app)
- If the user selected the Manual Transmission Block for export the result would be the same

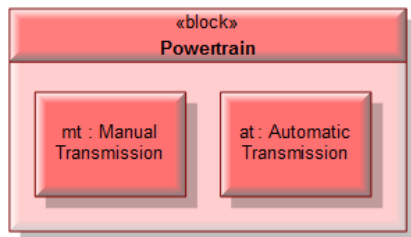
# PUC 3: CREATE WINDCHILL PART STRUCTURE FROM A MODELER BLOCK STRUCTURE

## Modeler Item Types

Block	
Block Property	
Implement Link	
Composite Aggregation	
Variation Point	
Variant	
Artifact Dependency	
Generalization	
Decision Set	

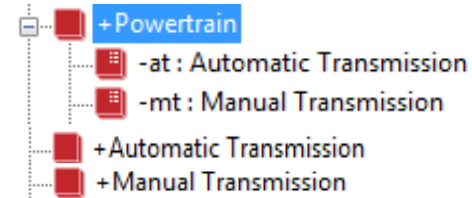


Block Definition Diagram

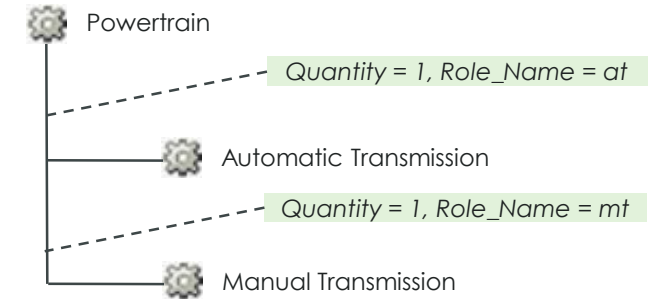


Internal Block Diagram

## Modeler Block Structure (Part Browser View)



## Windchill Parts



## Windchill Item Types

Part	
Implement Link	
Part Usage Link	
End Item Part	
Configurable End Item Part	
Configurable Module	
Option	
Choice	
Variant Specification	

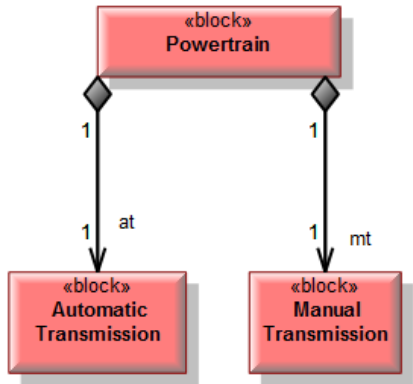
## Scenario:

- Assume no data has been previously exported/imported
- The user selects a Block (Powertrain) and launches the Windchill Exporter
  - The system automatically selects the child Block Property items
- Export files are created and the user then imports into Windchill
- The system creates Windchill Parts called Powertrain, Automatic Transmission and Manual Transmission
- The system creates Part Usage links based on Modeler Composite Aggregation relationship
  - May be displayed as a Block Property on an Internal Block Diagram (same link in the underlying data)
  - For each Block Property, the system will create one Part Usage link (with Quantity=1)
  - The Block Property name (if one exists) is copied to a soft attribute on the Part Usage link. By default this soft attribute is called Role\_Name
- The system will optionally create "Implement" trace links from the Parts to the corresponding Blocks

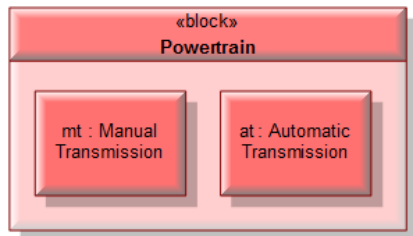
# PUC 4: CREATE WINDCHILL PART STRUCTURE FROM A MODELER BLOCK STRUCTURE

## Modeler Item Types

Block	
Block Property	
Implement Link	
Composite Aggregation	
Variation Point	
Variant	
Artifact Dependency	
Generalization	
Decision Set	

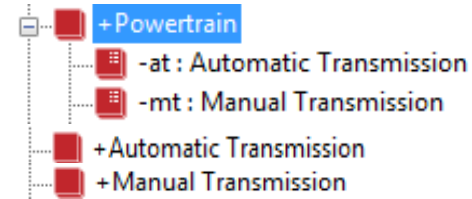


Block Definition Diagram

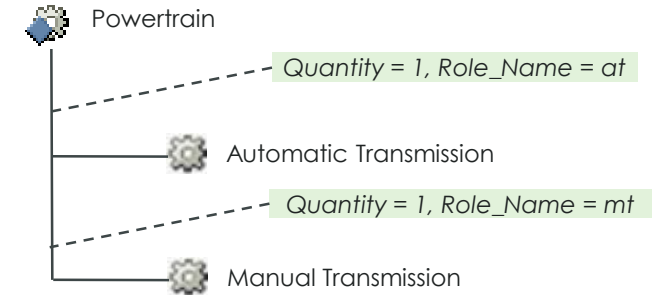


Internal Block Diagram

## Modeler Block Structure (Part Browser View)



## Windchill Parts



## Scenario:

- Extension of UC 3, except this provides the ability to create Parts as End Item Parts

## Windchill Item Types

Part	
Implement Link	
Part Usage Link	
End Item Part	
Configurable End Item Part	
Configurable Module	
Option	
Choice	
Variant Specification	



# PUC 5: CREATE WINDCHILL PART STRUCTURE FROM A MODELER BLOCK STRUCTURE

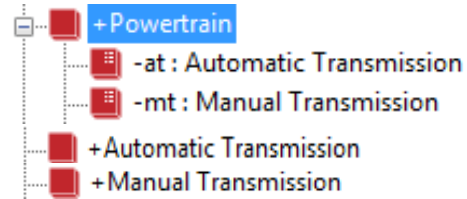
## Modeler Item Types

Block	
Block Property	
Implement Link	
Composite Aggregation	
Variation Point	
Variant	
Artifact Dependency	
Generalization	
Decision Set	

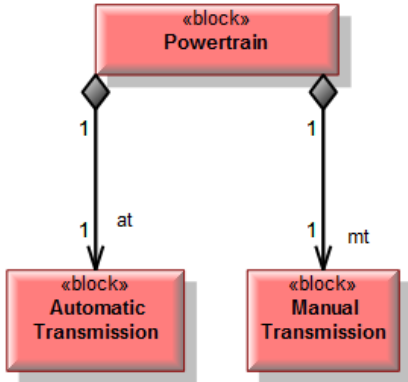
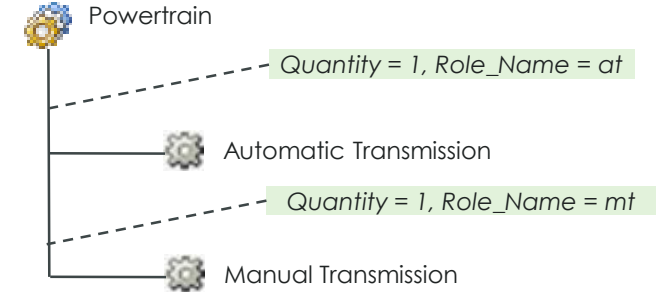
## Windchill Item Types

Part	
Implement Link	
Part Usage Link	
End Item Part	
Configurable End Item Part	
Configurable Module	
Option	
Choice	
Variant Specification	

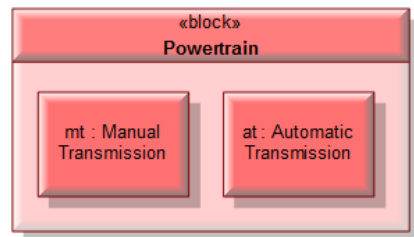
## Modeler Block Structure (Part Browser View)



## Windchill Parts



Block Definition Diagram



Internal Block Diagram

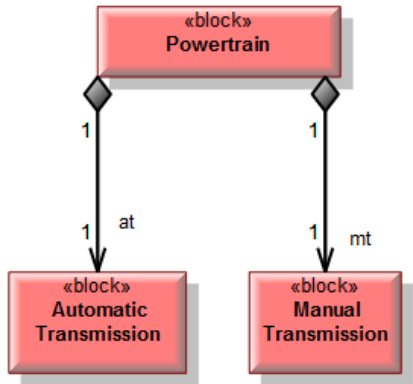
## Scenario:

- Extension of UC 3, except this provides the ability to create Parts as Configurable Module Parts

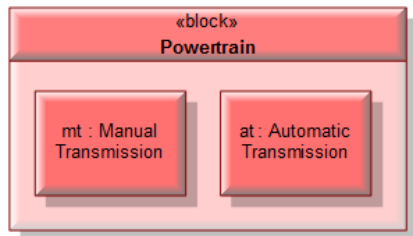
# PUC 6: CREATE WINDCHILL PART STRUCTURE FROM A MODELER BLOCK STRUCTURE

## Modeler Item Types

Block	
Block Property	
Implement Link	
Composite Aggregation	
Variation Point	
Variant	
Artifact Dependency	
Generalization	
Decision Set	

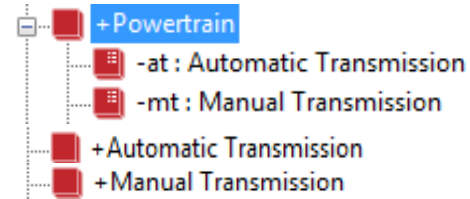


Block Definition Diagram

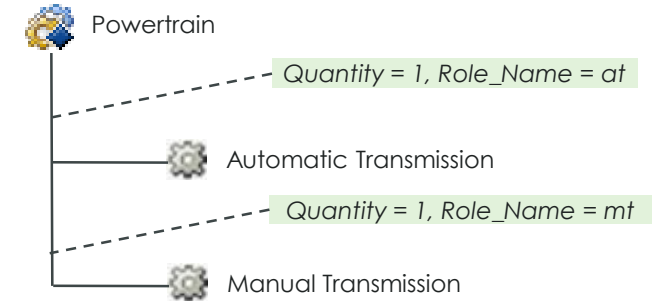


Internal Block Diagram

## Modeler Block Structure (Part Browser View)



## Windchill Parts



## Scenario:

- Extension of UC 3, except this provides the ability to create Parts as Configurable End Item Parts

## Windchill Item Types

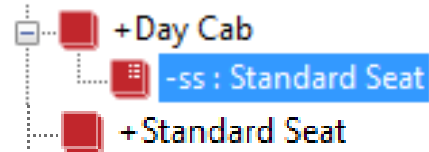
Part	
Implement Link	
Part Usage Link	
End Item Part	
Configurable End Item Part	
Configurable Module	
Option	
Choice	
Variant Specification	

# PUC 7: CREATE WINDCHILL PART FROM A MODELER BLOCK PROPERTY (WITH EXISTING ITEMS)

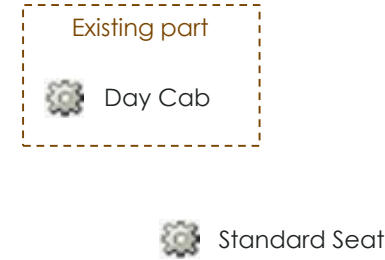
## Modeler Item Types

Block	
Block Property	
Implement Link	
Composite Aggregation	
Variation Point	
Variant	
Artifact Dependency	
Generalization	
Decision Set	

## Modeler Block Structure (Part Browser View)



## Windchill Parts



## Windchill Item Types

Part	
Implement Link	
Part Usage Link	
End Item Part	
Configurable End Item Part	
Configurable Module	
Option	
Choice	
Variant Specification	

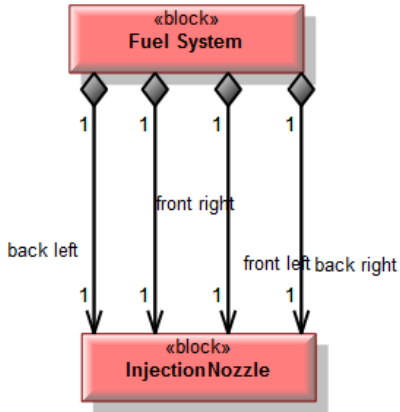
### Scenario:

- Assume the Day Cab Block was previously exported/imported and the Day Cab Part exists in Windchill
- The user selects the ss : Standard Seat Block Property and launches the Windchill Exporter
- Export files are created and the user then imports into Windchill
- The system creates the Standard Seat Part
  - **Part Usage link is not created (system will not create links to existing Windchill items)**
- The system will optionally create an "Implement" trace link from the Standard Seat Part to the Standard Seat Block

# PUC 8: CREATE WINDCHILL PART STRUCTURE FROM A MODELER BLOCK STRUCTURE WITH BLOCK PROPERTY MULTIPLICITY > 1

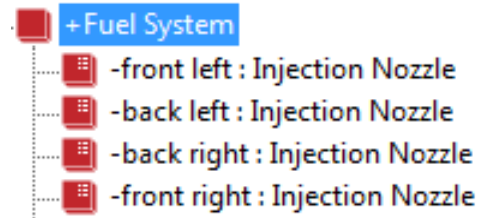
## Modeler Item Types

Block	
Block Property	
Implement Link	
Composite Aggregation	
Variation Point	
Variant	
Artifact Dependency	
Generalization	
Decision Set	

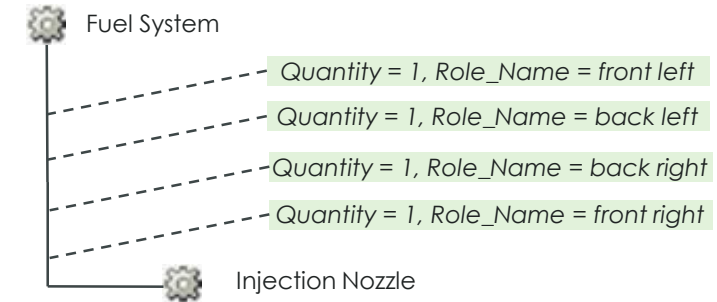


Block Definition Diagram

## Modeler Block Structure (Part Browser View)



## Windchill Part Structure



## Windchill Item Types

Part	
Implement Link	
Part Usage Link	
End Item Part	
Configurable End Item Part	
Configurable Module	
Option	
Choice	
Variant Specification	

### Scenario:

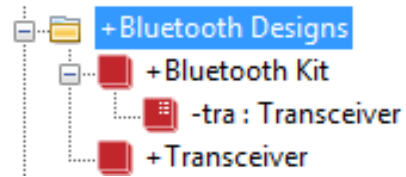
- Assume no data has been previously exported/imported
- The user selects the Fuel System Block and launches the Windchill Exporter
- The system automatically selects the child Block Property items
- Export files are created and the user then imports into Windchill
- The system creates 2 Windchill Parts: Fuel System and Injection Nozzle
- The system creates 4 Part Usage links based on Composite Aggregation relationships and the multiplicity
  - All 4 Part Usage links are to the same Injection Nozzle Part
- The system will optionally create an "Implement" trace links from the Parts to the corresponding Blocks

# PUC 9 – CREATE WINDCHILL PART STRUCTURE FROM MODELER BLOCK STRUCTURE USING PACKAGES

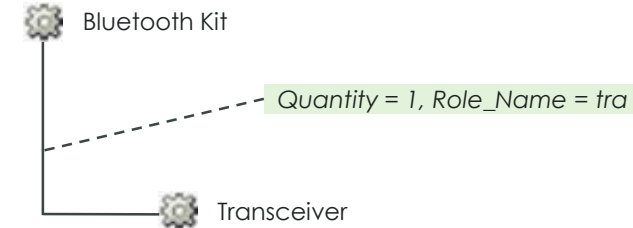
## Modeler Item Types

Block	
Block Property	
Implement Link	
Composite Aggregation	
Variation Point	
Variant	
Artifact Dependency	
Generalization	
Decision Set	

## Modeler Block Structure (Part Browser View)



## Windchill Part Structure



## Windchill Item Types

Part	
Implement Link	
Part Usage Link	
End Item Part	
Configurable End Item Part	
Configurable Module	
Option	
Choice	
Variant Specification	

### Scenario:

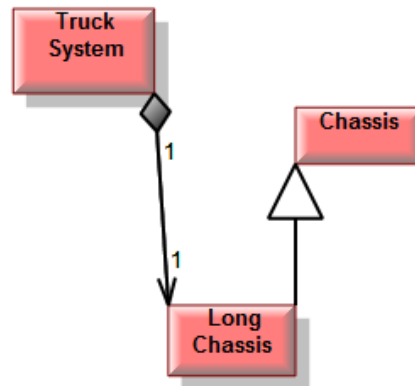
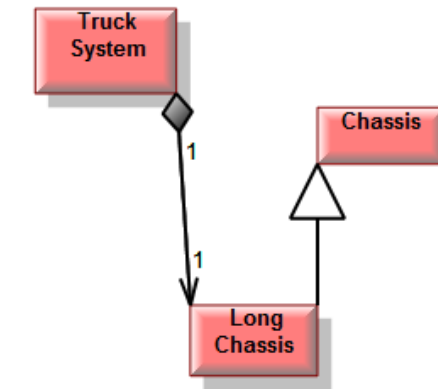
- Assume no data has been previously exported/imported
- The user selects the Bluetooth Designs Package and launches the Windchill Exporter
  - All items and items in sub-packages are selected for export
- Export files are created and the user then imports into Windchill
- The system will optionally create an “Implement” trace links from the Parts to the corresponding Blocks

# PUC 10 - CREATE WINDCHILL PART STRUCTURE BASED ON MODELER BLOCK STRUCTURE WITH GENERALIZATION LINK

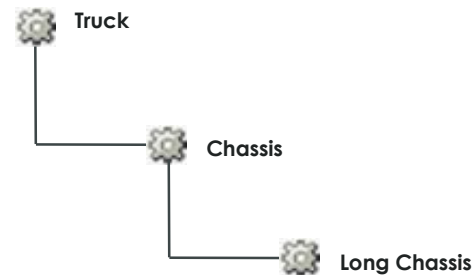
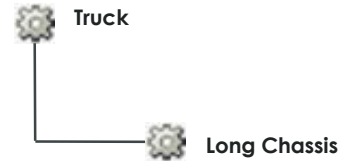
## Modeler Item Types

Block	
Block Property	
Implement Link	
Composite Aggregation	
Variation Point	
Variant	
Artifact Dependency	
Generalization	
Decision Set	

## Modeler Block Structure (Part Browser View)



## Windchill Part Structure



## Scenario:

- The user selects the Truck System Block and launches the Windchill Exporter
- Export files are created and the user then imports into Windchill
- The system will optionally create an “Implement” trace links from the Parts to the corresponding Blocks
- The “super block” (Chassis) and generalization association are ignored

This is not a logical mapping, the Chassis items are not equivalent so the hierarchical links do not correspond.

**This scenario is not supported**

## Windchill Item Types

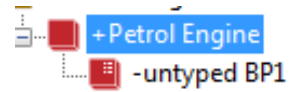
Part	
Implement Link	
Part Usage Link	
End Item Part	
Configurable End Item Part	
Configurable Module	
Option	
Choice	
Variant Specification	

# PUC 11 – CREATE WINDCHILL PART BASED ON MODELER UNTYPED BLOCK PROPERTY

## Modeler Item Types

Block	
Block Property	
Implement Link	
Composite Aggregation	
Variation Point	
Variant	
Artifact Dependency	
Generalization	
Decision Set	

## Modeler Block Structure (Part Browser View)



## Windchill Part Structure



## Scenario

- Assume no data has been previously exported/imported
- Exporting Block Properties that are untyped is not supported

## Windchill Item Types

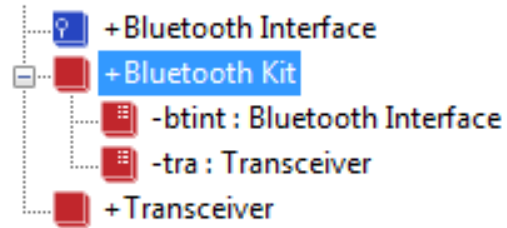
Part	
Implement Link	
Part Usage Link	
End Item Part	
Configurable End Item Part	
Configurable Module	
Option	
Choice	
Variant Specification	

# PUC 12 – CREATE WINDCHILL PART BASED ON MODELER INTERFACE BLOCK OR BLOCK PROPERTY

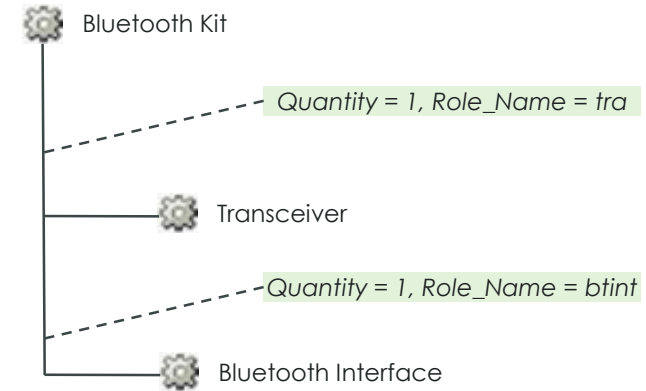
## Modeler Item Types

Block	
Block Property	
Implement Link	
Composite Aggregation	
Variation Point	
Variant	
Artifact Dependency	
Generalization	
Decision Set	

## Modeler Block Structure (Part Browser View)



## Windchill Part Structure



## Windchill Item Types

Part	
Implement Link	
Part Usage Link	
End Item Part	
Configurable End Item Part	
Configurable Module	
Option	
Choice	
Variant Specification	

## Scenario:

- Assume no data has been previously exported/imported
- The user select the Bluetooth Kit Block for export
- The system automatically selects the child Block Property items
- Export files are created and the user then imports into Windchill
- The system will optionally create “Implement” trace links from the Parts to the corresponding Blocks

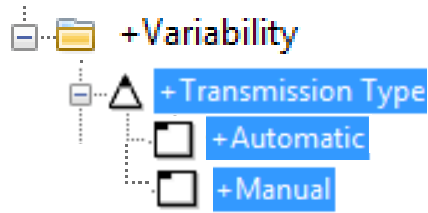


# PUC 13 – CREATE WINDCHILL OPTION/CHOICE BASED ON MODELER VARIATION POINT/VARIANT

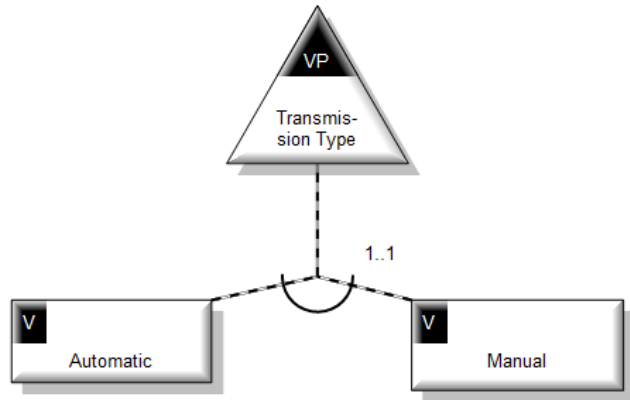
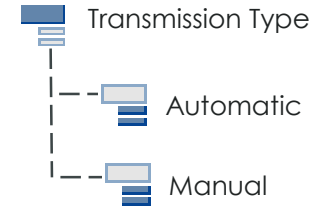
## Modeler Item Types

Block	
Block Property	
Implement Link	
Composite Aggregation	
Variation Point	
Variant	
Artifact Dependency	
Generalization	
Decision Set	

## Modeler Variability Items



## Windchill Option and Choices



Variant Diagram

## Scenario:

- Assume no data has been previously exported/imported
- User selects Variation Point for export
- System should automatically select all dependent Variants
  - Do not allow variants to be de-selected
  - Alternative Choice between items not displayed
- The system will generate XML to create:
  - Options based on Variation Points
    - If Variation Point set to Mandatory the Option is "Required"
  - Choices based on Variants
  - OptionChoiceMasterLink based on Optional Dependency (between Variant and VP)
  - Alternative Choice items drives Option attributes
- The system will create Implement trace links **(planned for future release)**

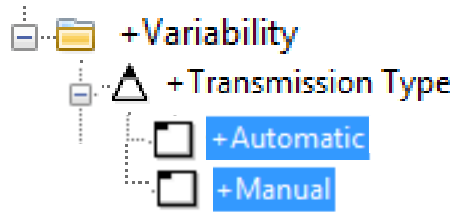
## Windchill Item Types

Part	
Implement Link	
Part Usage Link	
End Item Part	
Configurable End Item Part	
Configurable Module	
Option	
Choice	
Variant Specification	

# PUC 14 – CREATE WINDCHILL CHOICE BASED ON MODELER VARIANT

## Modeler Item Types

Block
Block Property
Implement Link
Composite Aggregation
Variation Point
Variant
Artifact Dependency
Generalization
Decision Set



## Windchill Item Types

Part
Implement Link
Part Usage Link
End Item Part
Configurable End Item Part
Configurable Module
Option
Choice
Variant Specification

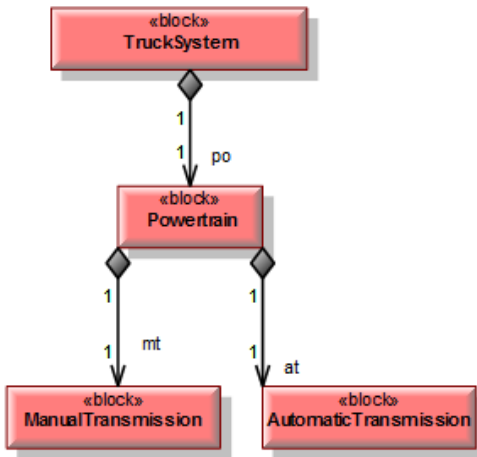
## Scenario

- User selects one or more Variants, without including the owning Variation Point
- **This use case is not supported**
  - Variants on their own can not be exported, they must be exported with a related Variation Point
  - Will not be possible to de-select a Variation Point without also de-selecting it's Variants

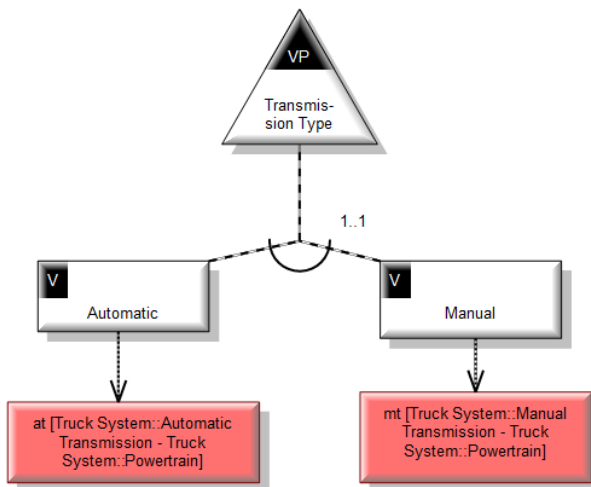
# PUC 15 – CREATE WINDCHILL CONFIGURABLE PART STRUCTURE BASED ON MODELER BLOCK OR BLOCK PROPERTY WITH VARIABILITY

## Modeler Item Types

Block	
Block Property	
Implement Link	
Composite Aggregation	
Variation Point	
Variant	
Artifact Dependency	
Generalization	
Decision Set	

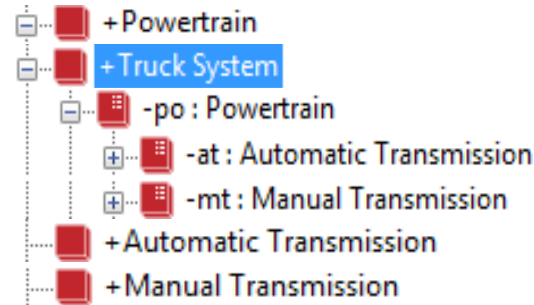


Block Definition Diagram

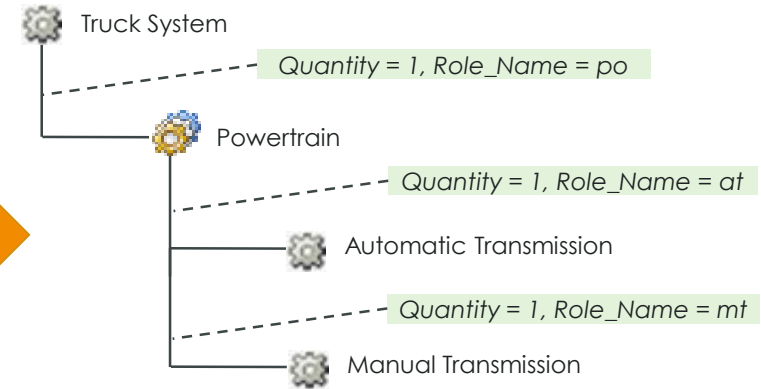


Variant Diagram

## Modeler Block Structure (Part Browser View)



## Windchill Part Structure



## Windchill Item Types

Part	
Implement Link	
Part Usage Link	
End Item Part	
Configurable End Item Part	
Configurable Module	
Option	
Choice	
Variant Specification	

## Scenario:

- Assume no data has been previously exported/imported
- The user selects the Truck System Block initiates the Modeler Exporter
- The system will automatically determine items that should be created as Configurable Modules
  - If an item has an artefact dependency link to a variant as shown, the parent of this item will be created as a Configurable Module Part
- The user can also manually select the checkbox for any selected item to specify that it should be created as a Configurable Module Part
- The user chooses to not create variability items in Windchill (by de-selecting the items)
- Export files are created and the user then imports into Windchill
- The system will optionally create "Implement" trace links from the Parts to the corresponding Blocks

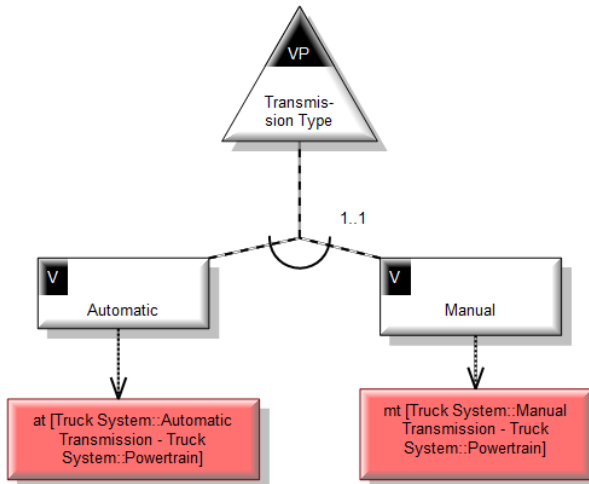
# PUC 16 – CREATE WINDCHILL CONFIGURABLE PART STRUCTURE, OPTIONS, CHOICES AND ASSIGNED EXPRESSIONS BASED ON MODELER BLOCK STRUCTURE, VARIATION POINTS, VARIANTS AND ARTEFACT DEPENDENCIES LINKED TO BLOCK PROPERTIES

## Modeler Item Types

Block	
Block Property	
Implement Link	
Composite Aggregation	
Variation Point	
Variant	
Artifact Dependency	
Generalization	
Decision Set	

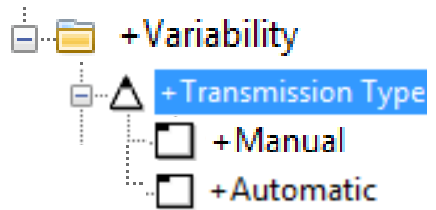
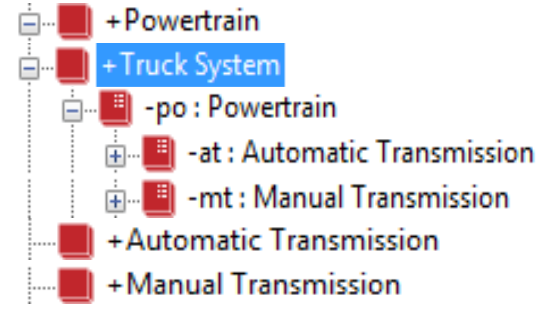
### Scenario:

- An extension of Use Case 15
- User selects Truck System Block and chooses to include related variability items for export
- Part structure with Configurable Module part will be created
- Options and Choices are created based on Variation Point and Variants
- Assigned Expressions created based on Modeler Artefact Dependency
  - Expression associates Choice and Part Usage link in this use case
- The system will optionally create "Implement" trace links from the Parts to



Variant Diagram

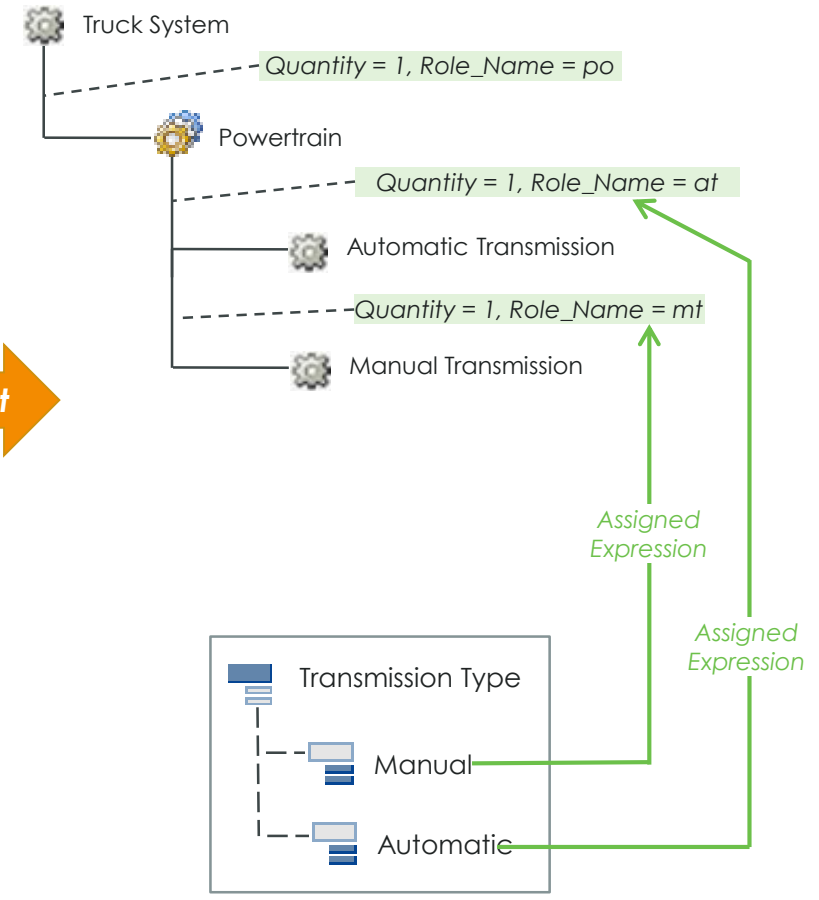
## Modeler Block Structure (Part Browser View)



Modeler Variability Items



## Windchill Part Structure



Windchill Options and Choices

## Windchill Item Types

Part	
Implement Link	
Part Usage Link	
End Item Part	
Configurable End Item Part	
Configurable Module	
Option	
Choice	
Variant Specification	

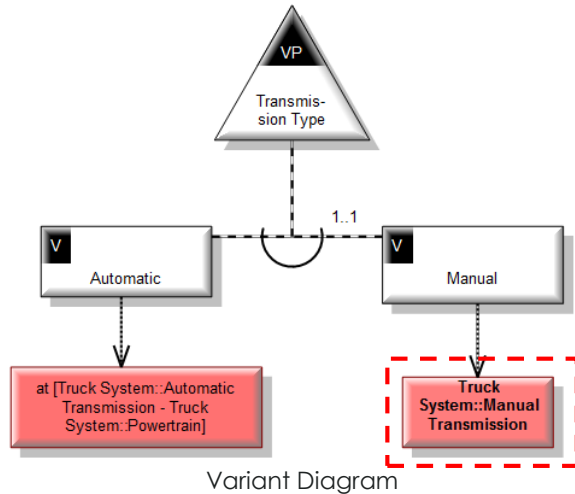
# PUC 17 – CREATE WINDCHILL CONFIGURABLE PART STRUCTURE, OPTIONS, CHOICES AND ASSIGNED EXPRESSIONS BASED ON MODELER BLOCK STRUCTURE, VARIATION POINTS, VARIANTS AND ARTEFACT DEPENDENCIES LINKED TO BLOCKS

## Modeler Item Types

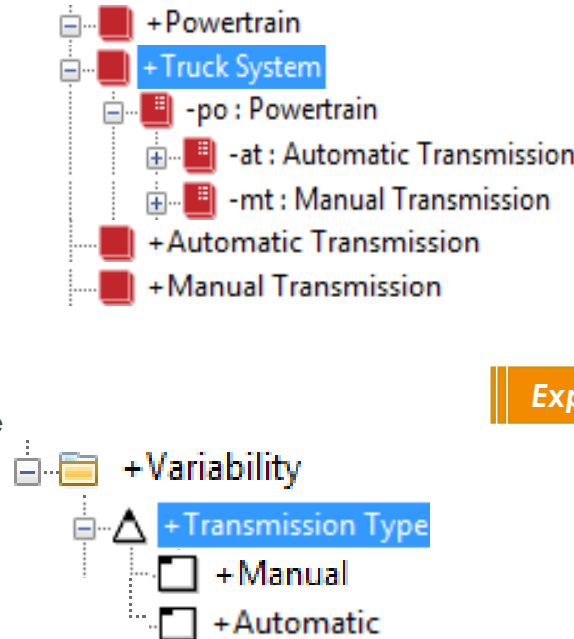
Block	
Block Property	
Implement Link	
Composite Aggregation	
Variation Point	
Variant	
Artifact Dependency	
Generalization	
Decision Set	

## Scenario

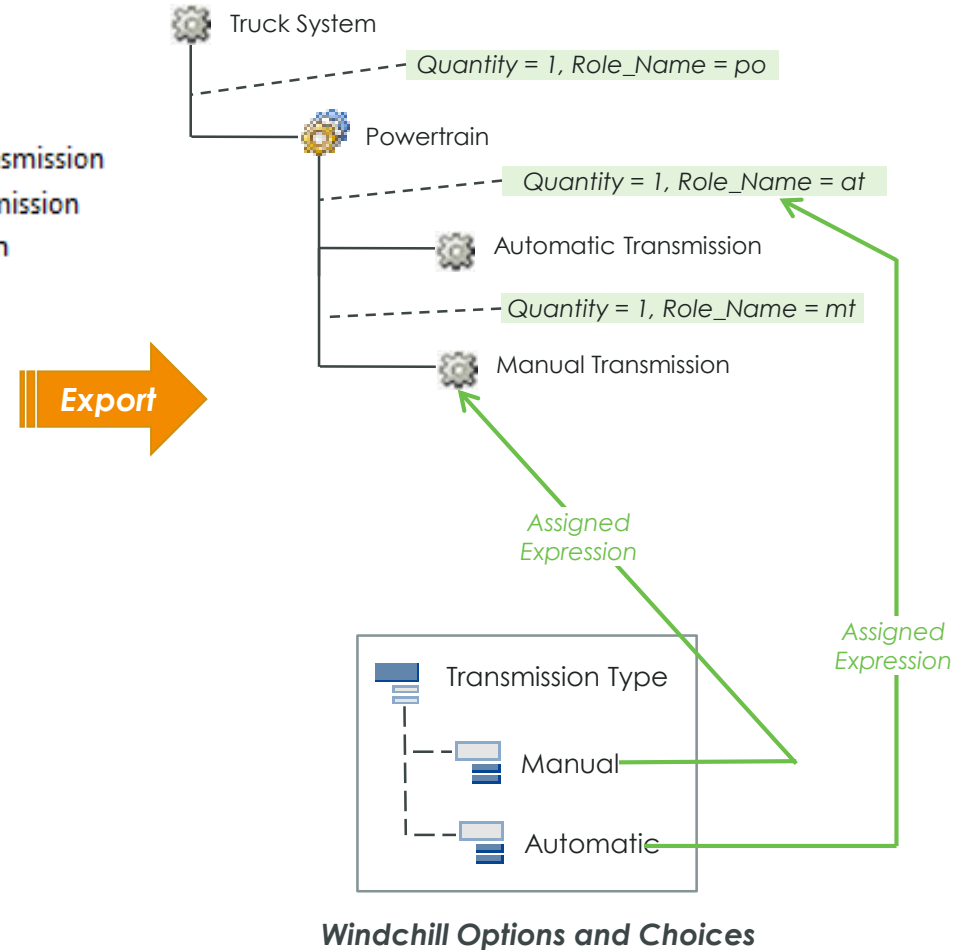
- Extension of use case 16, except that the Modeler Artifact Dependency links to a Block, not a Block Property
- In this case, the Assigned Expression in Windchill will be created between the Choice and Part
  - If Modeler Artifact Dependency links to a Block Property, the WC Expression is assigned to the corresponding Part Usage link
  - If the Artifact Dependency links to a Block, the Expression is assigned to the corresponding Part
- The system will optionally create "Implement" trace links from the Parts to the corresponding Blocks



## Modeler Block Structure (Part Browser View)



## Windchill Part Structure



## Windchill Item Types

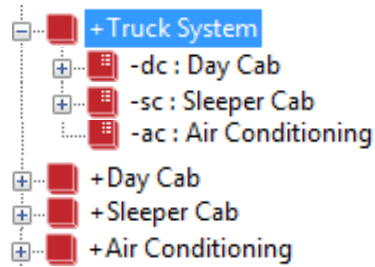
Part	
Implement Link	
Part Usage Link	
End Item Part	
Configurable End Item Part	
Configurable Module	
Option	
Choice	
Variant Specification	

# PUC 18 – CREATE WINDCHILL CONFIGURABLE PART STRUCTURE, OPTIONS, CHOICES AND ASSIGNED EXPRESSIONS BASED ON MODELER BLOCK STRUCTURE, VARIATION POINTS, VARIANTS AND MULTIPLE ARTEFACT DEPENDENCIES

## Modeler Item Types

Block	
Block Property	
Implement Link	
Composite Aggregation	
Variation Point	
Variant	
Artifact Dependency	
Generalization	
Decision Set	

## Modeler Blocks (Part Browser View)

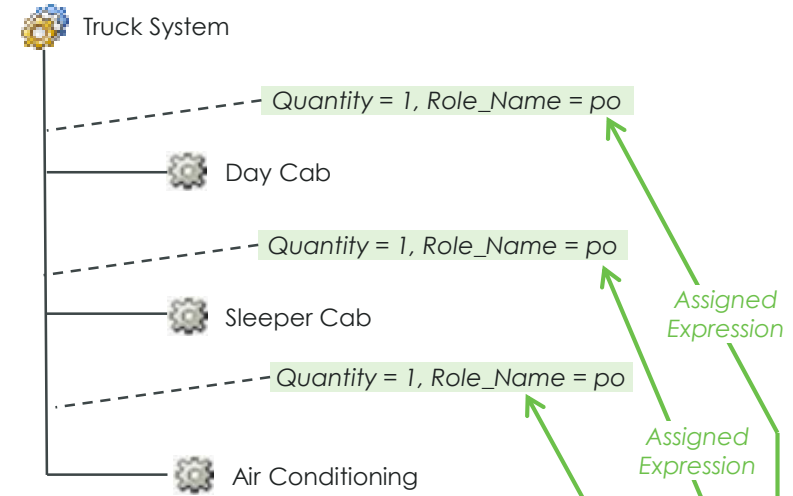


### Scenario:

- Variant (Sleeper) has 2 Artifact Dependencies
- Windchill Choice (Sleeper) will be created with 2 Assigned Expressions



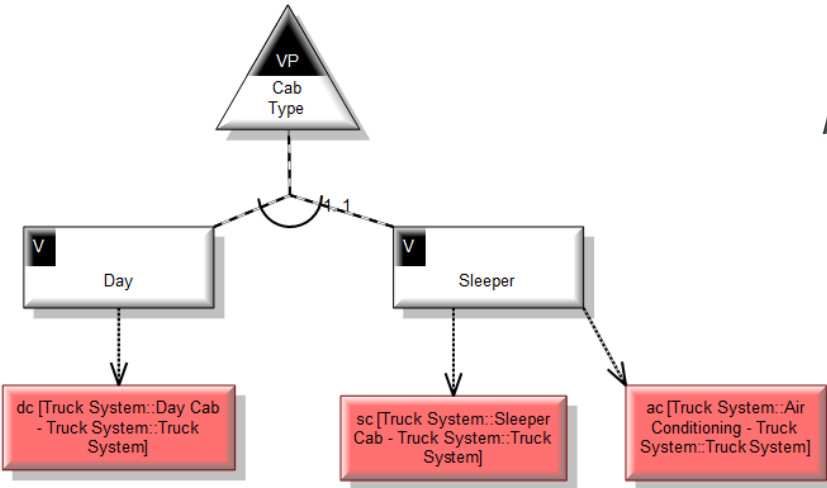
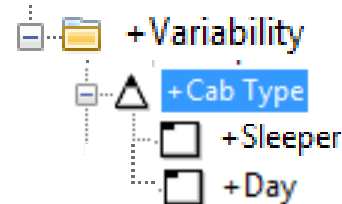
## Windchill Part Structure



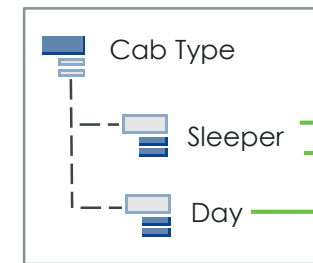
## Windchill Item Types

Part	
Implement Link	
Part Usage Link	
End Item Part	
Configurable End Item Part	
Configurable Module	
Option	
Choice	
Variant Specification	

## Modeler Variability Items



Variant Diagram



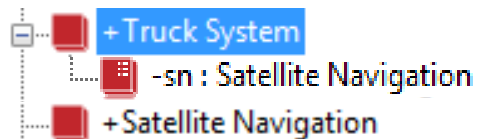
Windchill Options and Choices

# PUC 19 – CREATE WINDCHILL CONFIGURABLE PART STRUCTURE, OPTIONS, CHOICES AND ASSIGNED EXPRESSIONS BASED ON MODELER BLOCK STRUCTURE, VARIATION POINTS, VARIANTS AND ARTEFACT DEPENDENCIES (SINGLE CHOICE)

## Modeler Item Types

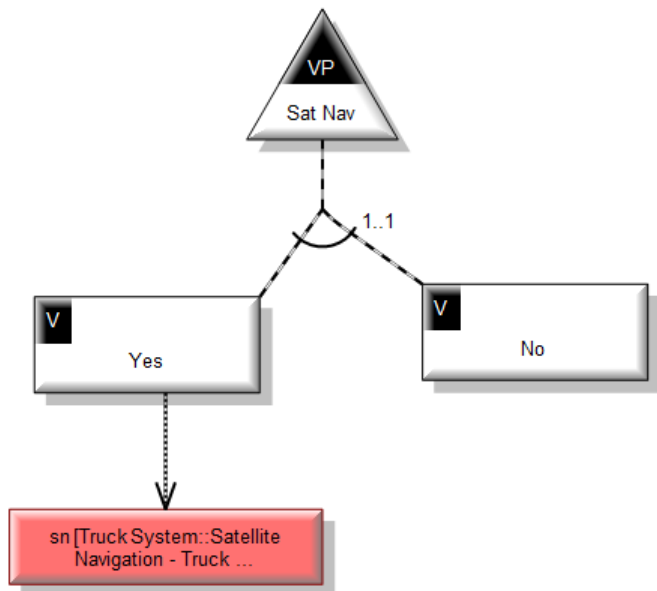
Block	
Block Property	
Implement Link	
Composite Aggregation	
Variation Point	
Variant	
Artifact Dependency	
Generalization	
Decision Set	

## Modeler Blocks (Part Browser View)

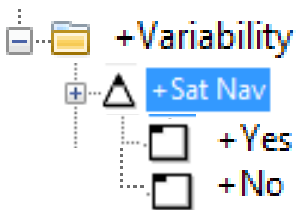


### Scenario:

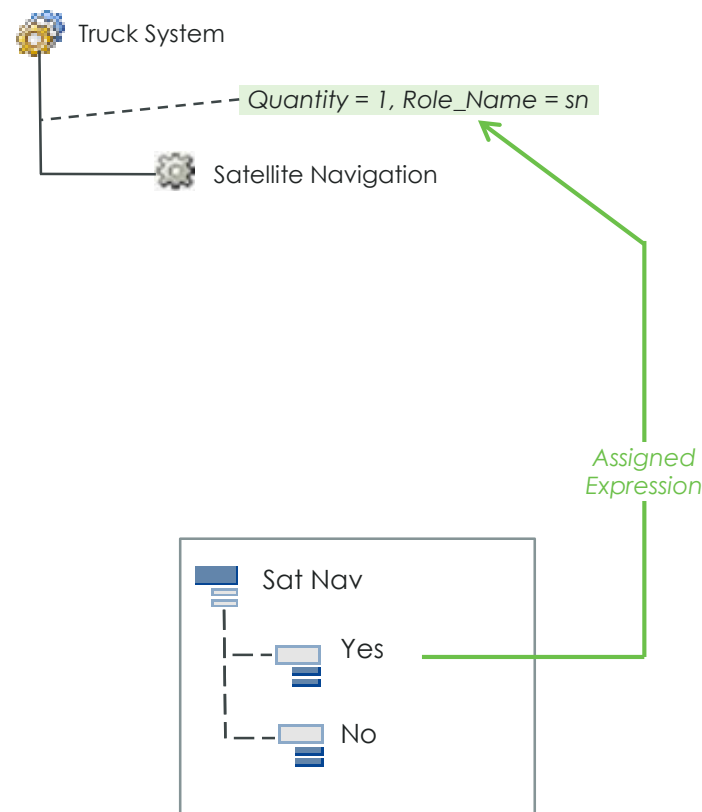
- Variation Point with 2 Variants but only one has an Artefact Dependency, therefore only one Assigned Expression will be created



Variant Diagram



## Windchill Part Structure



## Windchill Item Types

Part	
Implement Link	
Part Usage Link	
End Item Part	
Configurable End Item Part	
Configurable Module	
Option	
Choice	
Variant Specification	

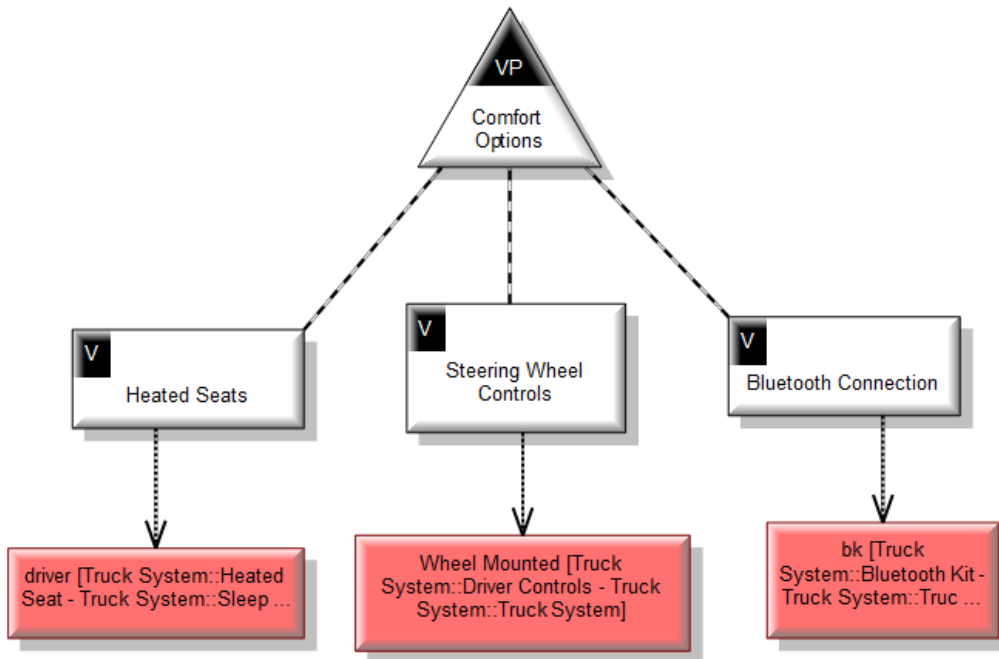
# PUC 20 – CREATE WINDCHILL OPTION BASED ON MODELER VARIATION POINT WITH MULTIPLE SELECTION

## Modeler Item Types

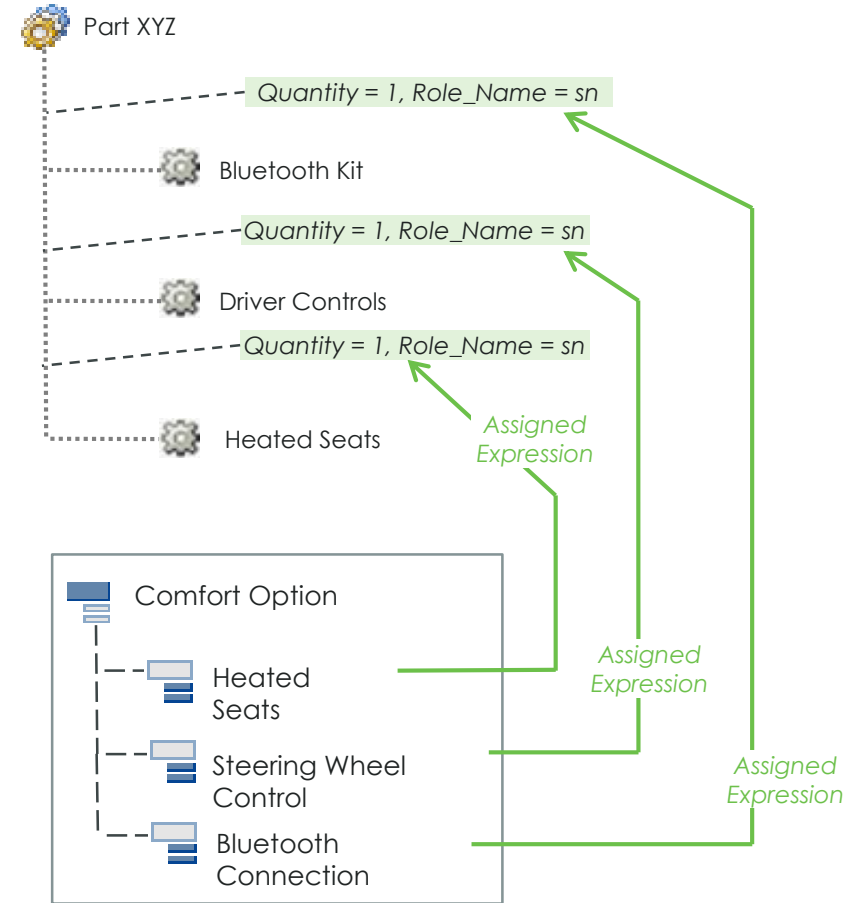
Block	
Block Property	
Implement Link	
Composite Aggregation	
Variation Point	
Variant	
Artifact Dependency	
Generalization	
Decision Set	

## Scenario:

- Model with mandatory Variation Point and 3 Optional Variability dependencies
- The system will create the Windchill Option
  - With Required set to Yes
  - With Single Selection set to No



Variant Diagram



## Windchill Item Types

Part	
Implement Link	
Part Usage Link	
End Item Part	
Configurable End Item Part	
Configurable Module	
Option	
Choice	
Variant Specification	



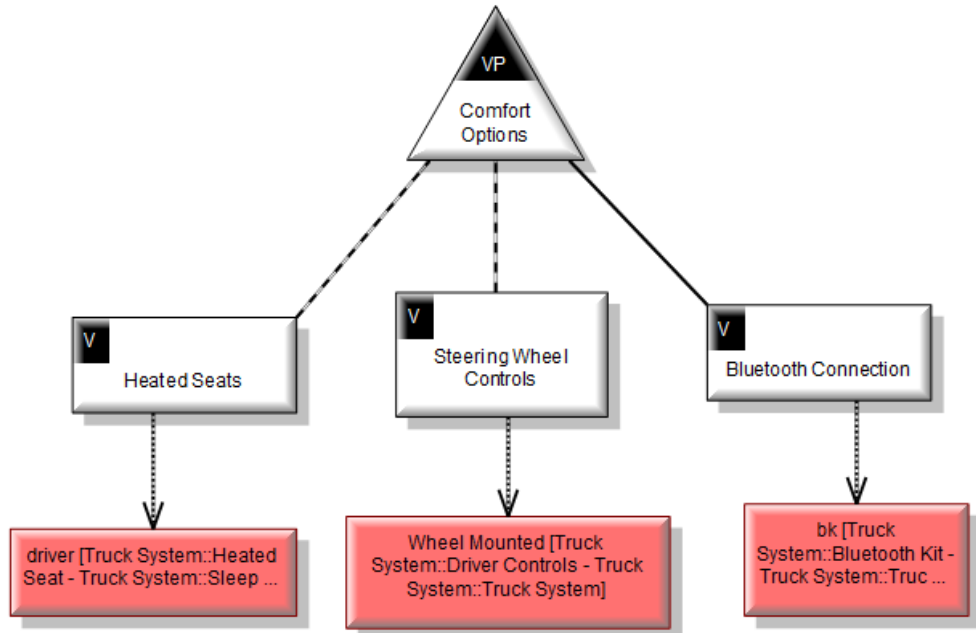
# PUC 21 – CREATE WINDCHILL OPTIONS AND CHOICES BASED ON MODELER VARIATION POINTS WITH MANDATORY DEPENDENCY

## Modeler Item Types

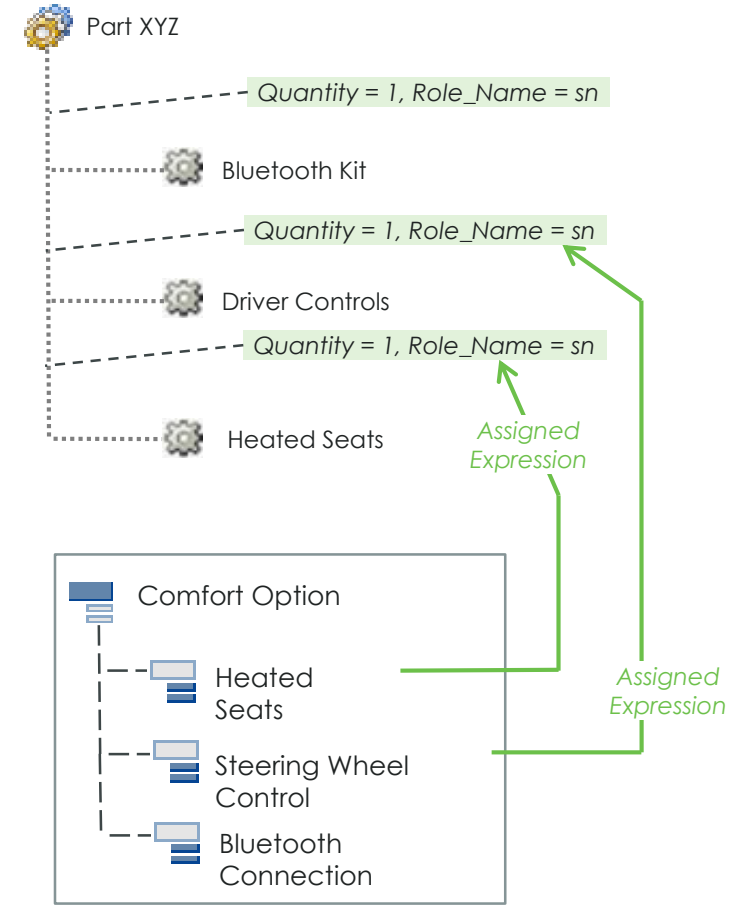
Block	
Block Property	
Implement Link	
Composite Aggregation	
Variation Point	
Variant	
Artifact Dependency	
Generalization	
Decision Set	

## Scenario:

- Extension of previous use case but with Mandatory Dependency between Variation Point and Variant
  - The system will create the Windchill Option with Required set to Yes and Single Selection set to No
  - The system will create the Choice, but no Assigned Expressions.
    - Bluetooth Kit will be a non-variable Part and implicitly included regardless of choices selected



Variant Diagram



## Windchill Item Types

Part	
Implement Link	
Part Usage Link	
End Item Part	
Configurable End Item Part	
Configurable Module	
Option	
Choice	
Variant Specification	

# PUC 22 – CREATE WINDCHILL INCLUDE RULE BASED ON MODELER REQUIRES DEPENDENCY BETWEEN VARIANTS

## Modeler Item Types

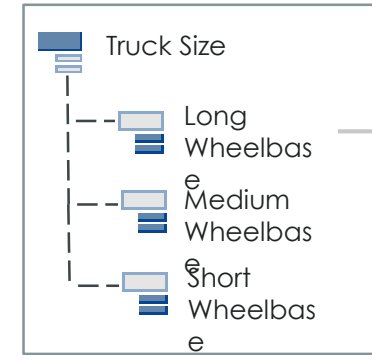
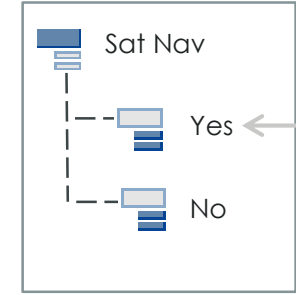
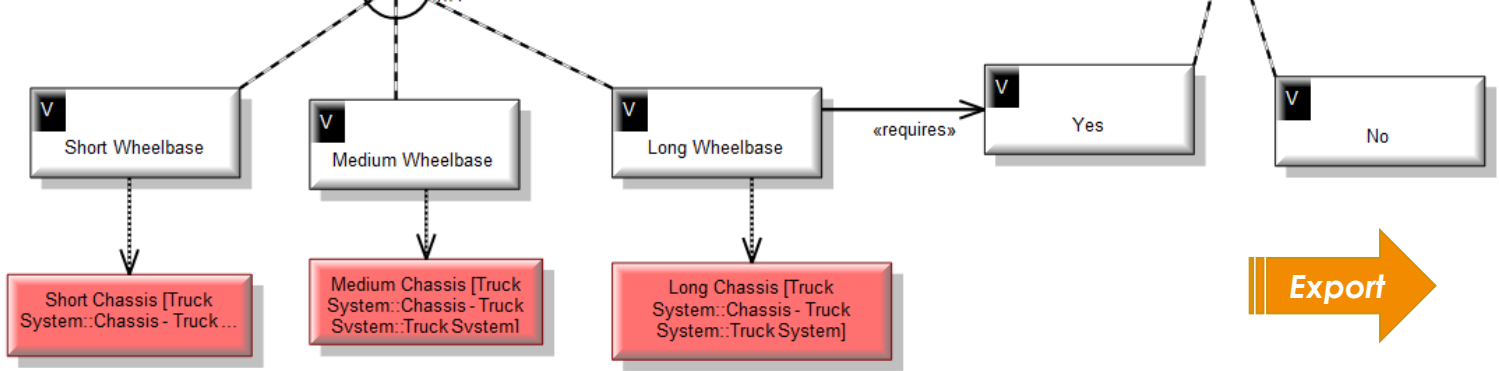
Block	
Block Property	
Implement Link	
Composite Aggregation	
Variation Point	
Variant	
Artifact Dependency	
Generalization	
Decision Set	

## Windchill Item Types

Part	
Implement Link	
Part Usage Link	
End Item Part	
Configurable End Item Part	
Configurable Module	
Option	
Choice	
Variant Specification	

For Modeler 8.3, export of the following items to Windchill will not be supported:

Requires Dependency  
Excludes Dependency



### Scenario:

- For each Requires dependency between Variants the system will create a Windchill Include Rule
  - Windchill Include Rule created using *ChoiceMapping* XML doctype
  - Source Choice option is specified
- Each Include Rule is then mapped to the target Choice(s) that are linked by the rule
  - Mapping defined using *ChoiceMappableChoiceLink* doctype
  - ChoiceMapping and target Choice specified
- Requires dependencies and Include Rules are both unidirectional in this scenario
  - Select Long Wheelbase Choice and Yes Choice automatically selected and can't be de-selected
  - Select Yes Choice, and Long Wheelbase Choice is not automatically selected

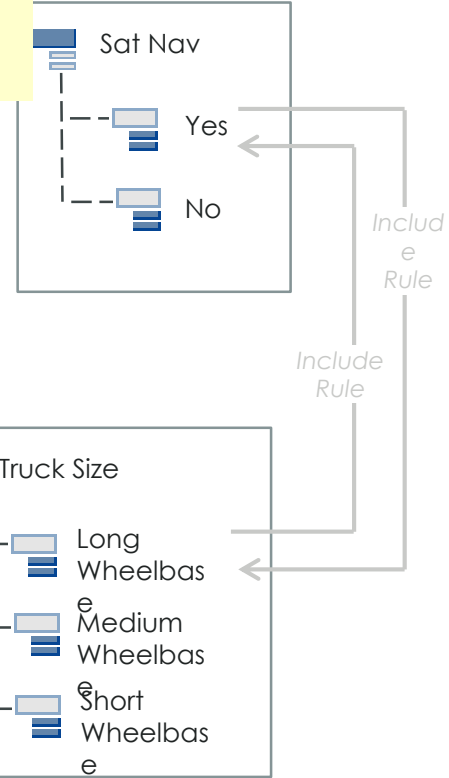
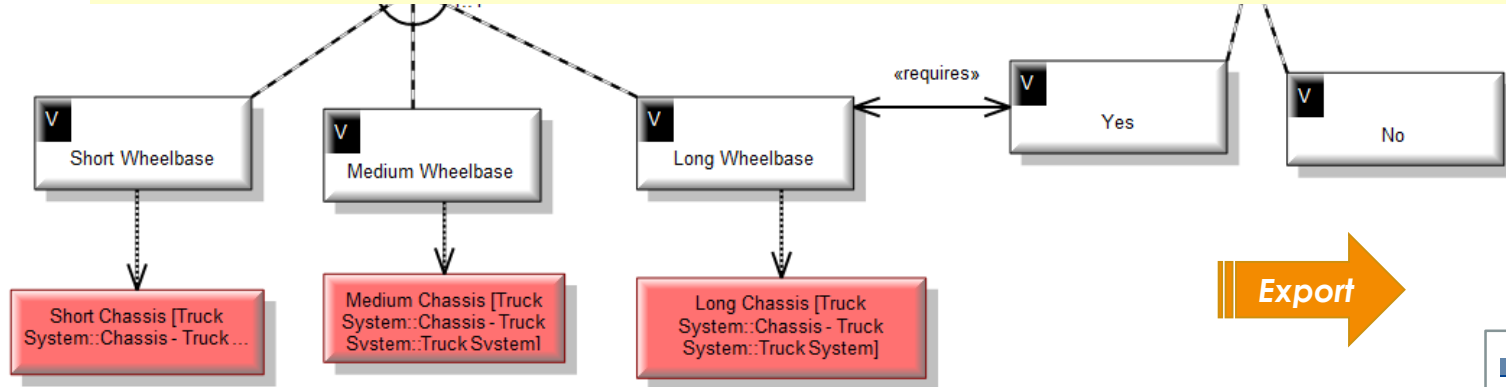
# PUC 23 – CREATE WINDCHILL INCLUDE RULE BASED ON MODELER REQUIRES DEPENDENCY BETWEEN VARIANTS

Modeler Item Types

- Block
- Block Property
- Implement Link
- Composite Aggregation
- Variation Point
- Variant
- Artifact Dependency
- Generalization
- Decision Set

For Modeler 8.3, export of the following items to Windchill will not be supported:

Requires Dependency  
Excludes Dependency



Windchill Item Types

- Part
- Implement Link
- Part Usage Link
- End Item Part
- Configurable End Item Part
- Configurable Module
- Option
- Choice
- Variant Specification

Scenario:

- Same as previous use case, but the Requires dependency is now bi-directional
- The system will create 2 Include Rules, one in each direction

# PUC 24 – CREATE WINDCHILL INCLUDE RULE BASED ON MODELER REQUIRES DEPENDENCY BETWEEN VARIANT AND VARIATION POINT

## Modeler Item Types

- Block
- Block Property
- Implement Link
- Composite Aggregation
- Variation Point
- Variant
- Artifact Dependency
- Generalization
- Decision Set

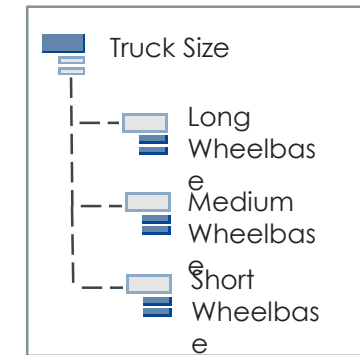
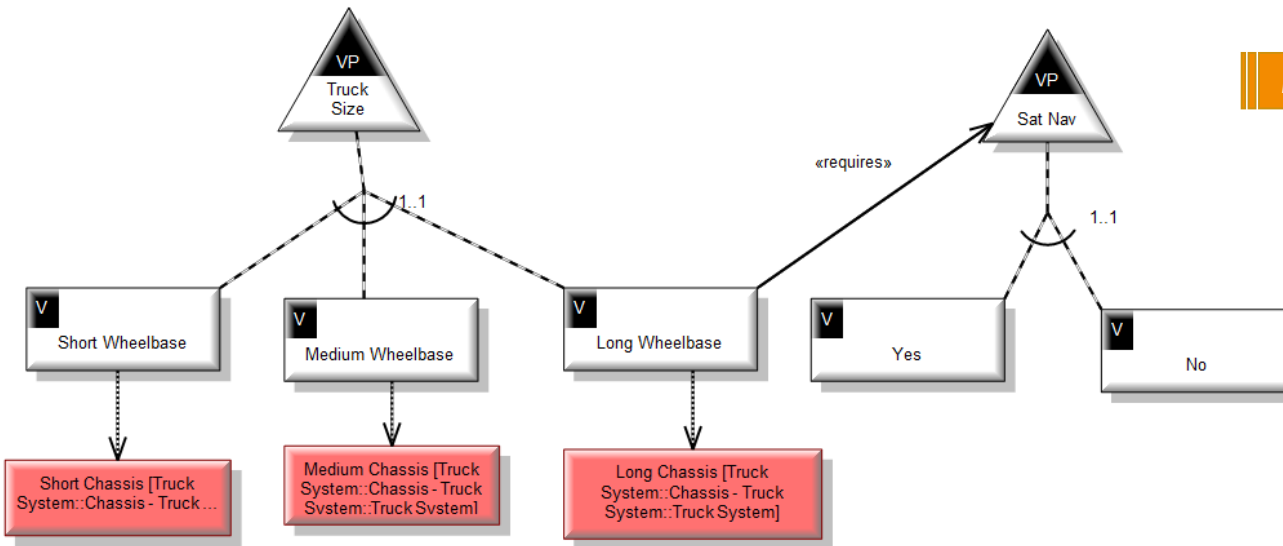
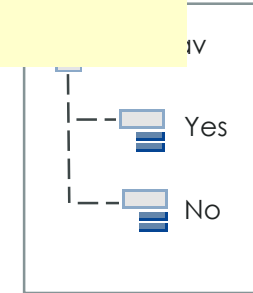
Scene

- M
- C
- S

For Modeler 8.3, export of the following items to Windchill will not be supported:

Requires Dependency  
Excludes Dependency

- Maybe be possible to achieve something similar with Conditional rules



## Windchill Item Types

- Part
- Implement Link
- Part Usage Link
- End Item Part
- Configurable End Item Part
- Configurable Module
- Option
- Choice
- Variant Specification

# PUC 25 – CREATE WINDCHILL INCLUDE RULE BASED ON MODELER REQUIRES DEPENDENCY BETWEEN VARIANT AND VARIATION POINT

## Modeler Item Types

- Block
- Block Property
- Implement Link
- Composite Aggregation
- Variation Point
- Variant
- Artifact Dependency
- Generalization
- Decision Set

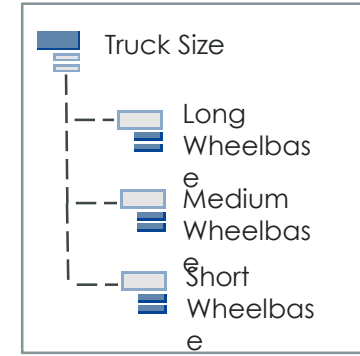
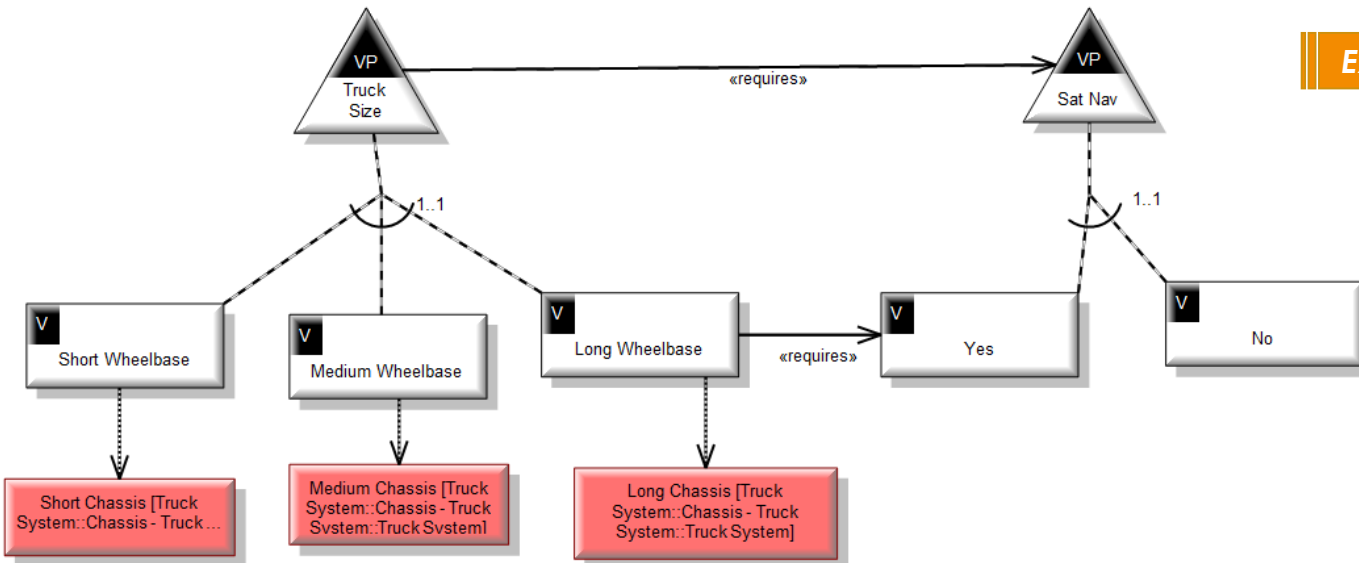
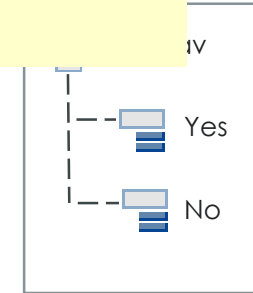
Scene

- M
- P
- S

For Modeler 8.3, export of the following items to Windchill will not be supported:

Requires Dependency  
Excludes Dependency

- Maybe be possible to achieve something similar with Conditional rules



## Windchill Item Types

- Part
- Implement Link
- Part Usage Link
- End Item Part
- Configurable End Item Part
- Configurable Module
- Option
- Choice
- Variant Specification

# PUC 26 – CREATE WINDCHILL CHOICE BASED ON MODELER VARIANT NOT LINKED TO A VARIATION POINT

## Modeler Item Types

Block	
Block Property	
Implement Link	
Composite Aggregation	
Variation Point	
Variant	
Artifact Dependency	
Generalization	
Decision Set	

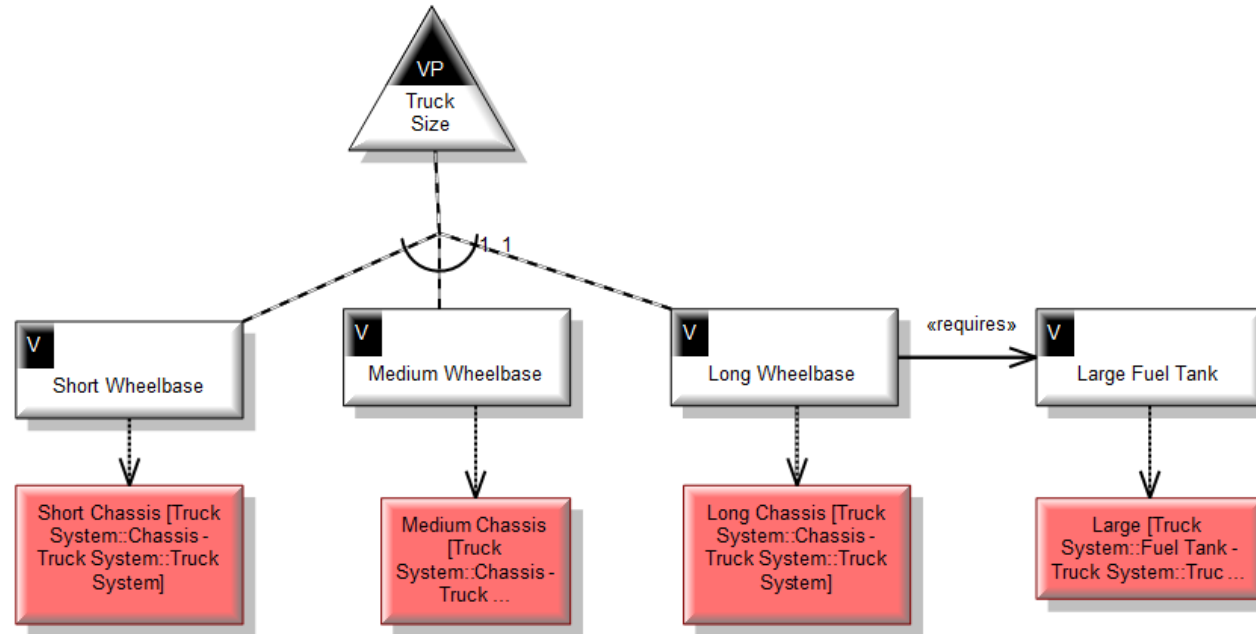
For Modeler 8.3, export of the following items to Windchill will not be supported:

- No
- Modeler items that **Requires Dependency** or **Excludes Dependency** are not exported to Windchill

- Before export, the system should check that Modeler variability models are valid

## Windchill Item Types

Part	
Implement Link	
Part Usage Link	
End Item Part	
Configurable End Item Part	
Configurable Module	
Option	
Choice	
Variant Specification	



# PUC 27 – CREATE WINDCHILL EXCLUDE RULE BASED ON MODELER EXCLUDES DEPENDENCY BETWEEN VARIANTS

## Modeler Item Types

- Block
- Block Property
- Implement Link
- Composite Aggregation
- Variation Point
- Variant
- Artifact Dependency
- Generalization
- Decision Set

Scenario

For

Each

Exclude

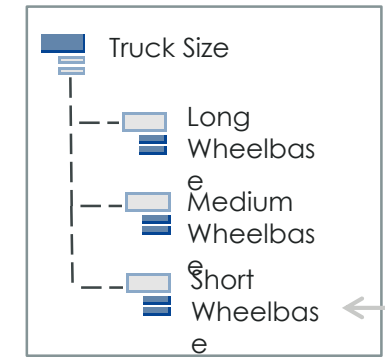
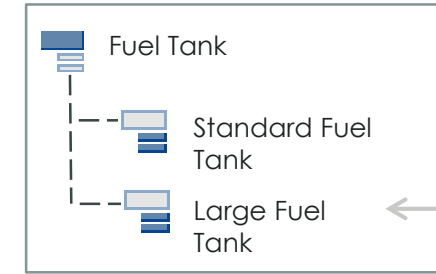
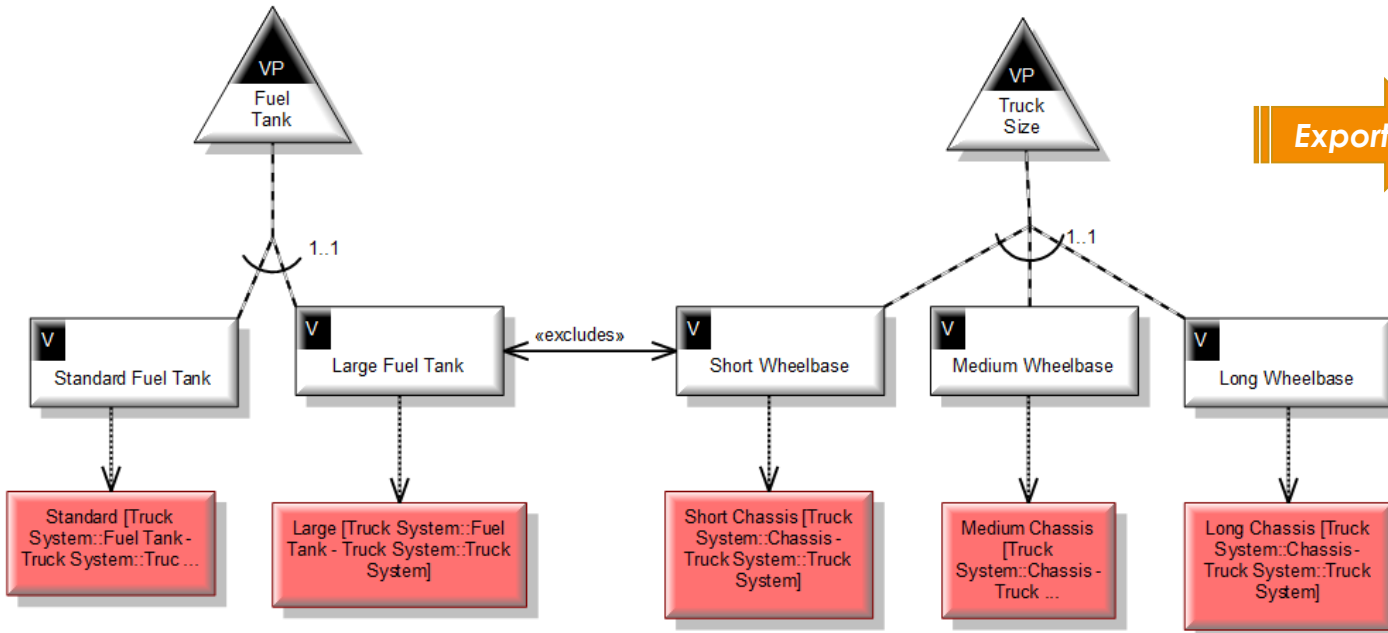
direction)

- Select Standard Fuel Tank Choice and Medium Wheelbase and Long Wheelbase Choices are automatically de-selected and can't be selected (and vice versa)

For Modeler 8.3, export of the following items to Windchill will not be supported:

Requires Dependency  
Excludes Dependency

Excludes Rule



Exclude Rule

## Windchill Item Types

- Part
- Implement Link
- Part Usage Link
- End Item Part
- Configurable End Item Part
- Configurable Module
- Option
- Choice
- Variant Specification

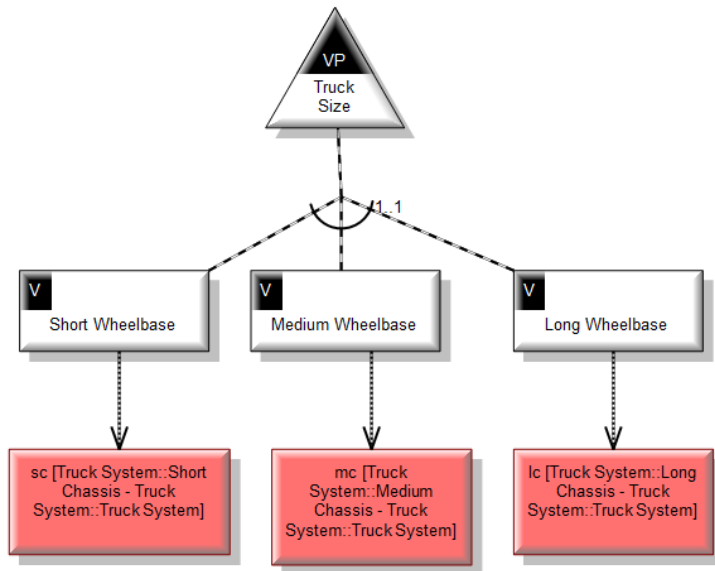
# PUC 28 – CREATE WINDCHILL OPTION SET FROM MODELER VARIABILITY ITEMS

## Modeler Item Types

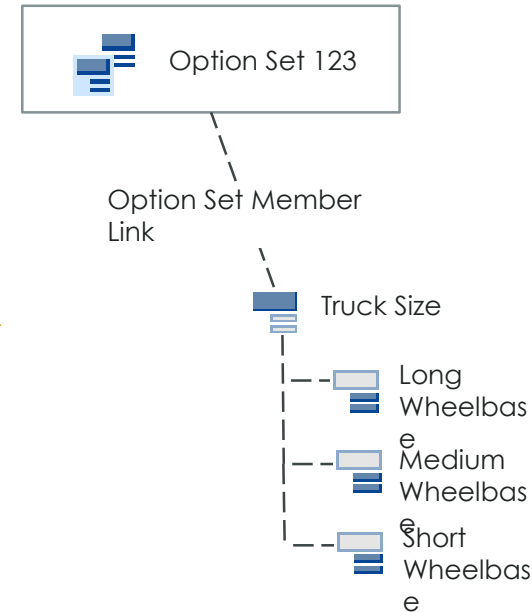
Block	
Block Property	
Implement Link	
Composite Aggregation	
Variation Point	
Variant	
Artifact Dependency	
Generalization	
Decision Set	

## Scenario:

- The user has chosen as least one Variation Point to export
- The system will create a new Option Set in Windchill whenever variability items are exported
- All of the exported Options/Choices are added to the new Option Set
  - Using OptionSetMemberLink
- Option Set name can be specified in the Export UI
- Option Set is not assigned to any Product context – this needs to be done through the Windchill UI



Variant Diagram



## Windchill Item Types

Part	
Implement Link	
Part Usage Link	
End Item Part	
Configurable End Item Part	
Configurable Module	
Option	
Choice	
Variant Specification	

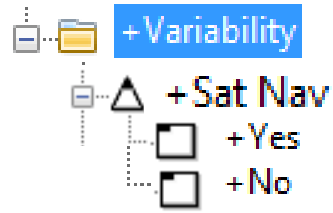


# PUC 29 – CREATE WINDCHILL VARIABILITY ITEMS BASED ON MODELER VARIABILITY ITEMS USING PACKAGES

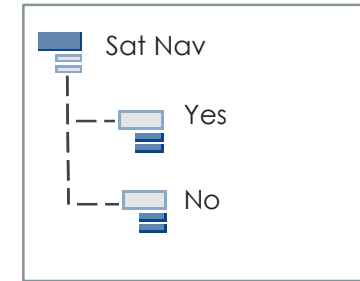
## Modeler Item Types

Block
Block Property
Implement Link
Composite Aggregation
Variation Point
Variant
Artifact Dependency
Generalization
Decision Set

## Modeler Variability Items



## Windchill Part Structure



### Scenario:

- User chooses a Package to export
- The system will export all eligible items inside the Package and sub-packages

## Windchill Item Types

Part
Implement Link
Part Usage Link
End Item Part
Configurable End Item Part
Configurable Module
Option
Choice
Variant Specification

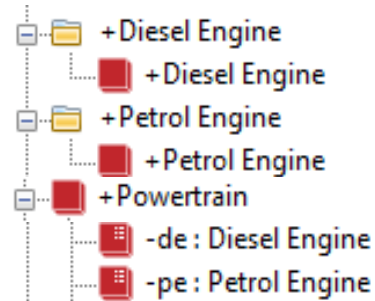
# PUC 30 – CREATE WINDCHILL VARIABILITY ITEMS BASED ON MODELER VARIABILITY ITEMS USING ARTIFACT DEPENDENCIES TO PACKAGES

## Modeler Item Types

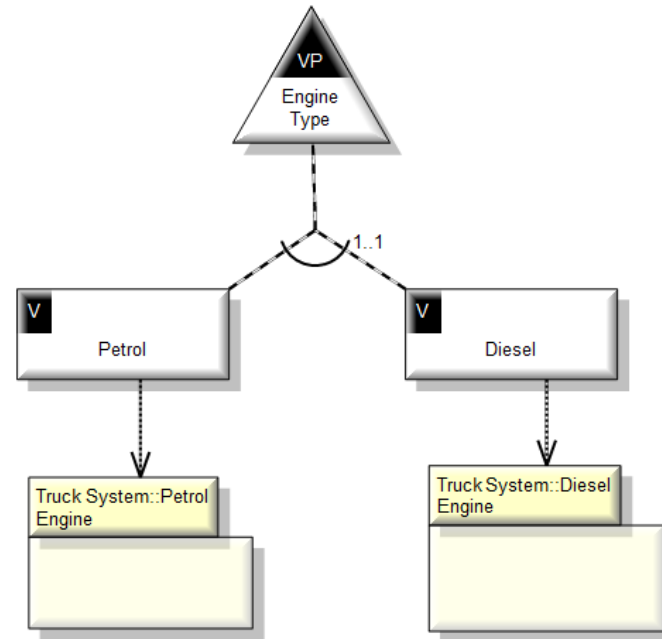
Block	
Block Property	
Implement Link	
Composite Aggregation	
Variation Point	
Variant	
Artifact Dependency	
Generalization	
Decision Set	

Scenario:

- When an Artefact Dependency links to a Package



Not supported in Modeler 8.3



## Windchill Item Types

Part	
Implement Link	
Part Usage Link	
End Item Part	
Configurable End Item Part	
Configurable Module	
Option	
Choice	
Variant Specification	

# PUC 31 – NOTIFY USER WHEN EXPORTING ITEMS WITH EXISTING TRACE LINKS

Modeler  
Item Types

Block 
Block Property 
Implement Link 
Composite Aggregation 
Variation Point 
Variant 
Artifact Dependency 
Generalization 
Decision Set 

We will not support this Use Case for Modeler 8.3

If the user attempts to exports a Modeler item that already has trace links pointing to it from Windchill objects, the system could:

- Inform the user as part of the export process that Block ABC has existing trace link(s). The linked items should be listed.
- Could provide an option to allow the user to set the existing trace link to Suspect
- Create the Windchill object and trace link as requested without warnings.
- **Running a lookup on Windchill to identify existing links will be costly in terms of performance**

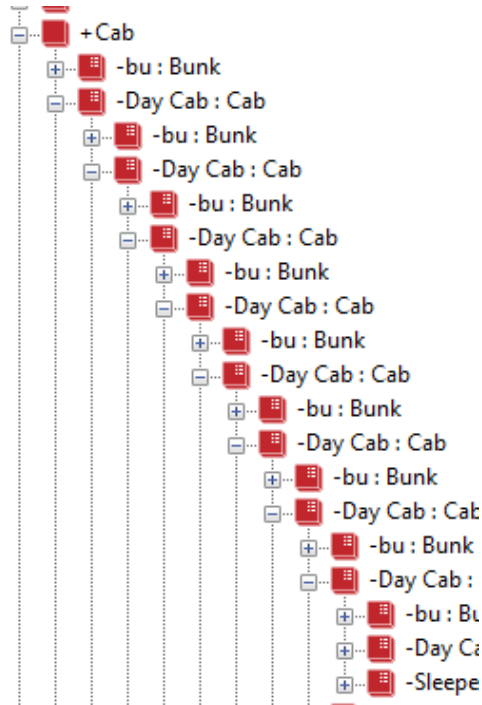
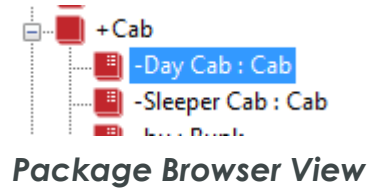
Windchill  
Item Types

Part 
Implement Link 
Part Usage Link 
End Item Part 
Configurable End Item Part 
Configurable Module 
Option 
Choice 
Variant Specification 

# PUC 32 – CREATE WINDCHILL PART STRUCTURE FROM RECURSIVE MODELER BLOCK STRUCTURE

## Modeler Item Types

Block	
Block Property	
Implement Link	
Composite Aggregation	
Variation Point	
Variant	
Artifact Dependency	
Generalization	
Decision Set	



Part Browser View

If a branch of a structure has items of the same Block type at different levels, this is a recursive structure

- Recursive part structures are not possible in Windchill

The Windchill Exporter creates just one level of the structure and does not repeat

## Windchill Item Types

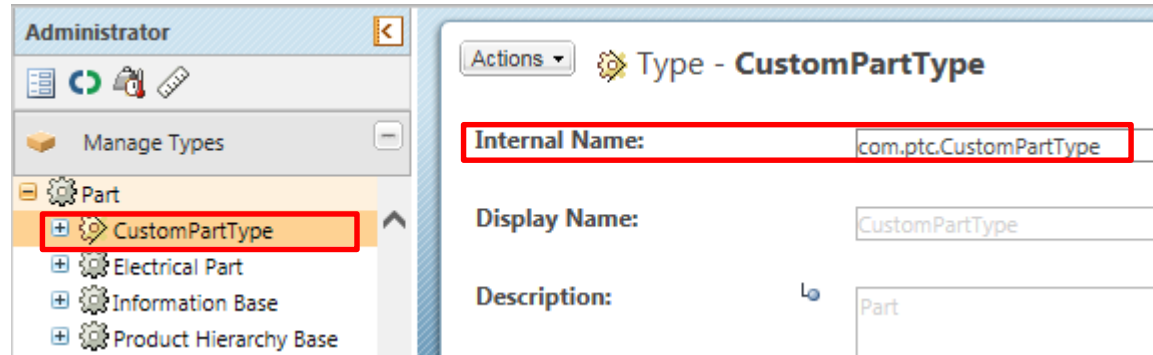
Part	
Implement Link	
Part Usage Link	
End Item Part	
Configurable End Item Part	
Configurable Module	
Option	
Choice	
Variant Specification	

# PUC 33 - CREATE WINDCHILL SOFT TYPE PARTS BASED ON MODELER BLOCK/BLOCK PROPERTY ITEMS

## Modeler Item Types

Block	
Block Property	
Implement Link	
Composite Aggregation	
Variation Point	
Variant	
Artifact Dependency	
Generalization	
Decision Set	

## Windchill Type Administration



```
<WCEExporterOptions Version="1.0">
  <General>
    <EXPFOlder ID="D:\temp"/>
    <DOCTYPE ID="standardX26.dtd"/>
    <TRACELINKS ID="1"/>
    <authoringLanguage ID=""/>
  </General>
  <WTPart>
    <lifecycleTemplateName ID="Basic"/>
    <lifecycleState ID="INWORK"/>
    <versionId ID="A"/>
    <versionPosition ID="1"/>
    <series ID="wt.series.HarvardSeries"/>
    <versionLevel ID="1"/>
    <iterationId ID="1"/>
    <iterationPosition ID="1"/>
    <iterationSeries ID="wt.series.IntegerSeries"/>
    <number ID="%nextNr%"/>
    <nextNr ID="166"/>
    <numberInc ID="1"/>
    <defaultTraceCode ID="0"/>
    <partType ID="separable"/>
    <partSource ID="make"/>
    <organizationName ID="SEM"/>
    <externalTypeId ID="WCTYPE|wt.part.WTPart|com.ptc.CustomPartType"/>
  </WTPart>
</WCEExporterOptions>
```

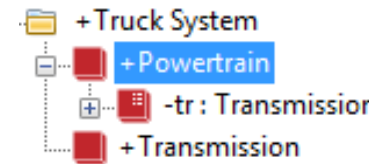
## Windchill Item Types

Part	
Implement Link	
Part Usage Link	
End Item Part	
Configurable End Item Part	
Configurable Module	
Option	
Choice	
Variant Specification	

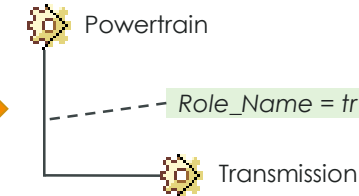
### Scenario:

- A pre-requisite for this use case is that the part type has been defined within the target Windchill system
- The user updates the Windchill Exporter configuration file to define the part type that should be created
- The user initiates the Windchill Exporter
- The Windchill Exporter generates XML files that create parts using a specific part soft type
- The system will optionally create "Implement" trace links from the Parts to the corresponding Blocks

### Modeler Block Structure (Part Browser View)



### Windchill Part Structure



# PUC 34 - CREATE WINDCHILL DATA USING NON-DEFAULT PARAMETER VALUES

## Modeler Item Types

Block
Block Property
Implement Link
Composite Aggregation
Variation Point
Variant
Artifact Dependency
Generalization
Decision Set

Scenario:

- Allow the Modeler user to modify the Windchill Configuration parameters
  - Lifecycle
  - State
  - Version
  - Windchill Version
- Parameter values can be set using the configuration file, or using the Windchill Exporter UI

```
C:\Enabler\EnablerATFiles\WCExporterConfig.xml - Notepad++
File Edit Search View Encoding Language Settings Macro Run Plugins Window ?
WCExporterConfig.xml
1 <WCExporterOptions Version="1.0">
2   <General>
3     <EXPFOLDER ID="D:\temp"/>
4     <DOCTYPE ID="standardX26.dtd"/>
5     <TRACELINKS ID="1"/>
6     <authoringLanguage ID=""/>
7   </General>
8   <WTPart>
9     <lifecycleTemplateName ID="Basic"/>
10    <lifecycleState ID="INWORK"/>
11    <versionId ID="A"/>
12    <versionPosition ID="1"/>
13    <series ID="wt.series.HarvardSeries"/>
14    <versionLevel ID="1"/>
15    <iterationId ID="1"/>
16    <iterationPosition ID="1"/>
17    <iterationSeries ID="wt.series.IntegerSeries"/>
18    <number ID="%nextNr"/>
19    <nextNr ID="166"/>
20    <numberInc ID="1"/>
21    <defaultTraceCode ID="0"/>
22    <partType ID="separable"/>
23    <partSource ID="make"/>
24    <organizationName ID="OEM"/>
25    <externalTypeId ID="WCTYPE|wt.part.WTPart"/>
26  </WTPart>
27  <Option>
28    <lifecycleTemplateName ID="Basic"/>
29    <lifecycleState ID="INWORK"/>
30    <versionId ID="A"/>
31    <versionPosition ID="1"/>
32    <series ID="wt.series.HarvardSeries"/>
33    <versionLevel ID="1"/>
34    <iterationId ID="1"/>
35    <iterationPosition ID="1"/>
```

## Windchill Item Types

Part
Implement Link
Part Usage Link
End Item Part
Configurable End Item Part
Configurable Module
Option
Choice
Variant Specification

# PUC 35 - CREATE WINDCHILL DATA USING CUSTOM PARAMETERS

## Modeler Item Types

Block
Block Property
Implement Link
Composite Aggregation
Variation Point
Variant
Artifact Dependency
Generalization
Decision Set

**This will not be supported in Modeler 8.3 but will be considered for future releases.**

The Windchill Export tool will generate XML that creates Windchill objects with only the minimum attributes specified.

In the future -

- The system could support the use of other standard attributes (E.g. View).
- The system could support the use of custom soft attributes (E.g. CustomerAttribute1).

## Windchill Item Types

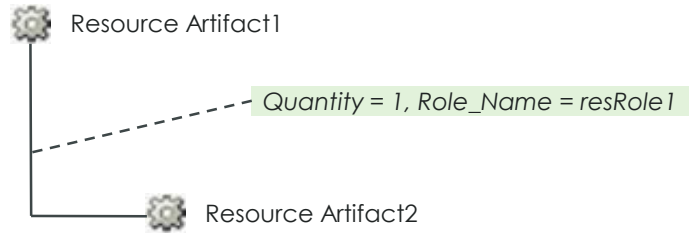
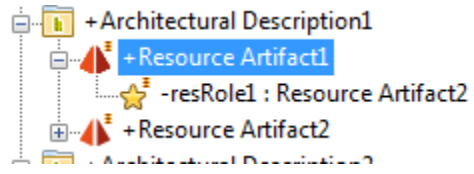
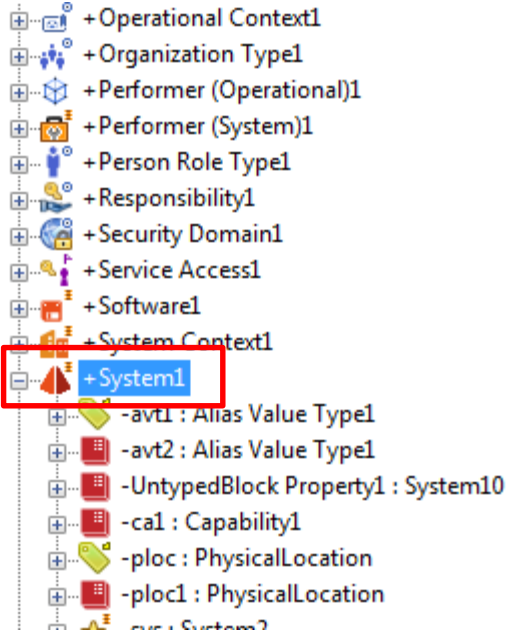
Part
Implement Link
Part Usage Link
End Item Part
Configurable End Item Part
Configurable Module
Option
Choice
Variant Specification

# PUC 36 - CREATE WINDCHILL PART STRUCTURE BASED ON MODELER BLOCK/BLOCK PROPERTY TYPE EXTENSIONS (E.G. UPDM)



## Modeler Item Types

Block	
Block Property	
Implement Link	
Composite Aggregation	
Variation Point	
Variant	
Artifact Dependency	
Generalization	
Decision Set	



## Scenario:

- The user selects a UPDM item and initiates the Windchill Exporter
  - Extensions of Block and Block Property types are eligible for export (E.g. ResourceArtifact, System, ResourceRole types)
- Export files are created and the user then imports into Windchill
- The system will optionally create "Implement" trace links from the Parts to the corresponding Modeler items

## Windchill Item Types

Part	
Implement Link	
Part Usage Link	
End Item Part	
Configurable End Item Part	
Configurable Module	
Option	
Choice	
Variant Specification	

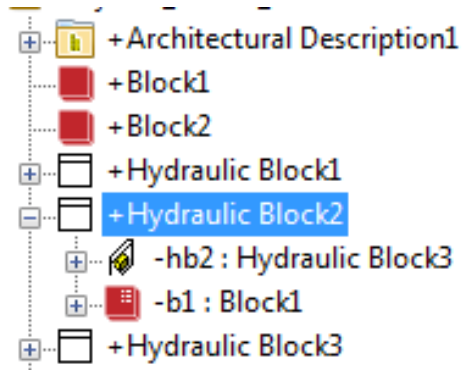


# PUC 37 - CREATE WINDCHILL PART STRUCTURE BASED ON MODELER LIGHTWEIGHT EXTENSIONS FOR BLOCK/BLOCK PROPERTY TYPES

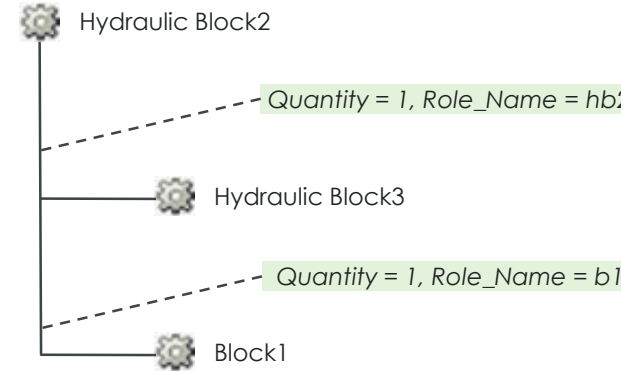
## Modeler Item Types

Block	
Block Property	
Implement Link	
Composite Aggregation	
Variation Point	
Variant	
Artifact Dependency	
Generalization	
Decision Set	

## Modeler Blocks (Part Browser View)



## Windchill Part Structure



## Windchill Item Types

Part	
Implement Link	
Part Usage Link	
End Item Part	
Configurable End Item Part	
Configurable Module	
Option	
Choice	
Variant Specification	

### Scenario:

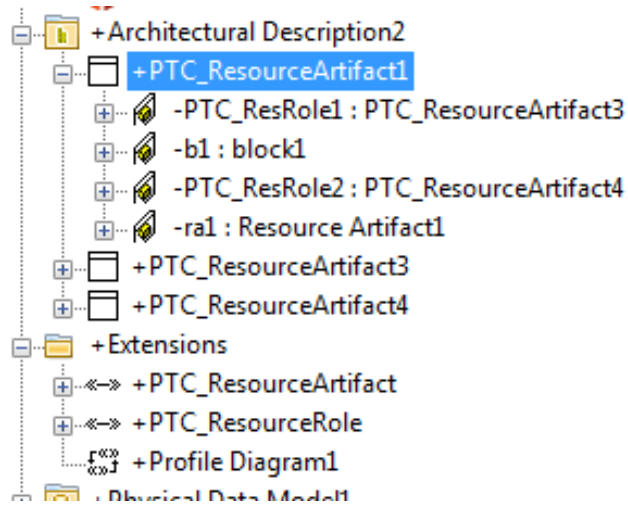
- The user selects an item that is typed by a lightweight extension of Block or Block Property types
- The user initiates the Windchill Exporter
- Export files are created and the user then imports into Windchill
- The system will optionally create "Implement" trace links from the Parts to the corresponding Modeler items

# PUC 41 - CREATE WINDCHILL PART STRUCTURE BASED ON MODELER LIGHTWEIGHT EXTENSIONS FOR UPDM TYPES

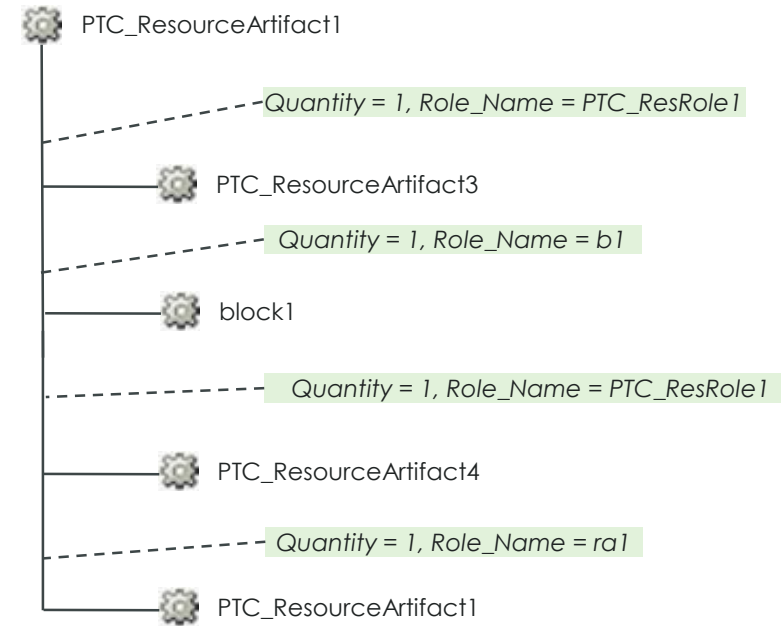
## Modeler Item Types

Block	
Block Property	
Implement Link	
Composite Aggregation	
Variation Point	
Variant	
Artifact Dependency	
Generalization	
Decision Set	

## Modeler Block Structure (Part Browser View)



## Windchill Part Structure



## Windchill Item Types

Part	
Implement Link	
Part Usage Link	
End Item Part	
Configurable End Item Part	
Configurable Module	
Option	
Choice	
Variant Specification	

### Scenario:

- The user selects a item that is typed by a lightweight extension of any eligible UPDM types
- Any type which is an extension of Block or Block Property is eligible ((e.g. ResourceArtifact)
- The user initiates the Windchill Exporter
- Export files are created and the user then imports into Windchill
- The system will optionally create “Implement” trace links from the Parts to the corresponding Modeler items



ptc